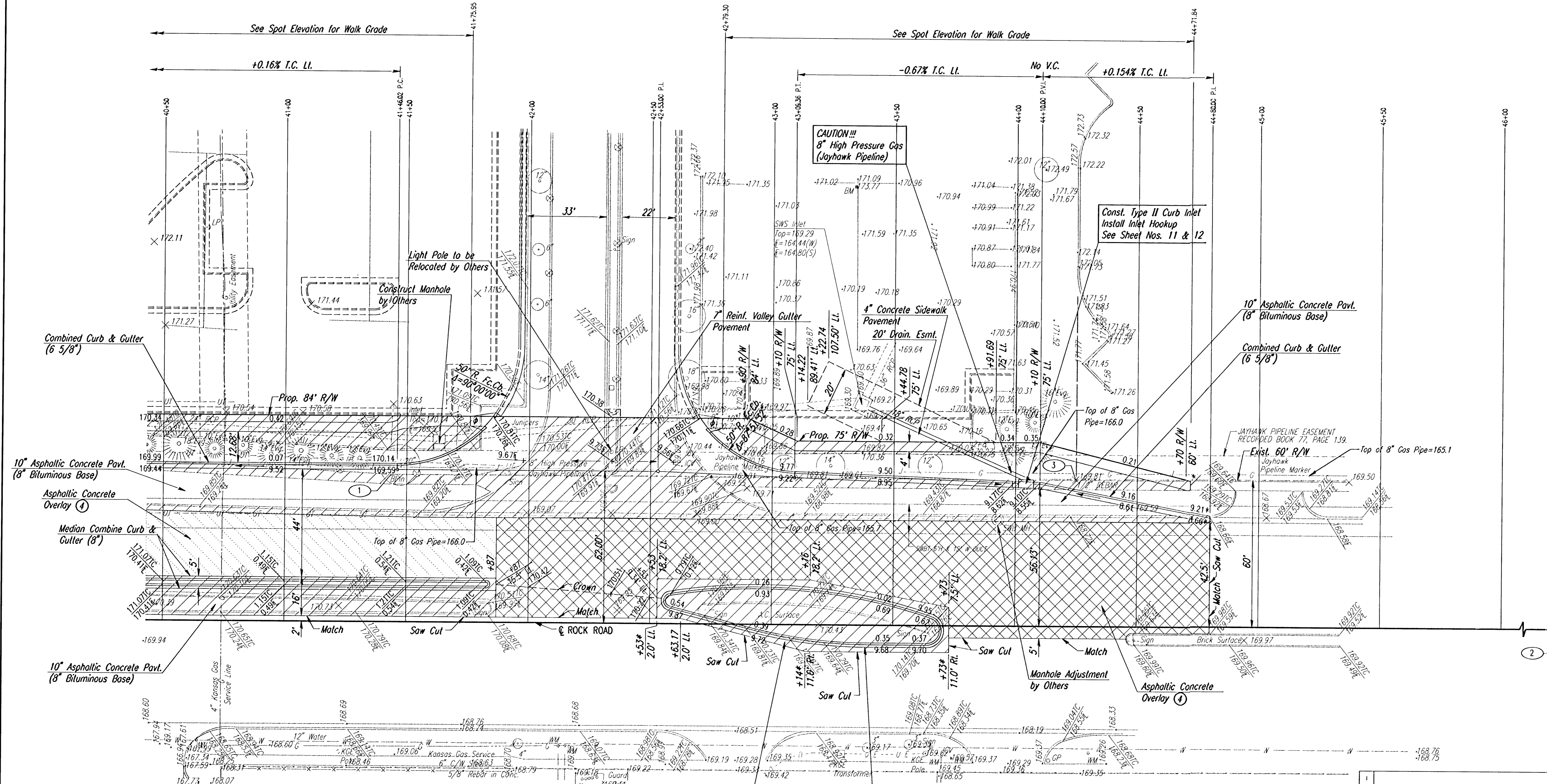


SCALE: 1"=20'



- ① The Bid Item "Pavement Removal" shall include the Removal of all Indicated Asphalt, Curb & Gutter, Islands, and Sidewalk.
- ④ The Bid Item "Asphaltic Concrete Overlay" shall be bid and paid for per Square Yards. The Thickness of the overlay Varies with an Average Thickness of 0'-6", which includes the 2" Asphaltic Concrete Wearing Surface. This Equals to a Volume of Asphalt equal to 1,560 Tons Computed at 145lbs./Cu. Ft.

Notes: All Sawed Joints are Subsidiary to the Bid Item "Pavement Removal".
 All Portions of the Irrigation System which are in Direct Conflict with the Proposed Construction shall be Removed and Realigned behind the Proposed Back of Curb.

- ① Pavement Removal
- ② Milling (2" Nom.) & Overlay
- ③ Overlay on Exist. Pavement
- ④ Constructed by Others
- * Match Existing
- ⊕ Construct Std. Wheelchair Ramp

PROJECT SURVEY CONTROL COORDINATE TABLE

POINT	DESCRIPTION	NORTH	EAST	STATION	OFFSET	ELEVATION
1	BPIN	20000.00	20000.00	41+43.68	60.01' Lt.	170.18
2	NE Cor. SE 1/4	20856.32	20060.02	50+00.00	00.00' Lt.	168.09
3	1/2" Rebar	20281.01	20000.26	44+24.69	59.76' Lt.	169.85

⑩ = Control Point

BW - Chis "a" South Side Conc. LP Base 340± East of Dillard's East Entrance. Elevation=173.76

DSNR: PMM OPER. BJS SCALE: 1"=20'
 I:/1999/99687/001/ROCK3.DGN 6-27-2000

City of Wichita, Kansas		By	Date
ROCK ROAD			
STA. 41+00 TO STA. 45+50			
Professional Engineering Consultants, P.A. 303 S. TOPEKA • WICHITA, KANSAS 67202 316-262-2691 • FAX 316-262-3003			
Designed by	BER, PMM	Checked by	
Drawn by	BJS	Date	MARCH 2000
		Job No.	99687-1