

# BENCHMARKS

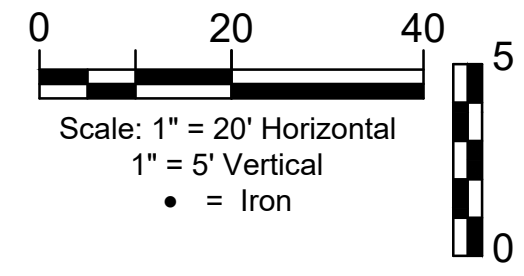
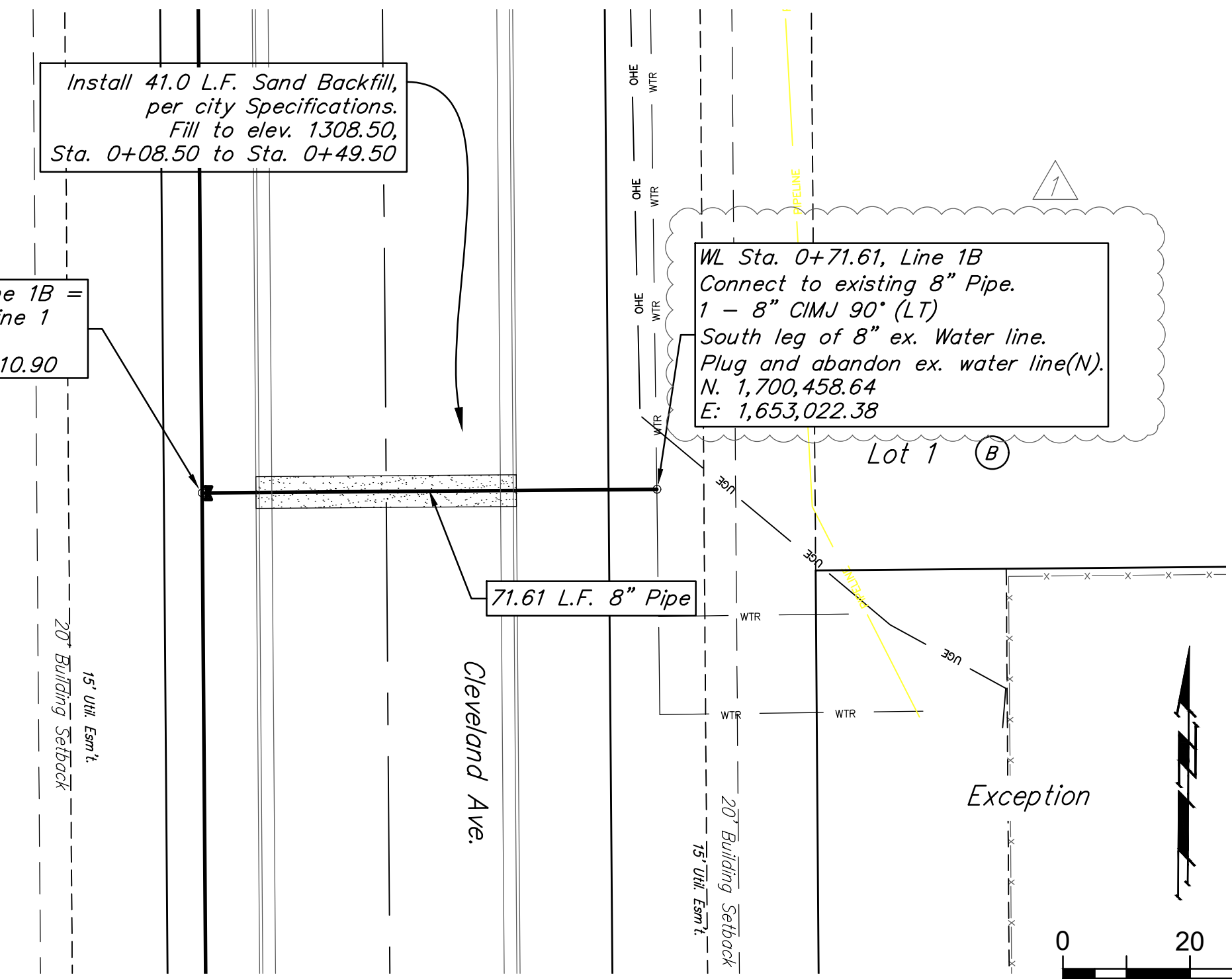
- BM- #1:  
Square cut on top of South curb of 21st St. N.  
334± West and 32± South of the intersection of  
21st St. N. and Cleveland Ave.  
Elev. = 1307.56(NAVD88)
- BM- #2:  
Square cut on top of South concrete pad of  
monitoring well 26± East and 51± South of the  
intersection of 21st St. N. and Cleveland Ave.  
Elev. = 1308.70(NAVD88)
- BM- #3:  
C.O.W BM Disc on top of South concrete wall  
918± West and 147± North of the intersection  
of 21st St. N. and Cleveland Ave.  
Elev. = 1312.58(NAVD88)

WL Sta. 0+00.00, Line 1B =  
WL Sta. 20+94.19, Line 1  
Begin Line 1B  
Valve Box Elev. = 1310.90

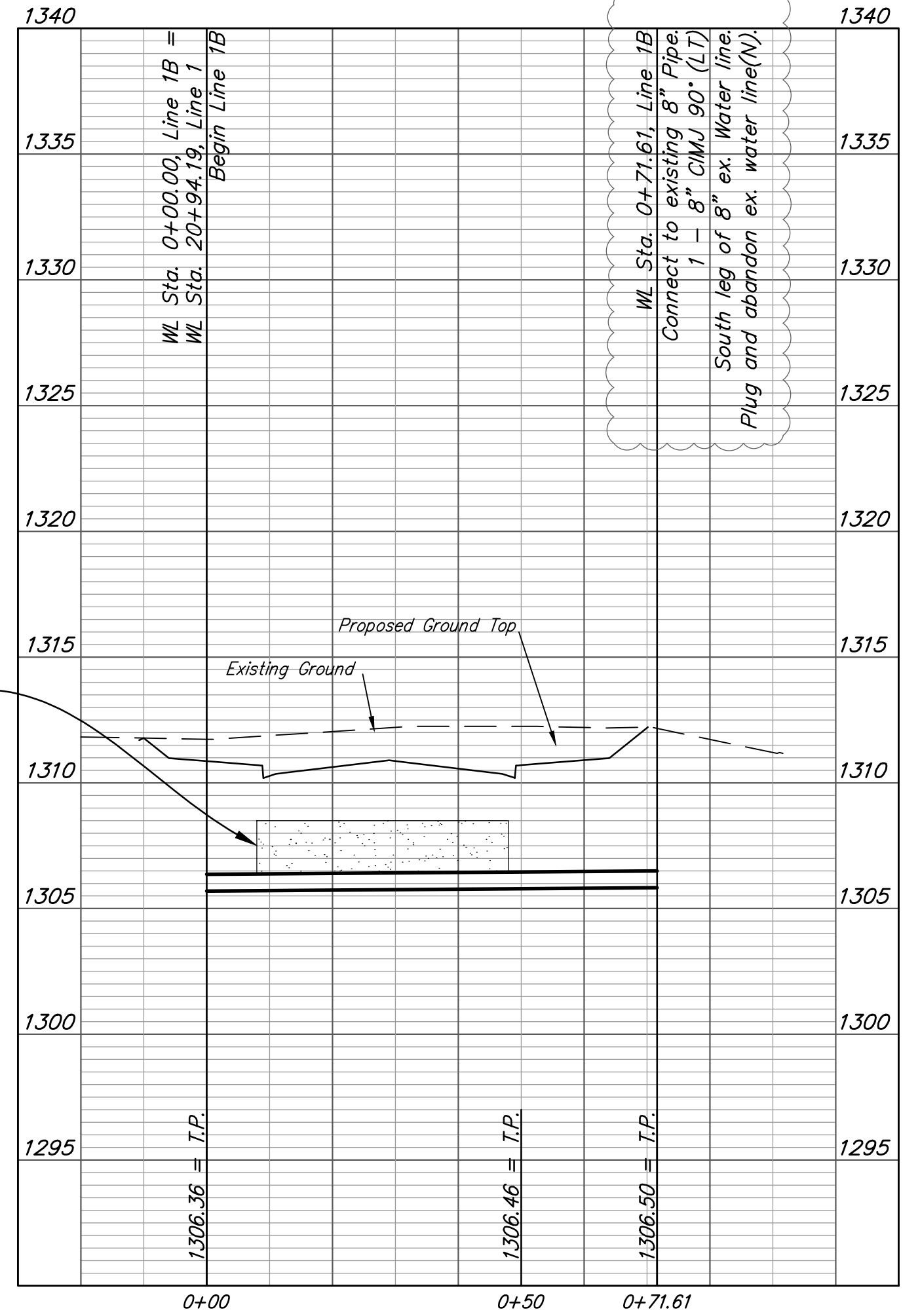
Install 41.0 L.F. Sand Backfill,  
per city Specifications.  
Fill to elev. 1308.50,  
Sta. 0+08.50 to Sta. 0+49.50

WL Sta. 0+71.61, Line 1B  
Connect to existing 8" Pipe.  
1 - 8" CIMJ 90° (LT)  
South leg of 8" ex. Water line.  
Plug and abandon ex. water line(N).  
N: 1,700,458.64  
E: 1,653,022.38

Lot 2 (A)  
Cornejo Industrial District



## LINE 1B

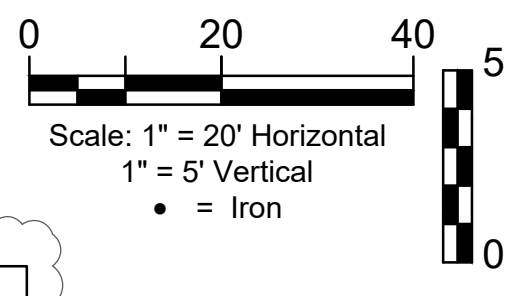
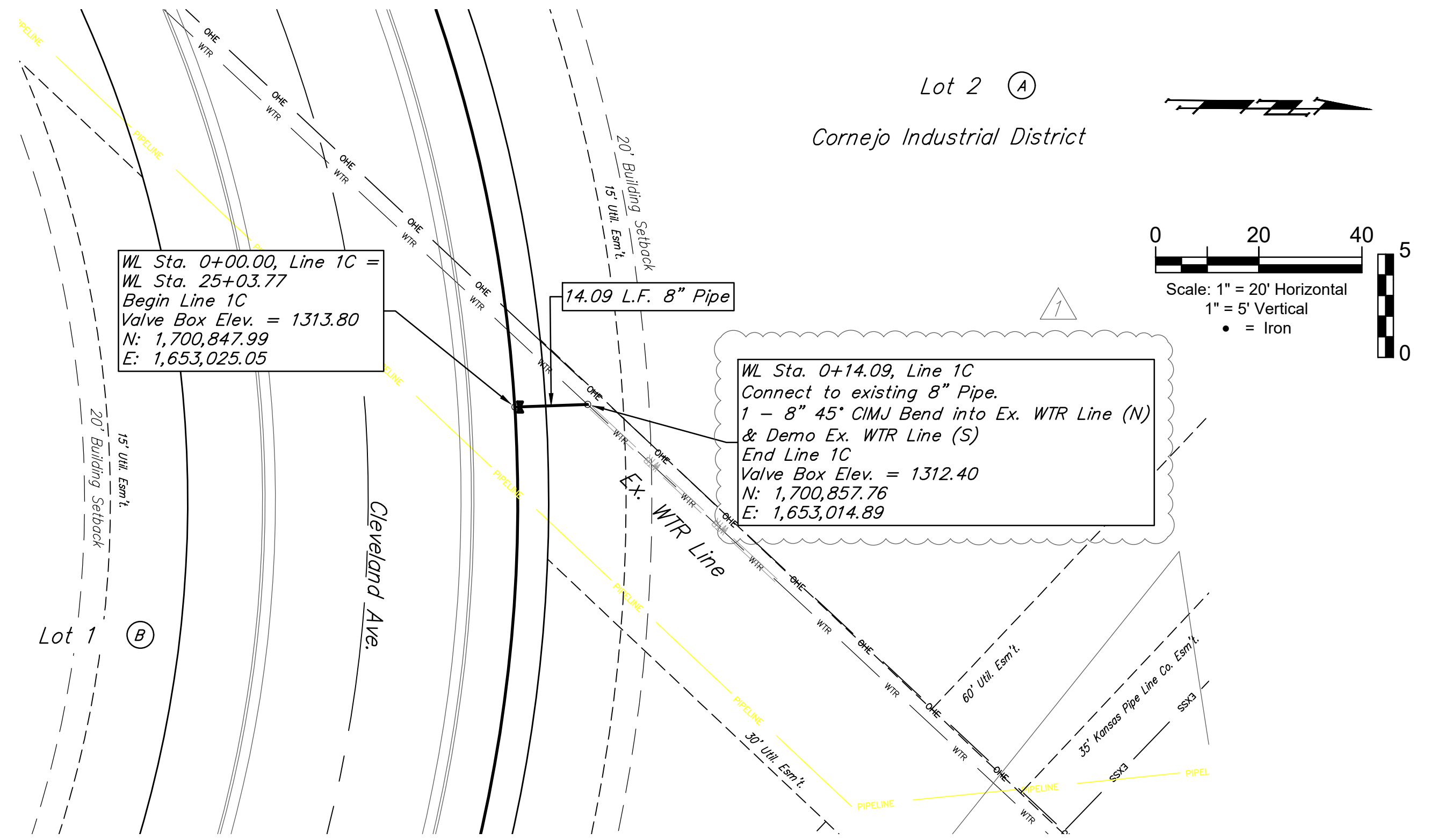


Install 41.0 L.F. Sand Backfill,  
per city Specifications.  
Fill to elev. 1308.50,  
Sta. 0+08.50 to Sta. 0+49.50

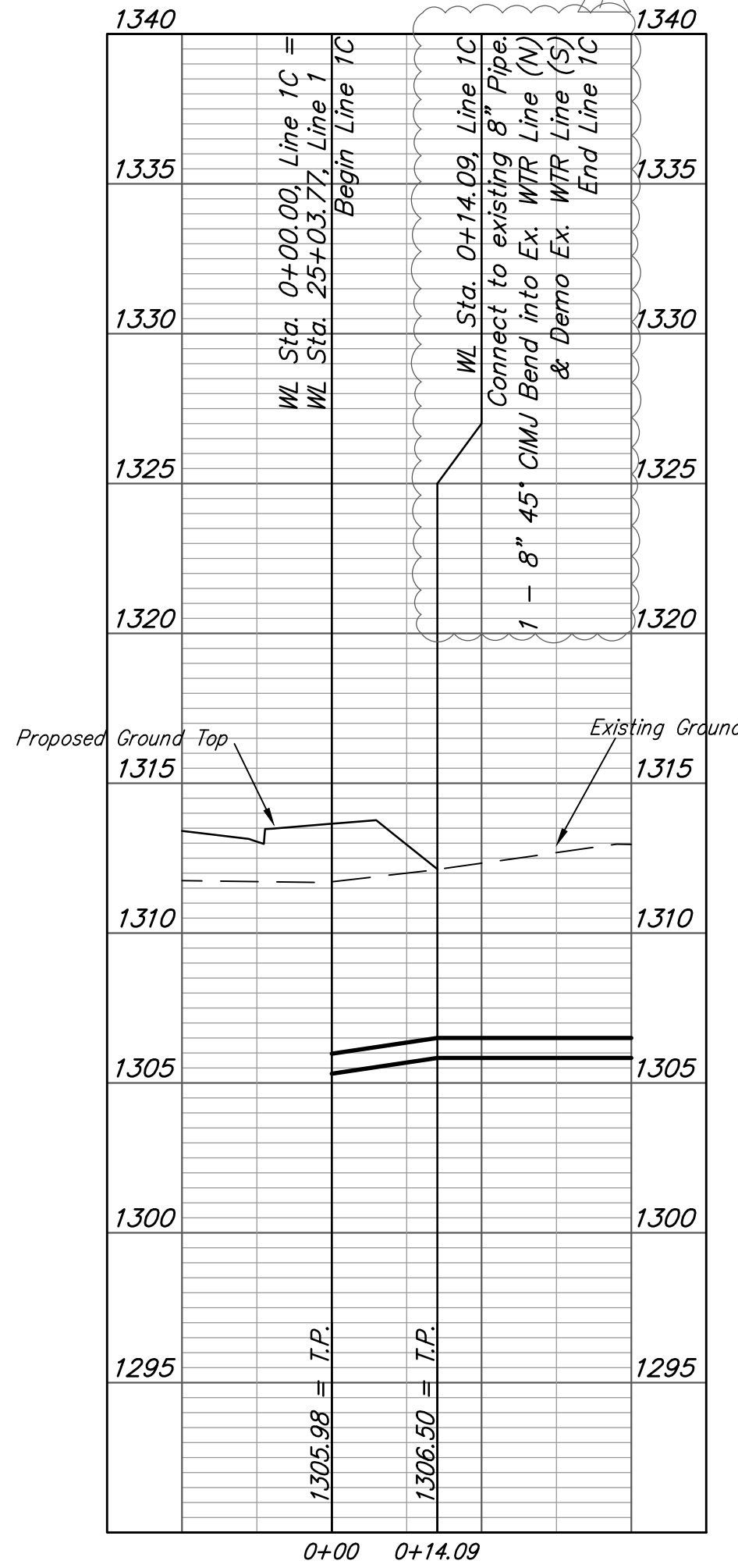
Lines 1B & 1C to be installed  
after Line 1 is placed and  
tested. Keep existing WTR  
Lines active until these lines  
are installed.

Contractor to verify  
Depth of EX. WTR  
Line to begin Bend

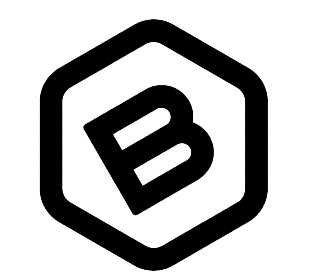
Revised 11-17-2021:  
Revised callout at Sta 0+71,  
Line 1B & 0+14, Line 1C.



## LINE 1C



**PRELIMINARY  
PLAN. NOT FOR  
CONSTRUCTION.**  
This document is  
preliminary in nature  
and is not a final, signed  
and sealed document.



**BAUGHMAN  
COMPANY**

315 Ellis St.  
Wichita, KS 67211  
316-262-7271  
BaughmanCo.com

Cornejo Industrial District

**Water Line 1B  
&  
Water Line 1C**

Water Line Improvements
PROJECT NUMBER: 448-2021-017262
DESIGN: PSB DRAWN: JA
DATE: Oct. 26, 2021
SHEET <b>14</b> OF <b>26</b>

File: E:\Projects\Cornejo Industrial District\_20-11-P603\Engineering\Phase 1 (only if Multiple Phases)\PPW\CID FPW\Felton.dwg