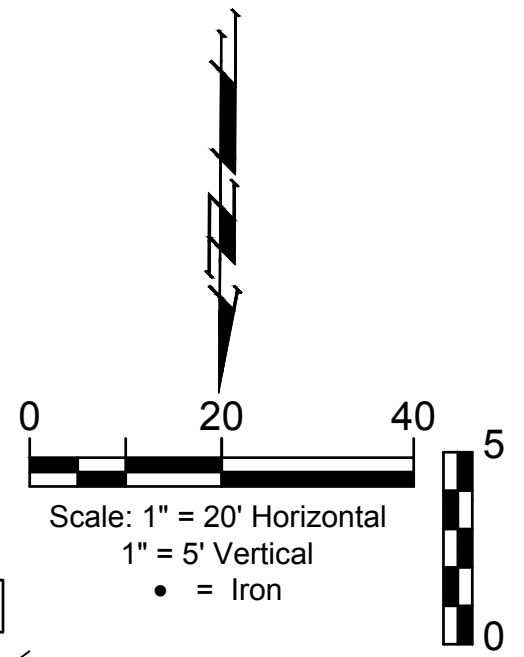
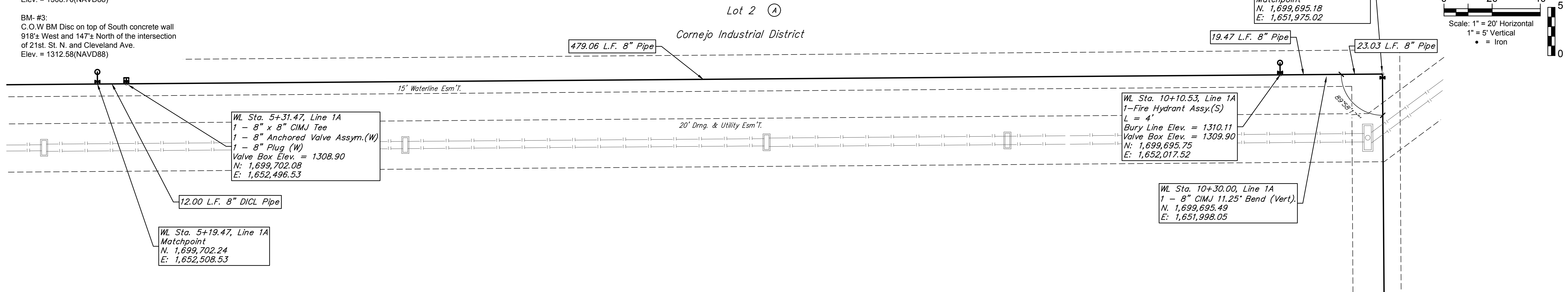


BENCHMARKS

BM- #1:
Square cut on top of South curb of 21st St. N.
334± West and 32± South of the intersection of
21st St. N. and Cleveland Ave.
Elev. = 1307.56(NAVD88)

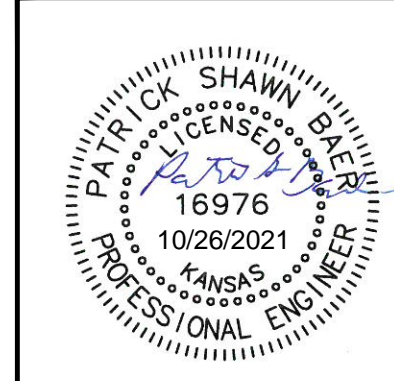
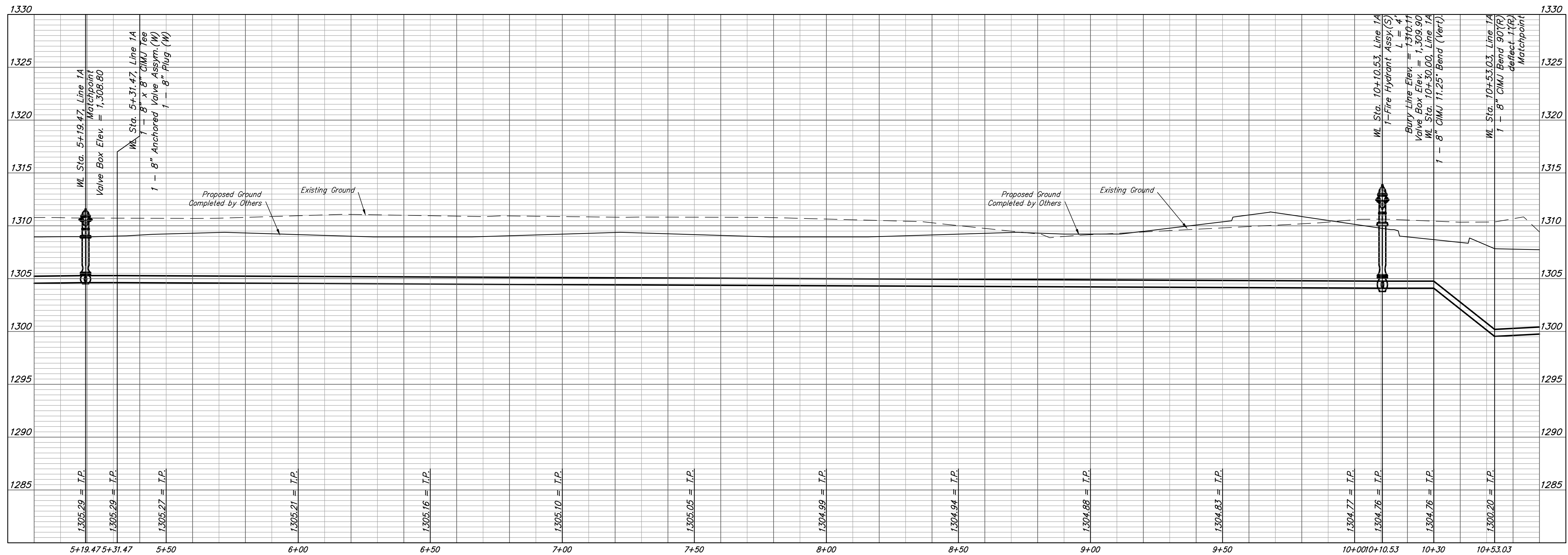
BM- #2:
Square cut on top of South concrete pad of
monitoring well 26± East and 51± South of the
intersection of 21st St. N. and Cleveland Ave.
Elev. = 1308.70(NAVD88)

BM- #3:
C.O.W BM Disc on top of South concrete wall
918± West and 147± North of the intersection
of 21st St. N. and Cleveland Ave.
Elev. = 1312.58(NAVD88)



FIRE HYDRANTS REQUIRED				
STATION	BURY LINE ELEVATION	TOP OF PIPE ELEVATION	FIRE HYDRANT BURY REQUIRED*	VALVE STEM EXT. REQUIRED (ft)*
10+10.53	1310.11	1304.76	6.0'	3'

LINE 1A



BAUGHMAN COMPANY
315 Ellis St.
Wichita, KS 67211
316-262-7271
BaughmanCo.com

Cornejo Industrial District

**Water Line 1A
STA. 5+19
to
STA. 10+53**

Water Line
Improvements

PROJECT NUMBER:
448-2021-017262

DESIGN: PSB DRAWN: JA

DATE: Oct. 26, 2021

SHEET OF
10 26

File: E:\Projects\Cornejo Industrial District_20-11-P803\Engineering\Phase 1 (only if Multiple Phases)\PPW\CID PPW Peltion.dwg