

BENCHMARKS

BM- #1:
Square cut on top of South curb of 21st St. N.
334± West and 32± South of the intersection of
21st St. N. and Cleveland Ave.
Elev. = 1307.56(NAVD88)

BM- #2:
Square cut on top of South concrete pad of
monitoring well 26± East and 51± South of the
intersection of 21st St. N. and Cleveland Ave.
Elev. = 1308.70(NAVD88)

BM- #3:
C.O.V BM Disc on top of South concrete wall
918± West and 147± North of the intersection
of 21st St. N. and Cleveland Ave.
Elev. = 1312.58(NAVD88)

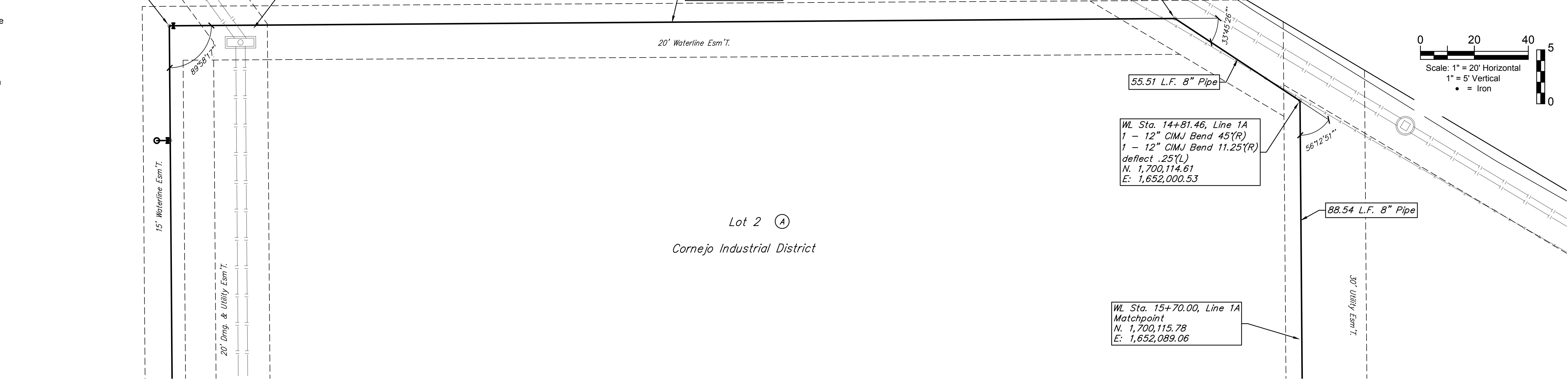
Sta. 10+53.03, Line 1A
chpoint
1,699,695.18
1,651,975.02

CAUTION!
Prop. 42" SWS Line
FL=1301.89
Crossing

WL Sta. 14+25.95, Line 1A
1 - 12" CIMJ Bend 22.5(R)
1 - 12" CIMJ Bend 11.25(R)
deflect .75(L)
N: 1,700,068.08
E: 1,651,970.27

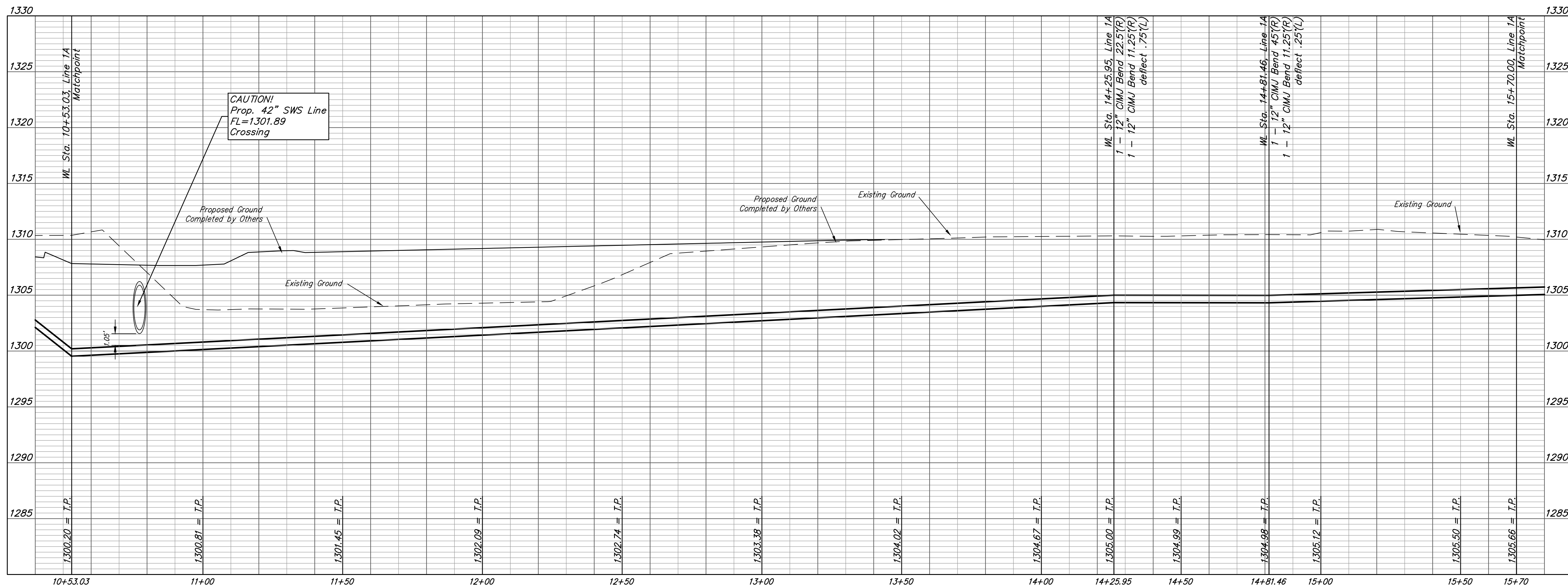
WL Sta. 14+81.46, Line 1A
1 - 12" CIMJ Bend 45(R)
1 - 12" CIMJ Bend 11.25(R)
deflect .25(L)
N: 1,700,114.61
E: 1,652,000.53

WL Sta. 15+70.00, Line 1A
Matchpoint
N: 1,700,115.78
E: 1,652,089.06



Lot 2 (A)
Cornejo Industrial District

LINE 1A



BAUGHMAN COMPANY
315 Ellis St.
Wichita, KS 67211
316-262-7271
BaughmanCo.com

Cornejo Industrial District

**Water Line 1A
STA. 10+53
to
STA. 15+70**

Water Line
Improvements

PROJECT NUMBER:
448-2021-017262

DESIGN: PSB DRAWN: JA

DATE: Oct. 26, 2021

SHEET **11** OF **26**

File: E:\Projects\Cornejo Industrial District_20-11-P803\Engineering\Phase 1 (only if Multiple Phases)\PPW\CID PPW\Fellion.dwg