

# BENCHMARKS

BM- #1:  
Square cut on top of South curb of 21st St. N.  
334± West and 32± South of the intersection of  
21st St. N. and Cleveland Ave.  
Elev. = 1307.56(NAVD88)

BM- #2:  
Square cut on top of South concrete pad of  
monitoring well 26± East and 51± South of the  
intersection of 21st St. N. and Cleveland Ave.  
Elev. = 1308.70(NAVD88)

BM- #3:  
C.O.W BM Disc on top of South concrete wall  
918± West and 147± North of the intersection  
of 21st St. N. and Cleveland Ave.  
Elev. = 1312.58(NAVD88)

WL Sta. 0+00.00, Line 1  
Field verify Existing 12" Water Line Depth  
1 - 12" x 12" Tapping Sleeve  
1 - 12" Tapping Valve & Valve Box  
1 - 12" CIMJ 22.5° Bend(W)  
1 - 12" CIMJ 11.25° Bend(W)  
Tapping sleeve, tapping valve & valve box  
to be furnished and installed by the  
City of Wichita Water Department.  
Valve box to be set to grade by Contractor.  
Contractor to reimburse Water Dept. for  
tapping sleeve & valve installation  
Begin Water Line 1  
Valve Box Elev. = 1312.05  
N: 1,699,055.14  
E: 1,653,698.81

Ex. New York Ave.  
to be vacated  
and removed  
up to Prop. New York

New York Ave.

15' Bike Path Est. l.

30' Temporary Access Est. l.

55' Utility Est. l.

CAUTION!  
AT&T  
Crossing

Ex. 12" PVC

DEPTH UNKNOWN  
Contractor to Verify  
Depth & Location of  
AT&T Lines Prior to  
Construction.

4' Minimum Depth per  
Design Standards

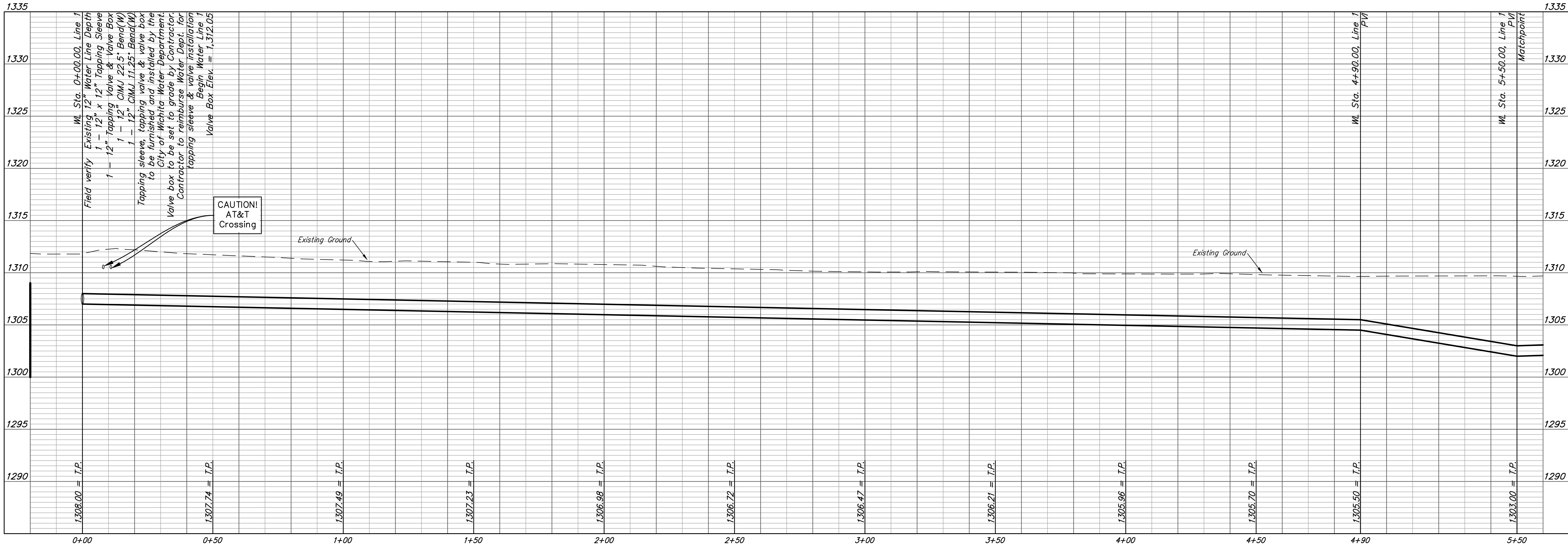
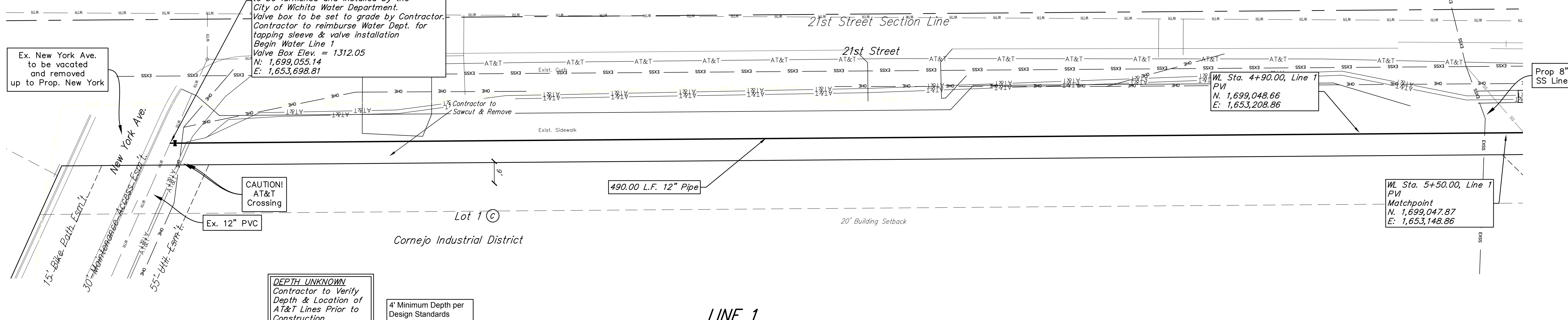
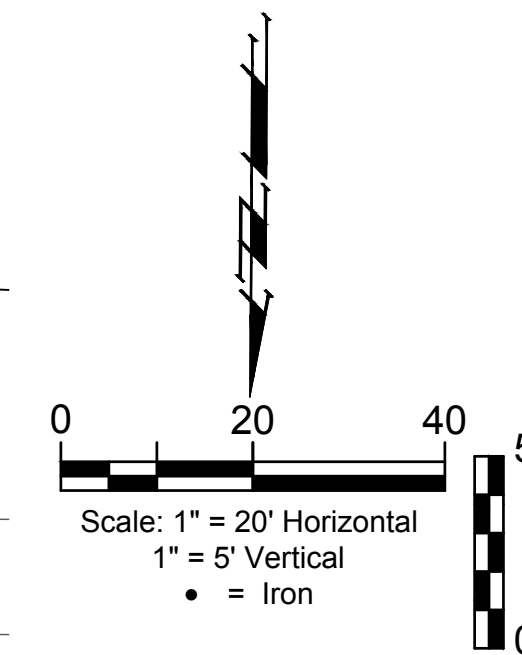
490.00 L.F. 12" Pipe

Lot 1 ©

Cornejo Industrial District

20' Building Setback

LINE 1



**BAUGHMAN COMPANY**  
315 Ellis St.  
Wichita, KS 67211  
316-262-7271  
BaughmanCo.com

Cornejo Industrial District

**Water Line 1  
Sta. 0+00  
to  
Sta. 5+50**

Water Line  
Improvements

PROJECT NUMBER:  
448-2021-017262

DESIGN: PSB DRAWN: JA

DATE: Oct. 26, 2021

SHEET **2** OF **26**

File: E:\Projects\Cornejo Industrial District\_20-11-P803\Engineering\Phase 1 (only if Multiple Phases)\PPW\CID PPW Petition.dwg