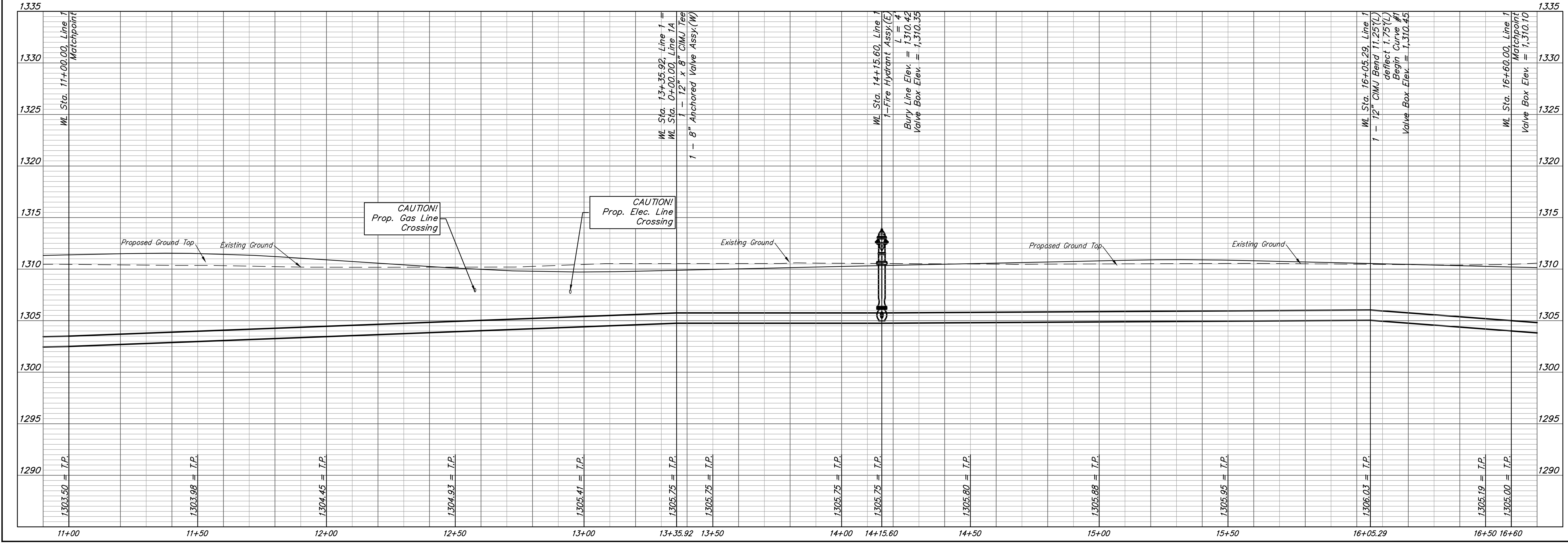


- BENCHMARKS**
- BM- #1:
 Square cut on top of South curb of 21st St. N. 334± West and 32± South of the intersection of 21st St. N. and Cleveland Ave.
 Elev. = 1307.56(NAVD88)
 - BM- #2:
 Square cut on top of South concrete pad of monitoring well 26± East and 51± South of the intersection of 21st St. N. and Cleveland Ave.
 Elev. = 1308.70(NAVD88)
 - BM- #3:
 C.O.W BM Disc on top of South concrete wall 918± West and 147± North of the intersection of 21st St. N. and Cleveland Ave.
 Elev. = 1312.58(NAVD88)

| FIRE HYDRANTS REQUIRED | | | | |
|------------------------|---------------------|-----------------------|-----------------------------|--------------------------------|
| STATION | BURY LINE ELEVATION | TOP OF PIPE ELEVATION | FIRE HYDRANT BURY REQUIRED* | VALVE STEM EXT. REQUIRED (ft)* |
| 14+15.60 | 1310.42 | 1305.75 | 5.5' | 3' |

LINE 1



BAUGHMAN COMPANY

315 Ellis St.
 Wichita, KS 67211
 316-262-7271
 BaughmanCo.com

Cornejo Industrial District

**Water Line 1
 Sta. 11+00
 to
 Sta. 16+60**

Water Line Improvements

PROJECT NUMBER:
 448-2021-017262

DESIGN: PSB DRAWN: JA

DATE: Oct. 26, 2021

SHEET **4** OF **26**

File: E:\Projects\Cornejo Industrial District_20-11-P803\Engineering\Phase 1 (only if Multiple Phases)\PPW\CID PPW\Fellion.dwg