

Sta. 9+25.2 SWS Line No. 1=
Sta. 43+36.57, 89.92' Lt. @ Rock Road
Connect to Existing Inlet
Top Elev.=164.70
Install 74.8 L.F. 18" RCP (NE)

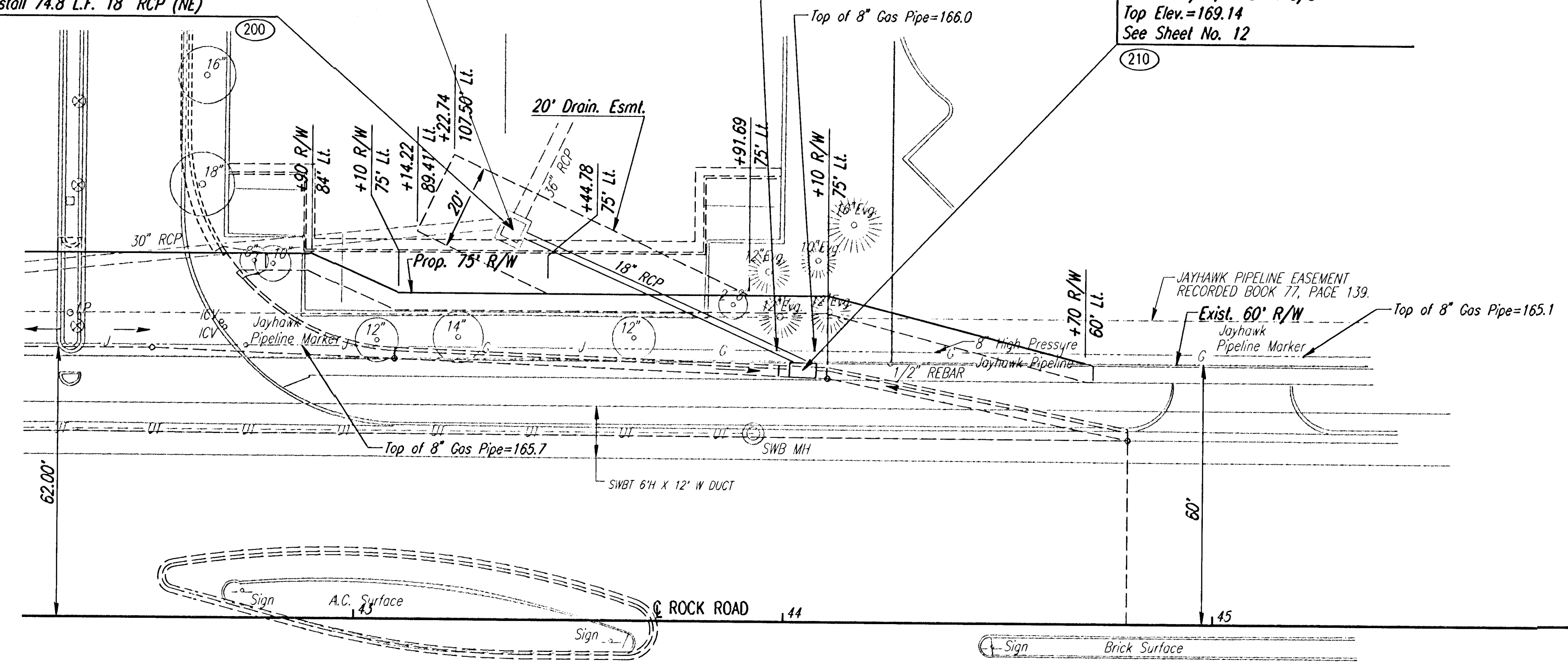
SWS Inlet
Top=169.29
E=164.44(W)
E=164.80(S)

CAUTION!!!
8" High Pressure Gas
(Jayhawk Pipeline)

Sta. 10+00.0 SWS Line No. 1=
Sta. 44+04.24, 58.03' Lt. @ Rock Road
Construct Type II Curb Inlet
L=6'-2 1/2", W=3'-4 3/8"
Top Elev.=169.14
See Sheet No. 12



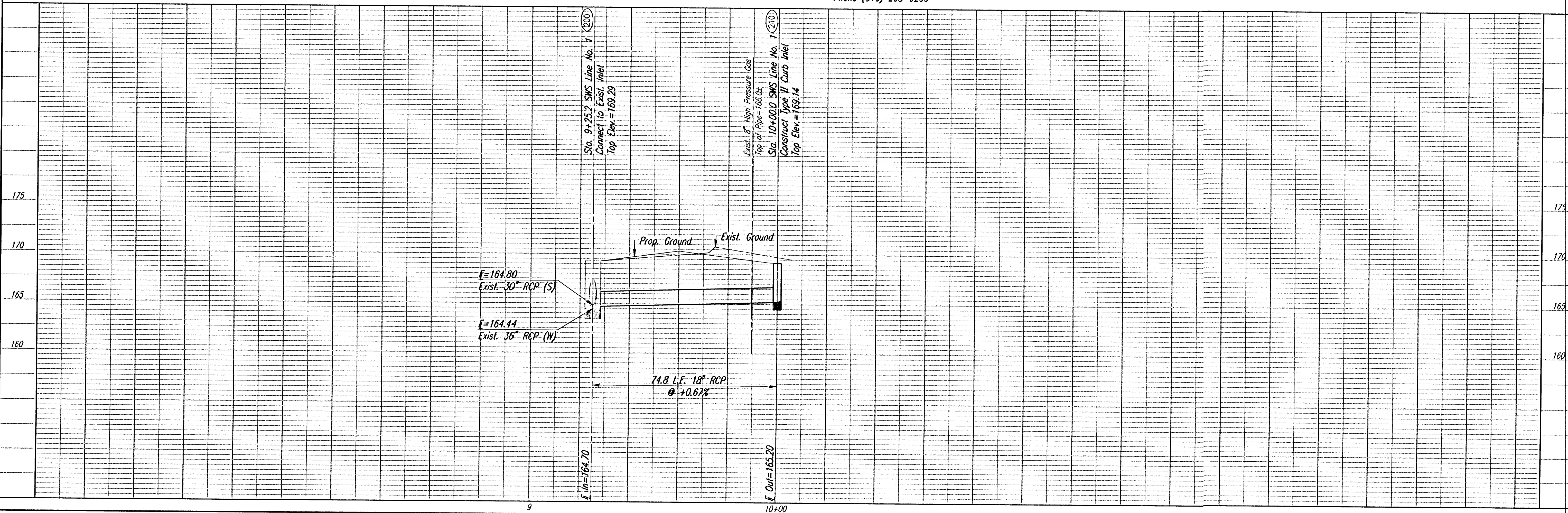
SCALE: 1"=20'



SWS LINE NO. 1 COORDINATE LIST		
POINT	NORTH	EAST
200	20192.8890	19970.0920
210	20260.5585	20001.9869

(200) = Coordinate Point No.

Coordinate with Site Contractor c/o Roger Mulanax,
The Law Company, Inc., for Pavement Removal
and Adjacent Construction.
Phone (316) 268-0200



I:1999/96687/001/svs/nel.dgn
Date: Platred: June 27, 2000
Deliver to: Penni Moore

ROCK ROAD
CITY OF WICHITA

SWS LINE NO. 1
STA. 9+25.2 TO STA. 10+00.0
C.O.W. PROJ. NO. 472-8322

Professional Engineering Consultants, P.A.
303 S. TOPICKA • WICHITA, KANSAS 67202
316-262-2661 • FAX 316-262-3003

Designed by: BEB, PMU
Drawn by: BLS

Job No. 95687-1
Date: MAY 2000

Sheet 11 of 32