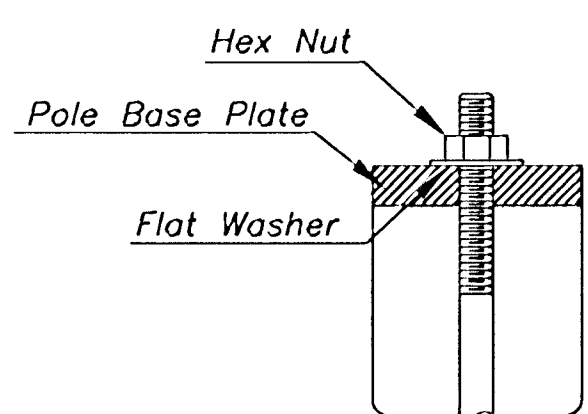


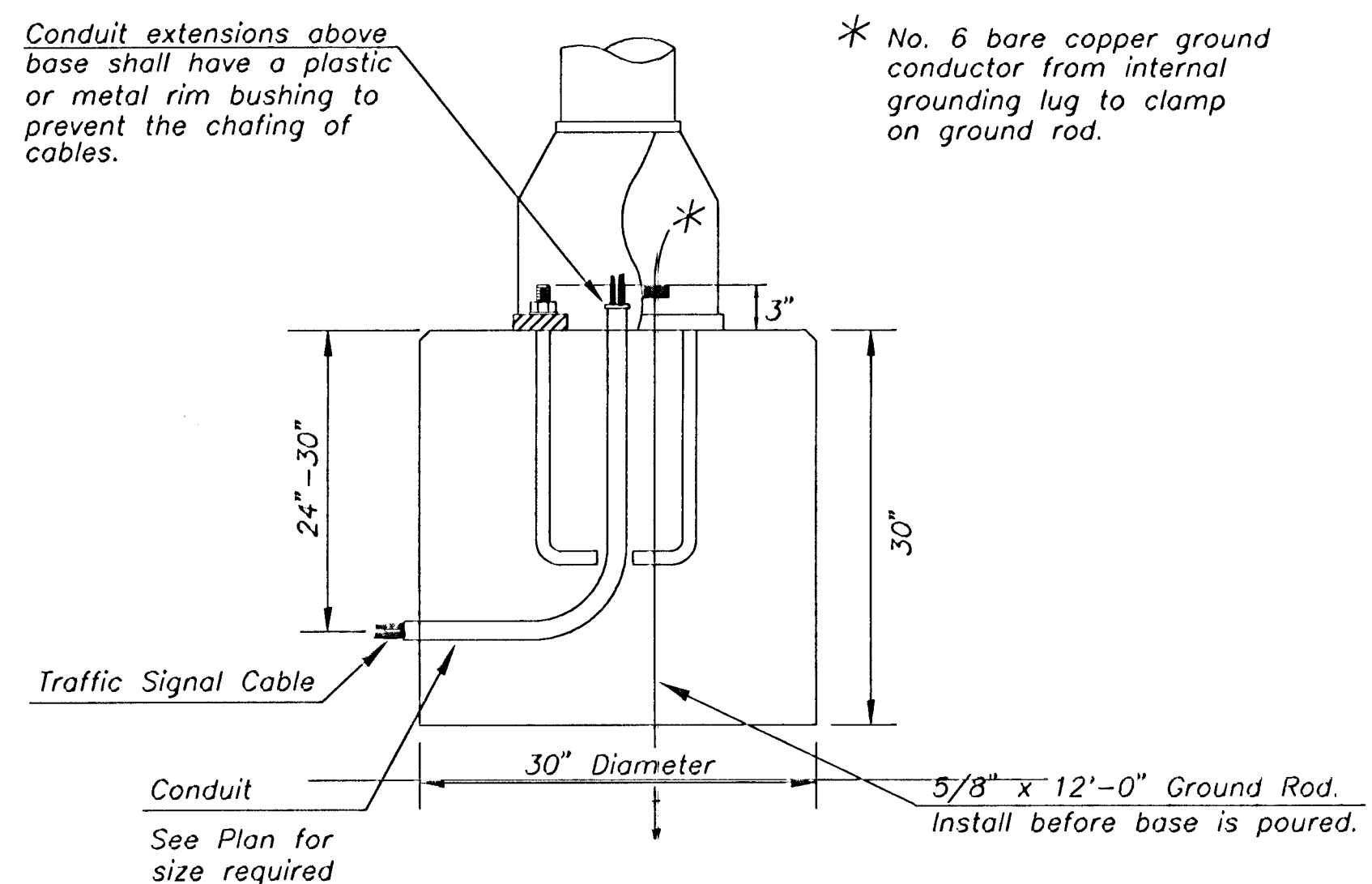
DSNR: PMM OPER: BJS SCALE: 1"=10'
 I:/1999/99687/001/PEDESTAL.DGN 6-26-2000

Use Keystone "No-Weld Number 1 Anti-Seize Compound" on all bolts & nuts.



ANCHOR BOLT DETAIL

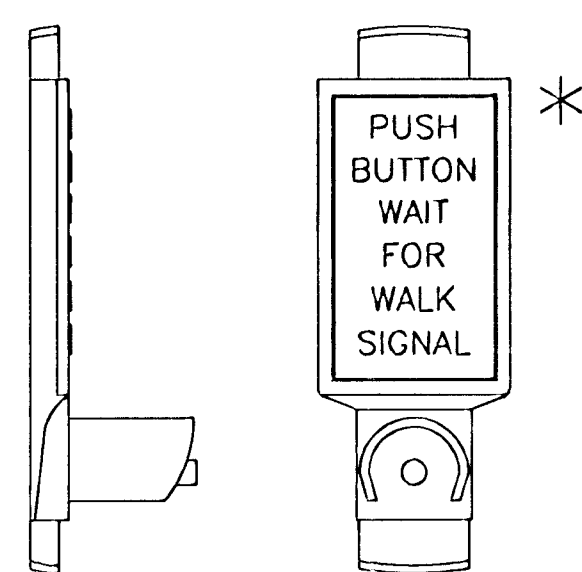
Conduit extensions above base shall have a plastic or metal rim bushing to prevent the chafing of cables.



CONCRETE BASE DETAIL

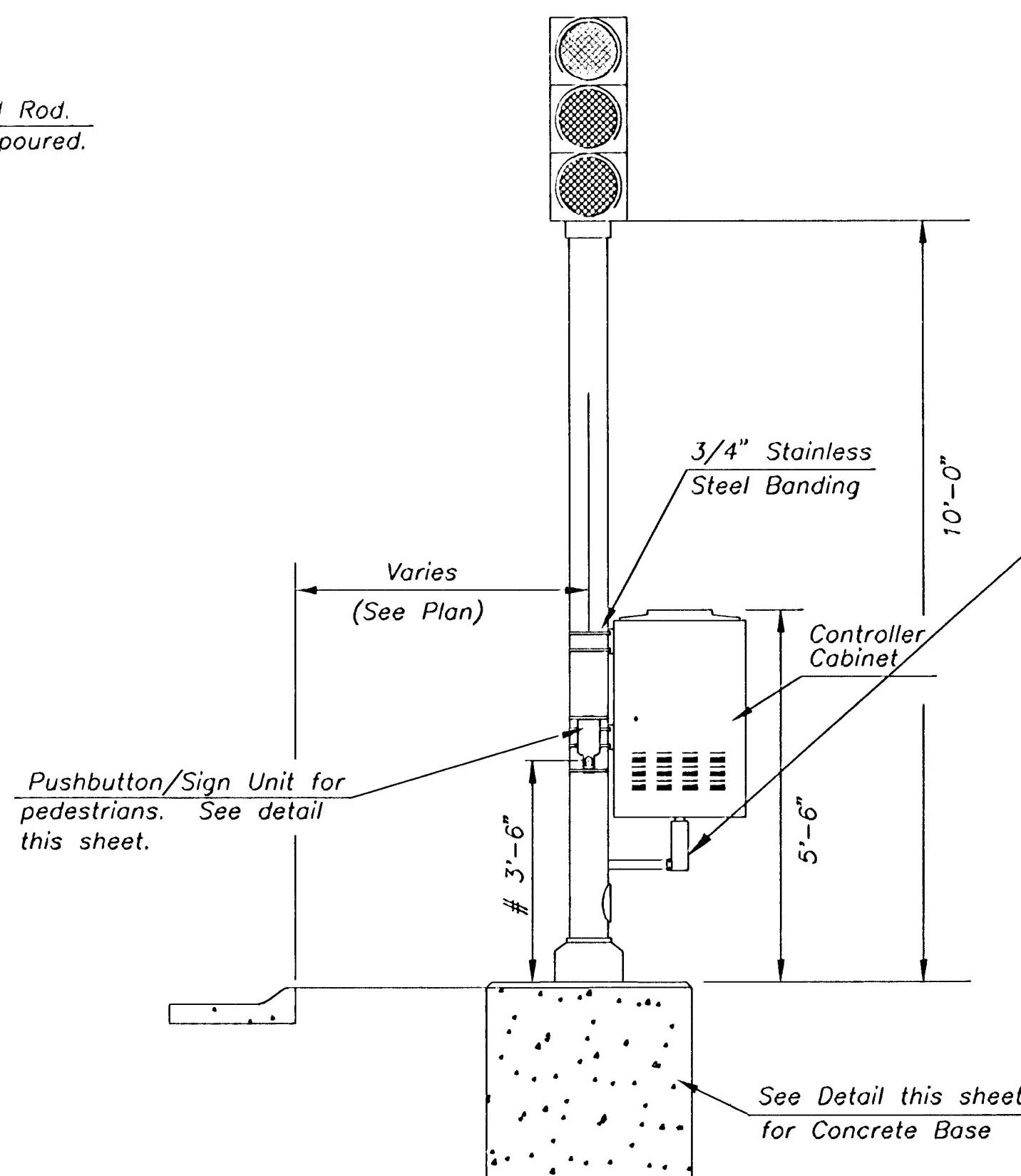
* No. 6 bare copper ground conductor from internal grounding lug to clamp on ground rod.

*NOTE: MESSAGE TO BE CAST WITH HOUSING (ONE PIECE)



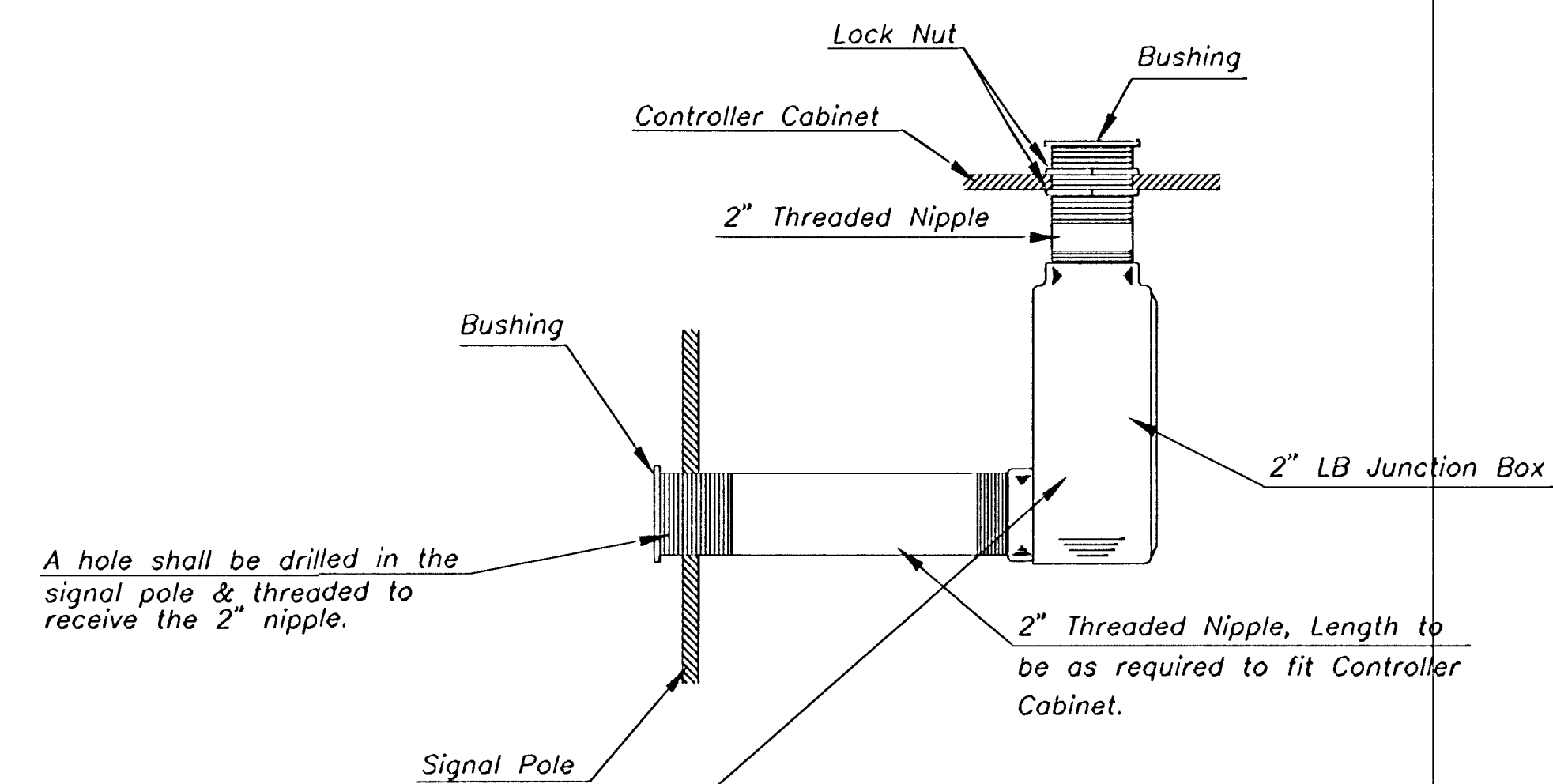
PEDESTRIAN PUSHBUTTON/SIGN UNIT DETAIL

INSTALL PEDESTRIAN PUSHBUTTON UNDERNEATH CORRESPONDING PEDESTRIAN SIGNAL HEAD ON SIDE OF POLE NEAREST CROSSWALK. UNIT SHALL BE FIRMLY ATTACHED TO THE SIDE OF POLE WITH 3/4" STEEL BANDS. SHARP ENDS SHALL BE FOLDED UNDER TO PREVENT INJURY TO PEDESTRIANS.



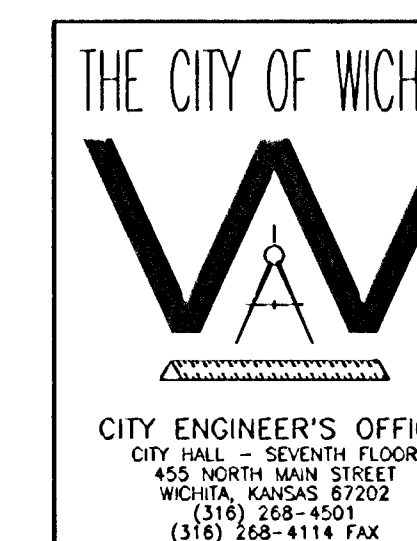
TRAFFIC SIGNAL PEDESTAL

From Sidewalk Finish Grade to Center of Pushbutton.



A hole shall be drilled in the signal pole & threaded to receive the 2" nipple.

2" Threaded Nipple, Length to be as required to fit Controller Cabinet.



PROJECT DESCRIPTION		
TRAFFIC SIGNAL PEDESTAL & CONCRETE BASE DETAIL SHEET		
PROJECT NUMBER		
472-76-245-83222-000-000-001		
DRAWN BY: T.M.	SCALE	REVISED BY:
DATE: MAY 97	NO SCALE	DATE:
CITY OF WICHITA DEPARTMENT OF PUBLIC WORKS		
DIVISION OF TRAFFIC ENGINEERING		
WM. G. MCKINLEY P.E.	TRAFFIC ENGINEER	SHEET 20 OF 32