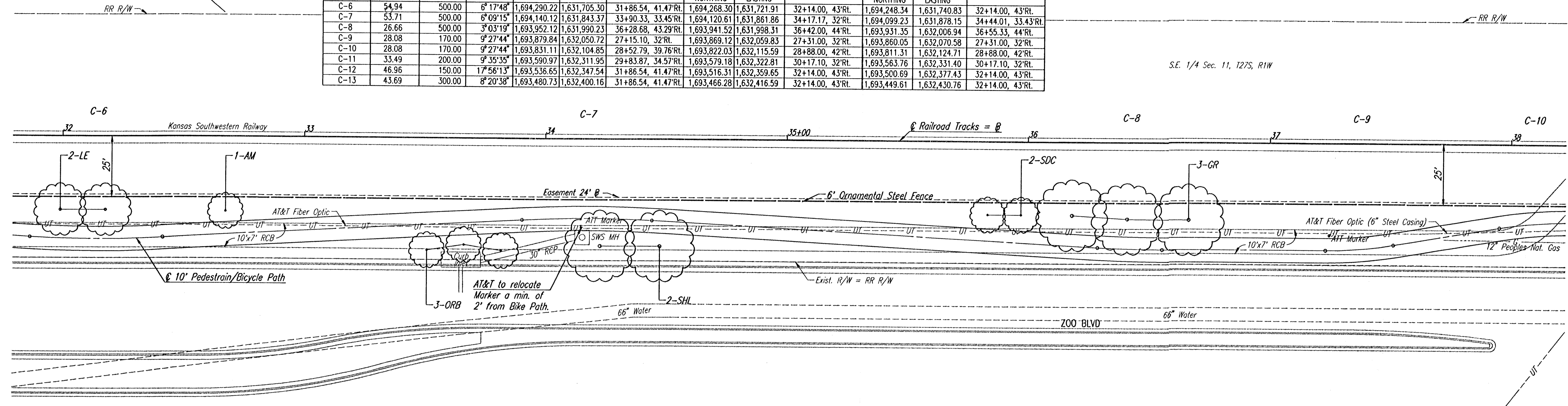


**Q CURVE ALIGNMENT DATA**

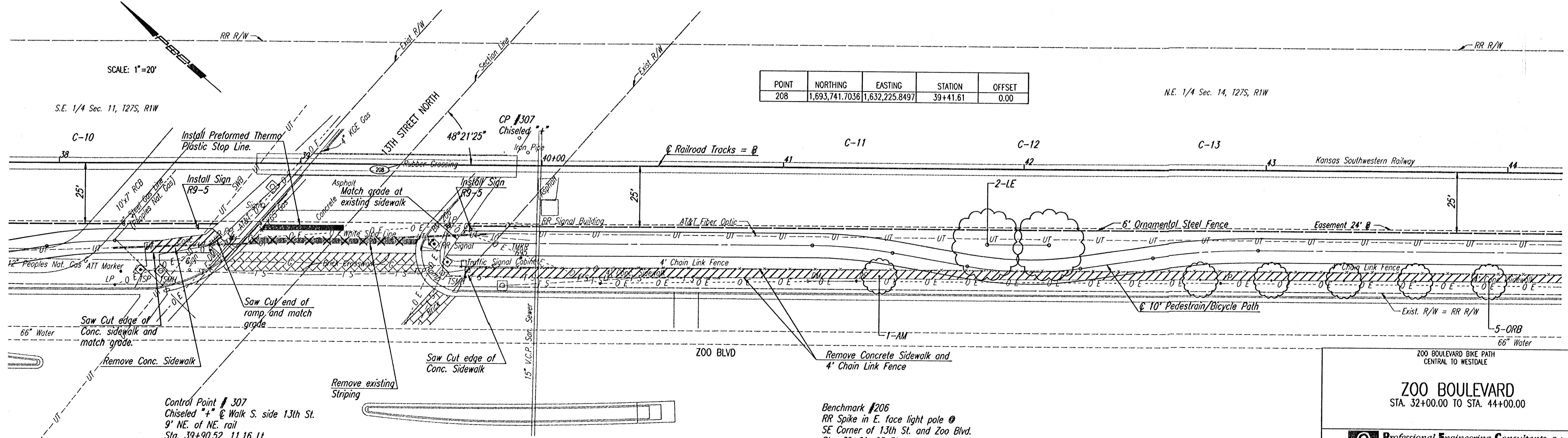
CURVE	Q ARC LENGTH	RADIUS	DELTA	PC		STATION	PI		STATION	PT		STATION
				NORTHING	EASTING		NORTHING	EASTING		NORTHING	EASTING	
C-6	54.94	500.00	6°17'48"	1,694,290.22	1,631,705.30	31+86.54, 41.47°Rt.	1,694,268.30	1,631,721.91	32+14.00, 43°Rt.	1,694,248.34	1,631,740.83	32+14.00, 43°Rt.
C-7	53.71	500.00	6°09'15"	1,694,140.12	1,631,843.37	33+90.33, 33.45°Rt.	1,694,120.61	1,631,861.86	34+17.17, 32°Rt.	1,694,099.23	1,631,878.15	34+44.01, 33.43°Rt.
C-8	26.66	500.00	3°03'19"	1,693,952.12	1,631,990.23	36+28.68, 43.29°Rt.	1,693,941.52	1,631,998.31	36+42.00, 44°Rt.	1,693,931.35	1,632,006.94	36+55.33, 44°Rt.
C-9	28.08	170.00	9°27'44"	1,693,879.84	1,632,050.72	27+15.10, 32°Rt.	1,693,869.12	1,632,059.83	27+31.00, 32°Rt.	1,693,860.05	1,632,070.58	27+31.00, 32°Rt.
C-10	28.08	170.00	9°27'44"	1,693,831.11	1,632,104.85	28+52.79, 39.76°Rt.	1,693,822.03	1,632,115.59	28+88.00, 42°Rt.	1,693,811.31	1,632,124.71	28+88.00, 42°Rt.
C-11	33.49	200.00	9°35'35"	1,693,590.97	1,632,311.95	29+83.87, 34.57°Rt.	1,693,579.18	1,632,322.81	30+17.10, 32°Rt.	1,693,563.76	1,632,331.40	30+17.10, 32°Rt.
C-12	46.96	150.00	17°56'13"	1,693,536.65	1,632,347.54	31+86.54, 41.47°Rt.	1,693,516.31	1,632,359.65	32+14.00, 43°Rt.	1,693,500.69	1,632,377.43	32+14.00, 43°Rt.
C-13	43.69	300.00	8°20'38"	1,693,480.73	1,632,400.16	31+86.54, 41.47°Rt.	1,693,466.28	1,632,416.59	32+14.00, 43°Rt.	1,693,449.61	1,632,430.76	32+14.00, 43°Rt.

SCALE: 1"=20'



S.E. 1/4 Sec. 11, T27S, R1W

SCALE: 1"=20'



N.E. 1/4 Sec. 14, T27S, R1W

POINT	NORTHING	EASTING	STATION	OFFSET
208	1,693,741.7036	1,632,225.8497	39+41.61	0.00

Control Point # 307  
Chiseled "+" @ Walk S. side 13th St.  
9' NE. of NE. rail  
Sta. 39+90.52, 11.16 Lt.  
N= 1,693,711.655, E= 1,632,266.030  
Elev. = 133.32

Benchmark #206  
RR Spike in E. face light pole @  
SE Corner of 13th St. and Zoo Blvd.  
Sta. 39+61, 25 Rt.  
Elev. = 134.54

ZOO BOULEVARD BIKE PATH  
CENTRAL TO WESTDALE  
**ZOO BOULEVARD**  
STA. 32+00.00 TO STA. 44+00.00

**Professional Engineering Consultants, P.A.**  
303 S. TOPEKA • WICHITA, KANSAS 67202  
316-262-2691 • FAX 316-262-3003

Designed by	RMH	Checked by	
Drawn by	DEP, SAD	Date	SEPTEMBER 2001
		Job No.	96450-002

DSNR, SJD, OPER, SJD, SCALE: 1"=20.00  
 C:\1996\96450\002\96450-002.dwg 09-04-2002 09:03:42 am