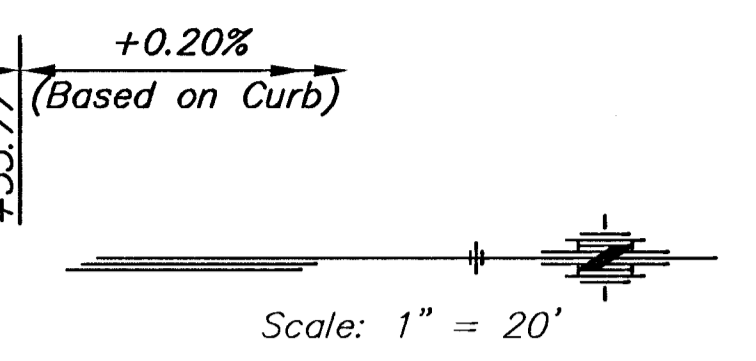
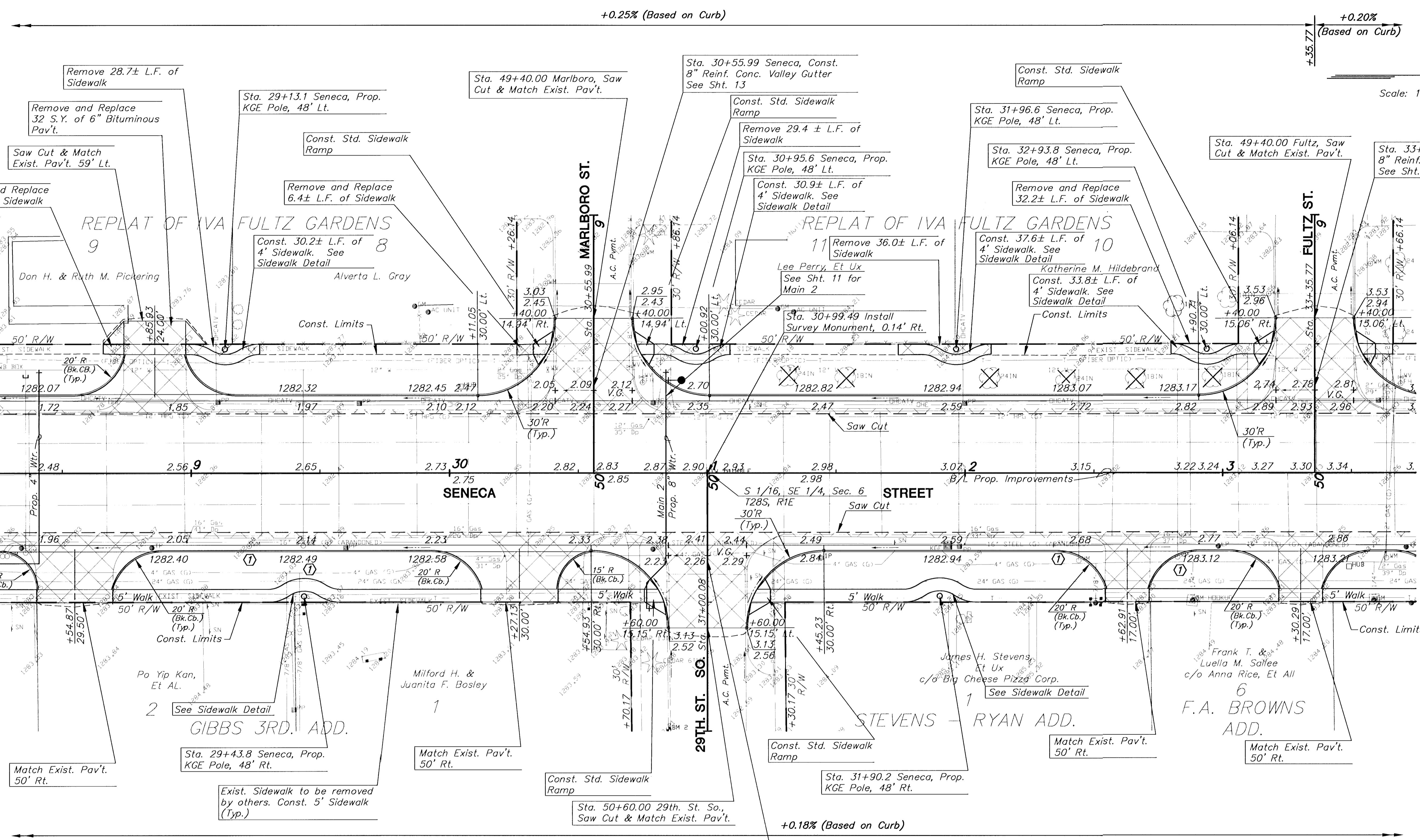


FHWA REG NO.	STATE	PROJECT NO.	YEAR	SHEET NO.	SHEETS
7	KANSAS	472-83084	2000	4	58



① = New 1" Service Lines are to be installed from the existing 12" Main to the New Coppersettlers, Meter Boxes and Lids being installed behind the new curb line.

Note:
See Sheet 11 for callouts on Water Line work at the intersection 29th. St. So. & Seneca.

BM #2 "I" cut on top of curb, S. side of 29th. St. So. Sta. 30+85.02
99.35' Rt. Elev.=1283.17



- UTILITY OWNERS**
- G - Kansas Gas Service (316)383-8600
 - W - City of Wichita Water & Sewer Department (316)268-4940
 - T - Southwestern Bell Telephone Co. (800)246-8464, press ## for assistance
 - E - Kansas Gas and Electric (316)383-8600
 - CATV - Cox Communicatins (316)262-4270
 - SS - City of Wichita Water & Sewer Department (316)268-4940
 - SWS - City of Wichita Stormwater Utility (316)268-4071

KANSAS DEPARTMENT OF TRANSPORTATION

**SOUTH SENECA STREET
28+50 TO 33+50**

PROJECT NO. 472-83084 SEDGWICK CO.

MID-KANSAS ENGINEERING CONSULTANTS, INC.

WICHITA, KANSAS

DESIGNED BY: DCH	CHECKED BY: DCH
DRAWN BY: WNU	DATE: MAY 1, 2000 SHEET 4 OF 58

H:\CIVIL\SENECA\94005-2\PAV\94005E2.DWG Mon May 01 15:39:53 2000

94005E2