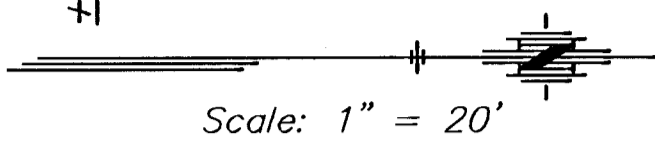
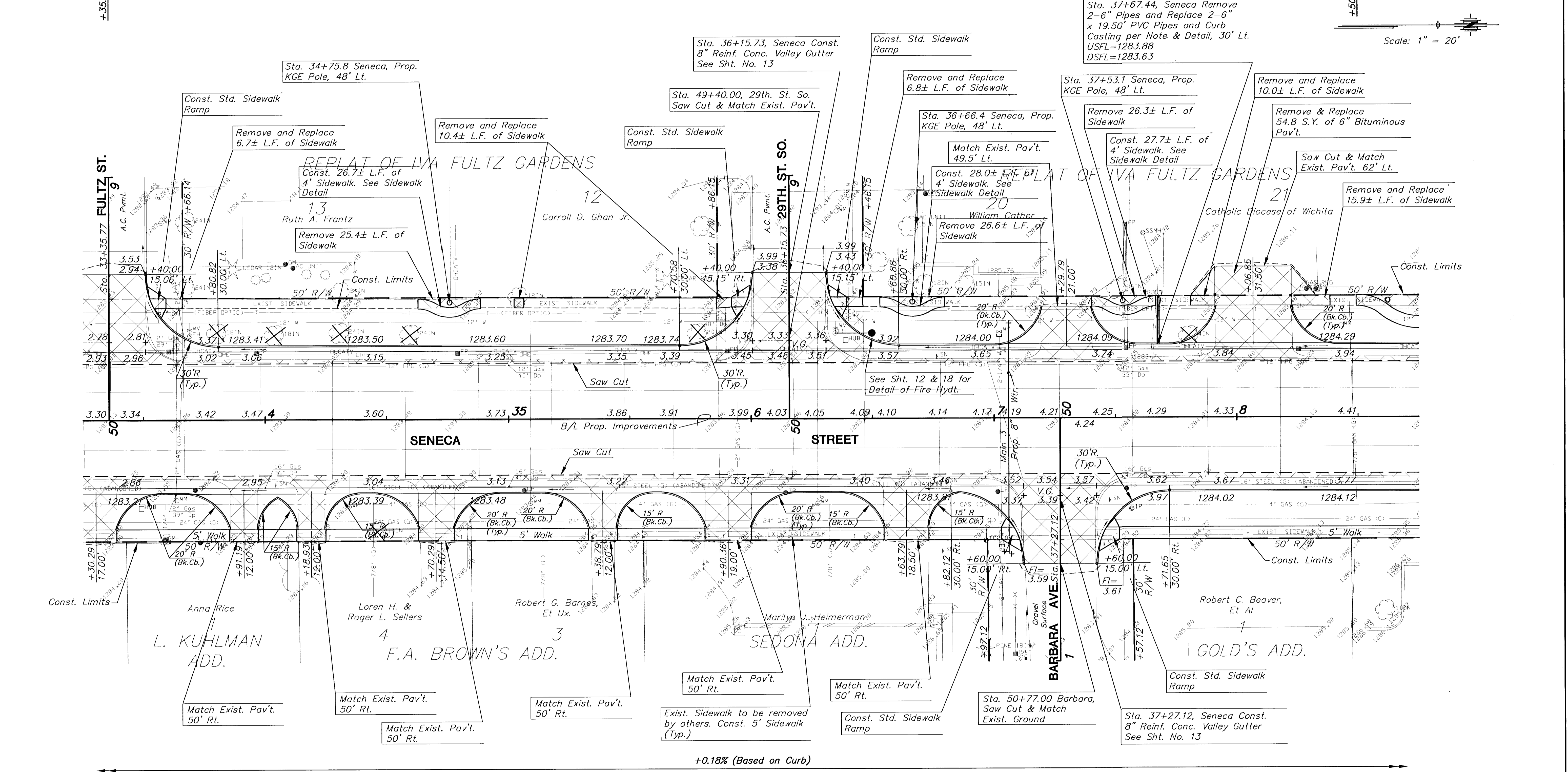


FHWA REG NO.	STATE	PROJECT NO.	YEAR	SHEET NO.	SHEETS
7	KANSAS	472-83084	2000	5	58

+0.25% (Based on Curb) +0.20% (Based on Curb) +0.14% (Based on Curb)



**LEGEND**  
 PAVEMENT, DRIVEWAY AND/OR SIDEWALK REMOVAL.  
**UTILITY OWNERS**

- G - Kansas Gas Services (316)383-8600
- W - City of Wichita Water & Sewer Department (316)268-4940
- T - Southwestern Bell Telephone Co. (800)246-8464, press ## for assistance
- E - Kansas Gas and Electric (316)383-8600
- CATV - Cox Communications (316)262-4270
- SS - City of Wichita Water & Sewer Department (316)268-4940
- SWS - City of Wichita Stormwater Utility (316)268-4071

**Note:**  
 See Sheet 12 for callouts on Water Line work at the intersection of Barbara and Seneca.

BM #3 "I" cut on top of Residential border curb @ SE cor. Barbara and Seneca. Sta. 36+96.54 Elev.=1285.07

KANSAS DEPARTMENT OF TRANSPORTATION

**SOUTH SENECA STREET  
33+50 TO 38+50**

PROJECT NO. 472-83084 SEDGWICK CO.  
**MID-KANSAS ENGINEERING CONSULTANTS, INC.**  
 WICHITA, KANSAS

DESIGNED BY: DCH	CHECKED BY: DCH
DRAWN BY: WJW	DATE: MAY 1, 2000 SHEET 5 OF 58

H:\CIVIL\SENECA\94005-2\PAV\94005E3.DWG Mon May 01 15:40:43 2000