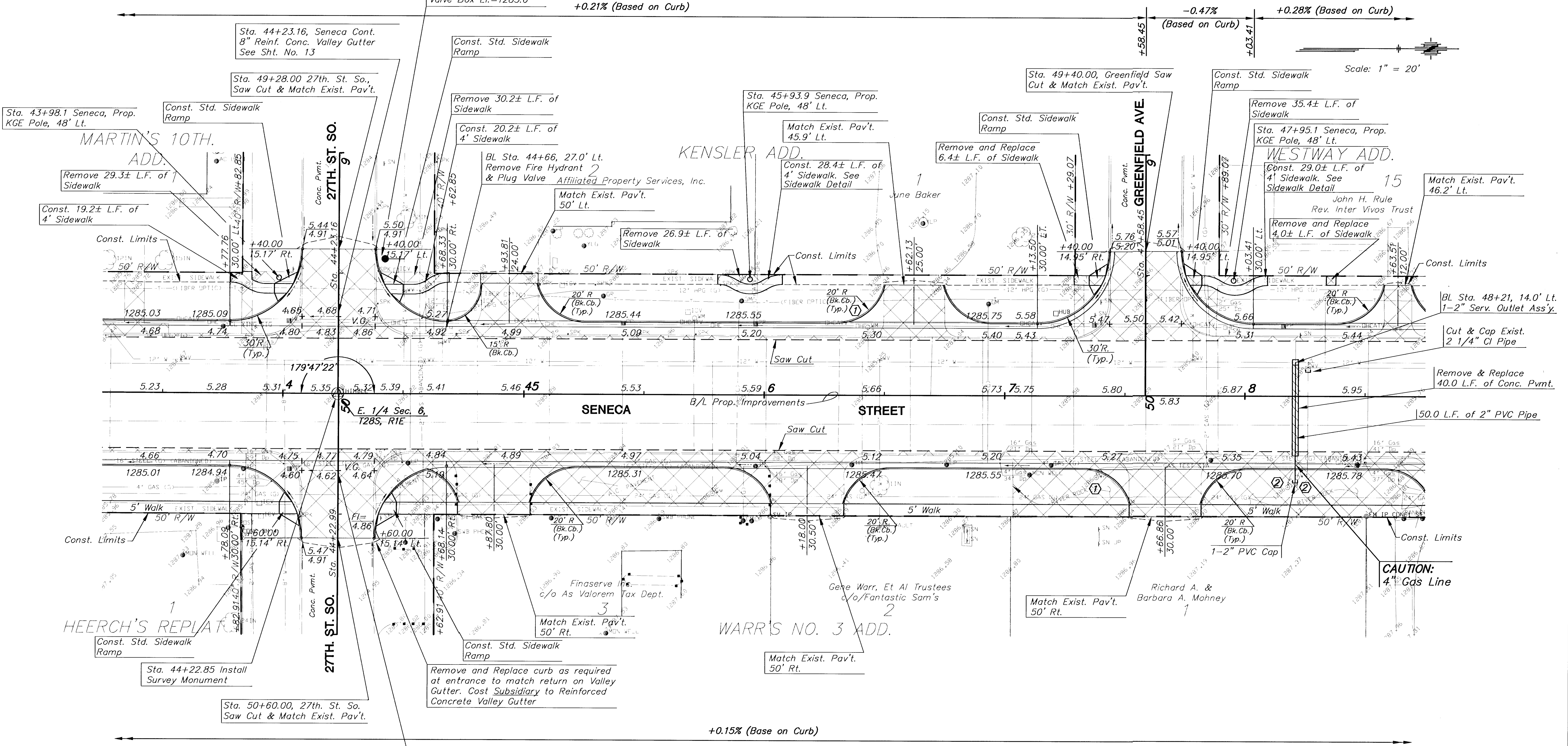


FHWA REG. NO.	STATE	PROJECT NO.	YEAR	SHEET NO.	SHEETS
7	KANSAS	472-83084	2000	7	58

P.I. STA. 44+22.85
 E 1/4 Sec. 6, T28S, R1E
 1. Found Pipe in Thimble @ Seneca & 27th. St. So.
 2. SW Bolt on Conc. LP Base (No Pole) 66.2' N.E.
 3. NW Cor. Conc. Slab 68.2' S.E.
 4. North Face HLP 36.0' W.S.W.
 5. SE Cor. Conc. Sign Base 103.3' N.N.W.

BL Sta. 44+50, 56.0' Lt.
 1-Fire Hydt.
 8.0 L.F. of 6" DI CL Pipe
 (City Water Dept. to
 make 12"x6" Tap)
 Valve Box El.=1285.6



- ① = New 1" Service Lines are to be installed from the existing 12" Main to the New Coppersettlers, Meter Boxes and Lids being installed behind the new curb line.
- ② = New Meter Boxes, Lids and Coppersettlers are to be connected to new 2" PVC Header and Consumers Service Lines.

BM #4 "LI" cut on the NW cor. of Conc. Sign Base @ SE cor. 27th. St. So. & Seneca. Sta. 43+83.36 Elev.=1286.78

LEGEND
 PAVEMENT, DRIVEWAY AND/OR SIDEWALK REMOVAL.

UTILITY OWNERS
 G - Kansas Gas Service (316)383-8600
 W - City of Wichita Water & Sewer Department (316)268-4940
 T - Southwestern Bell Telephone Co. (800)264-8464, press ## for assistance
 E - Kansas Gas and Electric (316)383-8600
 CATV - Cox Communications (316)262-4270
 SS - City of Wichita Water & Sewer Department (316)268-4940
 SWS - City of Wichita Stormwater Utility (316)268-4071

KANSAS DEPARTMENT OF TRANSPORTATION

**SOUTH SENECA STREET
 43+50 TO 48+50**

PROJECT NO. 472-83084 SEDGWICK CO.

MID-KANSAS ENGINEERING CONSULTANTS, INC.
 WICHITA, KANSAS

DESIGNED BY: DCH	CHECKED BY: DCH
DRAWN BY: WNJ	DATE: MAY 1, 2000 SHEET 7 OF 58

H:\CIVIL\SENECA\94005-2\PAV\94005.DWG Mon May 01 15:42:54 2000