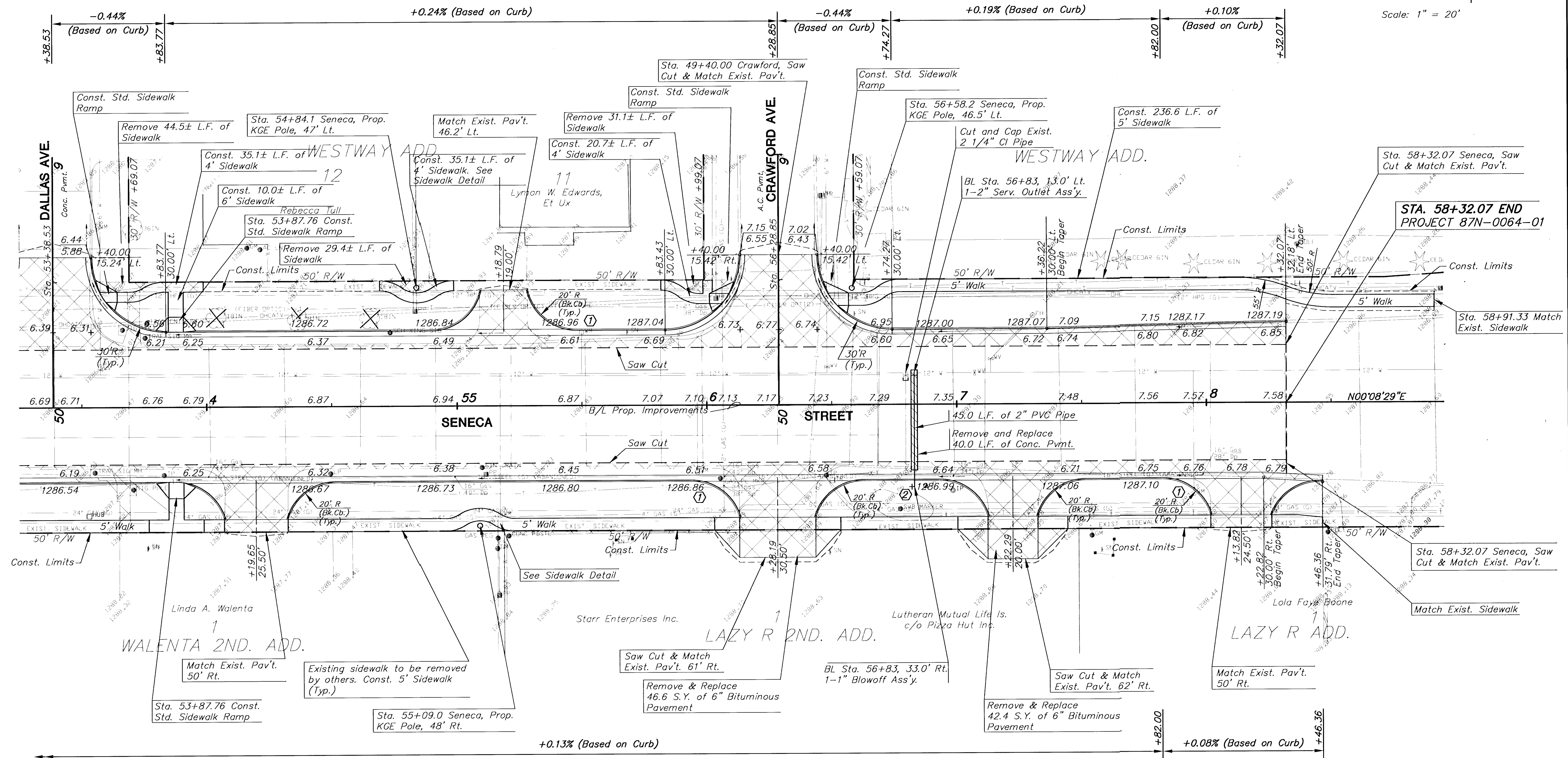
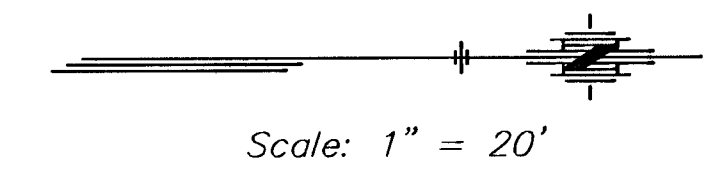


FHWA REG NO.	STATE	PROJECT NO.	YEAR	SHEET NO.	SHEETS
7	KANSAS	472-83084	2000	9	58

P.I. STA. 70+84.68
 S.E. Cor. Sec. 31, T27S, R1E
 1. Found Pipe in Thimble @ Seneca & Pawnee 68.3' N.E.
 2. SE Cor. Conc. Signal Pole Base 68.7' S.E.
 3. NE Cor. Conc. Signal Pole Base 68.7' S.E.
 4. NE Cor. Conc. Signal Pole Base 69.1' S.W.
 5. SE Cor. Conc. Signal Pole Base 67.1' N.W.



① = New 1" Service Lines are to be installed from the existing 12" Main to the New Coppersettors, Meter Boxes and Lids being installed behind the new curb line.
 ② = New Meter Boxes, Lids and Coppersettors are to be connected to new 2" PVC Header and Consumers Service Lines.

LEGEND
 PAVEMENT, DRIVEWAY AND/OR SIDEWALK REMOVAL.
UTILITY OWNERS
 G - Kansas Gas Service (316)383-8600
 W - City of Wichita Water & Sewer Department (316)268-4940
 T - Southwestern Bell Telephone Co. (800)246-8464, press ## for assistance
 E - Kansas Gas and Electric (316)383-8600
 CATV - Cox Communications (316)262-4270
 SS - City of Wichita Water & Sewer Department (316)268-4940
 SWS - City of Wichita Stormwater Utility (316)268-4071

KANSAS DEPARTMENT OF TRANSPORTATION
SOUTH SENECA STREET
 53+50 TO 58+31.38
 PROJECT NO. 472-83084 SEDGWICK CO.
MID-KANSAS ENGINEERING CONSULTANTS, INC.
 WICHITA, KANSAS
 DESIGNED BY: DGH CHECKED BY: DGH
 DRAWN BY: WNJ DATE: MAY 1, 2000 SHEET 9 OF 58

H:\CIVIL\SENECA\94005-2\PAV\94005E.DWG Mon May 01 15:44:56 2000

94005E7