

**SOUTH SENECA  
STORM SEWER PLAN  
LINE 1 & LINE 2**

Sta. 0+87.76, Line 1=  
Sta. 28+27.73, Seneca Construct  
Curb Inlet (Type I), 32.00' Lt.  
L=16'4", W=5'4"  
Inlet Top=1282.02  
Install 24" x 48.60' Storm Swr. (RCP)(S)  
@ 0.40%  
FI Out=1277.46 (24" RCP-S)

Remove Existing 15" RCP and  
Existing Storm Sewer Structures.

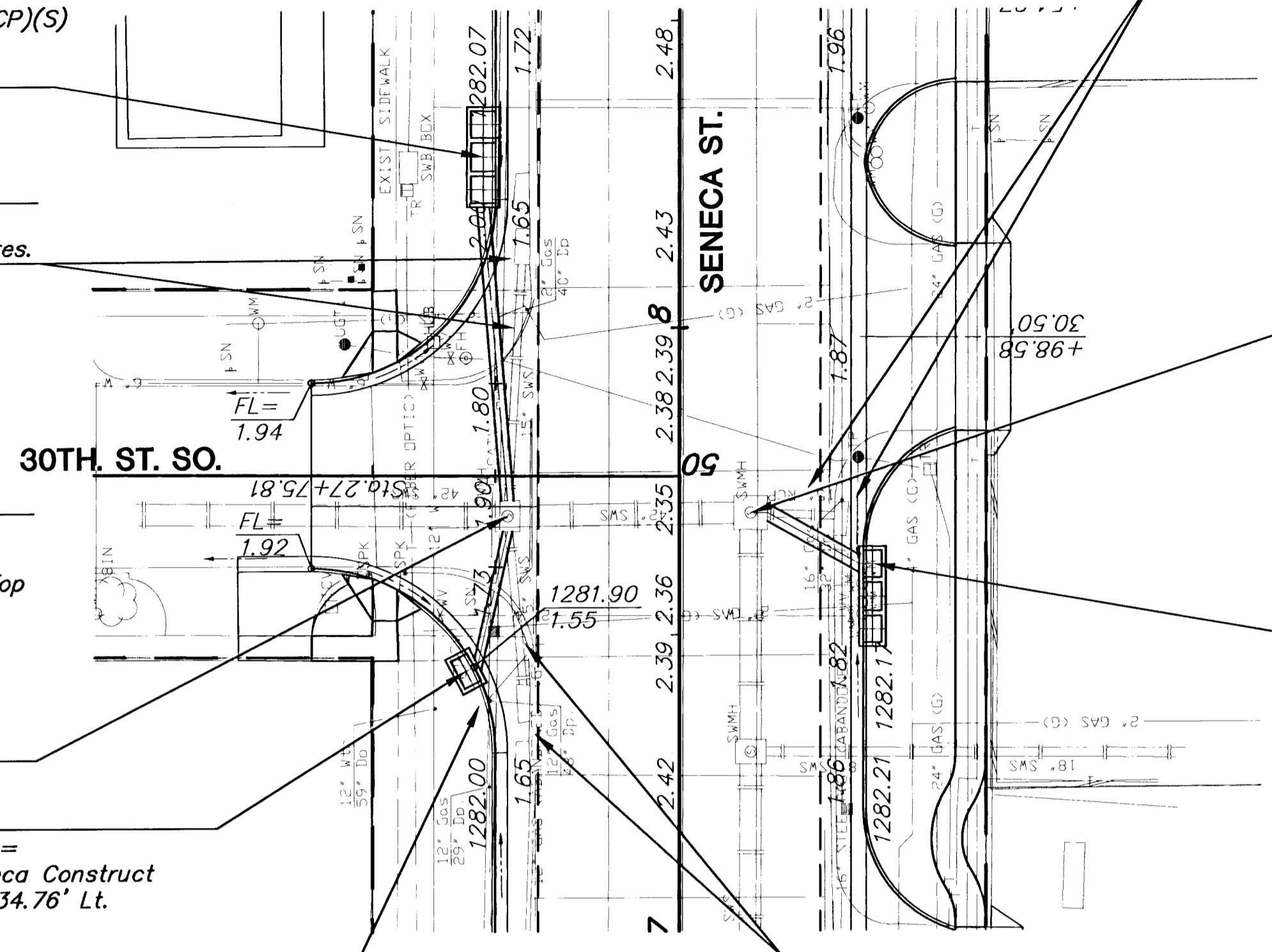
Sta. 0+29.17, Line 1=  
Sta. 27+69.30, Seneca Exist.  
Manhole, 28.00' Lt. Adjust Manhole Top  
Exist. MH Top=1281.87  
Prop. MH Top=1281.89  
FI In=1277.27 (24" RCP-N)  
FI In=1277.77 (18" RCP-S)  
FI In=1275.77 (Exist. 42" RCP-W)  
FI Out=1275.77 (Exist. 42" RCP-E)

Sta. 0+02.16, Line 1=  
Sta. 27+43.99, Seneca Construct  
Curb Inlet (Type I), 34.76' Lt.  
L=6'4", W=4'4"  
Inlet Top=1281.90  
Install 18" x 27.01' Storm Swr. (RCP)(N)  
@ 0.50%  
FI Out=1277.91 (18" RCP-N)

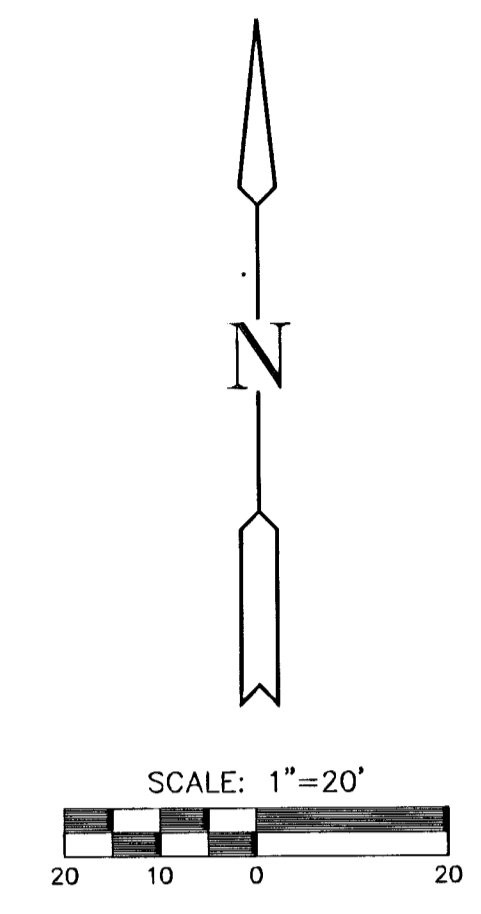
Remove Existing 15" RCP and  
Existing Storm Sewer Structures.

Sta. 0+00.00, Line 1=  
Sta. 27+69.94, Seneca Exist.  
Manhole, 11.62' Rt. Adjust Manhole Top  
Exist. MH Top=1282.02  
Prop. MH Top=1282.14  
FI In=1275.86 (30" RCP-E)  
FI In=1275.78 (Exist. 42" RCP-W)  
FI In=1275.86 (Exist. 42" RCP-S)

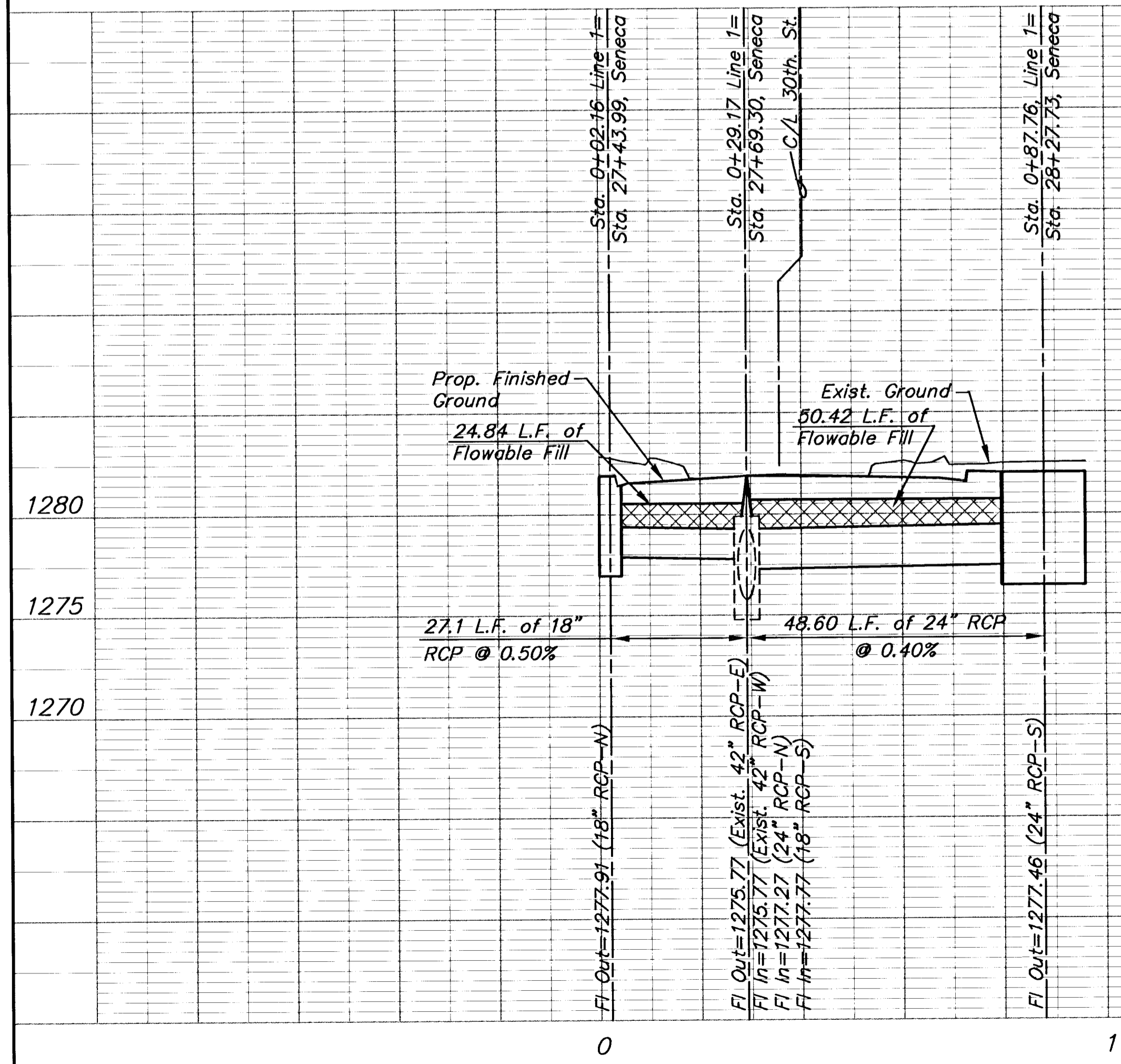
Sta. 0+22.01, Line 2=  
Sta. 27+61.67, Seneca Construct  
Curb Inlet (Type I), 31.50' Rt.  
L=16'4", W=4'4"  
Inlet Top=1282.16  
Install 30" x 17.77' Storm Swr. (RCP)(W)  
@ 0.17%  
FI Out=1275.89 (30" RCP-W)



**PLAN**  
SCALE: 1" = 20'



**PROFILE - LINE 1**  
HORIZONTAL SCALE: 1" = 20'  
VERTICAL SCALE: 1" = 5'



**PROFILE - LINE 2**  
HORIZONTAL SCALE: 1" = 20'  
VERTICAL SCALE: 1" = 5'

