

# BANUELOS ADDITION TO SEDGWICK COUNTY, KANSAS

NE COR. S1/2, NE1/4, SW1/4, SE1/4, SEC. 32, T66S, R1E

321.34 N0°06'25"W

321.34 N0°06'25"W

321.34 N0°20'26"W

SE COR. S1/2, SW1/4, SE1/4, SEC. 32, T66S, R1E

364.02 N89°02'52"W

192.50 N89°02'52"W  
162.50

160.33 N89°02'52"W

158.73 N89°56'00"W

157.22 N89°56'00"W

163.01 S89°56'00"E

Street dedication on Film 372, Page 738

385.68 S89°50'36"E

155.50 S89°56'00"E

185.72 S89°50'36"E

30TH ST. NO.

270.23 S89°56'00"E

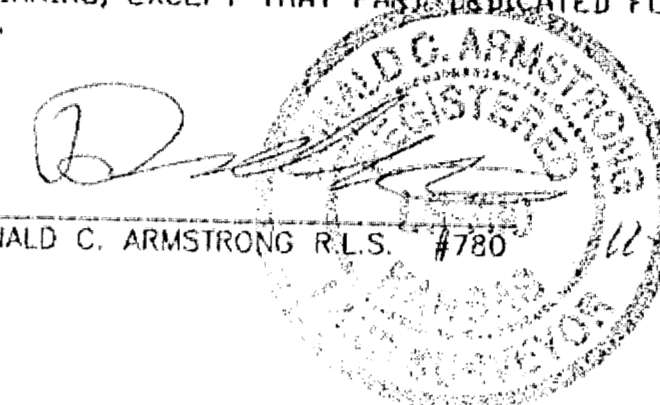
SCALE 1"=40'

- - set 3/8" rebar & "Armstrong" cap
- - Found 1/2" bar
- ⊙ - Found Thimble
- - Found 1/2" iron pipe
- P - Plat distance
- R - Record distance



State of Kansas )  
County of Sedgwick ) ss

I, Donald C. Armstrong, a Registered Land Surveyor in said state and county do hereby certify that on this 14<sup>th</sup> day of Nov, 2004, I have surveyed and platted "BANUELOS ADDITION" to Sedgwick County, Kansas, into lots and a block the same being the same described as follows:  
THAT PART OF THE EAST 381 FEET OF THE SOUTH HALF (S1/2) OF THE NORTHEAST QUARTER (NE1/4) OF THE SOUTHWEST QUARTER (SW1/4) OF THE SOUTHEAST QUARTER (SE1/4) OF SECTION 32, TOWNSHIP 26 SOUTH, RANGE 1 EAST OF THE SIXTH P.M., SEDGWICK COUNTY, KANSAS, DESCRIBED AS BEGINNING AT THE SOUTHEAST CORNER THEREOF; THENCE N0°06'25"W ALONG THE EAST LINE OF SAID SOUTH HALF, 321.34 FEET; TO THE NORTHEAST CORNER OF SAID SOUTH HALF; THENCE N89°02'52"W, 192.50 FEET; THENCE S89°50'36"E ALONG SAID SOUTH HALF, 185.72 FEET TO THE POINT OF BEGINNING, EXCEPT THAT PART DESIGNATED FOR STREET ON FILM 372, PAGE 738.



DONALD C. ARMSTRONG R.L.S. #780 11/24/04

Know all men by these presents that I, the undersigned, have caused the land described in the surveyors certificate to be platted into Lots and a block to be known as "BANUELOS ADDITION TO WICHITA, SEDGWICK COUNTY, KANSAS". The streets are hereby dedicated to and for the use of the public. The utility easements as indicated are hereby granted for the construction and maintenance of all public utilities. A drainage plan has been developed for this plat and all drainage easements, right-of-ways, or reserves shall remain at established grades or as modified with approval of the applicable city or county Engineer, and unobstructed to allow for the conveyance of stormwater. The contingent setback on Lot 2 is contingent as long as the structure remains on Lot 2. When the structure on Lot 2 is removed, the setback shall be the same as Lots 1 and 3.

OWNERS:  
Francisco C. Banuelos 12-13-04  
Francisco C. Banuelos Date

State of Kansas )  
County of Sedgwick ) ss

Be it remembered that on this 13<sup>th</sup> day of December, 2004, before me, a Notary Public in aforesaid state and county, came Francisco C. Banuelos, to me personally to be the same person who executed the foregoing instrument of writing and duly acknowledged the execution of same. In testimony whereof I have hereunto set my hand and affixed my notarial seal the day and year written.

Donna S. Newman Notary Public  
Donna S. Newman  
My commission expires: February 23, 2007  
DONNA S. NEWMAN  
Notary Public - State of Kansas  
My Appt. Expires 2-23-2007

We, Security Savings Bank, FSB holders of a mortgage on the above described property, do hereby consent to the plat of Banuelos Addition to Wichita, Sedgwick County, Kansas.

Brian L. Chamberlin Senior Vice-President  
Brian L. Chamberlin

State of Kansas )  
County of Sedgwick ) ss

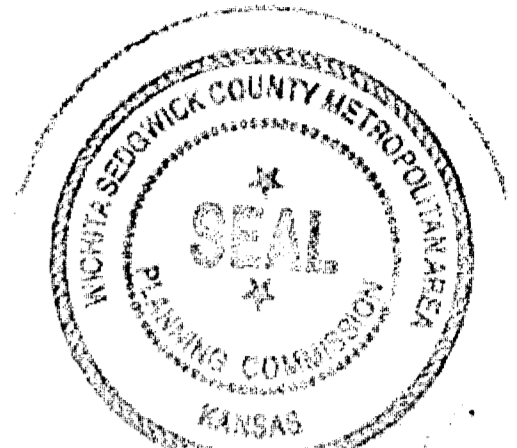
The foregoing instrument was acknowledged before me this 14<sup>th</sup> day of December, 2004, by Matthew Collin, Brian L. Chamberlin Senior Vice-President, on behalf of Security Savings Bank, FSB.

Kristen M. Wheelchel Notary Public  
Kristen M. Wheelchel  
My commission expires: 5-25-08

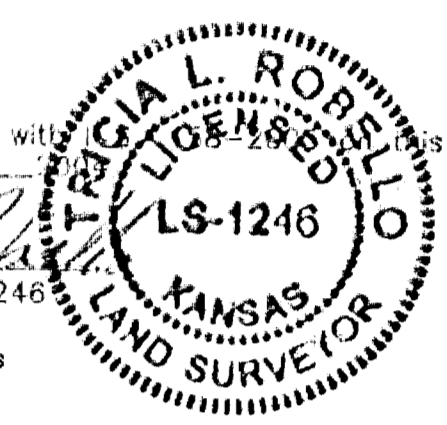
KRISTEN M. WHELCEL  
Notary Public - State of Kansas  
My Appt. Expires 5-25-08

This plat has been submitted to and approved by the Wichita-Sedgwick County Metropolitan Area Planning Commission, Wichita, Kansas. Dated this 11<sup>th</sup> day of Sept, 2004.

John L. Sibley Chairman  
John L. Sibley Secretary



Reviewed in accordance with  
of December, 2004  
Tricia L. Robello  
Tricia L. Robello, LS #1246  
Deputy County Surveyor  
Sedgwick County, Kansas



This plat approved and all dedications shown hereon accepted by the City Council of the City of Wichita, Kansas, this 8<sup>th</sup> day of December, 2004.

Carlos Mayans Mayor  
Karen Sublett Clerk

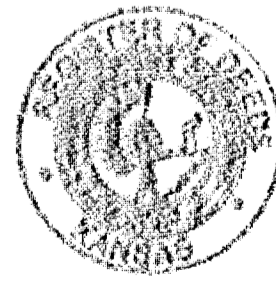
Entered or transferred record the 1<sup>st</sup> day of Sept, 2004.  
Don Braco County Clerk



State of Kansas )  
County of Sedgwick )

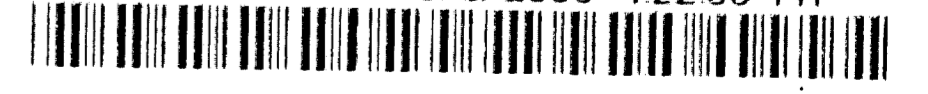
This is to certify that this plat has been filed for record in the office of the Register of Deeds this 1<sup>st</sup> day of September, 2004, at 4:24 P.M., and is duly recorded.

Bill Meek Register of Deeds  
Tonya Buckingham Deputy



Sedgwick County  
Register of Deeds - Bill Meek  
DOC # FLM-PG: 28710368  
Record # 1250668  
Pages Recorded: 1  
Recording Fee: \$20.00

Cashier Initials: DM  
Date Recorded: 9/1/2005 4:22:05 PM



SHEET 4 OF 4

ARMSTRONG  
LAND SURVEY, P.A.  
1601 E. HARRY  
WICHITA, KANSAS 67211  
PH - (316) 263-0082  
Fax - (316) 263-0092

AB-BUILT 4-11-07 HOF WICED