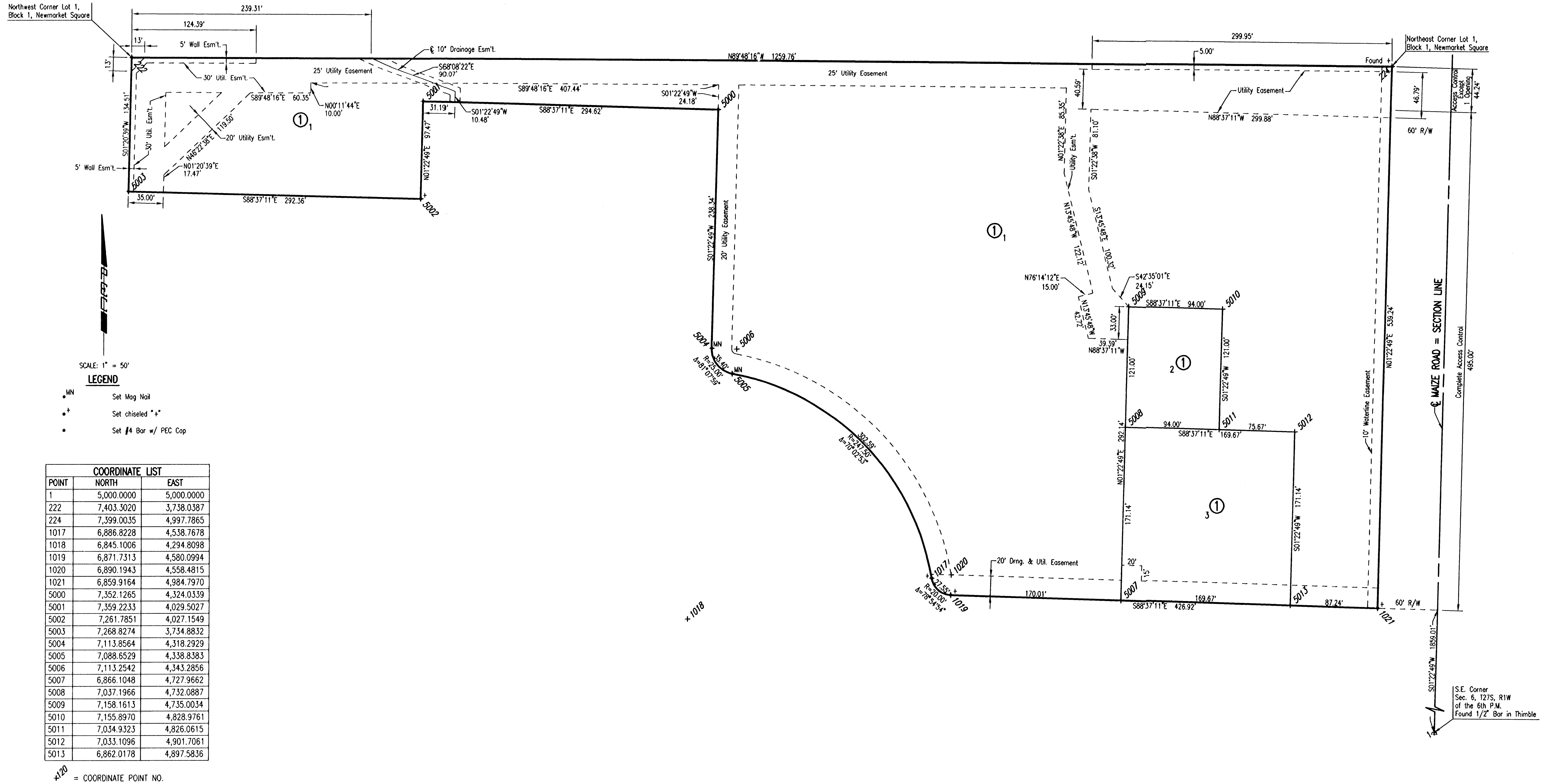


NEWMARKET SQUARE PHASE II

AN ADDITION TO WICHITA, SEDGWICK COUNTY, KANSAS



SCALE: 1" = 50'

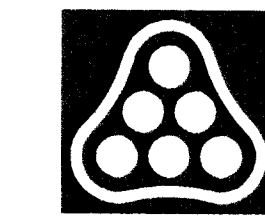
LEGEND

- MN Set Mag Nail
- + Set chiseled "+"
- Set #4 Bar w/ PEC Cop

COORDINATE LIST		
POINT	NORTH	EAST
1	5,000.0000	5,000.0000
222	7,403.3020	3,738.0387
224	7,399.0035	4,997.7865
1017	6,886.8228	4,538.7678
1018	6,845.1006	4,294.8098
1019	6,871.7313	4,580.0994
1020	6,890.1943	4,558.4815
1021	6,859.9164	4,984.7970
5000	7,352.1265	4,324.0339
5001	7,359.2233	4,029.5027
5002	7,261.7851	4,027.1549
5003	7,268.8274	3,734.8832
5004	7,113.8564	4,318.2929
5005	7,088.6529	4,338.8383
5006	7,113.2542	4,343.2856
5007	6,866.1048	4,727.9662
5008	7,037.1966	4,732.0887
5009	7,158.1613	4,735.0034
5010	7,155.8970	4,828.9761
5011	7,034.9323	4,826.0615
5012	7,033.1096	4,901.7061
5013	6,862.0178	4,897.5836

*120 = COORDINATE POINT NO.

Saved: 02-16-2007 4:55:00 PM by RFT
 Plot Scale: 1"=50' 03-09-2007 1:38:13 PM by BET
 C:\2007\07046\BUDG 15A\Private Plans\SWIS\07046-SWS-C-BUDG15-NewMarketPlat



No.	Revision	By	Date
NEWMARKET SQUARE PHASE 2 (BUILDING 15A) STORM WATER SEWER IMPROVEMENTS NEWMARKET SQUARE PHASE II (PLAT) JAMES L. ARMOUR, P.E. - CITY ENGINEER CITY OF WICHITA PRIVATE PROJECT NO. 1746 PPS (607861) Professional Engineering Consultants, P.A. 303 S. TOPEKA - WICHITA, KANSAS 67202 316-262-2691 • FAX 316-262-3003			
Designed by	RRY	Job No.	35-07046-5054
Drawn by		Date	December 2006