

**THE WICHITA AIRPORT AUTHORITY  
WICHITA, KANSAS**

# COLONEL JAMES JABARA AIRPORT

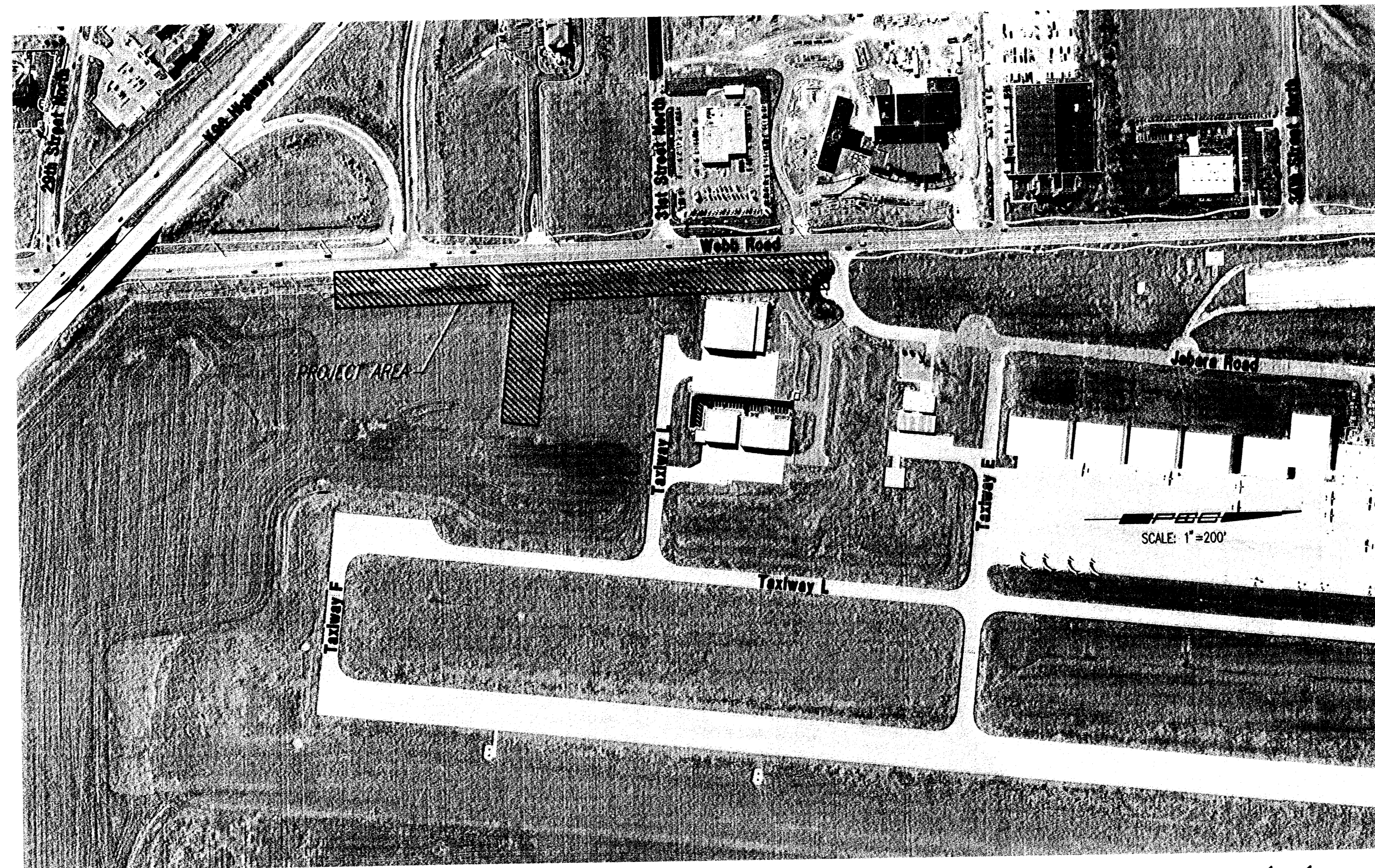
PLANS FOR

## SOUTHWEST AREA SITE DEVELOPMENT UTILITY IMPROVEMENTS

**SANITARY SEWER - CITY OF WICHITA PRIVATE PROJECT NO. 1674PPS (607861)**

INDEX OF SHEETS

|                     |   |
|---------------------|---|
| Sheet No. CS1.0     | Sanitary Sewer Title Sheet                              |
| Sheet No. CS1.1     | Sanitary Sewer Key Map and General Notes                |
| Sheet No. CS1.2     | 4" Force Main Plan/Profile                              |
| Sheet No. CS1.3-1.4 | Sanitary Sewer Plan/Profile                             |
| Sheet No. CS1.5     | Lift Station and Mechanical Details                     |
| Sheet No. CS1.6     | Standard Type "P" Manhole Details                       |
| Sheet No. CS1.7     | Manhole Frame & Cover Details                           |
| Sheet No. CS1.8     | Vertical Riser Details                                  |
| Sheet No. E1.1      | Electrical Symbols, General Notes, Schedules, & Details |
| Sheet No. E1.2      | Electrical Details                                      |
| Sheet No. E1.3      | Electrical Site Plan                                    |
| Sheet No. S1.1      | Concrete Wall Details                                   |
| Sheet No. CF1.0     | Fencing Plan  |
| Sheet No. CF1.1     | Fence Details   |
| Sheet No. CS0-5.3   | Soil Erosion BMP Details                                |



*Dondlinger & Sons Construction Co, Inc - Contractor  
Rogers, P.E.C. - Inspector  
Released 5/29/07  
As-Built  
Risers & Stubs  
.pdf by JDL 6/19/07*

APPROVED AS NOTED  
By CITY ENGINEER OF WICHITA

Sanitary Sewers VRH 7/28/06  
Storm Sewers \_\_\_\_\_  
Driveway Approaches \_\_\_\_\_  
Paving \_\_\_\_\_

NOTE TO CONTRACTOR

INSPECTION AND TESTING FOR THIS PROJECT IS TO BE PROVIDED BY A LICENSED CONSULTING ENGINEERING FIRM CONTRACTED BY THE OWNER/DEVELOPER. SAID INSPECTION TO BE IN ACCORDANCE WITH THE CITY OF WICHITA STANDARD CONSTRUCTION ENGINEERING PRACTICES AND CERTIFIED BY A LICENSED PROFESSIONAL ENGINEER. NO WORK SHALL BE PERFORMED IN DEDICATED EASEMENTS OR PUBLIC RIGHT-OF-WAY BY THE CONTRACTOR UNTIL SUCH INSPECTION IS ARRANGED FOR AND REQUIRED BONDS HAVE BEEN SUBMITTED TO AND APPROVED BY THE CITY NOR SHALL ANY WORK BE COMMENCED IN DEDICATED EASEMENTS OR PUBLIC RIGHT-OF-WAY WITHOUT WRITTEN AUTHORIZATION BY THE CITY ENGINEER. IMPROVEMENTS PERFORMED UNDER THIS PROJECT SHALL NOT BE ACCEPTED BY THE CITY UNTIL ALL APPLICABLE DOCUMENTATION HAS BEEN SUBMITTED TO THE CITY ENGINEER. THIS MAY INCLUDE: RECORD DRAWINGS, INSPECTION LOGS, TEST DOCUMENTATION, TV TAPES, AND A CERTIFICATE OF COMPLETION. THE ABOVE SHALL BE PERFORMED BY THE CONSULTING FIRM CONTRACTED TO INSPECT THIS PROJECT.

**AIRPORT REFERENCE CODE (ARC) D - IX**

**APPROVED**  
**THE WICHITA AIRPORT AUTHORITY**

DIRECTOR OF AIRPORTS

AIRPORT ENGINEERING AND  
PLANNING MANAGER



PLANS PREPARED BY  
**Professional Engineering Consultants, P.A.**  
303 S. TOPEKA • WICHITA, KANSAS 67202  
316-262-2691 • FAX 316-262-3003

*David E. ...*  
**RECORD DRAWING**

**JULY 2006**

saved 07-28-2006 9:19:54 AM by RBT  
Plot Scale 1:200 07-28-2006 10:19:55 AM by RBT  
C:\A051\05471\SS-M\FPS\05471-000-C-31623.dwg