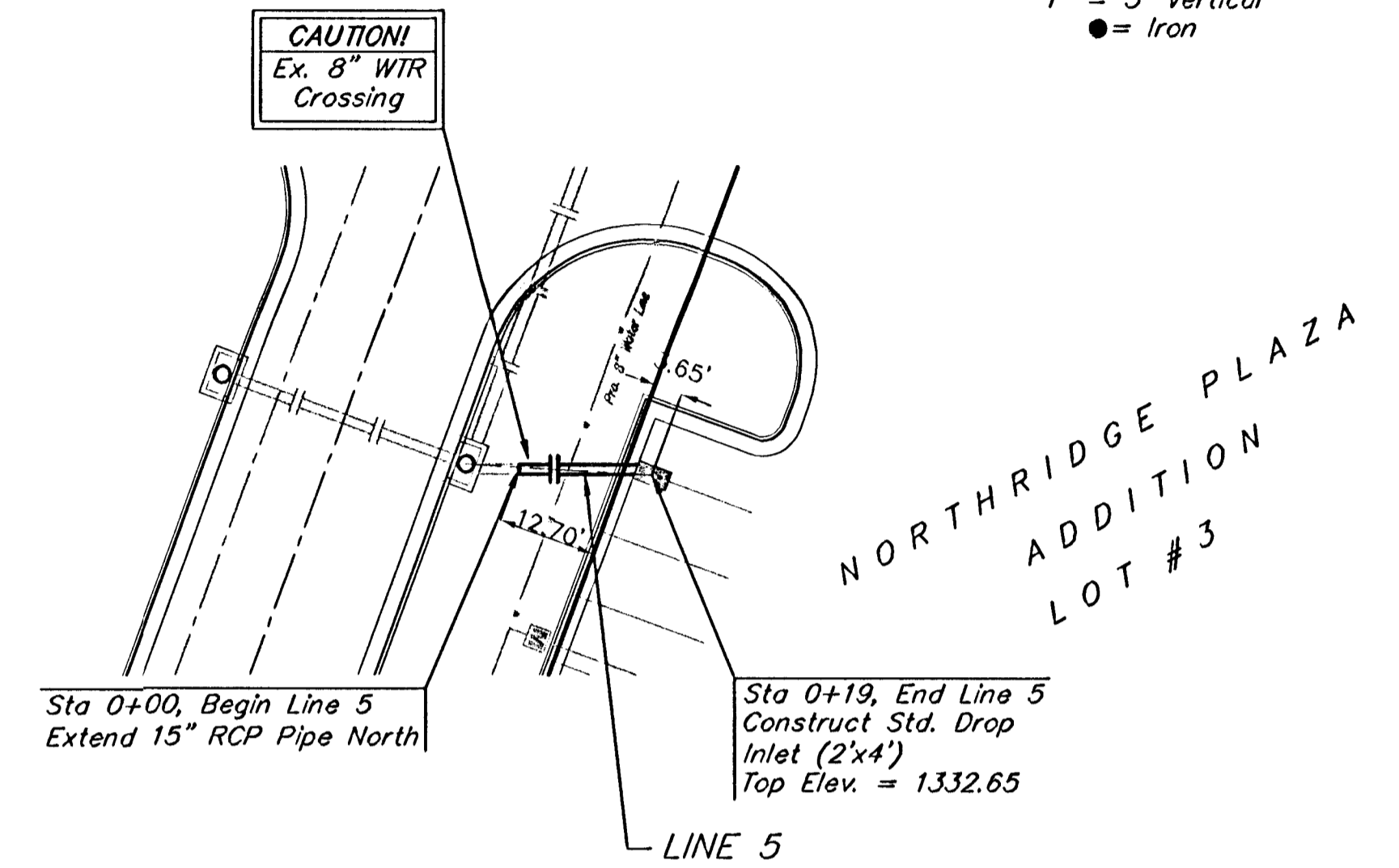
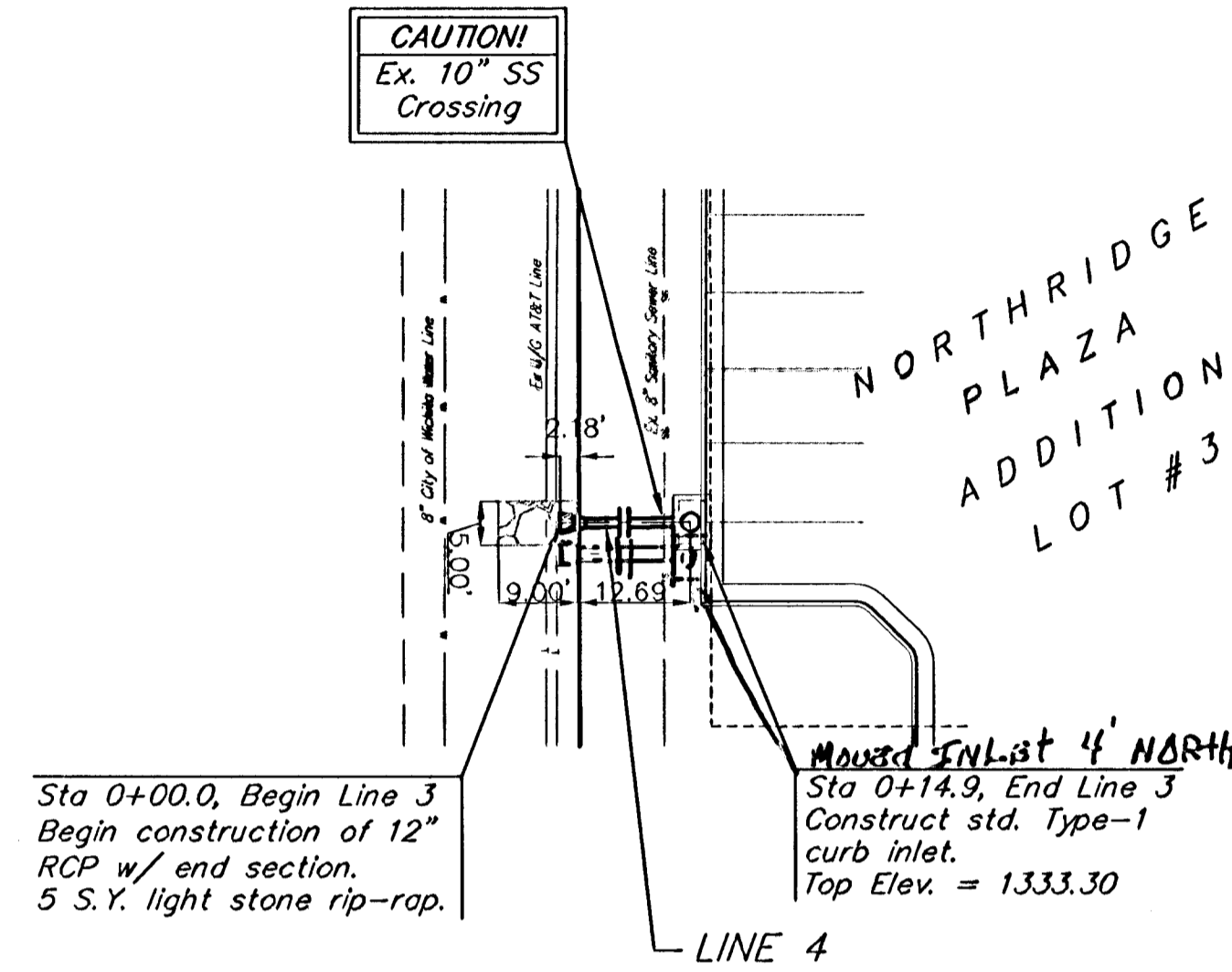
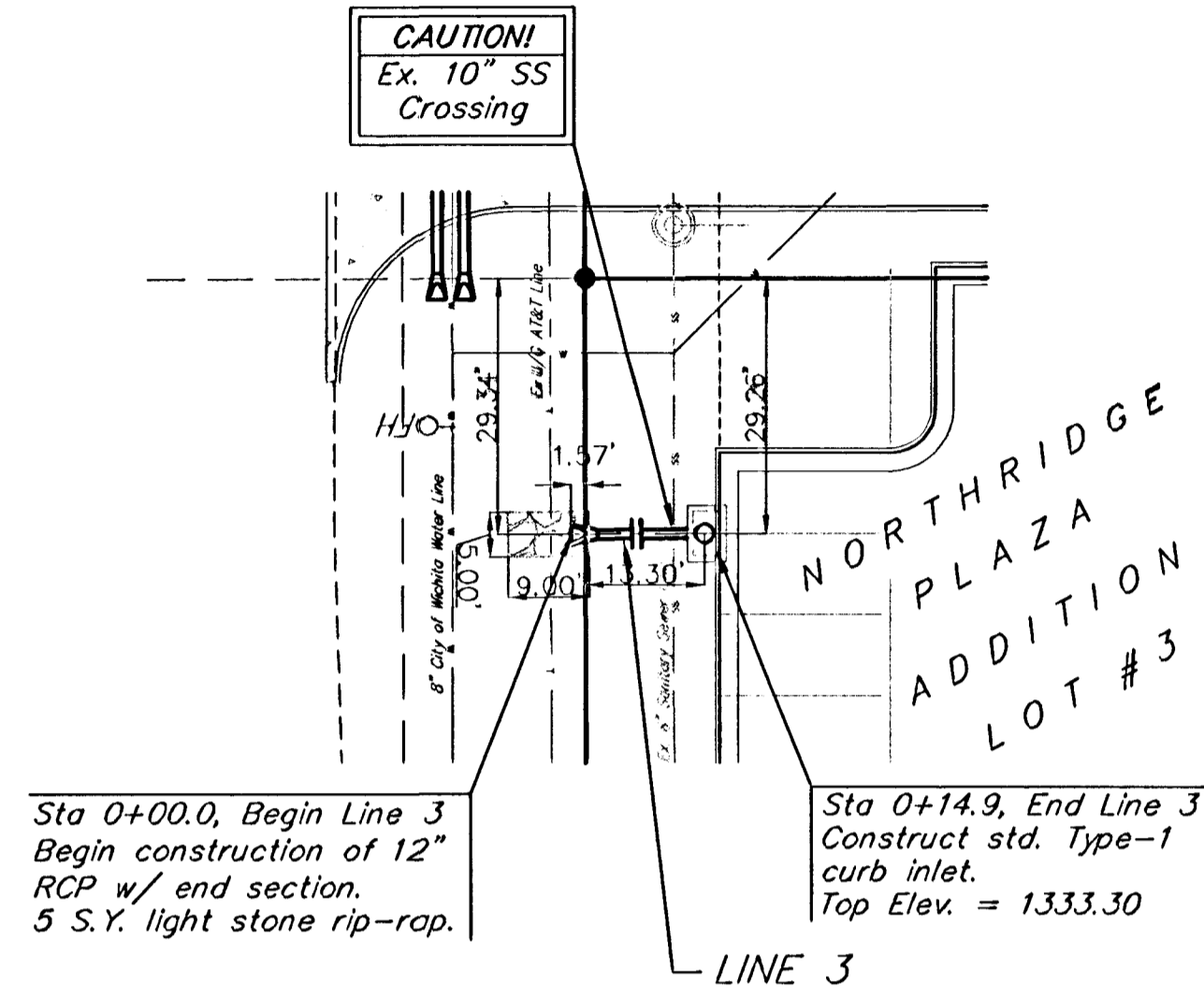
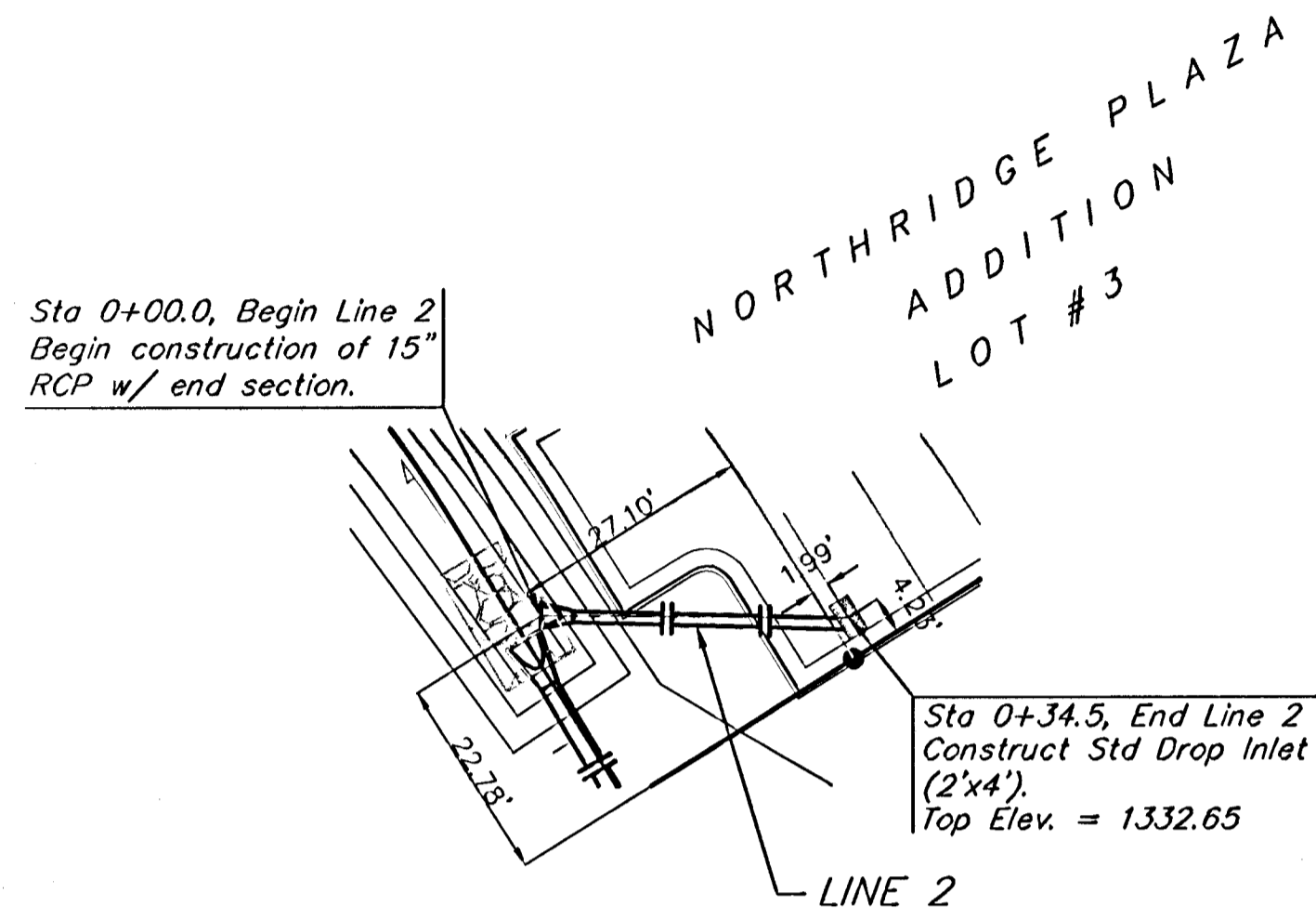
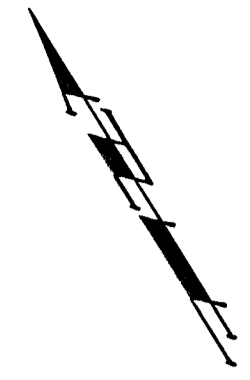
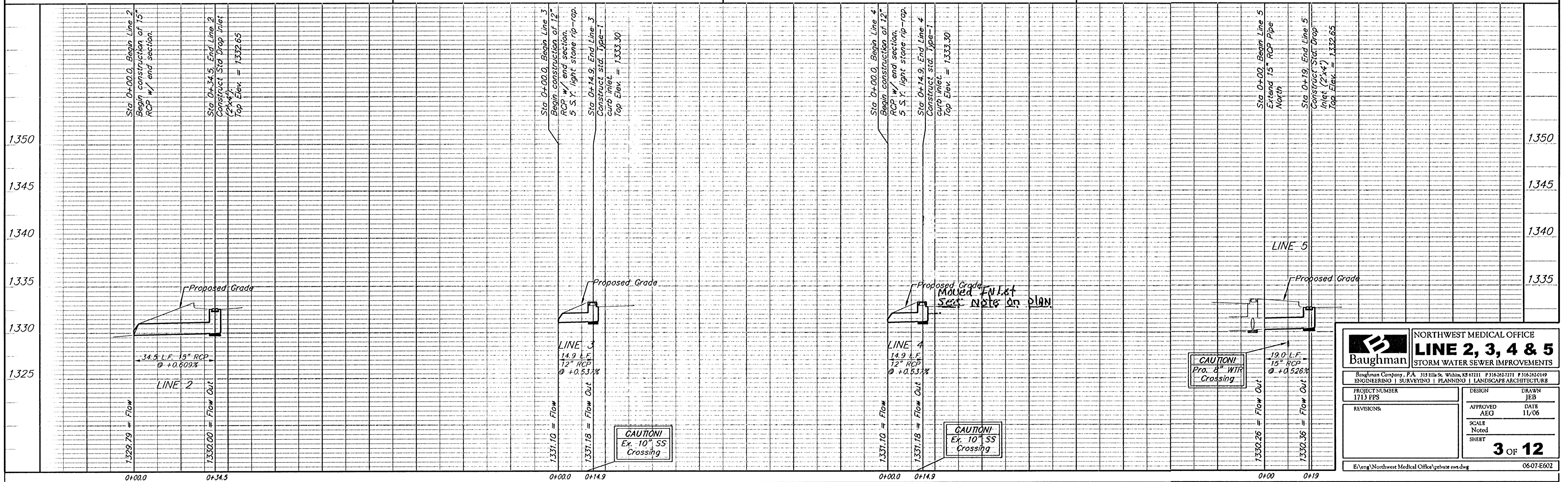


**BENCHMARK:**  
 Railroad Spike in East Face of  
 Power Pole, East of the NE Corner  
 of Lot 3, Northridge Plaza Addition  
 on East Side of Ridge Road  
 Elev. = 1335.05 M.S.L.



Scale: 1" = 20' Horizontal  
 1" = 5' Vertical  
 ● = Iron



		<b>NORTHWEST MEDICAL OFFICE</b> <b>LINE 2, 3, 4 &amp; 5</b> <b>STORM WATER SEWER IMPROVEMENTS</b>	
		<small>Baughman Company, P.A. 315 E. 11th St. Wichita, KS 67211 P 316-262-7271 F 316-262-6149        ENGINEERING   SURVEYING   PLANNING   LANDSCAPE ARCHITECTURE</small>	
PROJECT NUMBER 1713 PPS	DESIGN JEB	APPROVED AEO	DATE 11/06
REVISIONS:	SCALE Noted	<b>3 OF 12</b>	
<small>E:\Eng\Northwest Medical Office\private sww.dwg</small>		<small>06-07-E602</small>	

NORTHWEST MEDICAL OFFICE AS-BUILTS 5-7-07  
 T.H./CED