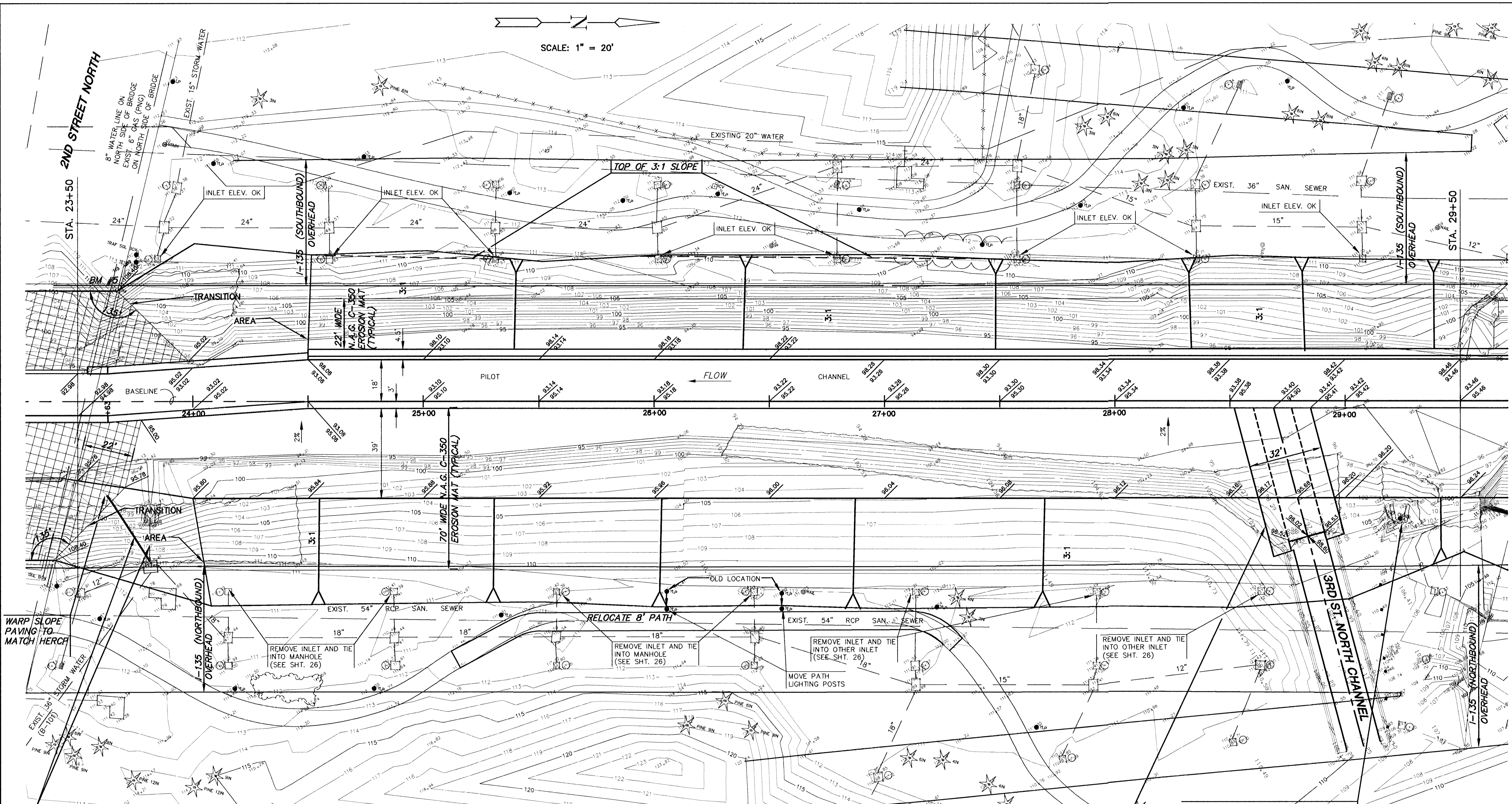


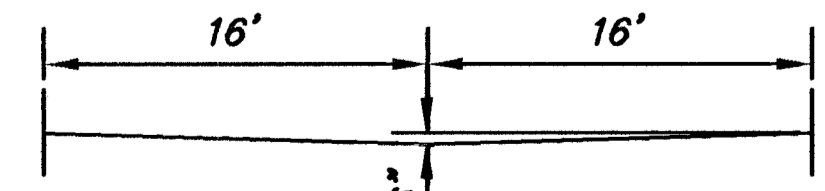
SCALE: 1" = 20'



REMOVE 18 L.F. OF 36" PIPE FROM OUTLET TO MANHOLE AND INSTALL 34 L.F. OF 36" RCP LOWER M.H. TOP TO 108.0 W/END SECTION & CONC. TOE-WALL, W=2', D=4', L=8' FL. OUTLET = 95.78 FL. MANHOLE = EXIST. (~96.06)

NOTE: ALL AREAS DISTURBED, BEYOND AREA COVERED BY EROSION MAT, SHALL BE FERTILIZED, SEEDED AND MULCHED.

ARMORFLEX CONCRETE BLOCKS (OPEN - CLASS 60) UNDER LAY W/MIRAFI FW 40/30A GEOTEXTILE 212.1 S.Y.



ADD CONC. TOEWALL UNDER END OF EXIST. CONC. CHANNEL SLAB (MIN. 1 FT. THICK x 3 FT. DEEP).

REMOVE EXIST. ABANDONED HEADWALL



AREA "K" PART 2 - PHASE 1  
PROJECT NAME  
WICHITA DRAINAGE CANAL PLAN  
SHEET TITLE

MID-KANSAS ENGINEERING CONSULTANTS, INC. 411 N. WEBB ROAD WICHITA, KS. 67206 316-684-9600  
JNJ DESIGN BY. MLW DRAWN BY. JNJ CHECKED BY.  
MAY 1999 DATE 94011 JOB NO. 9/64 SHEET/OF

6: CIVIL AREA K 94011 PLANS 94011.DWG Tue May 25 08:37:45 1999