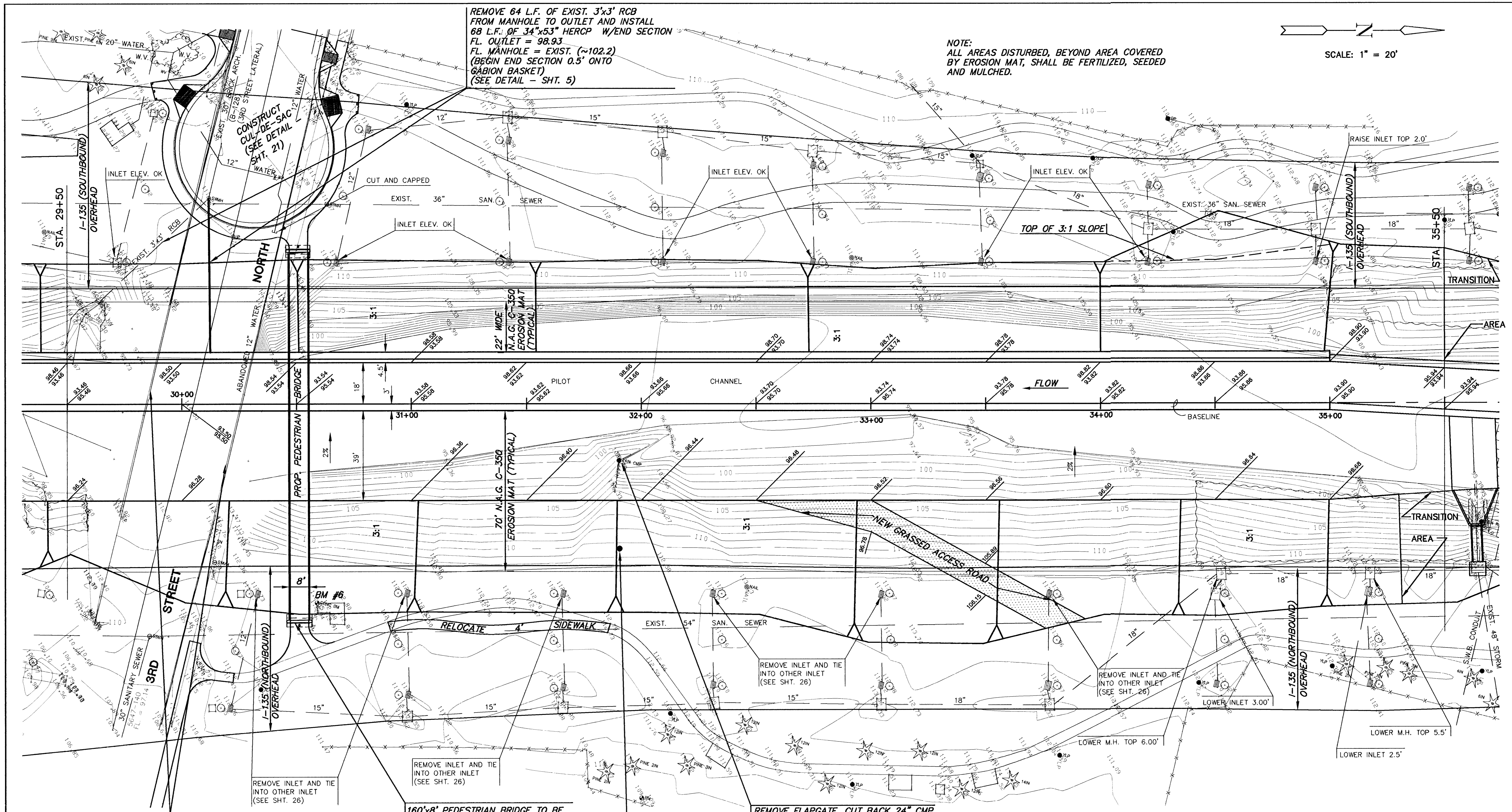


SCALE: 1" = 20'

REMOVE 64 L.F. OF EXIST. 3'x3' RCB FROM MANHOLE TO OUTLET AND INSTALL 68 L.F. OF 34"x53" HERCP W/END SECTION FL. OUTLET = 98.93 FL. MANHOLE = EXIST. (~102.2) (BEGIN END SECTION 0.5' ONTO GABION BASKET) (SEE DETAIL - SHT. 5)

NOTE: ALL AREAS DISTURBED, BEYOND AREA COVERED BY EROSION MAT, SHALL BE FERTILIZED, SEEDED AND MULCHED.

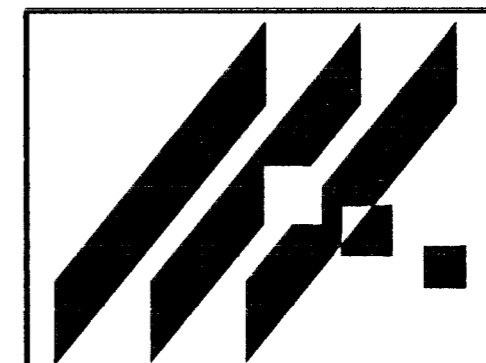


BRIDGE, INCLUDING DECK, PIERS, AND ABUTMENTS TO 1 FT. BELOW GRADING IS REMOVED BY CONTRACTOR.

160'x8' PEDESTRIAN BRIDGE TO BE INSTALLED BEFORE PRESENT 3RD STREET NORTH BRIDGE IS REMOVED (SEE DETAIL - SHT. 22)

APPROXIMATE NEW END LOCATION OF 24" CMP

REMOVE FLAPGATE, CUT BACK 24" CMP TO MATCH PROPOSED SIDE SLOPE W/NEW END SECTION AND W/CONCRETE TOEWALL W=2', D=4', L=6'



MID-KANSAS ENGINEERING CONSULTANTS, INC. 411 N. WEBB ROAD WICHITA, KS. 67206 316-684-9600

AREA "K" PART 2 - PHASE 1 PROJECT NAME WICHITA DRAINAGE CANAL PLAN SHEET TITLE

JNJ DESIGN BY. MLW DRAWN BY. JNJ CHECKED BY. MAY 1999 DATE 94011 JOB NO. 11 / 64 SHEET/OF