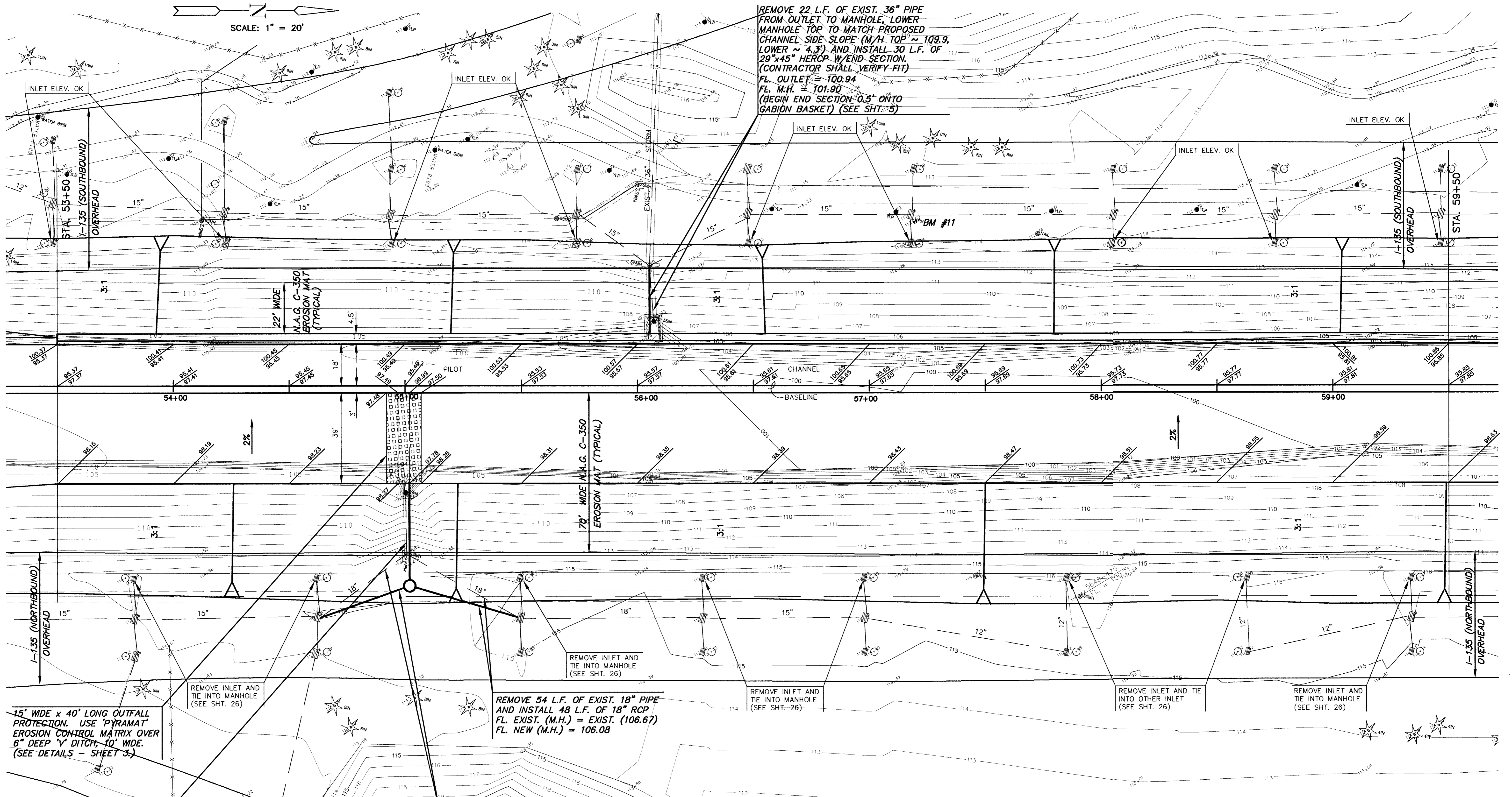


SCALE: 1" = 20'

REMOVE 22 L.F. OF EXIST. 36" PIPE FROM OUTLET TO MANHOLE, LOWER MANHOLE TOP TO MATCH PROPOSED CHANNEL SIDE SLOPE (M/H TOP ~ 109.9, LOWER ~ 4.3) AND INSTALL 30 L.F. OF 29"x45" HERCP W/END SECTION. (CONTRACTOR SHALL VERIFY FIT)
 FL. OUTLET = 100.94
 FL. M.H. = 101.90
 (BEGIN END SECTION 0.5' ONTO GABION BASKET) (SEE SHT. 5)



15' WIDE x 40' LONG OUTFALL PROTECTION. USE PYRAMAT EROSION CONTROL MATRIX OVER 6\"/>

REMOVE INLET AND TIE INTO MANHOLE (SEE SHT. 26)

REMOVE 54 L.F. OF EXIST. 18\"/>

REMOVE INLET AND TIE INTO MANHOLE (SEE SHT. 26)

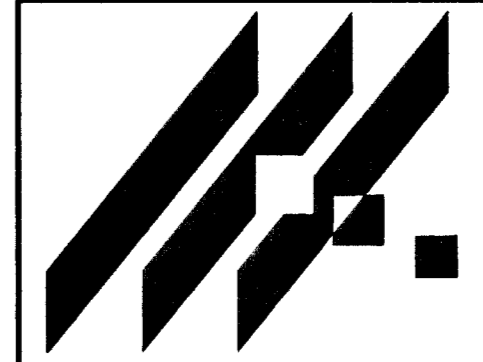
REMOVE INLET AND TIE INTO OTHER INLET (SEE SHT. 26)

REMOVE INLET AND TIE INTO MANHOLE (SEE SHT. 26)

REMOVE 24 L.F. OF EXIST. 24\"/>

REMOVE 44 L.F. OF EXIST. 18\"/>

NOTE:
 ALL AREAS DISTURBED, BEYOND AREA COVERED BY EROSION MAT, SHALL BE FERTILIZED, SEEDED AND MULCHED.



AREA "K" PART 2 - PHASE 1
 PROJECT NAME

WICHITA DRAINAGE CANAL PLAN
 SHEET TITLE

MID-KANSAS ENGINEERING CONSULTANTS, INC.
 411 N. WEBB ROAD
 WICHITA, KS. 67206
 316-684-9600

JNJ DESIGN BY.	MLW DRAWN BY.	JNJ CHECKED BY.
MAY 1999 DATE	94011 JOB NO.	17 / 64 SHEET/OF