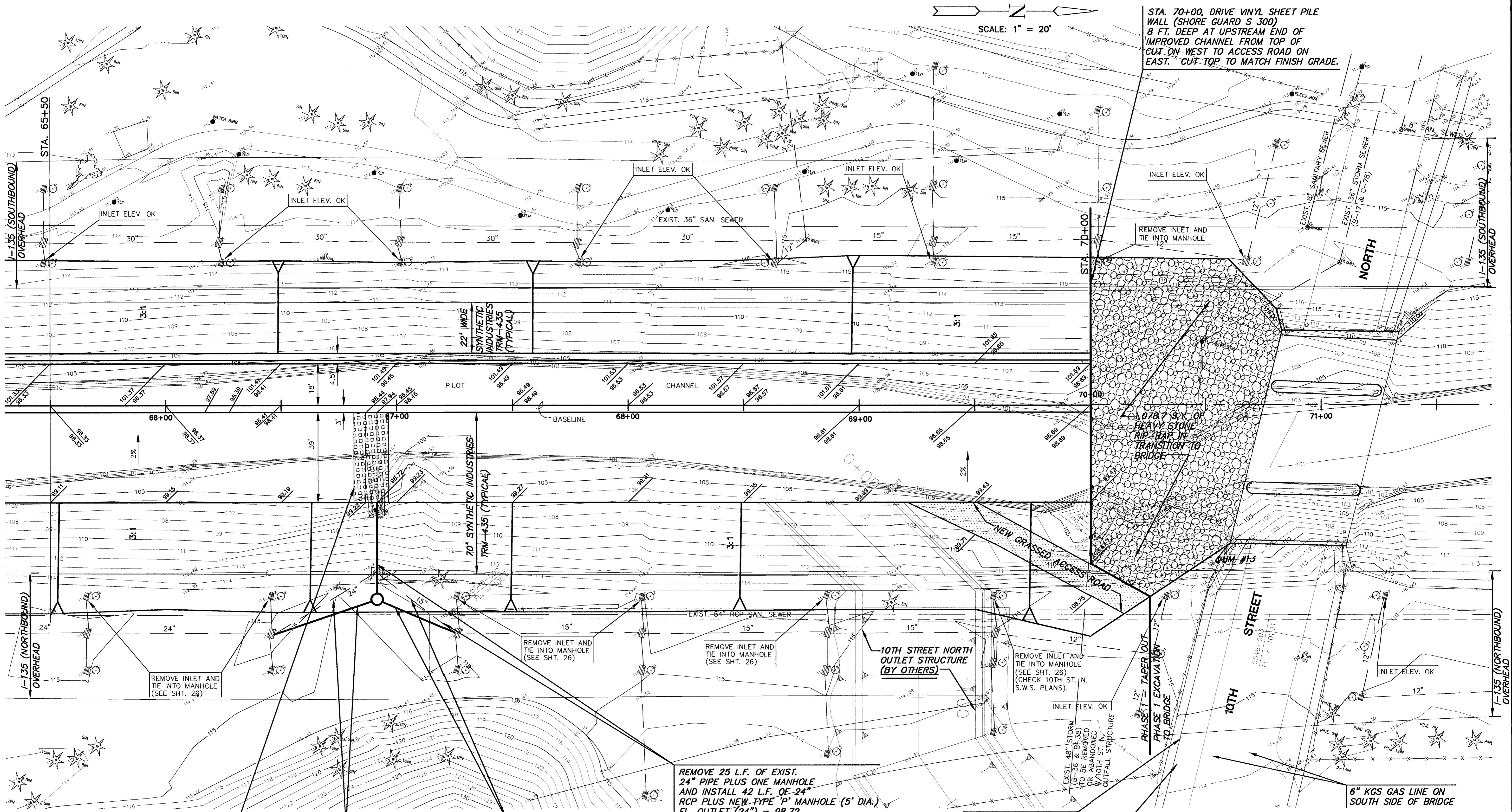


SCALE: 1" = 20'

STA. 70+00, DRIVE VINYL SHEET PILE WALL (SHORE GUARD S 300) 8 FT. DEEP AT UPSTREAM END OF IMPROVED CHANNEL FROM TOP OF CUT ON WEST TO ACCESS ROAD ON EAST. CUT TOP TO MATCH FINISH GRADE.



15' WIDE x 40' LONG OUTFALL PROTECTION. USE 'PYRAMAT' EROSION CONTROL MATRIX OVER 6" DEEP 'V' DITCH, 10' WIDE. (SEE DETAILS - SHEET 3).

REMOVE 52 L.F. OF EXIST. 24" PIPE AND INSTALL 48 L.F. OF 24" RCP. FL. EXIST. (M.H.) = EXIST. FL. NEW (M.H.) = 107.96

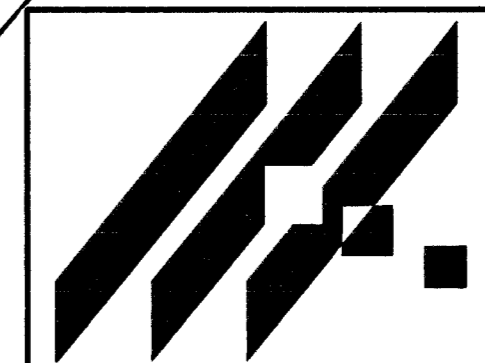
REMOVE 42 L.F. OF EXIST. 15" PIPE AND INSTALL 36 L.F. OF 15" RCP. FL. EXIST. (M.H.) = EXIST. FL. NEW (M.H.) = 106.56

REMOVE 25 L.F. OF EXIST. 24" PIPE PLUS ONE MANHOLE AND INSTALL 42 L.F. OF 24" RCP PLUS NEW TYPE 'P' MANHOLE (5' DIA.). FL. OUTLET (24") = 98.72 WITH CONCRETE TOEWALL W=2', D=4', L=8' (PLACE EROSION MAT BETWEEN TOEWALL AND END SECTION. SEE DETAILS - SHEET 3.) FL. OUT (M.H.) = 99.60 FL. IN (M.H.) = 107.96 (SE) FL. IN (M.H.) = 106.56 (NE) M.H. TOP = 113.3

MULTIMEDIA CABLEVISION ON SOUTH SIDE OF BRIDGE (SHOULD NOT BE CONFLICT).

SOUTHWESTERN BELL TELEPHONE 900 PR 200 PR ON SOUTH SIDE OF BRIDGE (SHOULD NOT BE CONFLICT).

NOTE: ALL AREAS DISTURBED, BEYOND AREA COVERED BY EROSION MAT, SHALL BE FERTILIZED, SEEDED AND MULCHED.



AREA "K" PART 2 - PHASE 1 PROJECT NAME

WICHITA DRAINAGE CANAL PLAN SHEET TITLE

JNJ DESIGN BY.	MLW DRAWN BY.	JNJ CHECKED BY.
MAY 1999 DATE	194011 JOB NO.	20 / 64 SHEET / OF

MID-KANSAS ENGINEERING CONSULTANTS, INC. 411 N. WEBB ROAD WICHITA, KS. 67206 316-684-9600