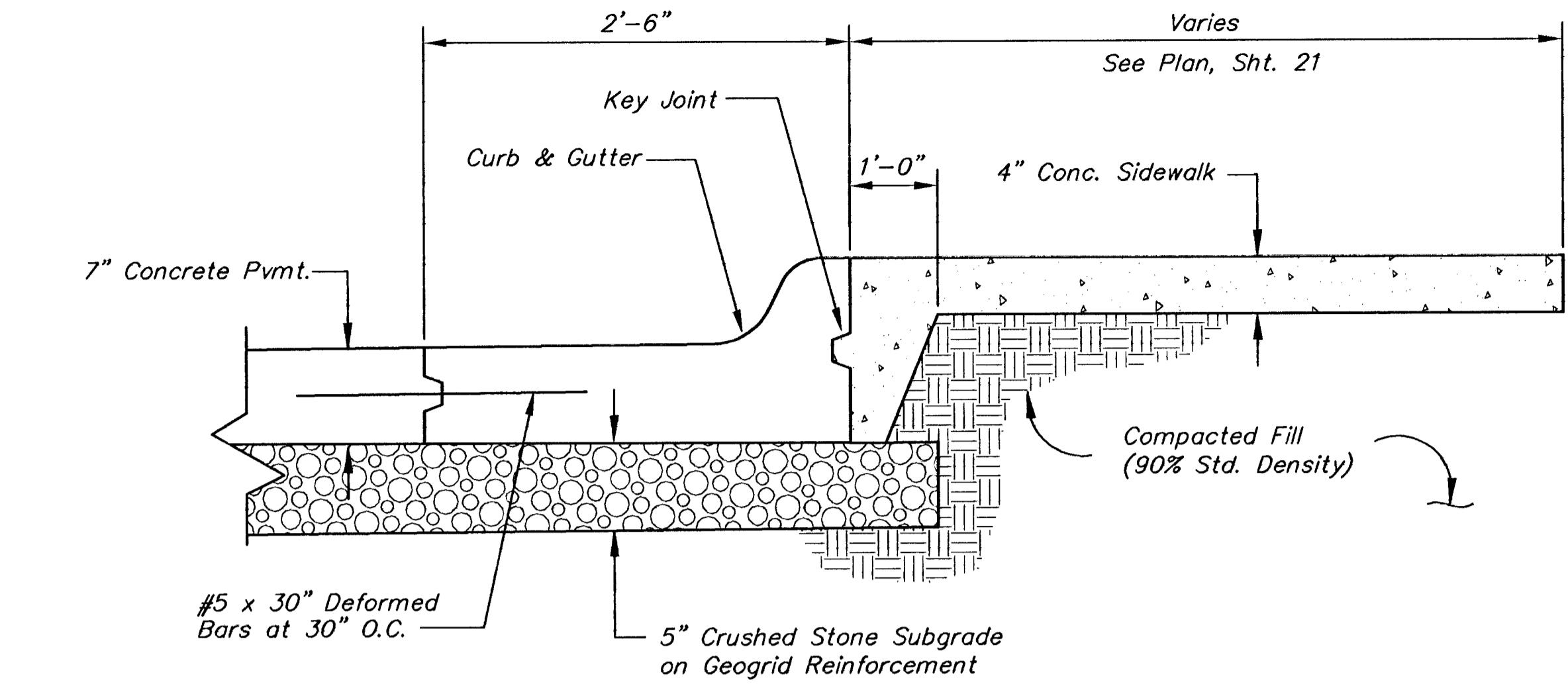
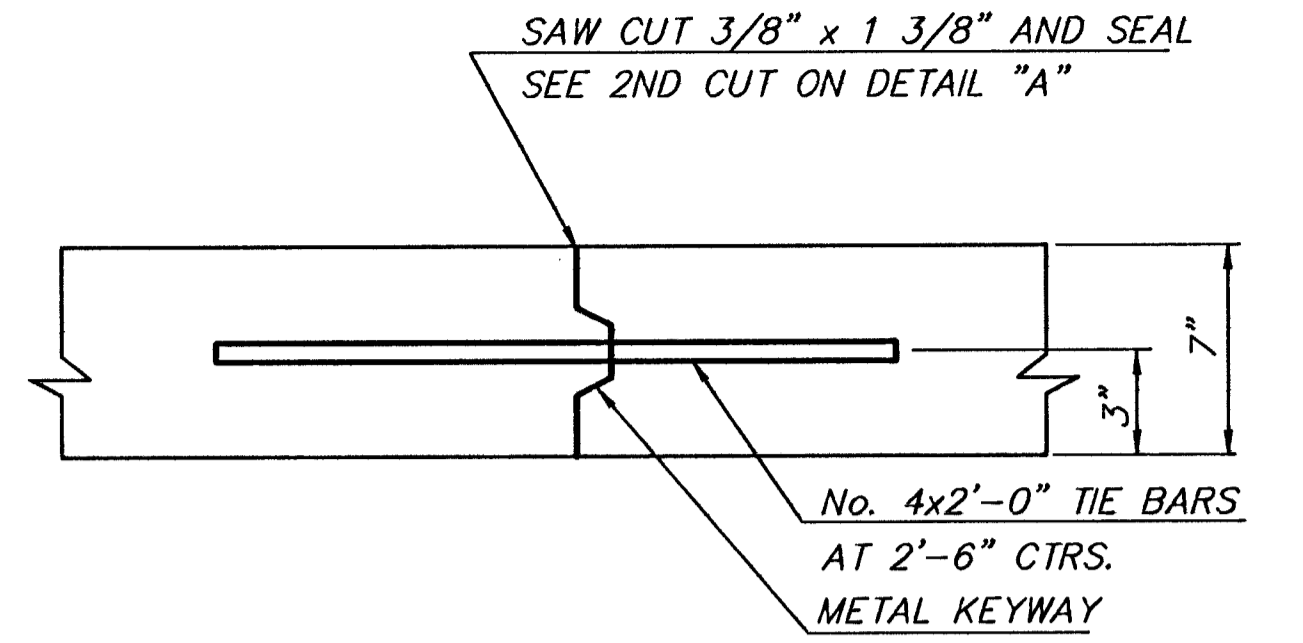


PLAN



SECTION 'B'

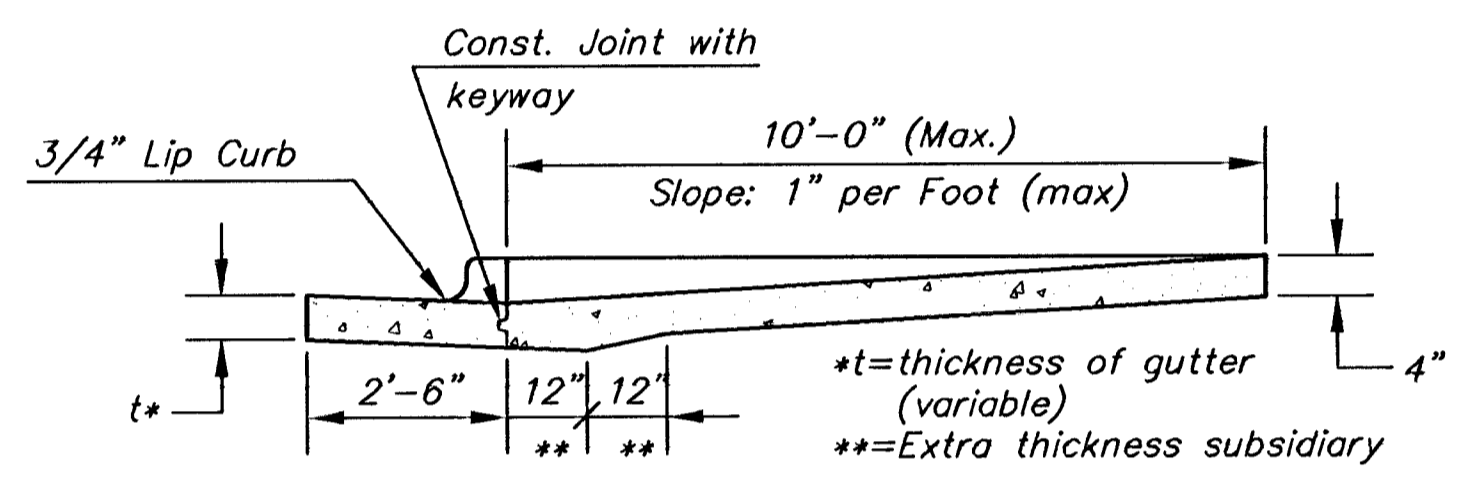
SCALE: NONE



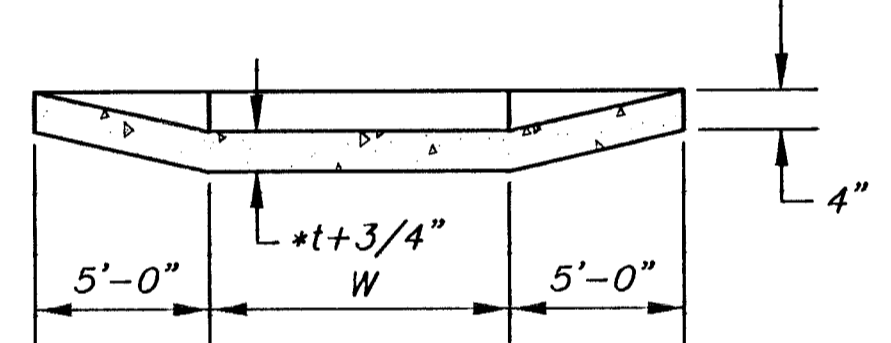
OPTIONAL LONGITUDINAL CONSTRUCTION JOINT (L.J.)

SCALE: NONE

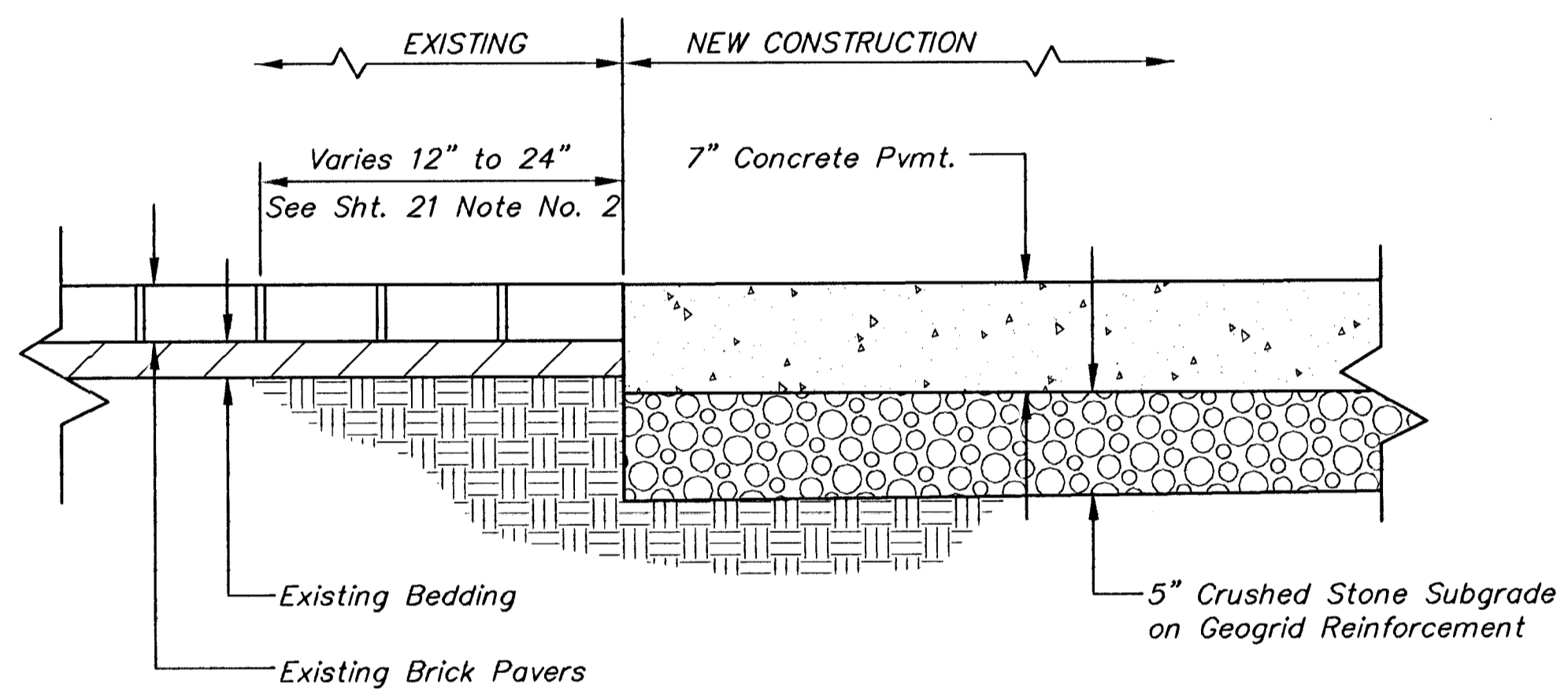
(Alternate L.J.)



SECTION A-A

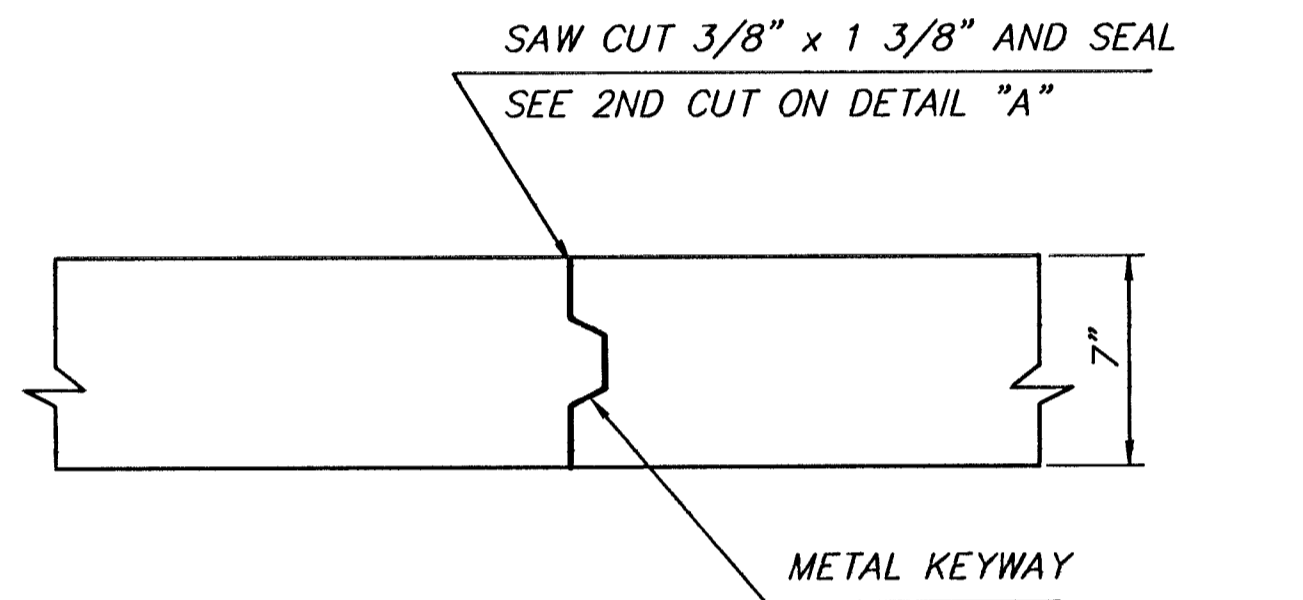


SECTION B-B



SECTION 'A'

SCALE: NONE



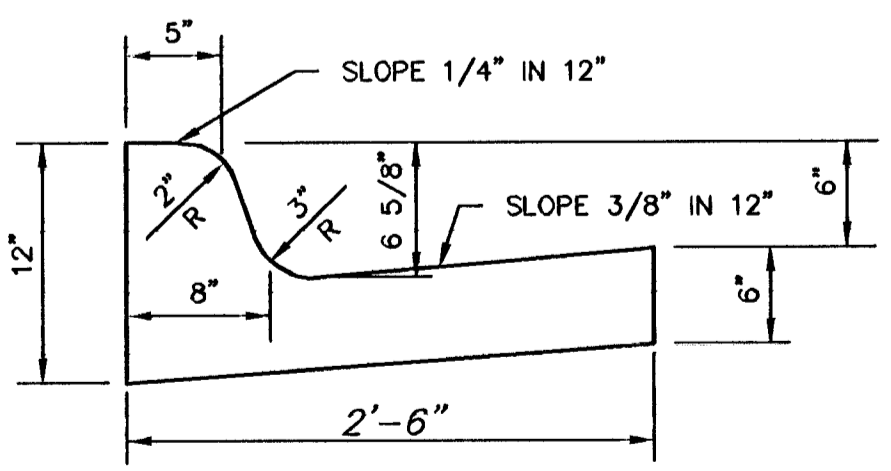
OPTIONAL CONTRACTION CONSTRUCTION JOINT (C.J.)

SCALE: NONE

(Alternate C.J.)

NOTE:
THE COST OF ALL WORK INDICATED ON THIS DETAIL SHALL BE INCLUDED IN THE UNIT PRICE BID FOR SIDEWALK RAMP.

STANDARD SIDEWALK RAMP



COMBINED CURB & GUTTER

SCALE: NONE

PERCENT OF AGGREGATE RETAINED

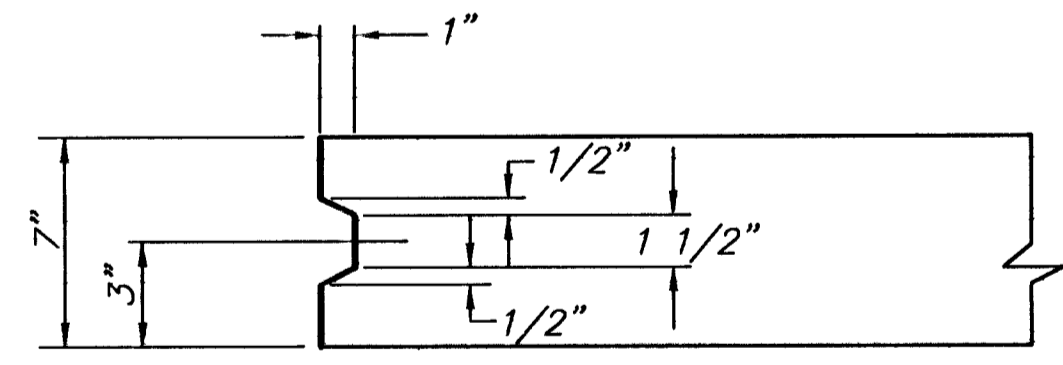
2-1/2"	0
3/4"	20-60
#4	50-80
#40	80-94
#200	90-98

ROCK QUALITY SHALL CONFORM TO THE REQUIREMENTS SPECIFIED BY THE KDOT 1990 EDITION STANDARD SPECIFICATION SUBSECTION 1102 FOR DURABILITY CLASS 1.

GEOGRID BASE REINFORCEMENT SHALL BE BX1100 GEOGRID AS MANUFACTURED BY TENSAR CORPORATION OR APPROVED EQUAL. FABRIC BASE REINFORCEMENT SHALL BE INSTALLED IN ACCORDANCE WITH MANUFACTURER'S RECOMMENDATIONS.

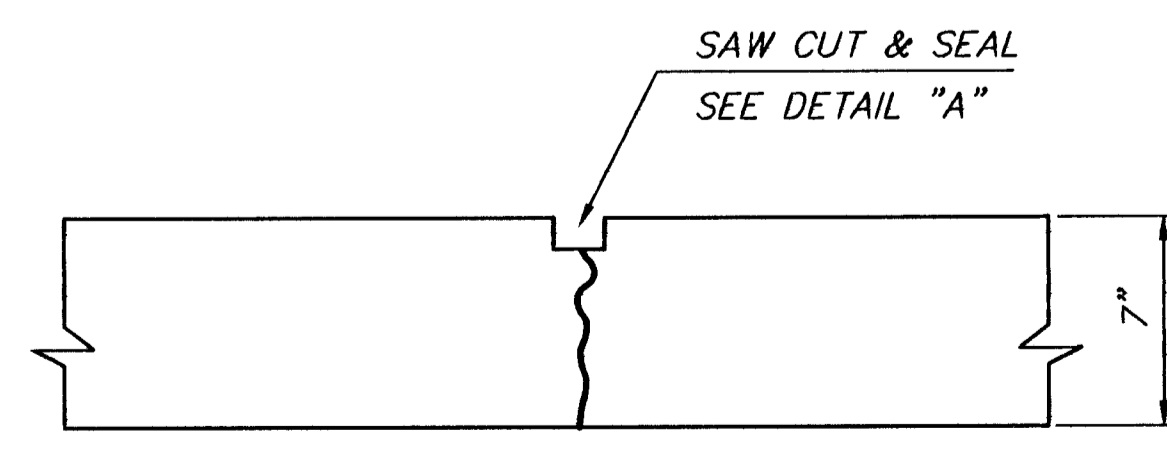
GENERAL NOTES

- 1) CRUSHED ROCK BASE IS TO BE COMPACTED AND SMOOTHED WITH A STEEL FACED ROLLER PRIOR TO PLACEMENT OF PAVEMENT.



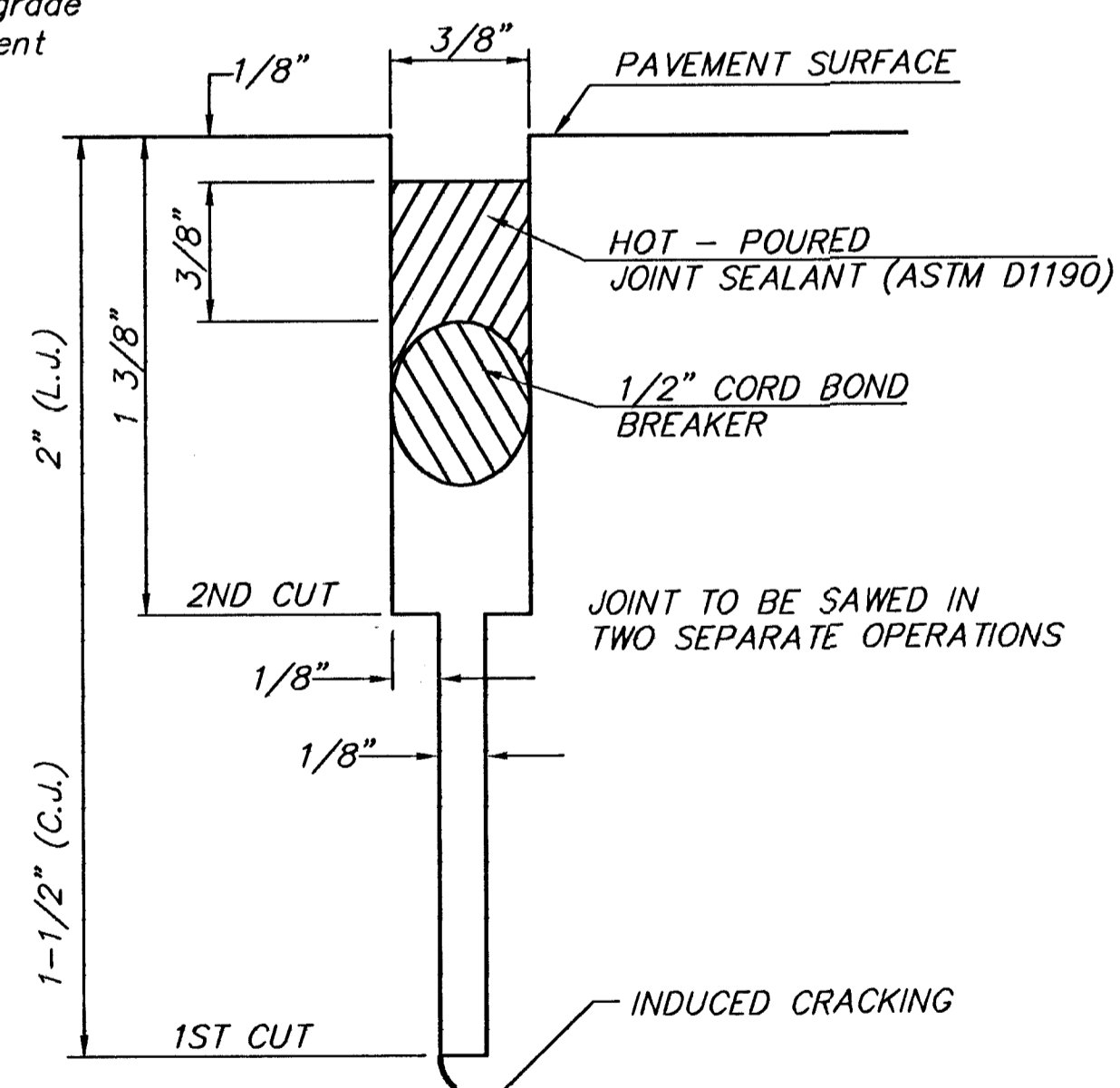
KEYWAY DETAIL

SCALE: NONE



CONTRACTION JOINT DETAIL (C.J.)

SCALE: NONE

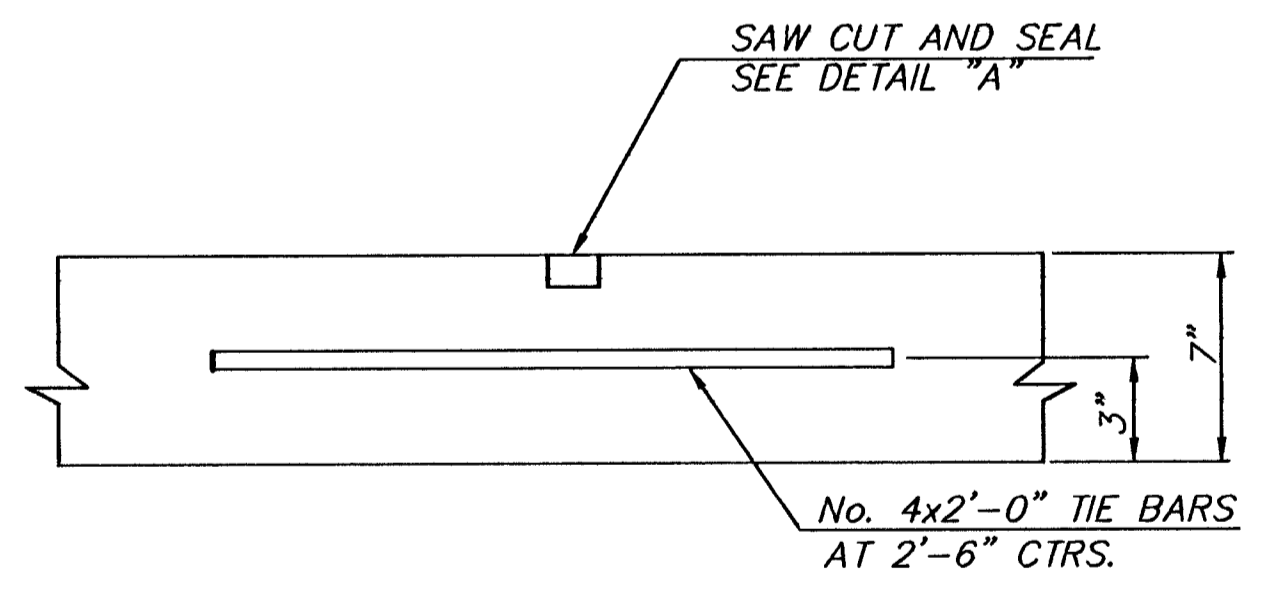


DETAIL "A"

SCALE: NONE

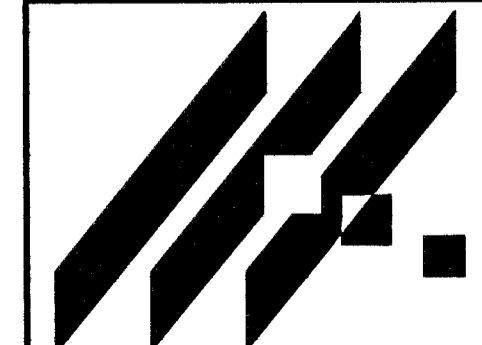
LEGEND

- C.J. IDENTIFIES CONTRACTION JOINT
- L.J. IDENTIFIES LONGITUDINAL JOINT



LONGITUDINAL JOINT DETAIL (L.J.)

SCALE: NONE



AREA "K" PART 2 - PHASE 1
PROJECT NAME
WICHITA DRAINAGE CANAL PLAN
3RD STREET NORTH CUL-DE-SAC DETAILS
SHEET TITLE

MID-KANSAS ENGINEERING CONSULTANTS, INC.
411 N WEBB ROAD
WICHITA, KS. 67206
316-684-9600

JNJ/DCH DESIGN BY. MLW DRAWN BY. JNJ CHECKED BY.
FEBRUARY 1999 DATE. 94011 JOB NO. 21A / 64 SHEET / OF

G:\CIVIL\AREA\K\94011\SUB\TAILS\9411D21A.DWG 2/3/99 90704