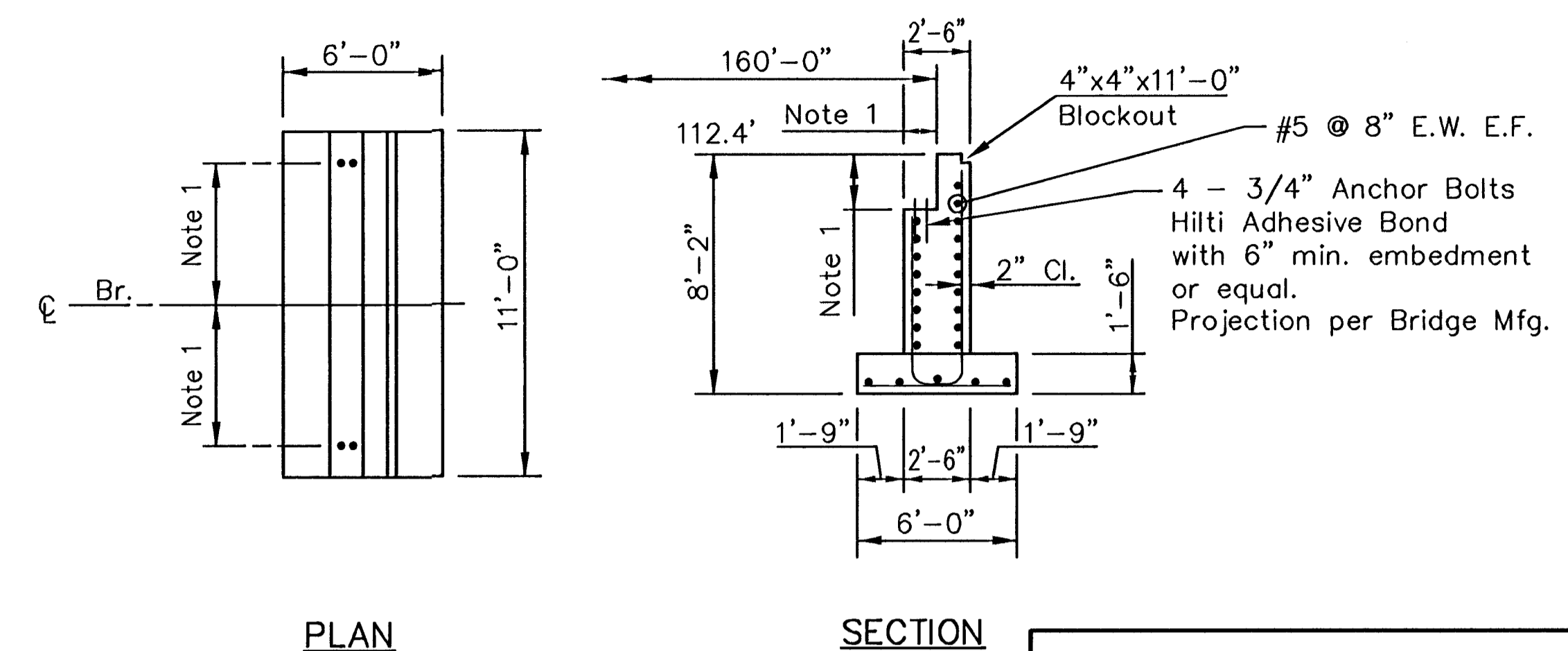


**ELEVATION**  
(Looking Downstream)  
160'-0" Steel Span Pedestrian Bridge  
8'-0" Treadway



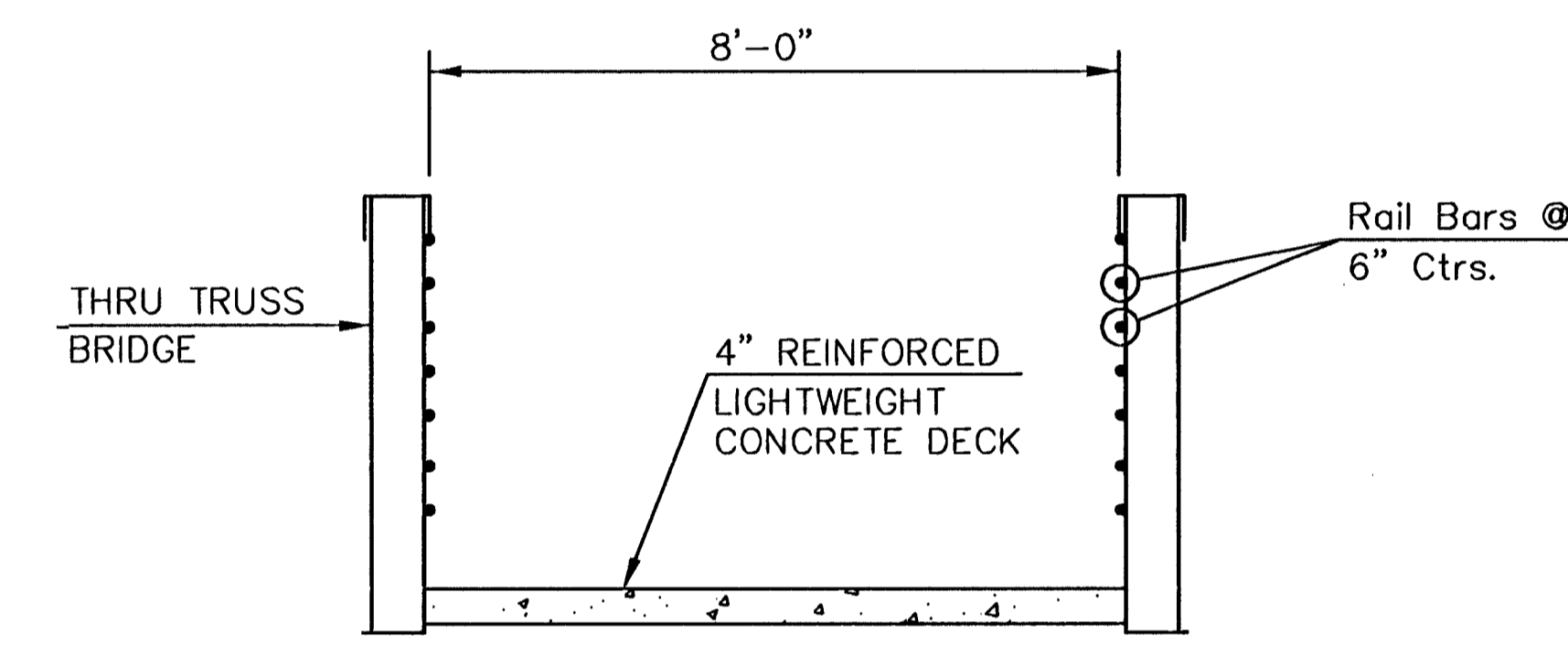
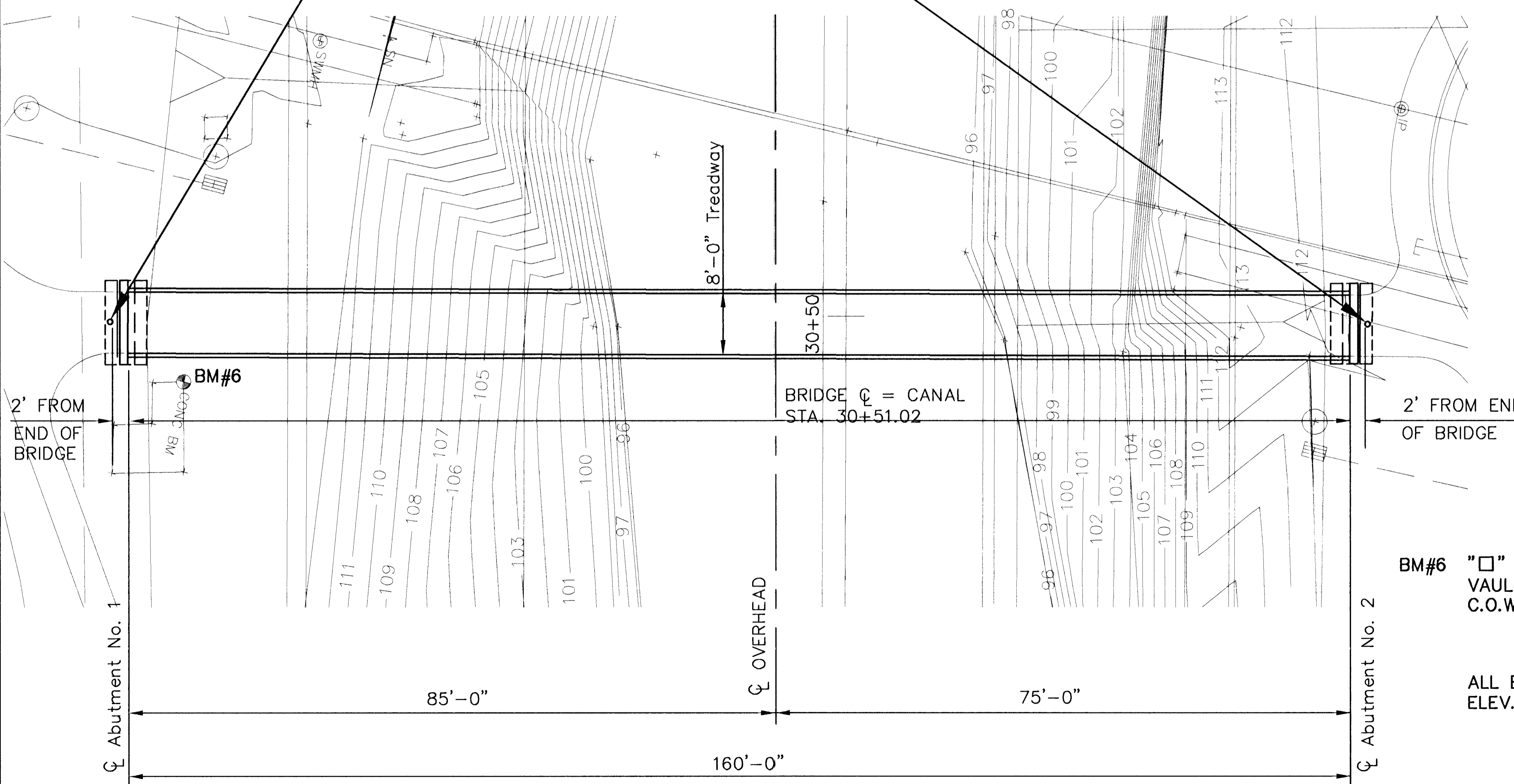
**ABUTMENT DETAILS**

**NOTE 1:** Dimensions per Bridge manufacturer.

**GENERAL NOTES:**

- CONCRETE** The concrete used for structural abutments shall be the concrete paving mix for the City of Wichita ( $f'c(\text{min.})=4,000$  psi.) The concrete shall have a minimum age of 14 days prior to additional construction of the foundations.
- REINFORCING** The reinforcing used throughout shall conform to ASTM A615, Grade 40 or Grade 60. All bonding and placing shall conform to the "Manual of Standard Practice", Concrete Reinforcing Steel Institute.
- EARTH FILL** Earth Fill areas at abutments shall be compacted to 98% Standard Density.

8" STEEL/CONCRETE FILLED BOLLARDS. SET 7' LONG BOLLARDS - 4' INTO GROUND. PAINT STEEL PIPE W/BRIGHT YELLOW PAINT.



**TYPICAL BRIDGE SECTION**

The bridge shall be designed for a live load of 85 pounds per square foot. Design drawings and calculations shall be prepared by an engineer licensed in the State of Kansas. These shall be submitted to the Engineer for approval prior to fabrication.

Main members of the bridge truss shall be fabricated of structural tubing or rolled section.

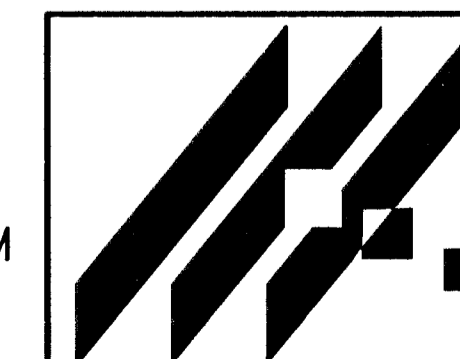
The railing shall have a maximum opening of 6".

The deck shall be 4" thick lightweight concrete.

The pedestrian bridge is available through BIG R, Greeley, Colorado, 1-800-234-0734, or CONTINENTAL BRIDGE, Alexandria, Minnesota, 1-800-328-2047, or STEADFAST BRIDGES, Fort Payne, Alabama, 1-800-749-7515, or approved equal.

BM#6 "□" CUT ON SOUTHWEST CORNER OF A CONCRETE VAULT, STA. 30+55, EAST/LEFT BANK C.O.W. ELEV. = 112.87

ALL ELEVATIONS ARE CITY OF WICHITA DATUM ELEV. (WICHITA) = N.G.V.D. - 1187.4'



MID-KANSAS ENGINEERING CONSULTANTS, INC.  
411 N WEBB ROAD  
WICHITA, K.S. 67206  
316-684-9600

**AREA "K" PART 2 - PHASE 1**  
**WICHITA DRAINAGE CANAL**  
PROJECT NAME  
**PEDESTRIAN BRIDGE DETAILS**  
**CHANNEL STA. 30+51**  
SHEET TITLE

JNJ/KJS DESIGN BY.	DPG/MLW DRAWN BY.	JNJ CHECKED BY.
FEBRUARY 1999 DATE	94011 JOB NO.	22 / 64 SHEET/OF