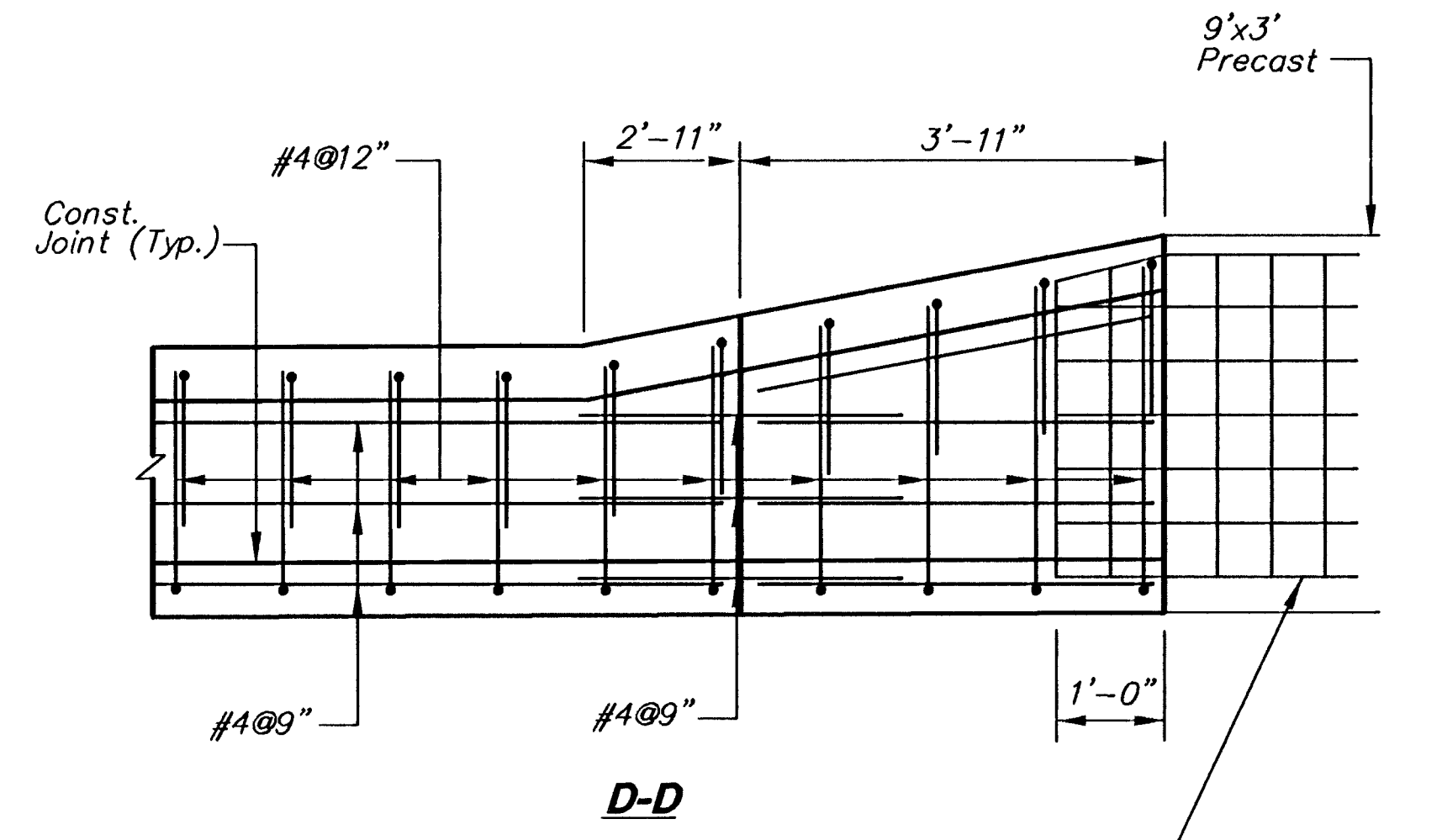
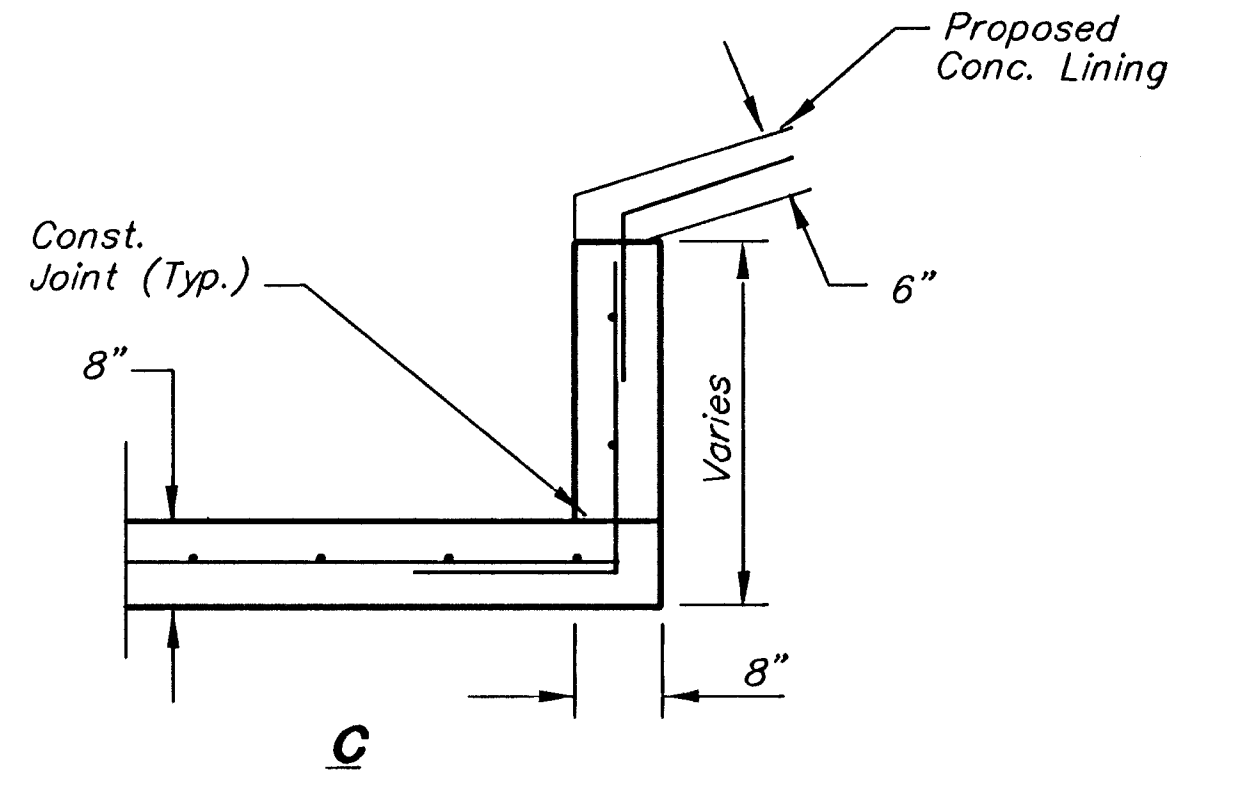
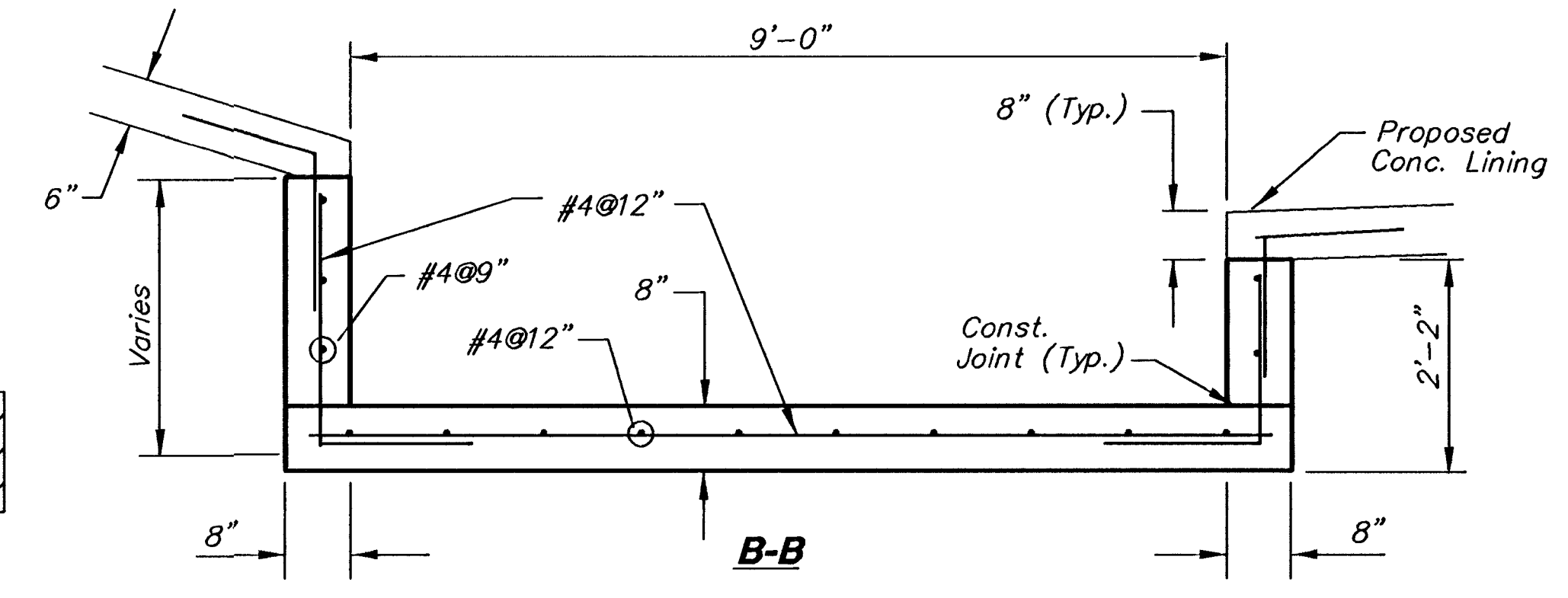
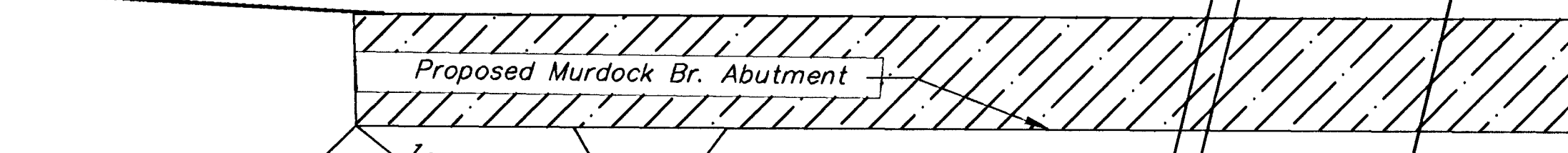
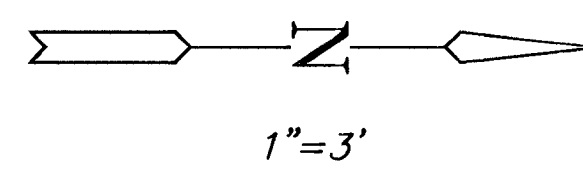
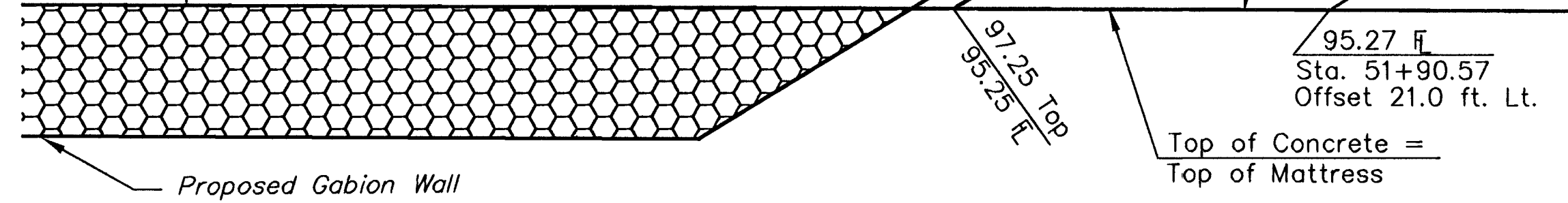
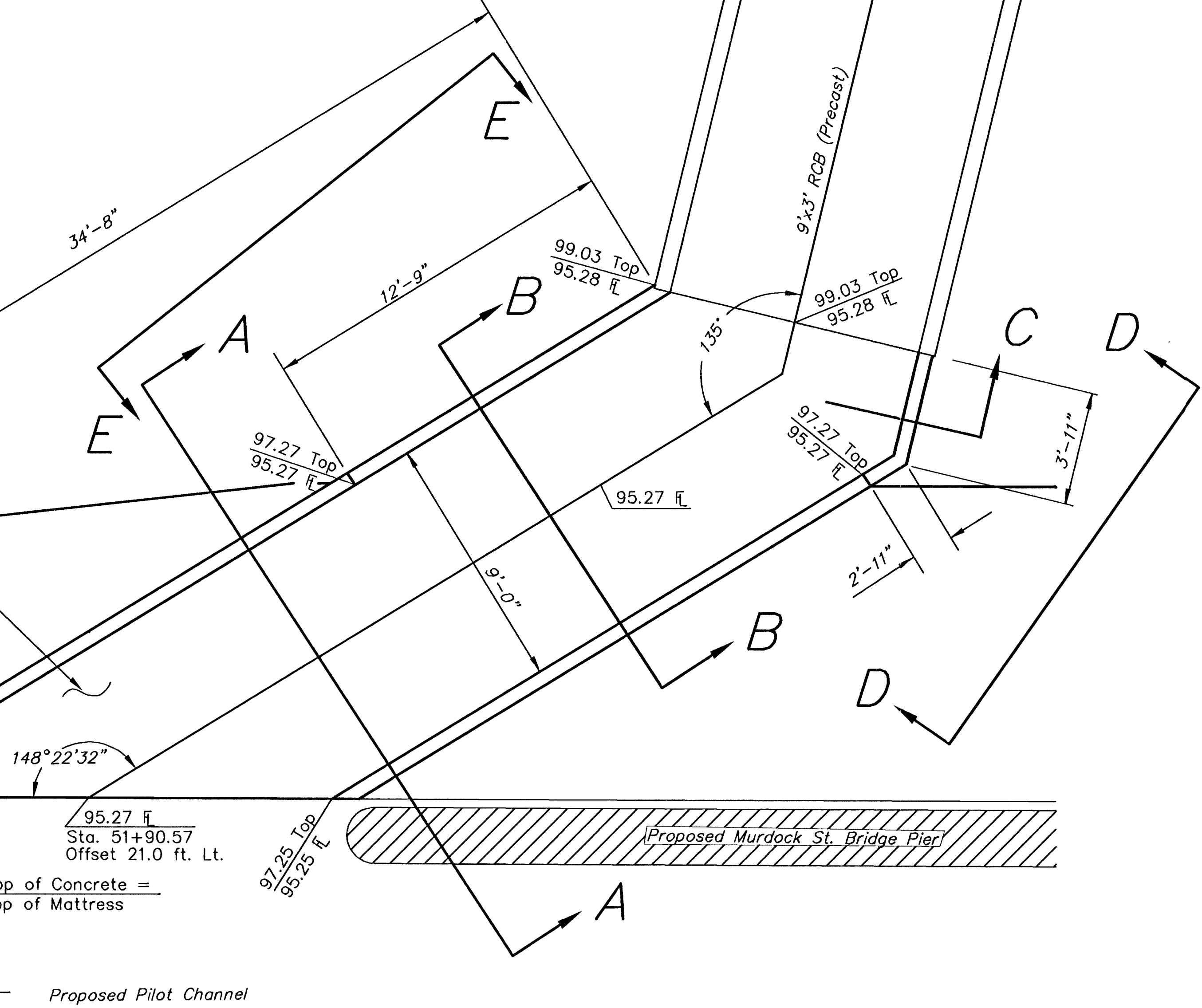


Proposed 9' Wide Concrete Channel and Walls. From End of RCB to Gabion Pilot Channel



Extend WWF 1'-0" Into Floor and Walls of Cast-In-Place RCB



- GENERAL NOTES**
1. Compact subgrade under channel 6" to 95% standard density.
 2. Bevel all exposed edges with a 3/4 inch triangular molding.
 3. All reinforcing shall conform to ASTM A615, Grade 60. All dimensions relative to reinforcing steel shall be to centerline of bar unless otherwise noted.

AREA 'K' PART 2 - PHASE 1
WICHITA DRAINAGE CANAL
PROJECT NAME
9' WIDE CHANNEL
WITH WALLS - @ STA. 51+90.57
SHEET TITLE

MID-KANSAS ENGINEERING
CONSULTANTS, INC.
411 N. WEBB ROAD
WICHITA, KS. 67206
316-684-9600

JNJ/PAF
DESIGN BY.
FEBRUARY 1999
DATE

PAF
DRAWN BY.
94011
JOB NO.

JNJ
CHECKED BY.
34 / 64
SHEET/OF

G:\CIVIL\AREA_K\94011\DETAILS\MURDOCK.DWG 2-4-99 8:57:23 am EST