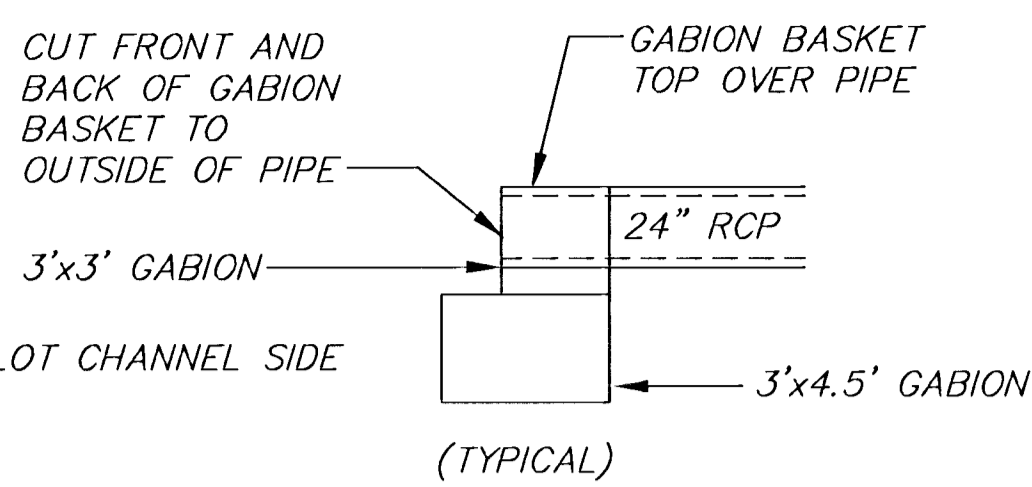
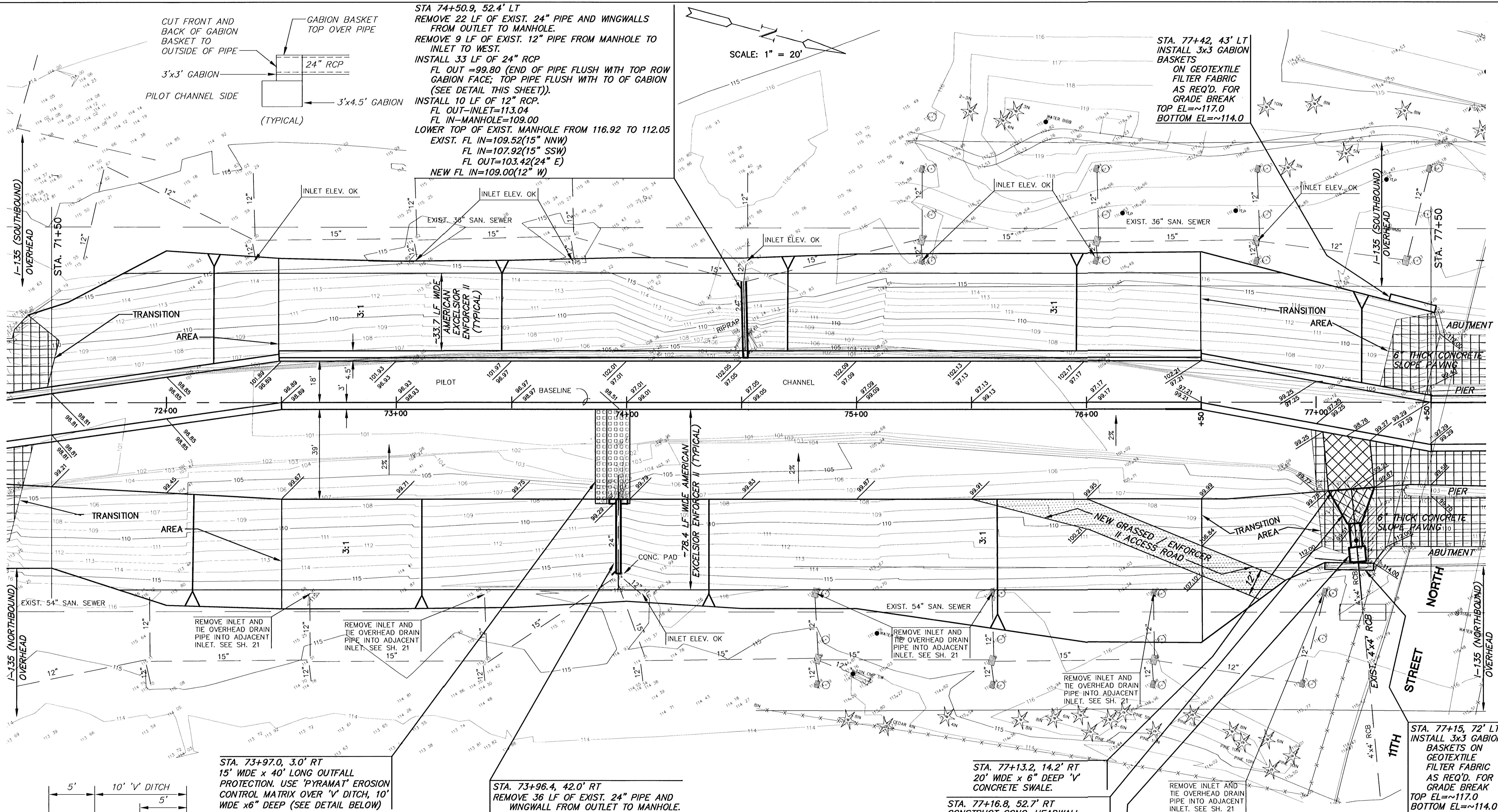


SCALE: 1" = 20'



STA 74+50.9, 52.4' LT
 REMOVE 22 LF OF EXIST. 24" PIPE AND WINGWALLS FROM OUTLET TO MANHOLE.
 REMOVE 9 LF OF EXIST. 12" PIPE FROM MANHOLE TO INLET TO WEST.
 INSTALL 33 LF OF 24" RCP
 FL OUT = 99.80 (END OF PIPE FLUSH WITH TOP ROW GABION FACE; TOP PIPE FLUSH WITH TO OF GABION (SEE DETAIL THIS SHEET)).
 INSTALL 10 LF OF 12" RCP.
 FL OUT = INLET = 113.04
 FL IN - MANHOLE = 109.00
 LOWER TOP OF EXIST. MANHOLE FROM 116.92 TO 112.05
 EXIST. FL IN = 109.52 (15" NNW)
 FL IN = 107.92 (15" SSW)
 FL OUT = 103.42 (24" E)
 NEW FL IN = 109.00 (12" W)

STA. 77+42, 43' LT
 INSTALL 3x3 GABION BASKETS
 ON GEOTEXTILE FILTER FABRIC AS REQ'D. FOR GRADE BREAK
 TOP EL = ~117.0
 BOTTOM EL = ~114.0

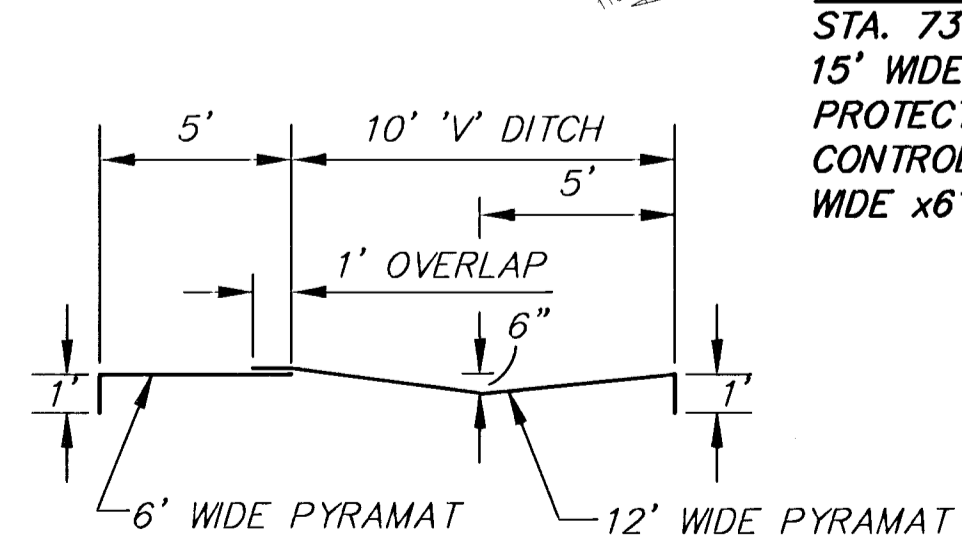


REMOVE INLET AND TIE OVERHEAD DRAIN PIPE INTO ADJACENT INLET. SEE SH. 21

REMOVE INLET AND TIE OVERHEAD DRAIN PIPE INTO ADJACENT INLET. SEE SH. 21

REMOVE INLET AND TIE OVERHEAD DRAIN PIPE INTO ADJACENT INLET. SEE SH. 21

REMOVE INLET AND TIE OVERHEAD DRAIN PIPE INTO ADJACENT INLET. SEE SH. 21



STA. 73+97.0, 3.0' RT
 15' WIDE x 40' LONG OUTFALL PROTECTION. USE 'PYRAMAT' EROSION CONTROL MATRIX OVER 'V' DITCH, 10' WIDE x 6" DEEP (SEE DETAIL BELOW)

STA. 73+96.4, 42.0' RT
 REMOVE 36 LF OF EXIST. 24" PIPE AND WINGWALL FROM OUTLET TO MANHOLE.
 INSTALL 34 LF OF 24" RCP W/ END SECTION FL OUT = 99.29 (END OF END SECTION SHALL BE AT BEGINNING OF 3:1 SIDE SLOPE). W/ CONC. TOEWALL W=2', D=4', L=8' (PLACE EROSION MAT BETWEEN TOEWALL AND END SECTION (SEE DETAIL @ SIDE)).
 LOWER TOP OF EXIST. MANHOLE FROM 116.14 TO 111.45
 EXIST. FL IN = 108.04 (15" E)
 FL IN = 108.14 (15" S)
 FL IN = 108.64 (12" NNE)
 FL OUT = 103.04 (24" W)

STA. 77+13.2, 14.2' RT
 20' WIDE x 6" DEEP 'V' CONCRETE SWALE.

STA. 77+16.8, 52.7' RT
 CONSTRUCT CONC. HEADWALL, APRON, WITH WINGWALLS MATCHING CHANNEL SIDE SLOPE (SEE DETAIL - SH. 24)

STA. 77+18.0, 66.1' RT
 REMOVE 6 LF OF 4x4 RCB
 CONSTRUCT 5'x5'-6" DROP STRUCTURE SEE DETAIL SHEET 18.
 TOP = 111.0
 FL IN = 105.2
 FL OUT = 99.75
 INSTALL 16 LF 4x4 RCB
 FL AT HEADWALL = 95.51

STA. 77+15, 72' LT
 INSTALL 3x3 GABION BASKETS ON GEOTEXTILE FILTER FABRIC AS REQ'D. FOR GRADE BREAK
 TOP EL = ~117.0
 BOTTOM EL = ~114.0



AREA "K" PART 2 - PHASE 2		
WICHITA DRAINAGE CANAL		
PROJECT NAME		
WICHITA DRAINAGE CANAL PLAN		
SHEET TITLE		
JNJ	RSB	TKM
DESIGN BY:	DRAWN BY:	CHECKED BY:
JAN. 2001	94011	5 / 47
DATE	JOB NO.	SHEET / OF