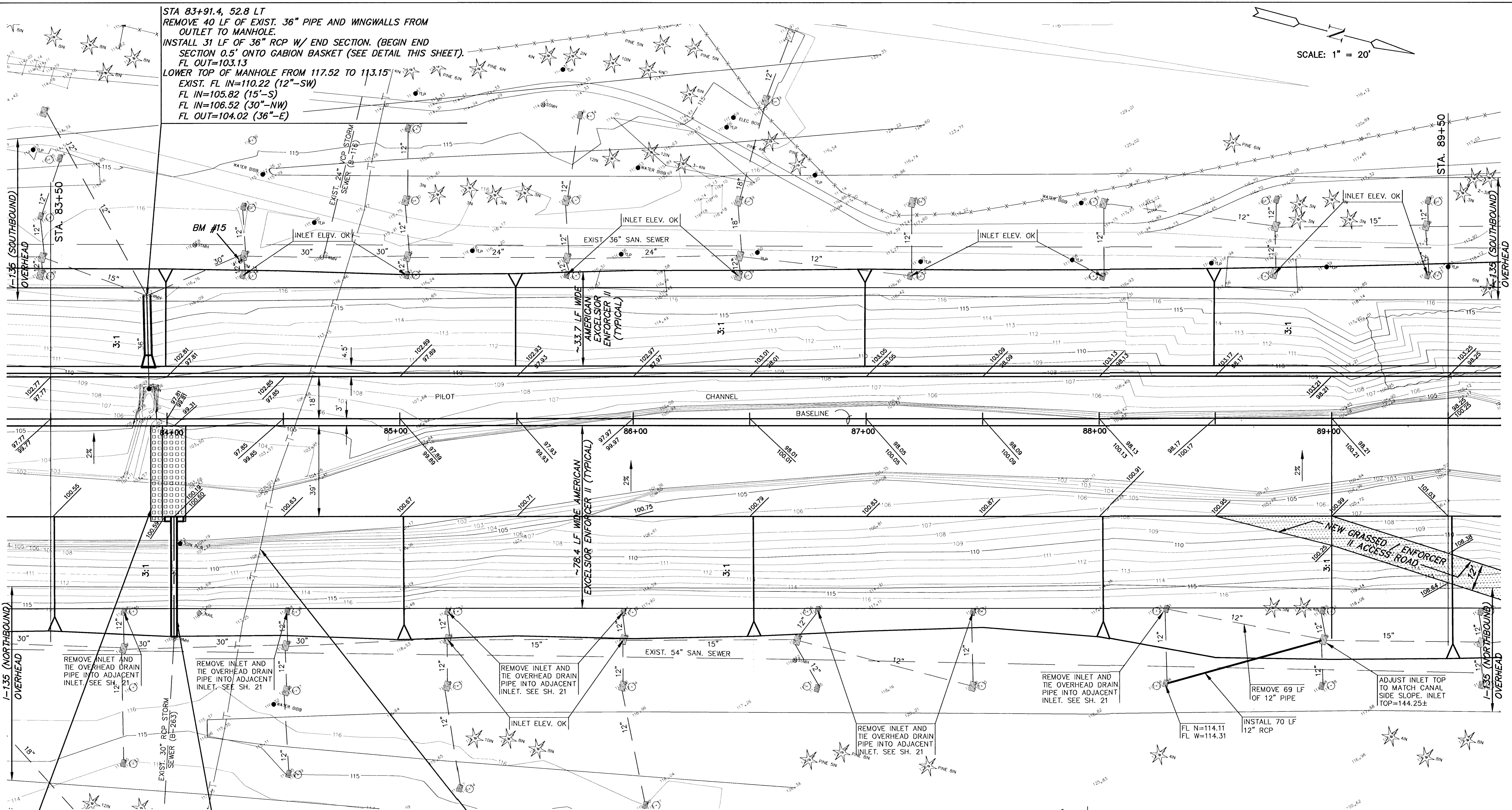



SCALE: 1" = 20'

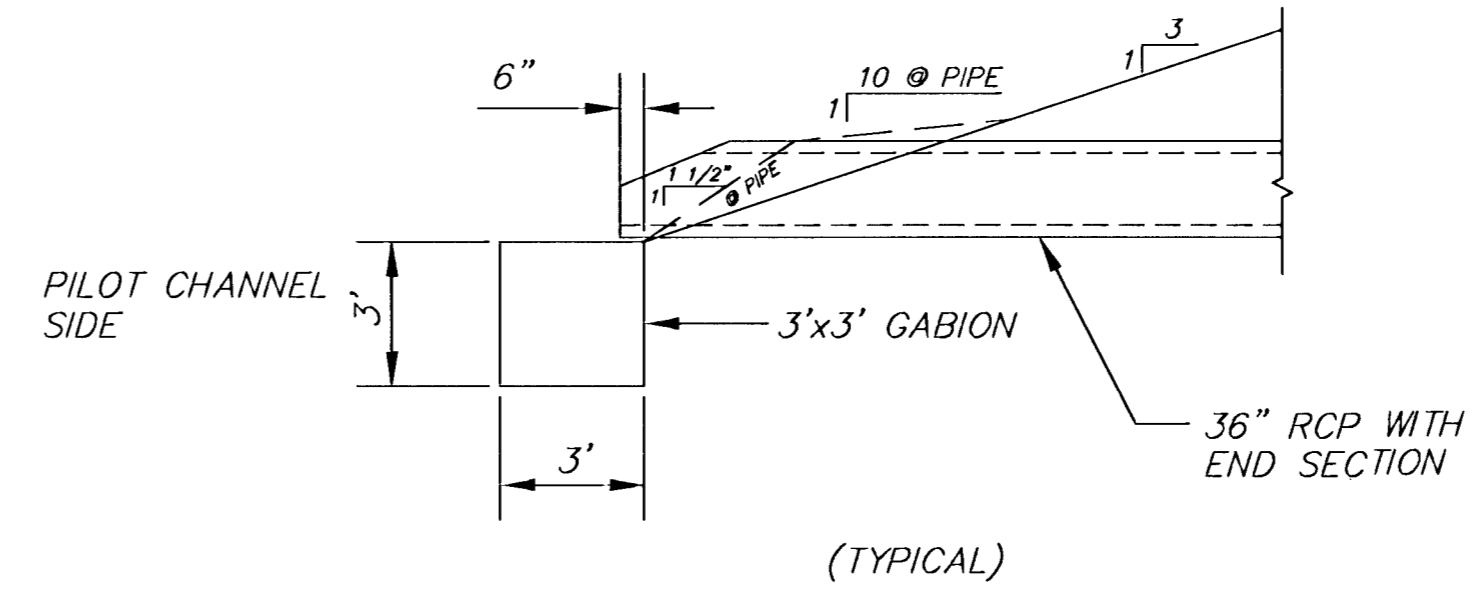
STA 83+91.4, 52.8 LT
REMOVE 40 LF OF EXIST. 36" PIPE AND WINGWALLS FROM
OUTLET TO MANHOLE.
INSTALL 31 LF OF 36" RCP W/ END SECTION. (BEGIN END
SECTION 0.5' ONTO GABION BASKET (SEE DETAIL THIS SHEET).
FL OUT=103.13
LOWER TOP OF MANHOLE FROM 117.52 TO 113.15'
EXIST. FL IN=110.22 (12"-SW)
FL IN=105.82 (15"-S)
FL IN=106.52 (30"-NW)
FL OUT=104.02 (36"-E)



STA. 84+03.1, 3.0' RT
15' WIDE x 40' LONG OUTFALL
PROTECTION. USE 'PYRAMAT'
EROSION CONTROL MATRIX OVER
'V' DITCH, 10' WIDE x 6" DEEP.
(SEE DETAIL - SHEET 5)

STA. 84+03.0, 94.4 RT
REMOVE 41 LF OF EXISTING 30" PIPE FROM
OUTLET TO MANHOLE
INSTALL 53 LF OF 30" RCP W/ END SECTION
FL OUT=100.19 (END OF END SECTION
SHALL BE AT BEGINNING OF 3:1
SLOPE). W/ CONC. TOEWALL W=2', D=4', L=8'
(PLACE EROSION MAT BETWEEN TOEWALL AND
END SECTION (SEE DETAIL - SHEET 5)).
LEAVE MANHOLE TOP @ 118.00
EXISTING. FL IN OUT @ 108.40 (30" RCP-E&W).

CAUTION:
SOUTHWESTERN BELL TELEPHONE
2x2 CONDUIT IN CONCRETE

CONTRACTOR SHALL VERIFY
LOCATION AND DEPTH BY
PROBING DURING CONSTRUCTION.
IF CONFLICT DEVELOPS,
CONTRACTOR SHALL CONTACT
S.W.B., IMMEDIATELY.



MKEC
ENGINEERING CONSULTANTS
411 N. WEBB ROAD
WICHITA, KS. 67206
316-684-9600

**AREA 'K' PART 2 - PHASE 2
WICHITA DRAINAGE CANAL**
PROJECT NAME

WICHITA DRAINAGE CANAL PLAN
SHEET TITLE

JNJ DESIGN BY.	RSB DRAWN BY.	TKM CHECKED BY.
JAN. 2001 DATE	94011 JOB NO.	8 / 47 SHEET OF

6: CIVIL\AREA_K\94011\PLANS\94011015.dwg Mon Jun 04 14: 03:14 2001