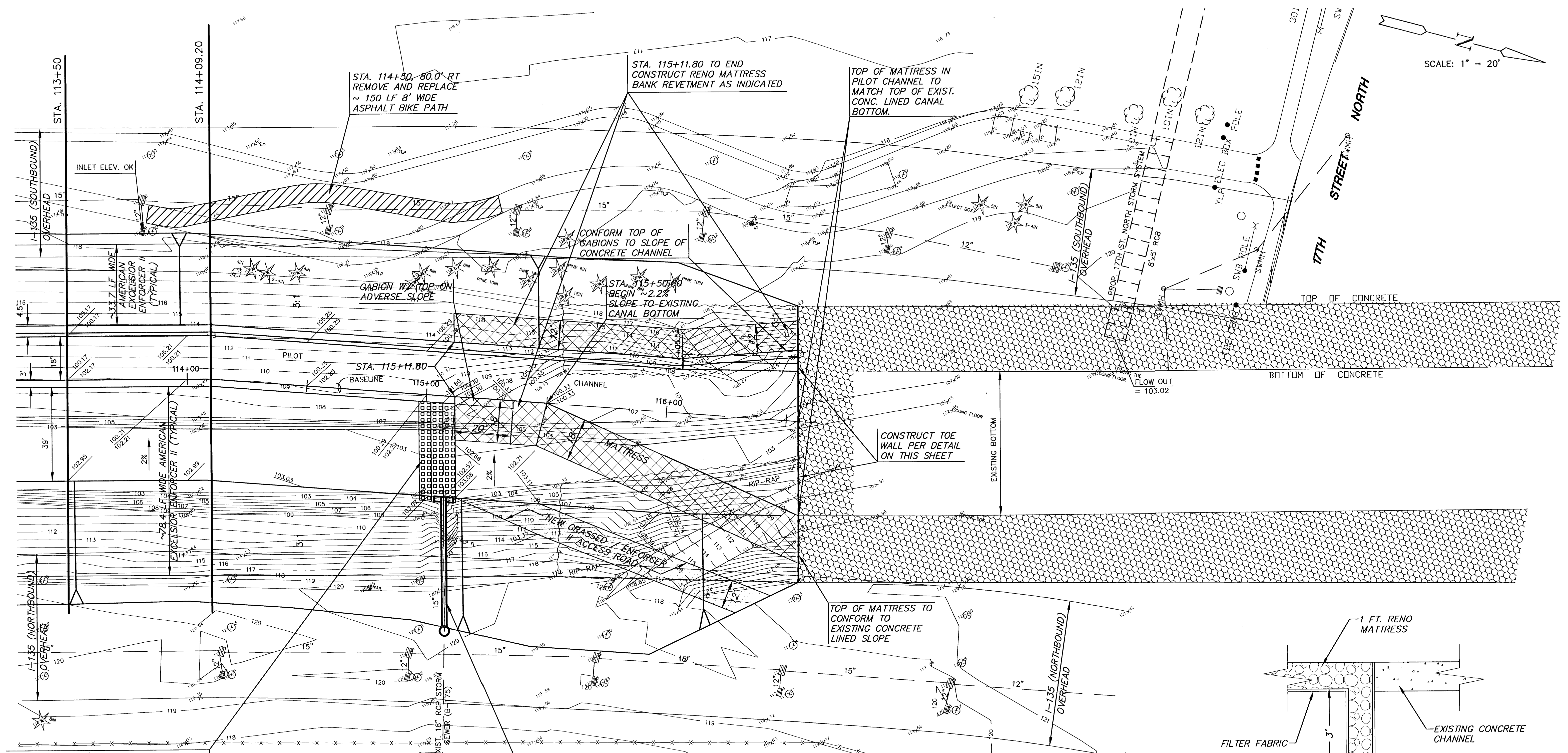


SCALE: 1" = 20'



STA. 114+50, 80.0' RT  
REMOVE AND REPLACE  
~ 150 LF 8' WIDE  
ASPHALT BIKE PATH

STA. 115+11.80 TO END  
CONSTRUCT RENO MATTRESS  
BANK REVETMENT AS INDICATED

TOP OF MATTRESS IN  
PILOT CHANNEL TO  
MATCH TOP OF EXIST.  
CONC. LINED CANAL  
BOTTOM.

CONFORM TOP OF  
GABIONS TO SLOPE OF  
CONCRETE CHANNEL

GABION W/ TOP ON  
ADVERSE SLOPE

STA. 115+50.00  
BEGIN ~ 2.2%  
SLOPE TO EXISTING  
CANAL BOTTOM

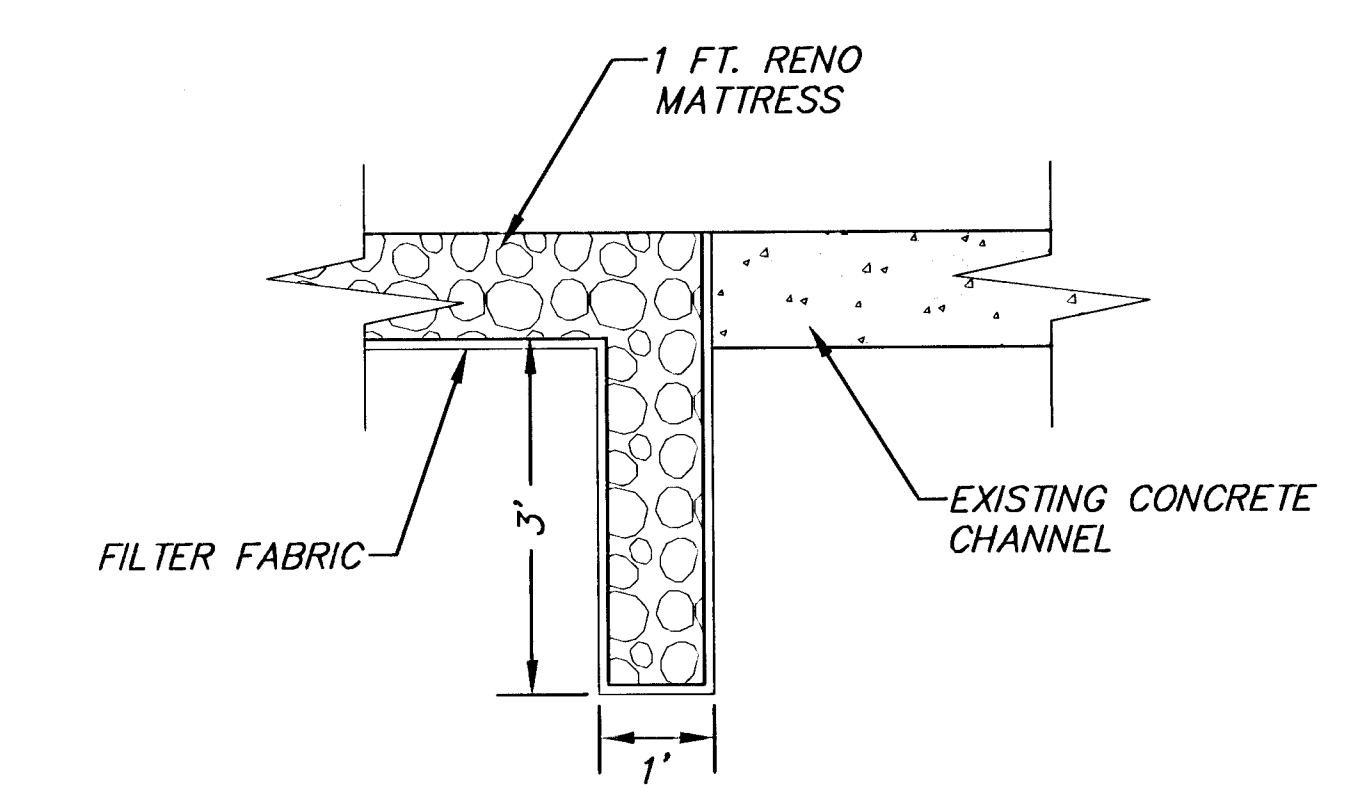
CONSTRUCT TOE WALL  
PER DETAIL  
ON THIS SHEET

TOP OF MATTRESS TO  
CONFORM TO  
EXISTING CONCRETE  
LINED SLOPE

STA 115+7.0, 3.0' RT  
15' WIDE x 40' LONG OUTFALL PROTECTION.  
USE 'PYRAMAT' EROSION CONTROL MATRIX  
OVER 'V' DITCH, 10' WIDE x 6" DEEP.  
(SEE DETAIL - SHEET 5).

STA. 115+10.1, 42.0' RT  
REMOVE 38 LF OF EXIST. 18" PIPE FROM  
OUTLET TO PROPOSED MANHOLE.  
INSTALL 56 LF OF 18" RCP W/ END SECTION  
FL OUT=102.57  
(END OF END SECTION SHALL BE AT  
BEGINNING OF 3:1 SIDE SLOPE). W/ CONC.  
TOEWALL W=2',D=4',L=8" (PLACE EROSION  
MAT BETWEEN TOEWALL AND END SECTION  
(SEE DETAIL - SHEET 5)).  
INSTALL TYPE 'P' MANHOLE (DIA=4') APPROX.  
11' NORTH OF OVERHEAD COLUMN.  
TOP OF MANHOLE=120.50  
FL IN=111.70 (18"-E)  
FL OUT=106.00 (18"-W)

BM=20  
C.O.W. DISK ON HUBGUARD AT SOUTHEAST  
CORNER OF 17TH STREET NORTH BRIDGE.  
C.O.W. ELEV. = 124.44



**MKEC**  
ENGINEERING CONSULTANTS  
411 N. WEBB ROAD  
WICHITA, KS. 67208  
316-684-9600

**AREA "K" PART 2 - PHASE 2  
WICHITA DRAINAGE CANAL**  
PROJECT NAME  
**UPPER END MODIFICATIONS  
WICHITA DRAINAGE CANAL PLAN**  
SHEET TITLE

JNJ DESIGN BY:	RSB DRAWN BY:	TKM CHECKED BY:
JAN. 2001 DATE	94011 JOB NO.	16A/ 47 SHEET/OF