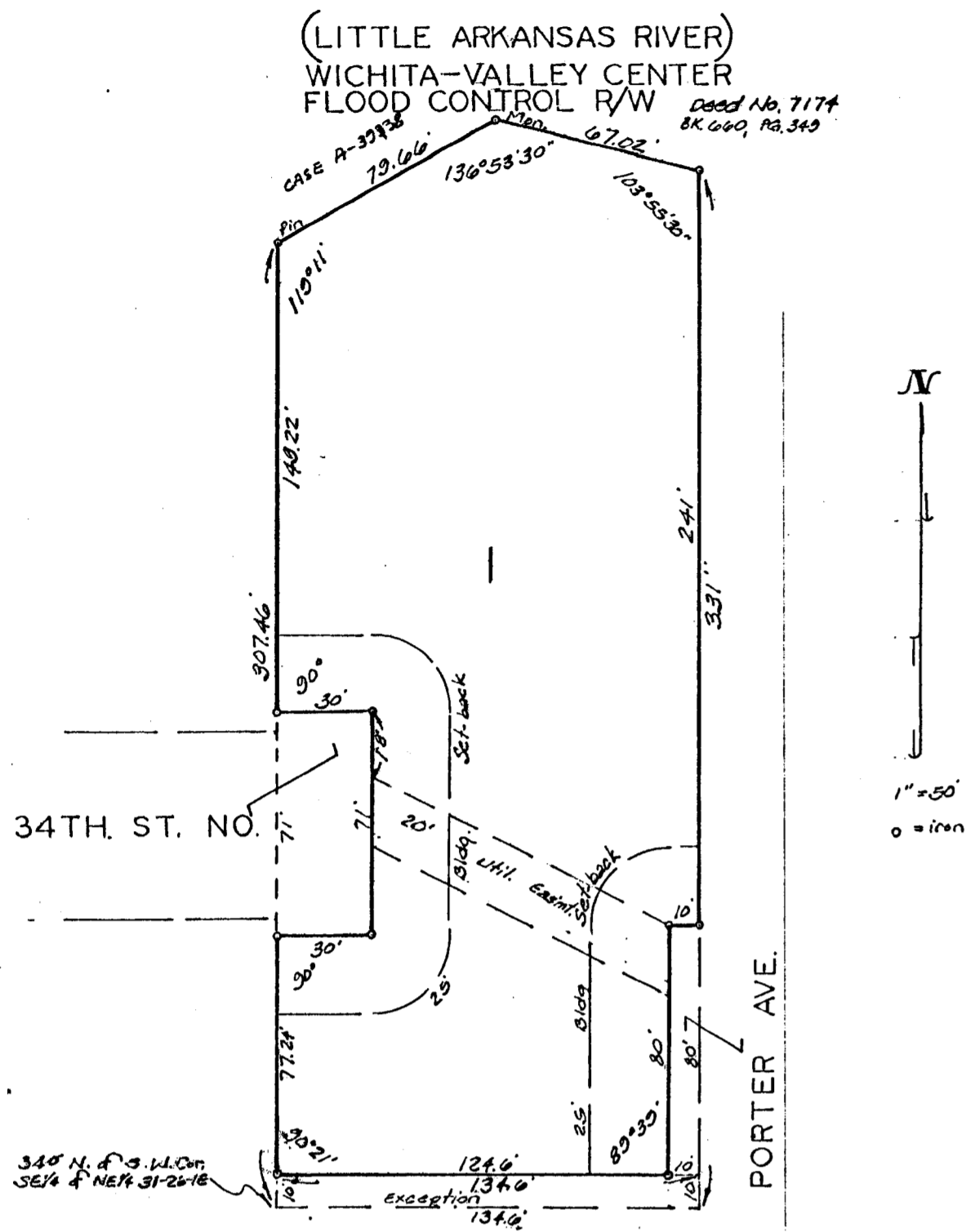


# AMBERG ADDITION

WICHITA, KANSAS.



This plat of "AMBERG ADDITION", Wichita, Kansas, has been submitted to and approved by the Wichita-Sedgwick County Metropolitan Area Planning Commission, Wichita, Kansas. Dated this 24<sup>th</sup> day of July 1975.

Wichita-Sedgwick County Metropolitan Area Planning Commission

Harlan R. Kamen Chairman  
Harlan R. Kamen  
Robert A. Lakin Secretary  
Robert A. Lakin

This plat approved and all dedications shown hereon accepted by the Board of Commissioners of the City of Wichita, this 19<sup>th</sup> day of August 1975.

Corniz A. Peltz Chairman  
Corniz A. Peltz  
Ronald C. Orsick Secretary  
Ronald C. Orsick

This plat approved and all dedications shown hereon accepted by the Board of Commissioners of Sedgwick County, Kansas, this 4<sup>th</sup> day of September 1975.

Earl E. Rushton Chairman  
Earl E. Rushton  
John Scott Commissioner  
John Scott  
John Hal Commissioner  
John Hal  
George Pierce County Clerk  
George Pierce

Entered on transfer record this 4<sup>th</sup> day of September 1975.

George Pierce County Clerk  
George Pierce

State of Kansas, ss. This is to certify that this plat was filed for record in the office of the Register of Deeds, this 4<sup>th</sup> day of September 1975, at 11:00 o'clock A.M.; and is duly recorded.

Bette J. McCurt Register of Deeds  
Bette J. McCurt  
Pat Kotler Deputy  
Pat Kotler

State of Kansas, ss. Be it remembered that on this 24<sup>th</sup> day of July 1975, that before me a notary public in aforesaid county and state came Harold F. Amberg and Mildred B. Amberg, his wife, to me known to be the same persons who executed the foregoing instrument of writing and acknowledged the execution of the same. In testimony whereof I have hereunto set my hand and affixed my notarial seal the day and year above written.

Julius Doane Notary Public  
My Comm. Exp. 3-14-77 FRED J. DOANE

State of Kansas, ss. We, Baughman Company, Surveyors in aforesaid county and state do hereby certify that we have surveyed and platted "AMBERG ADDITION", Wichita, Kansas and that the accompanying plat is a true and correct exhibit of the property surveyed, described as beginning 340 feet north of the S.W. corner of the SE 1/4 of the NE 1/4 of Sec. 31, Twp. 26-S, R-1-E of the 6th P.M.; thence east 134.6 feet; thence north parallel with the west line of said SE 1/4 of the NE 1/4, 340 feet more or less to the center line of the Little Arkansas River; thence northwesterly along the center line of said river to a point north of beginning; thence south along the west line of said SE 1/4 of the NE 1/4, 387 feet more or less to beginning, except that part condemned for Wichita-Valley Center Flood Control right-of-way in Condemnation Case A-39338, and except the south 10 feet thereof.

Baughman Company

William L. Forber Surveyor  
William L. Forber

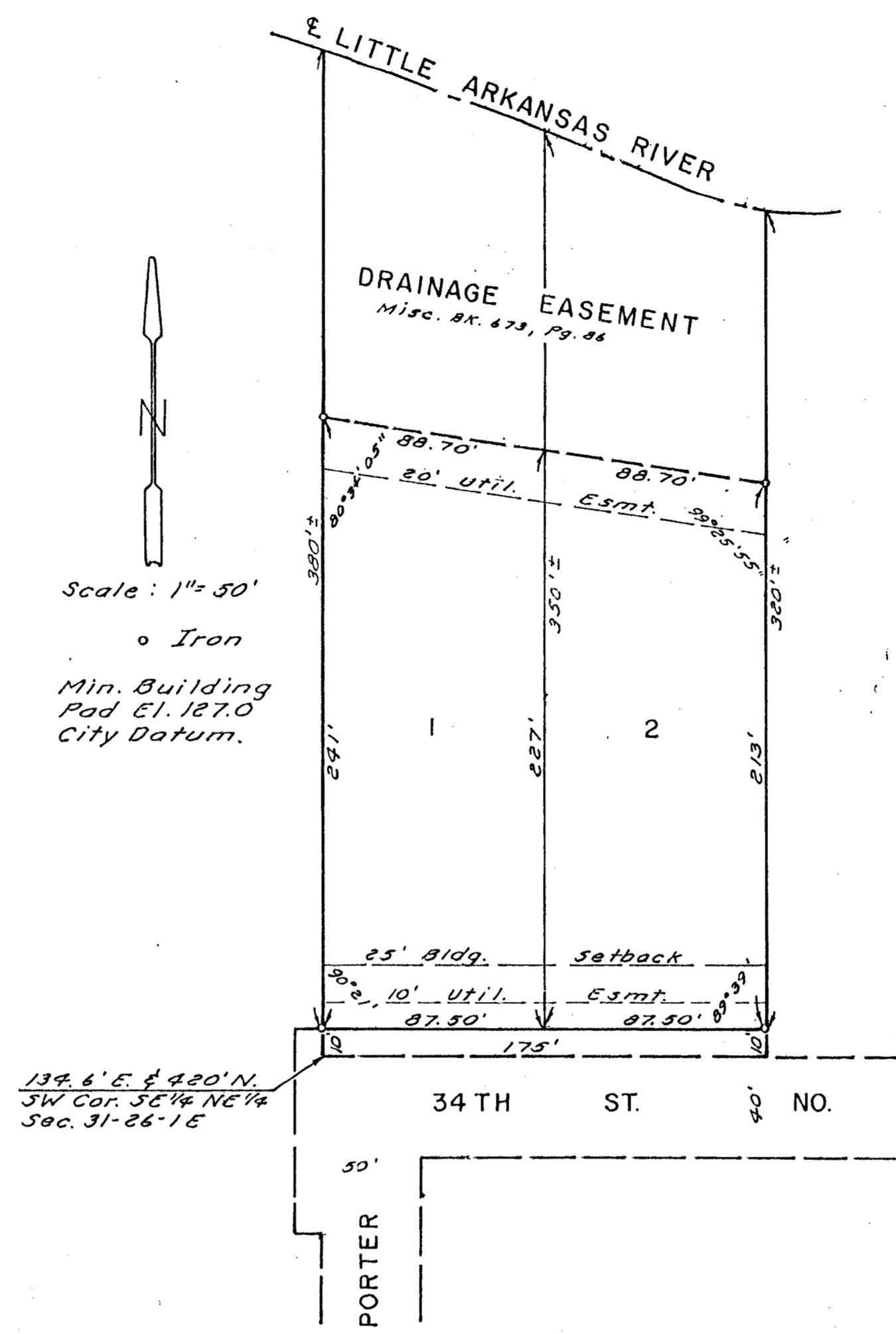
Know all men by these presents that we, Harold F. Amberg and Mildred B. Amberg, his wife, have caused the land described in the surveyors certificate to be platted into a lot and streets to be known as "AMBERG ADDITION", Wichita, Kansas. The easement is hereby granted as indicated for the construction and maintenance of all public utilities. The streets are hereby dedicated to and for the use of the public.

Harold F. Amberg  
Harold F. Amberg

Mildred B. Amberg  
Mildred B. Amberg

# BLAHA ADDITION

WICHITA, KANSAS



This plat of "BLAHA ADDITION", Wichita, Kansas, has been submitted to and approved by the Wichita-Sedgwick County Metropolitan Area Planning Commission, Wichita, Kansas. Dated this 7<sup>th</sup> day of October, 1982.

Wichita-Sedgwick County Metropolitan Area Planning Commission  
David B. Bann Chairman  
David B. Bann  
Robert A. Lakin Secretary  
Robert A. Lakin

This plat approved and all dedications shown hereon accepted by the Board of City Commissioners, Wichita, Kansas, this 19<sup>th</sup> day of October, 1982.

Albert J. Kutz Mayor  
Albert J. Kutz  
Donald C. Orsick City Clerk  
Donald C. Orsick

This plat approved and all dedications shown hereon accepted by the Board of County Commissioners, Sedgwick County, Kansas, this 27<sup>th</sup> day of October, 1982.

Bartholomew H. White Chairman  
Bartholomew H. White  
John Scott Commissioner  
John Scott  
John Hal Commissioner  
John Hal  
Dorothy F. White County Clerk  
Dorothy F. White

Entered on transfer record this 27<sup>th</sup> day of October, 1982.

Dorothy F. White County Clerk  
Dorothy F. White

State of Kansas, ss. This is to certify that this plat has been filed for record in the Office of the Register of Deeds this 28<sup>th</sup> day of October, 1982, at 8:00 o'clock, A. M., and is duly recorded.

Bette J. McCurt Register of Deeds  
Bette J. McCurt  
Pat Kotler Deputy  
Pat Kotler

State of Kansas, ss. We, Baughman Company, P.A., Sedgwick County Surveyors in aforesaid county and state, do hereby certify that we have surveyed and platted "BLAHA ADDITION", Wichita, Kansas, and that the accompanying plat is a true and correct exhibit of the property surveyed, described as beginning at a point 134.6 feet east and 420 feet north of the SW corner of the SE 1/4 of the NE 1/4 of Section 31, T26S, R1E of the 6th P.M., Sedgwick County, Kansas; thence easterly, parallel with the south line of said NE 1/4, 175 feet; thence northerly, parallel with the west line of the SE 1/4 of said NE 1/4, to the center of the Little Arkansas River; thence northwesterly, along the center of said River, to a point 134.6 feet east of the west line of the SE 1/4 of said NE 1/4; thence southerly, parallel with said west line, to the point of beginning.

Date Aug. 2, 1982 Baughman Company, P.A.

John E. Lundblade Surveyor  
John E. Lundblade

Know all men by these presents, that we the undersigned, have caused the land described in the surveyors certificate to be platted into lots and a street to be known as "BLAHA ADDITION", Wichita, Kansas. The easements are hereby granted as indicated for the construction and maintenance of public utilities. The street is hereby dedicated to and for the use of the public. The drainage easement is hereby granted for drainage and riverbank maintenance purposes. No structure shall be built within the drainage easement, nor shall any change of grade be made without the permission of the Wichita-Valley Center Flood Control Office or their successors of office. No building shall be constructed below Elev. 127.0 (city datum).

Joseph R. Blaha Barbara L. Blaha  
Joseph R. Blaha Barbara L. Blaha

State of Kansas, ss. The foregoing instrument was acknowledged before me this 20<sup>th</sup> day of September, 1982, by Joseph R. Blaha and Barbara L. Blaha, his wife.

Mark A. Savoy Notary Public  
Mark A. Savoy  
My Commission Expires 12 May 1984

Mark A. Savoy Notary Public  
Mark A. Savoy

RI 4-30

RI 4-30

12-3-1-01

R-1 4-30

RI 4-30

C-1 3-21

10.00