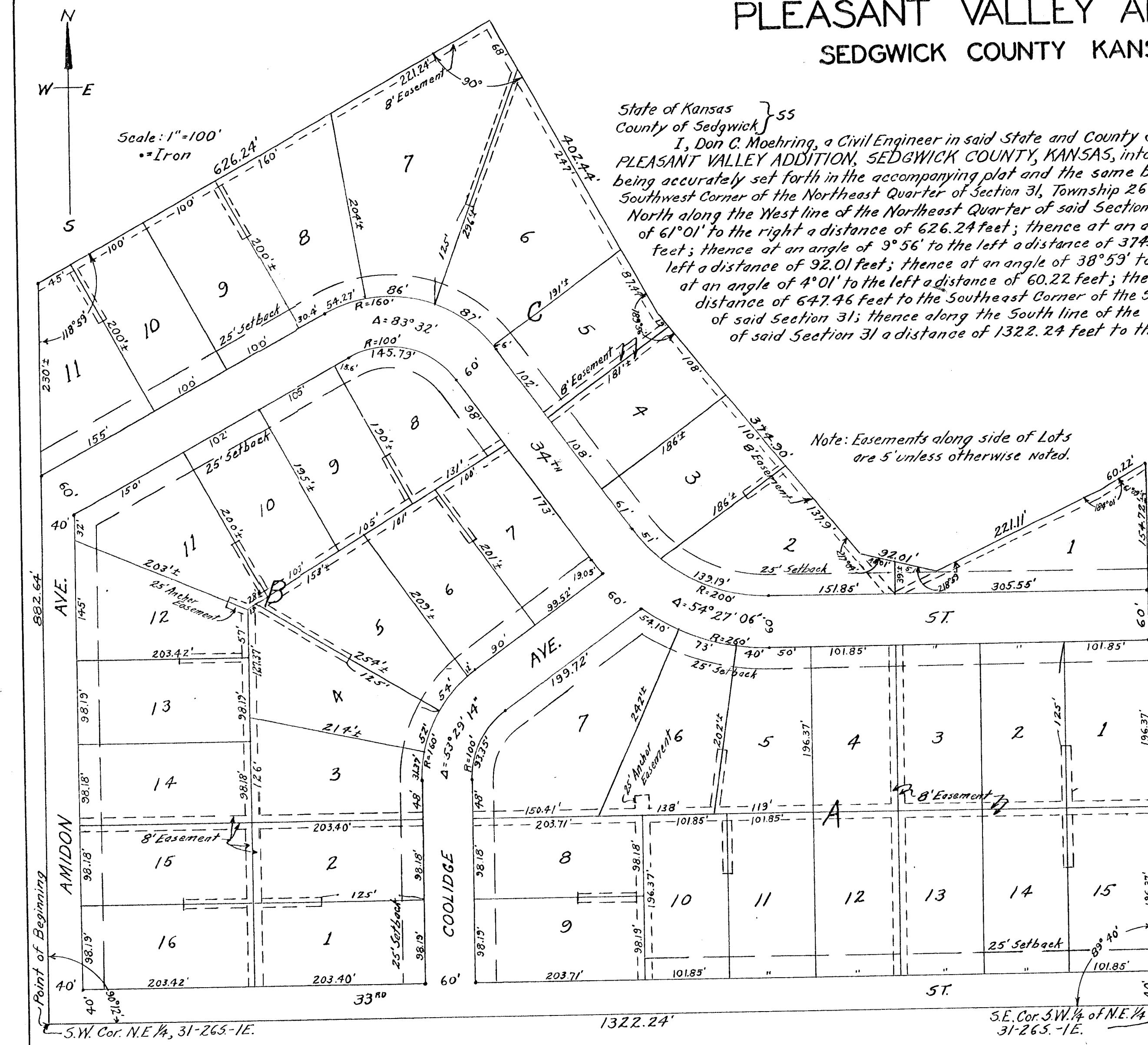


# PLEASANT VALLEY ADDITION SEDGWICK COUNTY KANSAS



State of Kansas }  
County of Sedgwick } ss  
I, Don C. Moehring, a Civil Engineer in said State and County do hereby certify that I have surveyed and plotted PLEASANT VALLEY ADDITION, SEDGWICK COUNTY, KANSAS, into Blocks, Lots, Streets, and Avenues, the same being accurately set forth in the accompanying plat and the same being described as follows: Beginning at the Southwest Corner of the Northeast Quarter of Section 31, Township 26 South, Range 1 East of the 6<sup>th</sup> PM; thence North along the West line of the Northeast Quarter of said Section 31, a distance of 8132.64 feet; thence at an angle of 61° 01' to the right a distance of 626.24 feet; thence at an angle of 90° to the right a distance of 402.44 feet; thence at an angle of 3° 56' to the left a distance of 374.90 feet; thence at an angle of 37° 04' to the left a distance of 92.01 feet; thence at an angle of 38° 53' to the left a distance of 221.11 feet; thence at an angle of 4° 01' to the left a distance of 60.22 feet; thence at an angle of 118° 51' to the right a distance of 647.46 feet to the Southeast Corner of the Southwest Quarter of the Northeast Quarter of said Section 31; thence along the South line of the Southwest Quarter of the Northeast Quarter of said Section 31 a distance of 1322.24 feet to the point of beginning.

*Don C. Moehring, C.E.*  
Don C. Moehring, C.E.  
Consulting Civil Engineer

Know all men by these presents, that we, the undersigned property owners of the land as above set forth in the Civil Engineers certificate have caused the same to be surveyed and plotted into Blocks, Lots, Streets, and Avenues, the same to be known as Pleasant Valley Addition, Sedgwick County, Kansas. The Streets and Avenues are hereby dedicated to and for the use of the Public, and easements for the construction and maintenance of Public Utilities as indicated on the accompanying plat are hereby granted.

*Richard Steck*  
*June D. Steck*

State of Kansas }  
County of Sedgwick } ss  
Be it remembered, that on this 24<sup>th</sup> day of Nov, 1952, before me, a Notary Public in and for said State and County, came Richard Steck and June D. Steck, his wife, to me personally known to be the same persons who executed the foregoing instrument of writing and duly acknowledged the same as their voluntary act and deed.

*Thomas L. Nelson*  
Notary Public

My Commission expires April 23, 1956

This plat of Pleasant Valley Addition, Sedgwick County, Kansas, has been submitted and considered by the City Planning Commission of the City of Wichita, Kansas, and is hereby transmitted to the Board of Commissioners of the City of Wichita, Kansas, with the recommendation that such plat be approved as proposed.

Dated this 22nd day of December, 1952  
The City Planning Commission of the City of Wichita, Kansas

*Francis B. Harney*, Chairman  
*J. Thomas*, Secretary

Approved by the Board of City Commissioners this 9 day of Dec, 1952

*Walt Keeler*, President  
*Ed*, City Clerk

Approved by the Board of County Commissioners this 26th day of DECEMBER, 1952

*Ed Schmeider*, County Clerk

Entered on transfer record this 27th day of DECEMBER, 1952

*Ed Schmeider*, County Clerk

State of Kansas }  
County of Sedgwick } ss

This is to certify that this instrument was filed for record in the Register of Deeds office on the 27 day of Dec, 1952, at 4:00 o'clock P.M. and is duly recorded.

*Ed Schmeider*, Register of Deeds  
*Ed*, Deputy

**PQ-6-11**

RES 11299 Page 112  
11/16 - M 402 0380