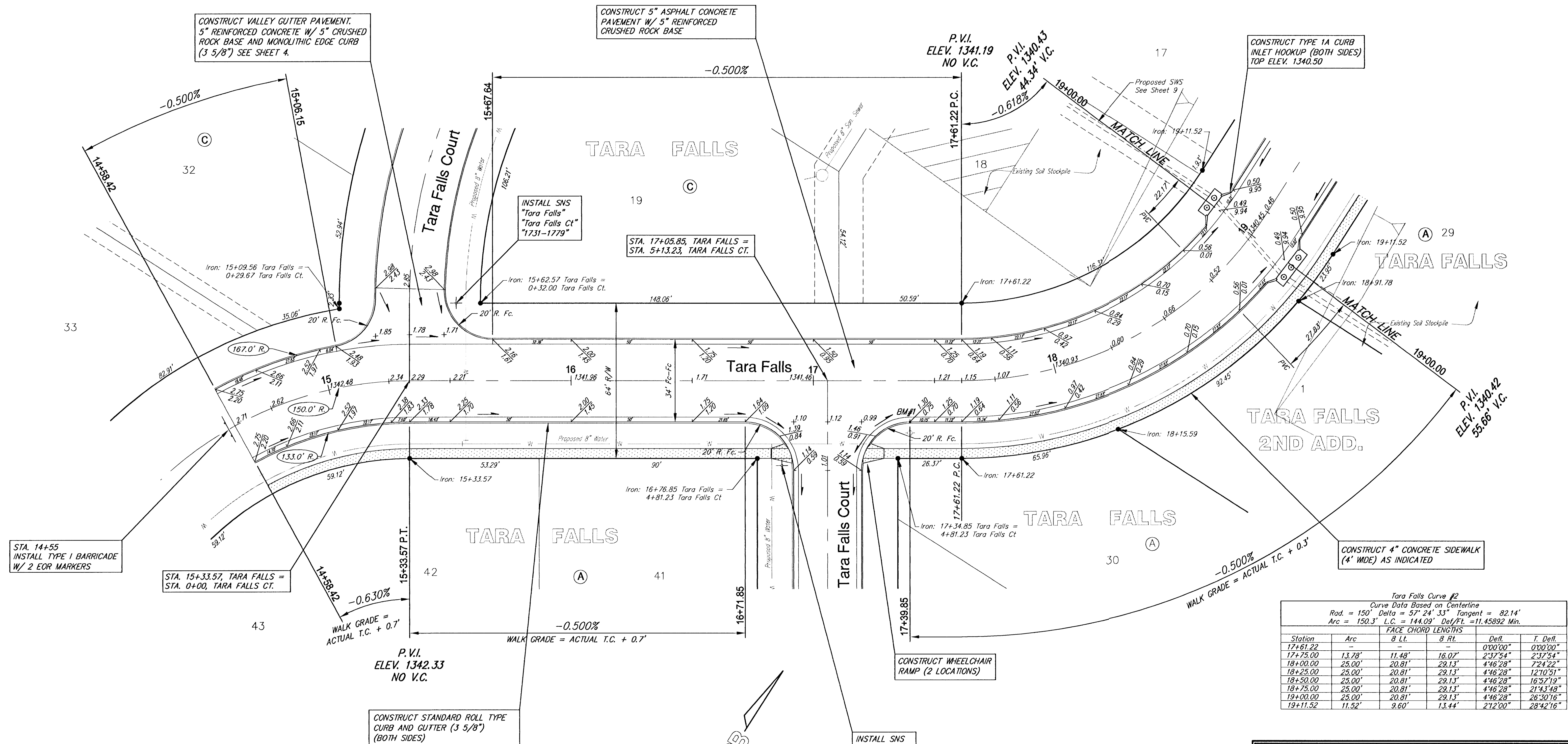


Subdivision Bench Marks

No.	Street and Station	From CL	Description	Elevation
1	Tara Falls, Sta. 17+40	17.50' Rt	N. End of N.E. Corner at Tara Falls & Tara Falls Ct (1802-1842) In Front of Fire Hydrant	

Subdivision Bench Marks shall be "Flat Survey Markers No. 8134-08 3" top diameter" provided by Kansas Blue Print Co., Inc. Bench mark installation cost to be subsidiary to curb & gutter.



Tara Falls Curve #1

Curve Data Based on Centerline
 Rad. = 150' Delta = 28° 42' 17" Tangent = 38.38'
 Arc = 75.15' L.C. = 74.37' Del/Ft. = 11.45897 Min.

Station	Arc	FACE CHORD LENGTHS		Defl.	T. Defl.
		8 Lt.	8 Rt.		
14+58.42	-	-	-	0°00'00"	0°00'00"
14+75.00	16.58'	19.33'	13.81'	3°00'59"	3°09'59"
15+00.00	25.00'	29.13'	20.81'	4°46'28"	7°56'28"
15+25.00	25.00'	29.13'	20.81'	4°46'28"	12°42'56"
15+33.57	8.57'	10.00'	7.14'	1°38'12"	14°21'08"

Tara Falls Curve #2

Curve Data Based on Centerline
 Rad. = 150' Delta = 57° 24' 33" Tangent = 82.14'
 Arc = 150.3' L.C. = 144.09' Del/Ft. = 11.45892 Min.

Station	Arc	FACE CHORD LENGTHS		Defl.	T. Defl.
		8 Lt.	8 Rt.		
17+61.22	-	-	-	0°00'00"	0°00'00"
17+75.00	13.78'	11.48'	16.07'	2°37'54"	2°37'54"
18+00.00	25.00'	20.81'	29.13'	4°46'28"	7°24'22"
18+25.00	25.00'	20.81'	29.13'	4°46'28"	12°10'51"
18+50.00	25.00'	20.81'	29.13'	4°46'28"	16°57'19"
18+75.00	25.00'	20.81'	29.13'	4°46'28"	21°43'48"
19+00.00	25.00'	20.81'	29.13'	4°46'28"	26°30'16"
19+11.52	11.52'	9.60'	13.44'	2°12'00"	28°42'16"

SCALE: 1" = 20'

● = IRON

NOTE: ROLL TYPE CURB AND GUTTER TO BE CONSTRUCTED ALONG PAVEMENT DEPICTED ON THIS SHEET

TARA FALLS PHASE 2 PAVING
TARA FALLS
WICHITA, SEDGWICK COUNTY, KANSAS

SRB 924 NORTH MAIN WICHITA, KANSAS 67203 www.srb1.com 316-264-8008 FAX 264-4621 E-mail: srb@srb1.com

SAVOY, RUGGLES & BOHM, P. A.
 ENGINEERING & SURVEYING

PROJECT NUMBER
 472-83374

DESIGN	DRAWN	UTILITY	REVIEW	DATE	REVISED
KWL	KWL			June 6, 2001	

DESIGNED BY: KWL
 DRAWN BY: KWL
 CHECKED BY: []
 DATE: June 6, 2001
 SHEET 5 OF 27