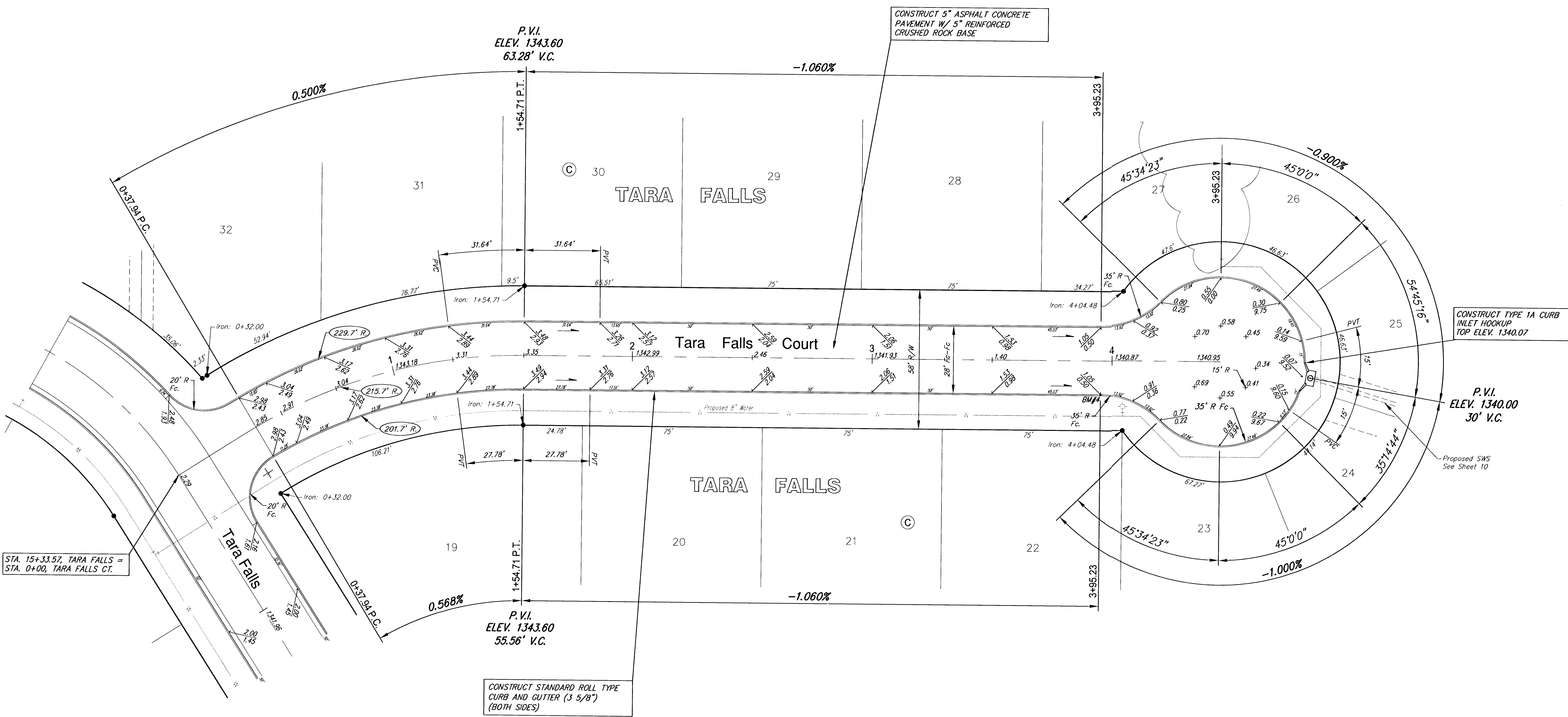


Subdivision Bench Marks

| No. | Street and Station | From CL | Description | Elevation |
|-----|-----------------------------|-----------|---|-----------|
| 4 | Tara Falls Court, Sta. 3+95 | 14.50' Rt | S. End of E. Cul-de-Sac Return, 397'± N of Int. of E. of Tara Falls & Tara Falls Ct (1731-1779) | |



STA. 15+33.57, TARA FALLS = STA. 0+00, TARA FALLS CT.

CONSTRUCT STANDARD ROLL TYPE CURB AND GUTTER (3 5/8") (BOTH SIDES)

CONSTRUCT 5" ASPHALT CONCRETE PAVEMENT W/ 5" REINFORCED CRUSHED ROCK BASE

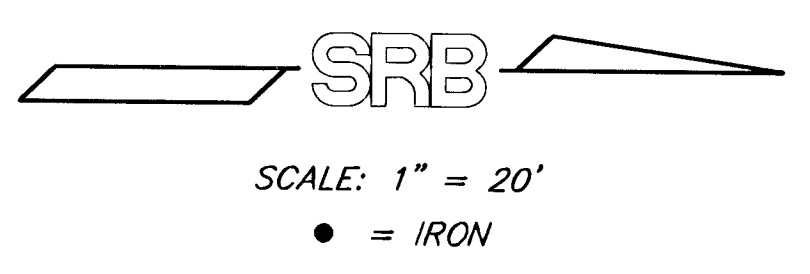
CONSTRUCT TYPE 1A CURB INLET HOOKUP TOP ELEV. 1340.07

P.V.I. ELEV. 1340.00 30' V.C.

Proposed SWS See Sheet 10

Tara Falls Court Curve #2
Curve Data Based on Centerline
Rad. = 215.72' Delta = 31°00' 51" Tangent = 59.85'
Arc = 116.77' L.C. = 115.35' Def/Ft. = 7.96801 Min.

| Station | Arc | FACE CHORD LENGTHS | | Defl. | T. Defl. |
|---------|--------|--------------------|--------|----------|-----------|
| | | 8 Lt. | 8 Rt. | | |
| 0+37.94 | - | - | - | 0°00'00" | 0°00'00" |
| 0+50.00 | 12.06' | 13.29' | 10.83' | 1°36'05" | 1°36'05" |
| 0+75.00 | 25.00' | 27.53' | 22.44' | 3°19'12" | 4°55'17" |
| 1+00.00 | 25.00' | 27.53' | 22.44' | 3°19'12" | 8°14'29" |
| 1+25.00 | 25.00' | 27.53' | 22.44' | 3°19'12" | 11°33'42" |
| 1+54.71 | 29.71' | 32.71' | 26.66' | 3°56'44" | 15°30'25" |



NOTE: ROLL TYPE CURB AND GUTTER TO BE CONSTRUCTED ALONG PAVEMENT DEPICTED ON THIS SHEET

**TARA FALLS PHASE 2 PAVING
TARA FALLS COURT
WICHITA, SEDGWICK COUNTY, KANSAS**

SRB 924 NORTH MAIN WICHITA, KANSAS 67203
316-264-8008 FAX 264-4621
www.srb1.com E-mail: srb@srb1.com

**SAVOY, RUGGLES & BOHM, P. A.
ENGINEERING & SURVEYING**

PROJECT NUMBER: 472-83374

DESIGN: KWL DRAWN: KWL UTILITY: REVIEW: DATE: June 1, 2001 REVISIONS:

SHEET 8 OF 27