

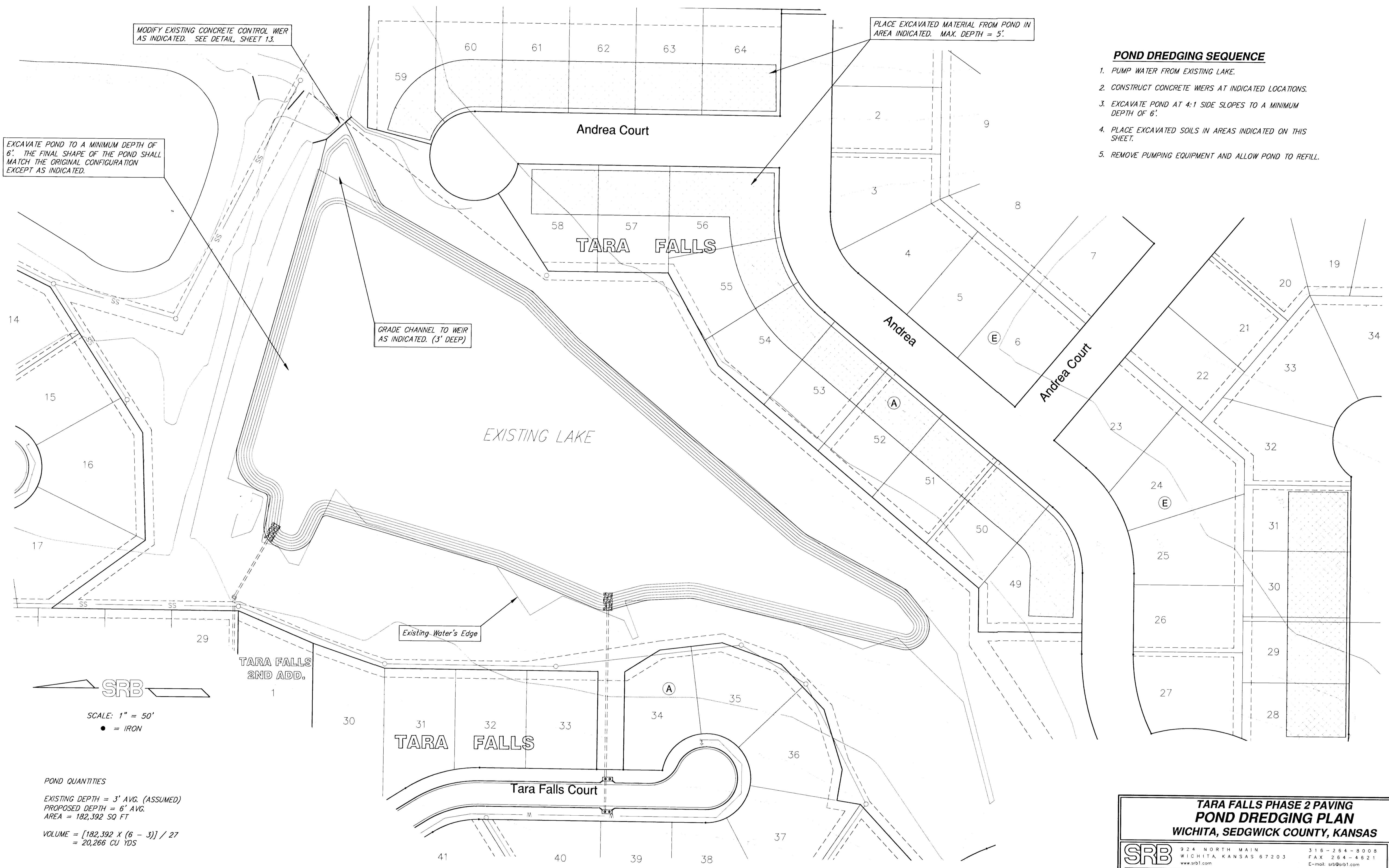
MODIFY EXISTING CONCRETE CONTROL WEIR AS INDICATED. SEE DETAIL, SHEET 13.

PLACE EXCAVATED MATERIAL FROM POND IN AREA INDICATED. MAX. DEPTH = 5'.

EXCAVATE POND TO A MINIMUM DEPTH OF 6'. THE FINAL SHAPE OF THE POND SHALL MATCH THE ORIGINAL CONFIGURATION EXCEPT AS INDICATED.

GRADE CHANNEL TO WEIR AS INDICATED. (3' DEEP)

- POND DREDGING SEQUENCE**
1. PUMP WATER FROM EXISTING LAKE.
 2. CONSTRUCT CONCRETE WEIRS AT INDICATED LOCATIONS.
 3. EXCAVATE POND AT 4:1 SIDE SLOPES TO A MINIMUM DEPTH OF 6'.
 4. PLACE EXCAVATED SOILS IN AREAS INDICATED ON THIS SHEET.
 5. REMOVE PUMPING EQUIPMENT AND ALLOW POND TO REFILL.



SRB
SCALE: 1" = 50'
● = IRON

POND QUANTITIES
EXISTING DEPTH = 3' AVG. (ASSUMED)
PROPOSED DEPTH = 6' AVG.
AREA = 182,392 SQ FT
VOLUME = [182,392 X (6 - 3)] / 27
= 20,266 CU YDS

**TARA FALLS PHASE 2 PAVING
POND DREDGING PLAN
WICHITA, SEDGWICK COUNTY, KANSAS**

SRB	924 NORTH MAIN WICHITA, KANSAS 67203 www.srb1.com	316-264-8008 FAX 264-4621 E-mail: srb@srb1.com
SAVOY, RUGGLES & BOHM, P. A. ENGINEERING & SURVEYING		
PROJECT NUMBER 472-83374		
DESIGN KWL	DRAWN KWL	UTILITY UTILITY
REVIEW REVIEW	DATE June 1, 2001	REVISED REVISED

SRB JOB 1881E
SHEET 12 OF 27