

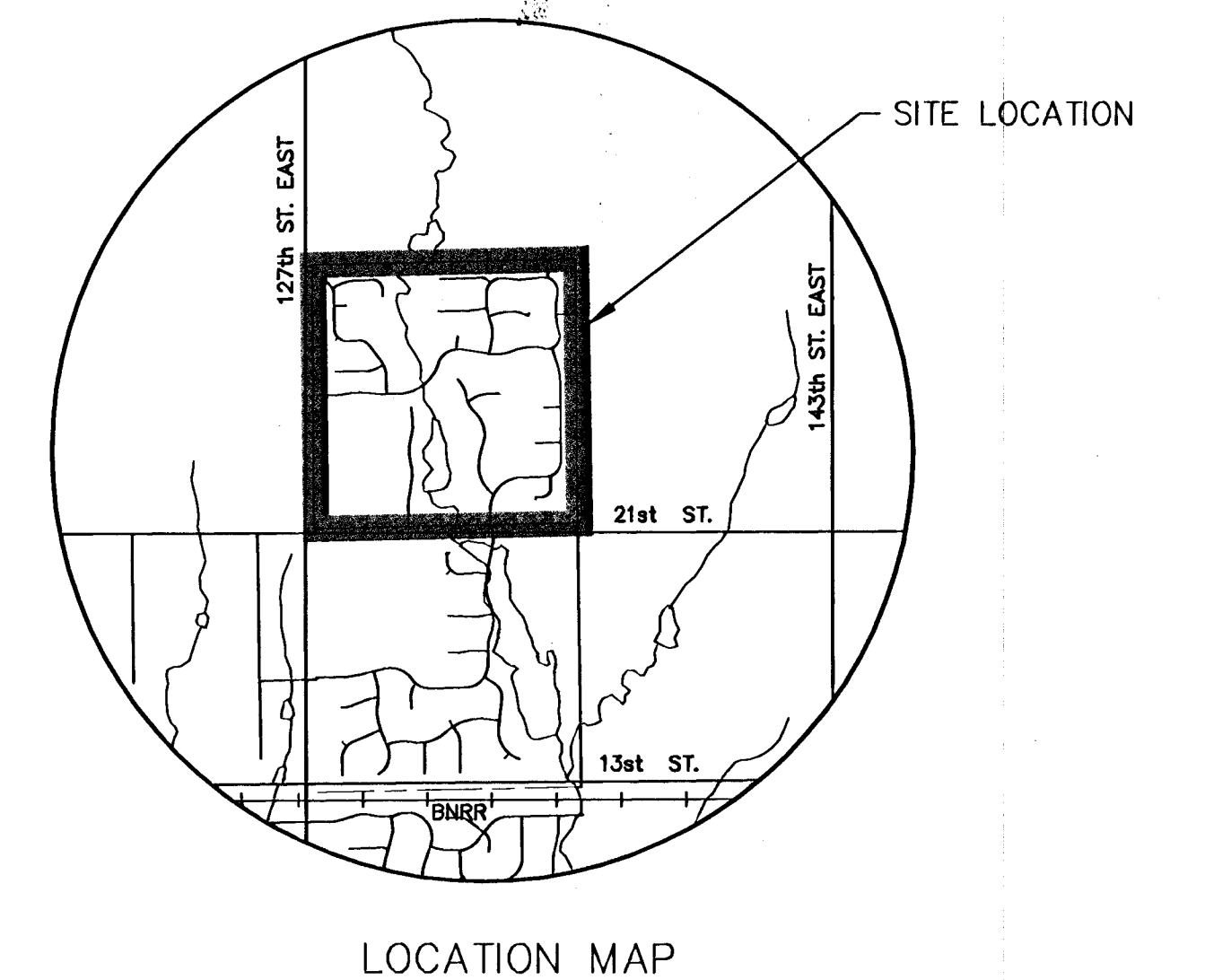
PAVING STREETS AND INCIDENTAL DRAINAGE IN  
**HAWTHORNE ADDITION**

AN ADDITION TO THE CITY OF WICHITA  
 SEDGWICK COUNTY, KANSAS  
**WILLIAMSGATE ENTRY PHASE**  
**PROJECT NO. 472-83644**

NEIL D. CABLE, CITY ENGINEER  
**OCA 765774**

Williamsgate from the North line  
 of 21st Street North to the  
 West line of Lot 56, Block 6.

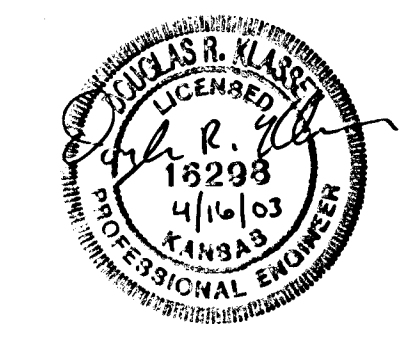
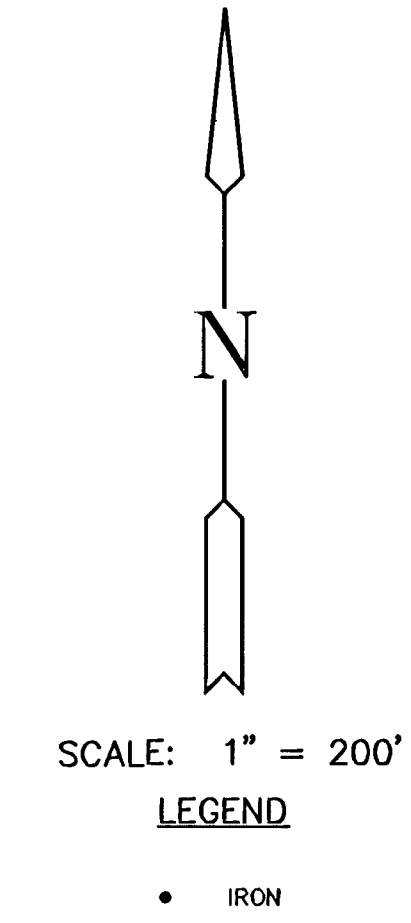
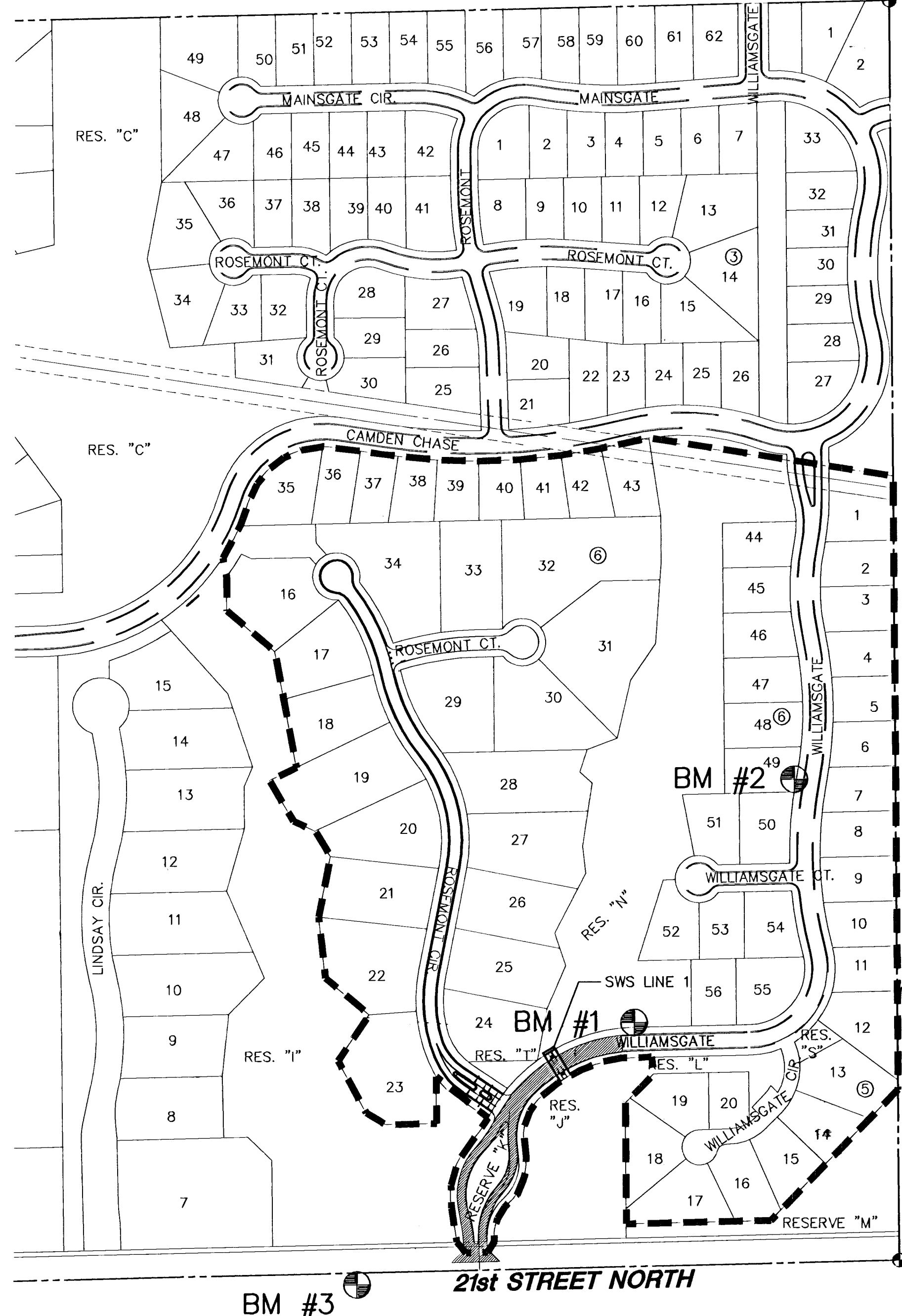
NE. COR., SW 1/4 SEC. 2,  
 T27S, R2E, 6TH P.M.,  
 FND. 5/8" BAR W/ TTLS  
 BRASS CAP



**GENERAL NOTES**

- UNLESS SHOWN OR STATED OTHERWISE ON THESE DRAWINGS, MATERIALS AND CONSTRUCTION SHALL BE IN ACCORDANCE WITH CITY OF WICHITA CONCRETE PAVEMENT AND ASPHALTIC CONCRETE PAVEMENT SPECIFICATIONS.
- THE CONTRACTOR SHALL BE RESPONSIBLE FOR PRESERVING PROPERTY IRONS. THE CONTRACTOR WILL BE REQUIRED TO RE-ESTABLISH ANY PROPERTY IRONS WHICH ARE DAMAGED OR DESTROYED BY HIS CONSTRUCTION OPERATIONS. SUCH IRONS SHALL BE RE-ESTABLISHED BY A LICENSED LAND SURVEYOR IN ACCORDANCE WITH STATE LAWS.
- TRANSITION CURB FROM FULL HEIGHT COMBINATION CURB AND GUTTER TO ROLL TYPE COMBINATION CURB AND GUTTER IS TO BE PAID AS BID FOR LINEAL FEET COMBINED CURB AND GUTTER (3 5/8" ROLL).
- EXISTING UTILITIES AND THEIR LOCATIONS, AS SHOWN ON THE PLANS REPRESENT THE BEST INFORMATION OBTAINABLE FOR DESIGN. LOCATION INFORMATION HAS BEEN OBTAINED FROM THE VARIOUS UTILITY COMPANIES AND IS EITHER FROM COMPANY RECORD DRAWINGS OR COMPANY PROVIDED FIELD LOCATIONS. THE PLAN LOCATIONS SHOWN ARE NOT GUARANTEED. ADDITIONAL EXISTING UTILITIES MAY ALSO BE ENCOUNTERED.
- CONTRACTOR WILL BE REQUIRED TO PROVIDE A MINIMUM ADVANCE NOTICE OF FORTY-EIGHT (48) HOURS TO UTILITY COMPANIES PRIOR TO STARTING ANY EXCAVATION AS FOLLOWS:  
  
 KANSAS ONE-CALL 1-800-344-7233  
 OR 687-2470 (LOCAL WCHITA)  
  
 THE CONTRACTOR MUST NOTIFY THE FOLLOWING IN CASE OF AN EMERGENCY:  
  
 COX COMMUNICATION 263-0661  
 WESTAR ENERGY 261-6512  
 SBC 1-800-870-8390  
 CITY OF WICHITA WATER & SEWER 262-6000  
 COOPERATIVE REFINERY PIPELINE 1-800-982-4112  
 KANSAS GAS SERVICE 832-3101
- RUBBLE FROM THE REMOVAL OF MISCELLANEOUS STRUCTURES AND EXCESS EXCAVATION WHICH IS TO BE WASTED SHALL BE DISPOSED OF ON SITES TO BE PROVIDED BY THE CONTRACTOR. THESE SITES SHALL BE APPROVED BY THE ENGINEER AS TO SUITABILITY, APPEARANCE AND SITE LOCATION. LOCATIONS THAT, IN THE OPINION OF THE ENGINEER, WILL LEAVE AN UNSIGHTLY APPEARANCE WILL NOT BE APPROVED. ALL DISPOSAL SITES MUST BE APPROVED BY THE KANSAS DEPARTMENT OF HEALTH AND ENVIRONMENT. MATERIAL EITHER STOCKPILED OR DISPOSED OF IN A FLOOD PLAIN WOULD REQUIRE A KANSAS STATE BOARD OF AGRICULTURE PERMIT. ANY MATERIAL DUMPED IN WATERS OF THE UNITED STATES OR WETLANDS IS SUBJECT TO U.S. CORPS OF ENGINEERS PERMITTING REGULATIONS. ANY MATERIAL BURIED OR STOCKPILED BEYOND APPROVED CONSTRUCTION LIMITS WOULD REQUIRE ADDITIONAL ARCHAEOLOGICAL INVESTIGATIONS UNLESS BURIED IN A PREVIOUSLY APPROVED BORROW LOCATION.
- A SAW CUT OF AT LEAST ONE-HALF THE DEPTH OF THE EXISTING SURFACE COURSES OR ONE-FOURTH THE DEPTH OF THE EXISTING TOTAL PAVEMENT THICKNESS SHALL BE PROVIDED AT LOCATIONS WHERE PROPOSED CONSTRUCTION ABUTS AN EXISTING SURFACE OR PAVEMENT FOR WHICH PARTIAL REMOVAL OF THAT SURFACE OR PAVEMENT IS REQUIRED. SAW JOINT TO FACILITATE REMOVAL WITHIN THREE (3) FEET OF EXISTING JOINTS WILL NOT BE PERMITTED AND FOR SUCH INSTANCES THE LIMITS OF REMOVAL SHALL EXTEND TO THE EXISTING JOINT. SUCH SAW CUTS WILL NOT BE PAID FOR DIRECTLY AND THIS COST SHALL BE CONSIDERED AS SUBSIDIARY TO THE REMOVAL OF SURFACE OR PAVEMENT.
- ALL AREAS DISTURBED SHALL BE SEEDED AS FOLLOWS:  
 K-31 FESCUE AT A RATE OF 300 LBS/ACRE.
- ANY TREE THAT MUST HAVE BRANCHES REMOVED SHALL BE TRIMMED WITH A SHARP INSTRUMENT/TOOL THAT IS INTENDED FOR SUCH OPERATIONS. GAIN APPROVAL FROM MKEC BEFORE REMOVING BRANCHES FROM ANY TREE. KNOCKING BRANCHES OFF WITH A BACKHOE OR OTHER SIMILAR MACHINES IS NOT ACCEPTABLE! SEE DETAIL ON SHEET 4.
- ROUGH GRADING FOR THE SHEETS HAS BEEN COMPLETED WITH THE MASS GRADING PROJECT TO WITHIN 0.1'. SOME FINE GRADING WILL BE REQUIRED WITH THIS PROJECT. THIS SHALL BE CONSIDERED SUBSIDIARY TO BID ITEM FOR ASPHALTIC CONCRETE PAVEMENT.
- MKEC WILL PROVIDE AS-BUILT DRAWINGS OF THE SITE GRADING PROJECT PRIOR TO BEGINNING CONSTRUCTION OF THIS PROJECT.

LENGTH OF PROJECT	
WILLIAMSGATE	650 FT.
EARTHWORK SUMMARY	
EXCAVATION	0 C.Y.
LOOSE FILL	0 C.Y.
COMPACTED FILL	0 C.Y.



SE. COR., SW 1/4 SEC. 2,  
 T27S, R2E, 6TH P.M.,  
 FND. 3/4" PIPE

**INDEX TO DRAWINGS**

SHEET NO.	DESCRIPTION
1	TITLE SHEET
2-4	PAVING DETAILS
5	SIGN DETAILS
6	DRYSTACK WALL & TREE PROTECTION DETAILS
7-8	PAVING PLANS
9	SWS LINE 1
10-12	RCB DETAILS
13-15	HEADWALL & HANDRAIL DETAILS
16	FINISH GRADING
17	ADD-ALTERNATE #3 DETAILS
18-21	BMP DETAILS
22-26	CROSS SECTIONS
27-28	FINAL PLAT

**BENCHMARKS**

- BM #1 "I" POST 10'+/- N. PC IRON ON S. SIDE OF RES. "N". ELEV.=1354.78
- BM #2 "I" POST 5' +/- W. PC IRON ON EAST LINE OF LOT 49, BLOCK 6. ELEV.=1364.24
- BM #3 "□" CUT ON WEST END OF HDWL OF RCB UNDER 21ST ST. NORTH. 1506'+/-E. & 25' +/- S. OF SW COR 2-27S-2E. ELEV.=1351.77

H:\CIVIL\02167\DWG\PHASE\WILLIAMSGATE\2167\_e13.dwg 09/25/2002 01:19:05 PM CST

**HAWTHORNE ADDITION**  
**WILLIAMSGATE ENTRY**  
 PROJECT NAME

**TITLE SHEET**  
 SHEET TITLE

DESIGN BY: BH DRAWN BY: DMU CHECKED BY: DRK

DATE: APRIL 2003 DRAWING NAME: 02167 SHEET / OF: 1 / 28

411 N. WEBB ROAD  
 WICHITA, KS. 67206  
 316-684-9600