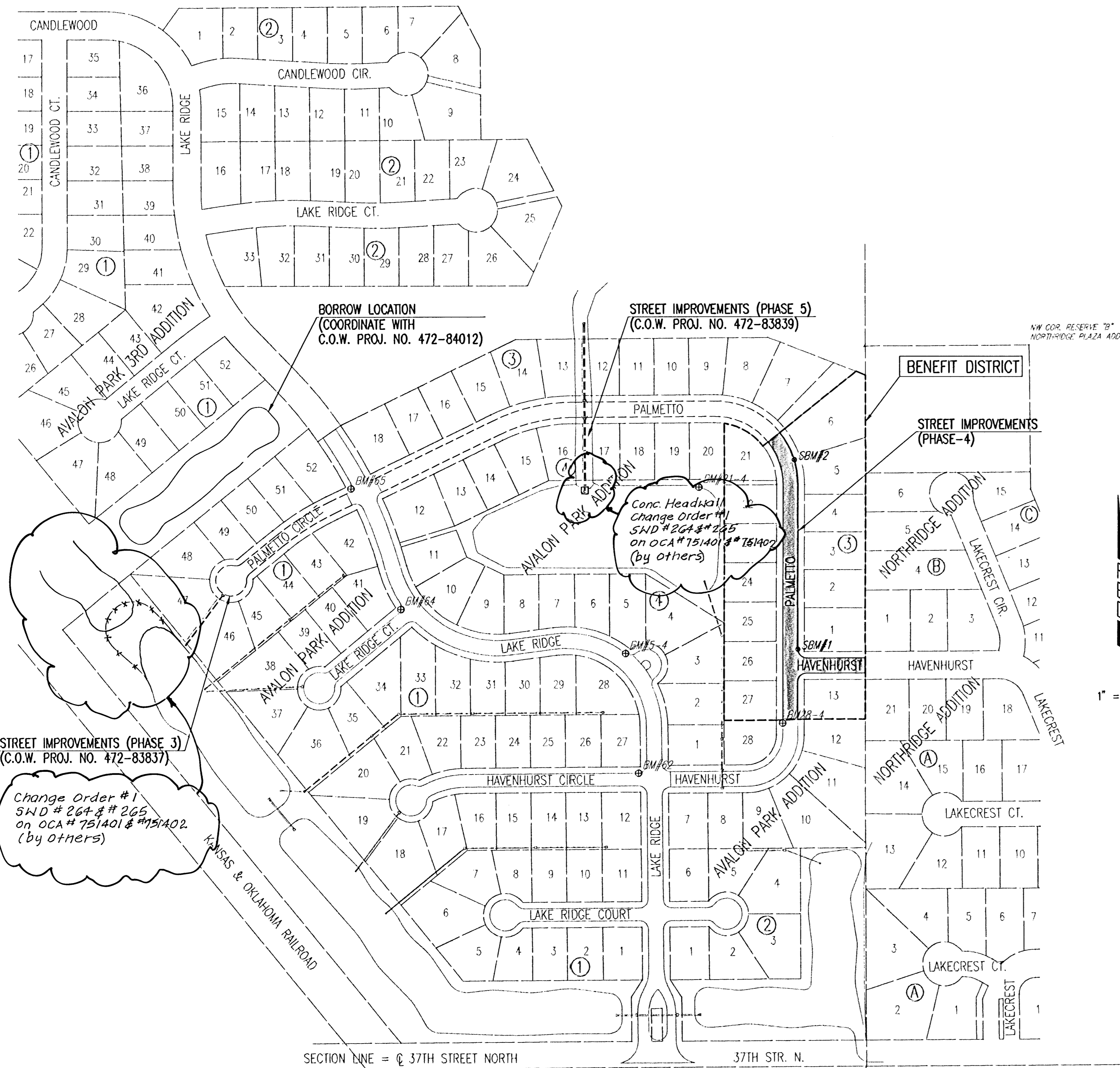


DSNR: BLB OPER: BUS SCALE: 1"=150.00
 Q:\2005\050559\000\050559-000-C-KEYMAP 06-13-2005 12:54:51 am



STREET IMPROVEMENTS (PHASE 3)
 (C.O.W. PROJ. NO. 472-83837)

Change Order #1
 SWD # 264 & # 265
 on OCA # 751401 & # 751402
 (by others)

BORROW LOCATION
 (COORDINATE WITH
 C.O.W. PROJ. NO. 472-84012)

STREET IMPROVEMENTS (PHASE 5)
 (C.O.W. PROJ. NO. 472-83839)

BENEFIT DISTRICT

STREET IMPROVEMENTS
 (PHASE-4)

GENERAL NOTES

- UNDERGROUND UTILITY SERVICE LINES AND OVERHEAD UTILITY POLE LINES ARE TO BE ADJUSTED AS NECESSARY BY OTHERS PRIOR TO CONSTRUCTION UNLESS THE PLANS SPECIFICALLY CALL FOR THEIR ADJUSTMENT BY THE CONTRACTOR. EXISTING UTILITIES AND THEIR LOCATION, AS SHOWN ON THE PLANS, REPRESENT THE BEST INFORMATION OBTAINABLE FOR DESIGN. LOCATION INFORMATION HAS BEEN OBTAINED FROM THE VARIOUS UTILITY COMPANIES AND IS EITHER FROM COMPANY RECORD DRAWINGS OR COMPANY PROVIDED FIELD LOCATIONS. THE CONTRACTOR WILL BE REQUIRED TO WORK AROUND EXISTING UTILITIES WITHIN THE RIGHT-OF-WAY WHICH DO NOT CONFLICT WITH PROPOSED CONSTRUCTION.
- TREES AND SHRUBS IN PUBLIC RIGHT-OF-WAY WHICH ARE IN DIRECT CONFLICT WITH PROPOSED NEW CONSTRUCTION SHALL BE REMOVED BY THE CONTRACTOR, WITH THE ENGINEER'S APPROVAL. TREES AND SHRUBS WHICH ARE NOT IN DIRECT CONFLICT WITH PROPOSED NEW CONSTRUCTION SHALL BE SAVED AND PROTECTED FROM DAMAGE.
- RUBBLE FROM THE REMOVAL OF MISCELLANEOUS STRUCTURES SHALL BE DISPOSED OF ON SITES TO BE PROVIDED BY THE CONTRACTOR AND APPROVED AS NOTED BELOW.

ALL DISPOSAL SITES MUST BE APPROVED BY THE KANSAS DEPARTMENT OF HEALTH AND ENVIRONMENT. MATERIAL EITHER STOCKPILED OR DISPOSED OF IN A FLOOD PLAIN WOULD REQUIRE A KANSAS STATE BOARD OF AGRICULTURE PERMIT. ANY MATERIAL DUMPED IN WATERS OF THE UNITED STATES OR WETLANDS IS SUBJECT TO U.S. CORPS OF ENGINEERS PERMITTING REGULATIONS. ANY MATERIAL BURIED OR STOCKPILED BEYOND APPROVED CONSTRUCTION LIMITS WOULD REQUIRE ADDITIONAL ARCHEOLOGICAL INVESTIGATIONS UNLESS BURIED IN A PREVIOUSLY APPROVED BORROW LOCATION.
- CONTRACTOR SHALL SATISFY HIMSELF OF SURFACE AND SUBSURFACE CONDITIONS PRIOR TO BIDDING.
- TEMPORARY SURFACING MATERIAL (ROCK, ASPHALT, ETC.) MAY HAVE BEEN PLACED WITHIN STREET RIGHTS-OF-WAY FOR HAUL ROADS AND TEMPORARY ACCESS. CONTRACTOR SHALL FIELD VERIFY EXISTING CONDITIONS TO DETERMINE EXTENT, IF ANY, OF SUCH SURFACING. CONTRACTOR SHALL REMOVE SAID TEMPORARY SURFACING IN THE SAME MANNER AS NOTED ABOVE FOR RUBBLE. THIS REMOVAL SHALL BE SUBSIDIARY TO "EXCAVATION".
- CONTRACTOR SHALL PROVIDE A MINIMUM SEVENTY-TWO (72) HOUR ADVANCE NOTICE (EXCLUDING WEEKENDS AND HOLIDAYS) PRIOR TO BEGINNING ANY EXCAVATION, TO KANSAS ONE-CALL SYSTEM, A UTILITY LOCATION SERVICE, AT (316) 687-2470 TO REQUEST THE FOLLOWING UTILITY COMPANIES TO LOCATE ALL EXISTING LINES WITHIN THE PROJECT AREA: K.G.S. GAS, WESTAR ENERGY, SBC, COX COMMUNICATIONS, CITY OF WICHITA SEWER MAINTENANCE AND CITY OF WICHITA WATER DEPARTMENT.
- THE CONTRACTOR SHALL BE RESPONSIBLE FOR PRESERVING PROPERTY IRONS. THE CONTRACTOR WILL BE REQUIRED TO RE-ESTABLISH ANY PROPERTY IRONS WHICH ARE DAMAGED OR DESTROYED OR COVERED BY 12" OR MORE OF FILL BY HIS CONSTRUCTION OPERATIONS. SUCH IRONS SHALL BE RE-ESTABLISHED BY A LICENSED LAND SURVEYOR IN ACCORDANCE WITH STATE LAWS.
- THE WATER DEPARTMENT SHALL FIELD LOCATE WATER VALVES ONE TIME DURING CONSTRUCTION WHEN REQUESTED BY THE CONTRACTOR. IT SHALL BE THE CONTRACTOR'S RESPONSIBILITY TO PRESERVE SUCH FIELD LOCATIONS DURING THE CONSTRUCTION PROCESS. WATER VALVES, WATER VALVE BOXES OR FIRE HYDRANTS DAMAGED DURING CONSTRUCTION SHALL BE REPAIRED BY THE CONTRACTOR AT HIS OWN EXPENSE.
- THE CONTRACTOR SHALL ADJUST WATER VALVE BOXES AS DIRECTED BY THE ENGINEER. THIS WORK TO BE SUBSIDIARY TO OTHER BID ITEMS.
- INLET HOOKUPS AND INLET PROTECTION SHALL BE BID PER EACH REGARDLESS OF INLET SIZE.
- THIS PROJECT DOES NOT INCLUDE ANY PROVISIONS FOR CONSTRUCTION OF DRIVEWAYS.
- THE CONTRACTOR SHALL APPLY TEMPORARY SEED AND MULCH TO ALL UNPAVED AREAS DISTURBED BY HIS CONSTRUCTION OPERATIONS IN ACCORDANCE WITH THE STANDARD SPECIFICATIONS. SEED SHALL BE ANNUAL RYE APPLIED AT THE RATE OF 4 LBS. PER 1,000 SQUARE FEET. MULCH SHALL BE PRAIRIE HAY APPLIED AT THE RATE OF 15 BALES PER ACRE. THIS WORK SHALL BE PAID FOR AT THE CONTRACT LUMP SUM PRICE BID FOR "TEMPORARY PROJECT SEEDING".

- EROSION CONTROL (BMP'S)
 THE CONTRACTOR SHALL INSTALL AND/OR MAINTAIN EROSION CONTROL METHODS AS SPECIFIED ON SHEET 12. THE FOLLOWING QUANTITIES ARE ESTIMATED, AND SHOULD BE CONSIDERED THE MINIMUM EFFORT REQUIRED. INSTALLATION OF THESE BMP'S DOES NOT RELIEVE THE CONTRACTOR OF THE RESPONSIBILITY OF ABATING SOIL EROSION.

CONSTRUCTION ENTRANCE 1 EACH
 BACK OF CURB PROTECTION 1,569 L.F.

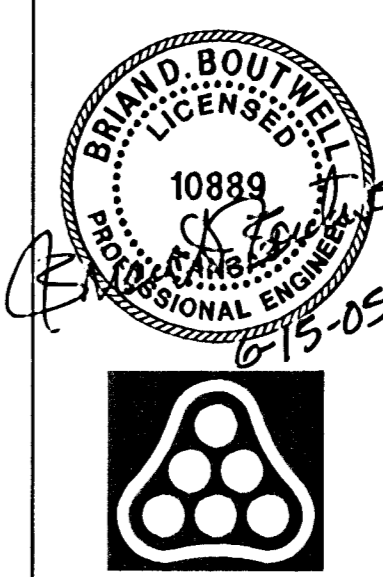
BENCHMARKS

City of Wichita Vertical Datum

- BM #62 - Chiseled Square on top of curb at West curb return at NW corner Lake Ridge and Havenhurst Circle. Elev.=150.54
- BM #64 - Chiseled Square on top of curb at midpoint of curve at NW corner Lake Ridge and Lake Ridge Court. Elev.=152.50
- BM #65 - Chiseled Square on top of curb at midpoint of curve at NW corner Lake Ridge and Palmetto Circle. Elev.=150.58
- BM #5-4 - Chiseled Square on top of curb, Northeast side of Lake Ridge, South corner of Lot 3, Block 4, Avalon Park. Elev.=152.85
- BM #21-4 - Top of Tee Post, flush with ground, top of embankment at Northeast corner of Pond, Southwest corner of Lot 21, Block 4, Avalon Park. Elev.=146.43
- BM #28-4 - Chiseled Square on top of Curb and 10 feet, more or less, South of the Northeast corner of Lot 28, Block 4, Avalon Park. Elev.=151.24

S.E. Corner SW 1/4,
 Sec. 28, Twp 26S, R-1-W
 Found 5/8" Rebar

BLB
 02.02.06
RECORD DRAWING



No.	Revision	By	Date
	AVALON PARK-PHASE 4		
KEY MAP AND GENERAL NOTES			
JAMES L. ARMOUR, P.E.-CITY ENGINEER CITY OF WICHITA PROJECT NO. 472-83838			
Professional Engineering Consultants, P.A. 303 S. TOPEKA • WICHITA, KANSAS 67202 316-262-2691 • FAX 316-262-3003			
Designed by	BDB, BLB	Job No.	35-05059-000
Drawn by	BJS	Date	February 2005
			SH. 2 of 22