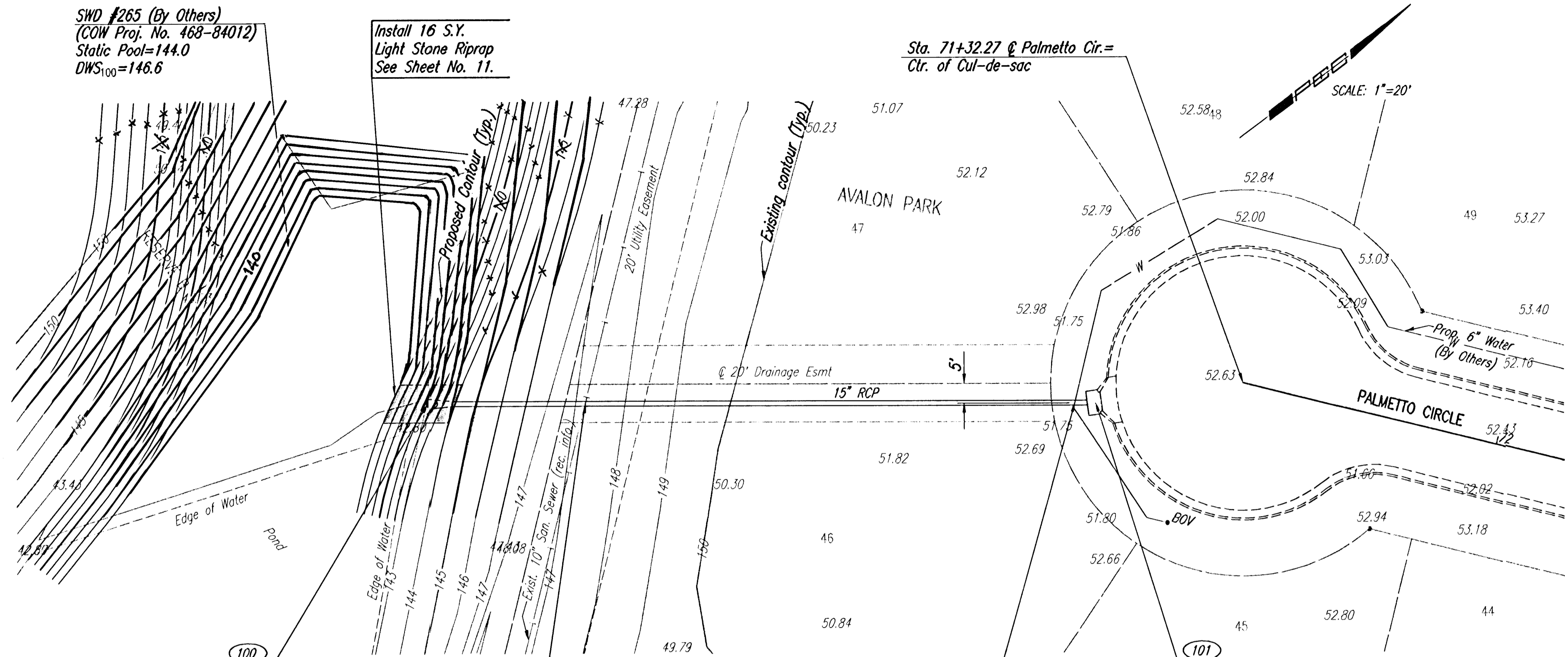


PLAN	CHECKED	CHECKED
BY		DATE

PROFILE	CHECKED	CHECKED
BY		DATE

DSNR: BLB OPER. BUS SCALE: 1"=20.00  
 Q:\2005\05160\000\05160-000-C-SWSLINE 06-13-2005 09:48:47 am



Sta. 8+26.6 SWS Line No. 1  
 Begin 15" RCP Construction  
 Install 173.4 L.F. 15" RCP (NE)  
 (Including End Section)

Excavate Only as Necessary for Installation  
 of RCP and Riprap. At Contractor's option,  
 timing of Riprap placement may be Coordinated  
 with SMD #265 Contractor.

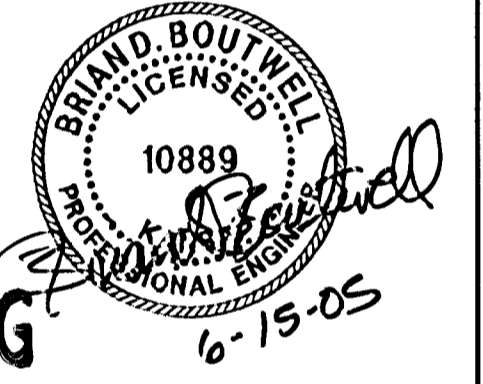
CAUTION !!!  
 Existing 10" San. Sewer  
 City of Wichita

CAUTION !!!  
 Proposed 6" Water  
 City of Wichita

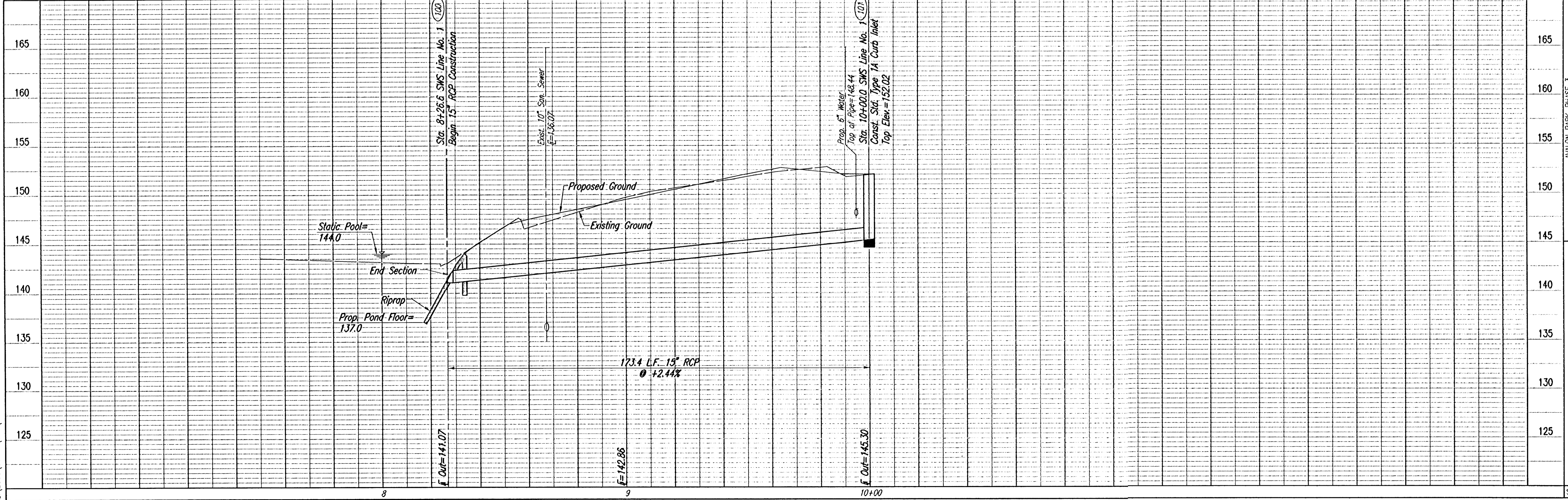
Sta. 10+00.0 SWS Line No. 1  
 Const. Std. Type 1A Curb Inlet  
 L=5'-0", W=3'-0"  
 Top Elev.=152.02  
 See Sheet No. 9.

COORDINATE LIST		
POINT	NORTH	EAST
100	10,955.2641	11,074.6436
101	11,094.1245	11,178.4961

(100) = COORDINATE POINT NO.  
 SEE SHEET NO. 3 FOR PLAT COORDINATES



RECORD DRAWING  
 6-15-05



AVALON PARK-PHASE 3  
**SWS LINE NO. 1**  
 JAMES L. ARMOUR, P.E.-CITY ENGINEER  
 CITY OF WICHITA PROJECT NO. 479-83837

Professional Engineering Consultants, P.A.  
 303 S. TOPEKA • WICHITA, KANSAS 67202  
 316-262-2691 • FAX 316-262-3003

Designed By: EDE, BLB  
 Drawn By: BJS  
 Job No.: 35-05160-000  
 Date: February 2005

Sheet 8 of 19