

BENCHMARKS:
 BM #1: "□" Cut in top of curb, east return of SE corner of Lotus & Parkridge.
 Elev. = 145.99 (City Datum)

BM #2: "X" Cut on walk at NW corner of Lot 1, Block F, Flat Creek Addition
 Elev. = 146.22 (City Datum)

BM #3: "□" Cut in top of curb at the NW corner of Lot 1, Block B, Hunter's Ridge Addition.
 Elev. = 146.63 (City Datum)

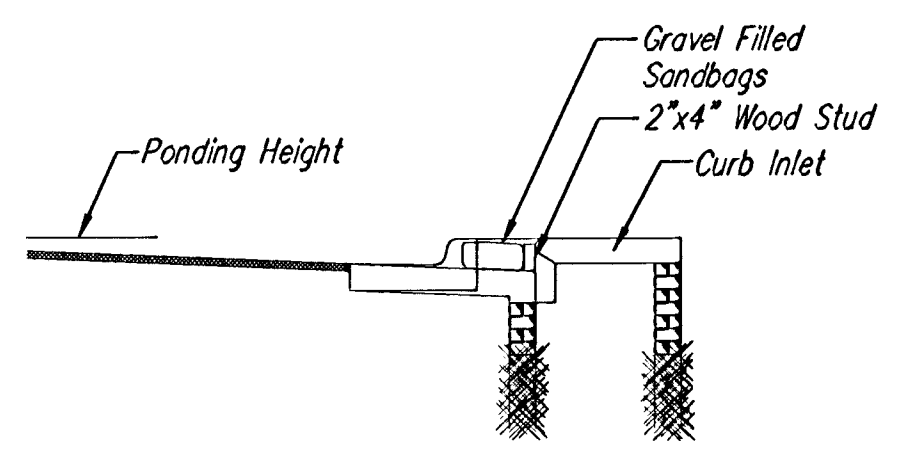
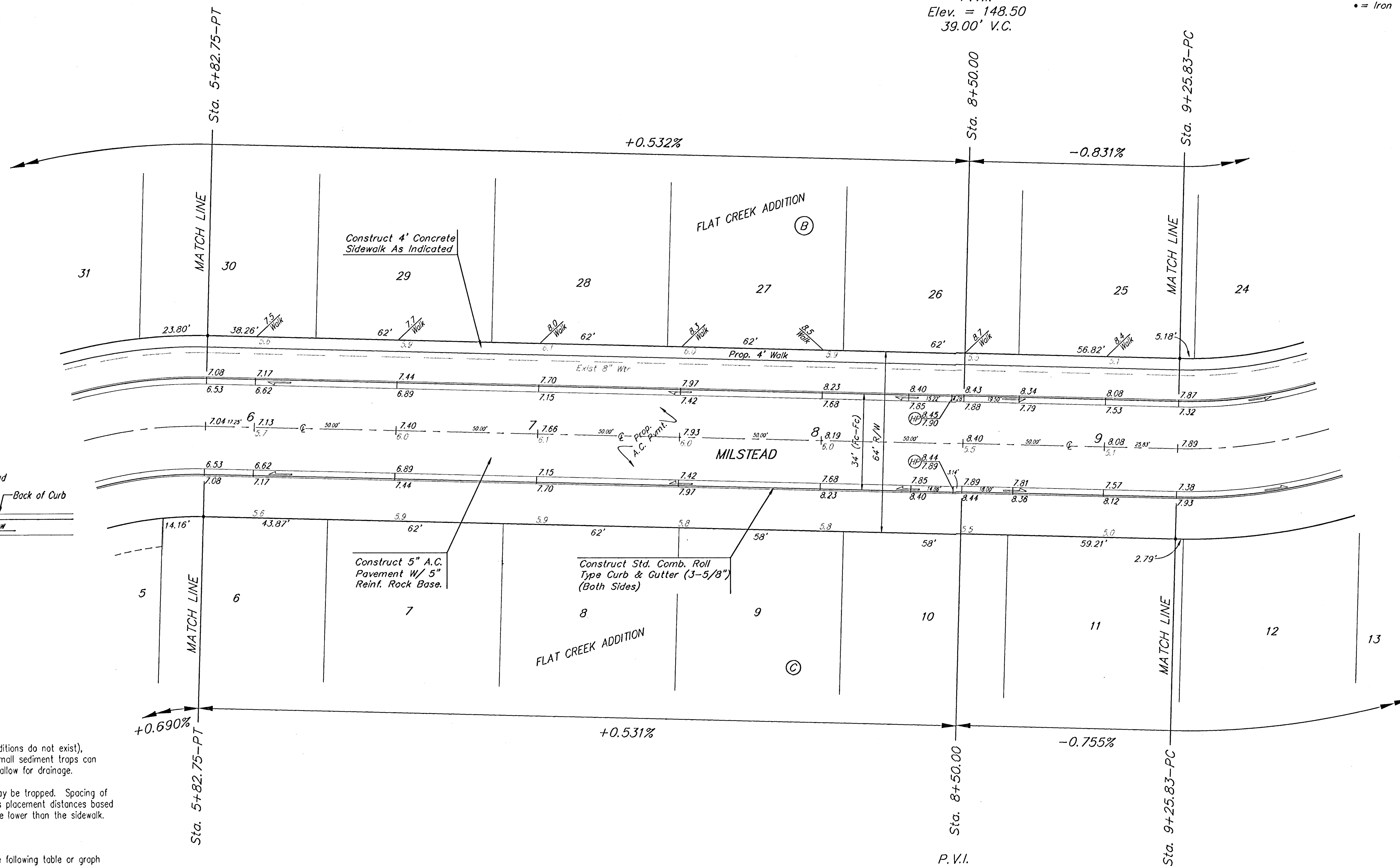


Scale: 1" = 20'
 • = Iron

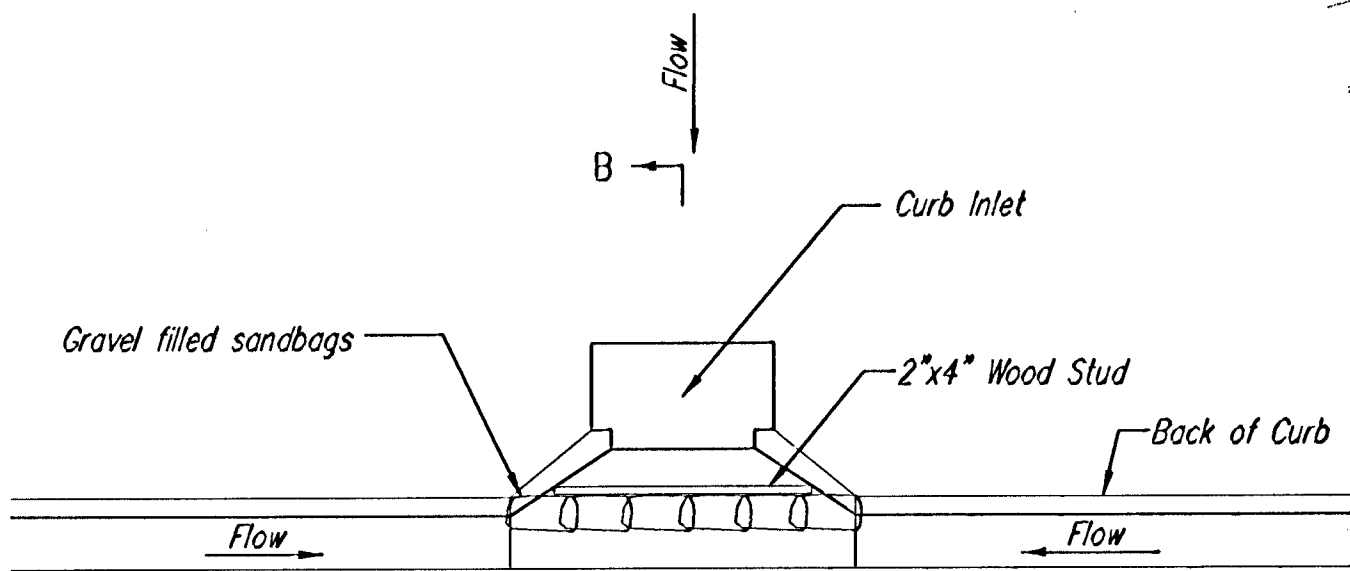
P.V.I.
 Elev. = 148.50
 39.00' V.C.

Sta. 8+50.00

P.V.I.
 Elev. = 148.50
 36.00' V.C.



SECTION B-B



CURB INLET SANDBAG FILTERS
 (INLET PROTECTION)

NOTE: Other types of curb inlet protection may be approved by the City so long as equal protection is provided.

CURB SEDIMENT TRAPS

When inlets are located on streets having a grade (i.e., sump conditions do not exist), installing gravel (or sand) bags in the gutter flow line to create small sediment traps can be considered. Gravel bags are recommended over sand bags to allow for drainage.

If the spacing between bags becomes too large, little sediment may be trapped. Spacing of bags should be completed using the table or graph that illustrates placement distances based upon street slope. When installed in the gutter, bag tops must be lower than the sidewalk.

Spacing:

Gravel bags are to be placed according to street grades using the following table or graph that appears below.

GRADE (%)	SPACING (FEET)
0.5	75
1.0	45
2.0	18
3.0	12
4.0	9
5.0	6

Maintenance:

Collected sediment shall be removed after every runoff event. Bags that are destroyed by vehicular traffic or through natural deterioration are to be immediately replaced.

NOTE: ROLL TYPE CURB & GUTTER TO BE CONSTRUCTED ON THE PAVEMENT SHOWN ON THIS SHEET. TOP OF CURB ELEVATIONS ARE GIVEN FOR FULL HEIGHT CURB.

FLAT CREEK ADDITION
MILSTEAD
 STA. 5+82.75 TO STA. 9+25.83

BAUGHMAN COMPANY P.A.
 ENGINEERING, SURVEYING, & PLANNING
 315-282-7271 • 315 ELLIS • WICHITA, KANSAS 67211

PROJECT NUMBER
472-63383

DESIGN: BP/TMG DRAWN: DC APPROVED: DATE: 08-01 SCALE: Noted

SHEET **7** OF **39**