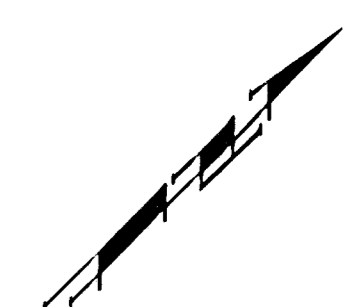


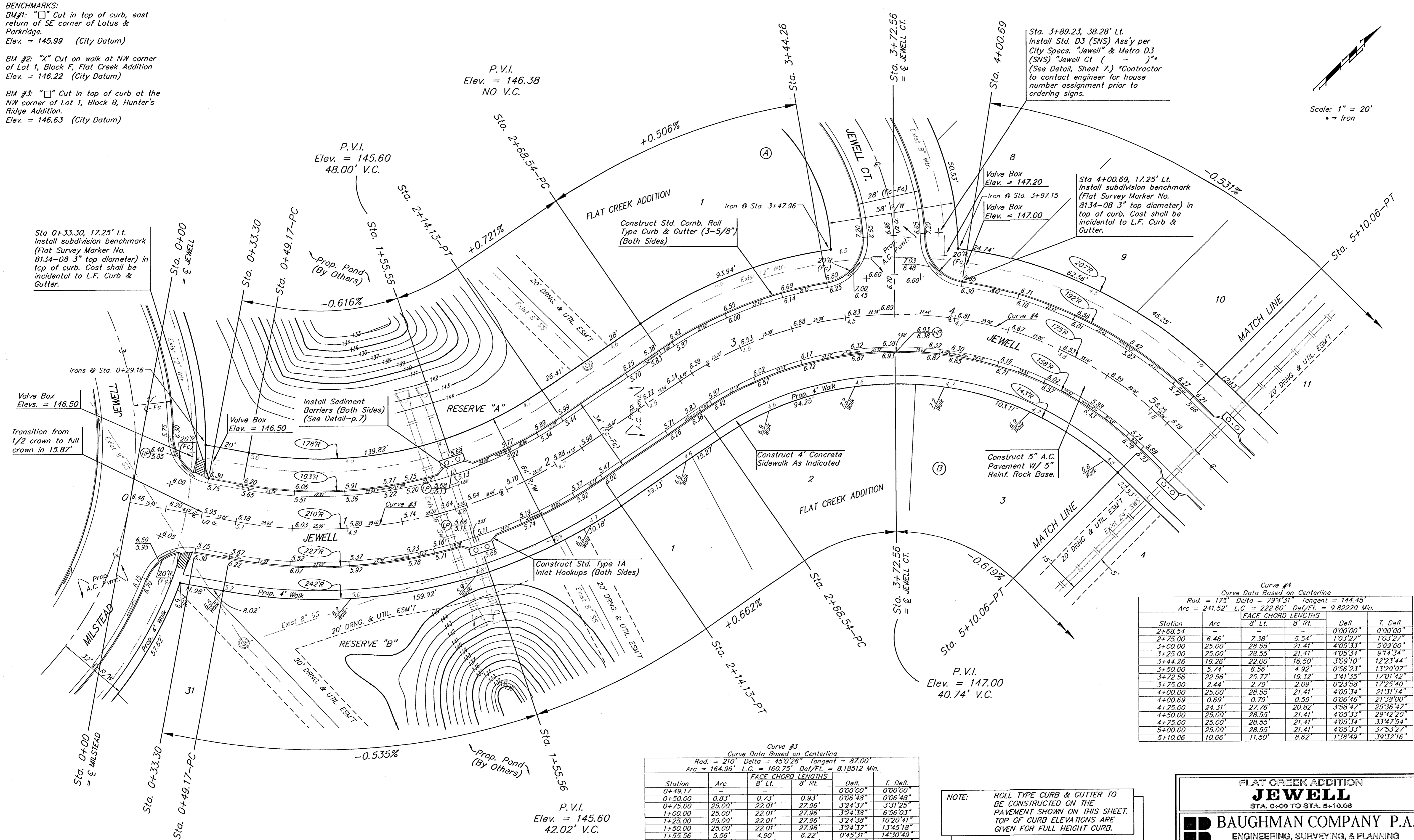
BENCHMARKS:
 BM #1: "□" Cut in top of curb, east return of SE corner of Lotus & Parkridge.
 Elev. = 145.99 (City Datum)

BM #2: "X" Cut on walk at NW corner of Lot 1, Block F, Flat Creek Addition
 Elev. = 146.22 (City Datum)

BM #3: "□" Cut in top of curb at the NW corner of Lot 1, Block B, Hunter's Ridge Addition.
 Elev. = 146.63 (City Datum)



Scale: 1" = 20'
 • = Iron



Curve #4
 Curve Data Based on Centerline
 Rad. = 175' Delta = 79°43' Tangent = 144.45'
 Arc = 241.52' L.C. = 222.80' Del/Flt. = 9.82220 Min.

Station	Arc	FACE CHORD LENGTHS		Defl.	T. Defl.
		8' Lt.	8' Rt.		
2+68.54	-	-	-	0°00'00"	0°00'00"
2+75.00	6.46'	7.39'	5.54'	1°03'27"	1°03'27"
3+00.00	25.00'	28.55'	21.41'	4°05'33"	5°09'00"
3+25.00	25.00'	28.55'	21.41'	4°05'34"	9°14'34"
3+44.26	19.26'	22.00'	16.50'	3°09'10"	12°23'44"
3+50.00	5.74'	6.56'	4.92'	0°56'23"	13°20'07"
3+72.56	22.56'	25.77'	19.32'	3°41'35"	17°01'42"
3+75.00	2.44'	2.79'	2.09'	0°23'58"	17°25'40"
4+00.00	25.00'	28.55'	21.41'	4°05'34"	21°31'14"
4+00.69	0.69'	0.79'	0.59'	0°06'46"	21°38'00"
4+25.00	24.31'	27.76'	20.82'	3°58'47"	25°36'47"
4+50.00	25.00'	28.55'	21.41'	4°05'33"	29°42'20"
4+75.00	25.00'	28.55'	21.41'	4°05'34"	33°47'54"
5+00.00	25.00'	28.55'	21.41'	4°05'33"	37°53'27"
5+10.06	10.06'	11.50'	8.62'	1°38'49"	39°32'16"

Curve #3
 Curve Data Based on Centerline
 Rad. = 210' Delta = 45°02' Tangent = 87.00'
 Arc = 164.96' L.C. = 160.75' Del/Flt. = 8.18512 Min.

Station	Arc	FACE CHORD LENGTHS		Defl.	T. Defl.
		8' Lt.	8' Rt.		
0+49.17	-	-	-	0°00'00"	0°00'00"
0+50.00	0.83'	0.73'	0.93'	0°06'48"	0°06'48"
0+75.00	25.00'	22.01'	27.96'	3°24'37"	3°31'25"
1+00.00	25.00'	22.01'	27.96'	3°24'38"	6°56'03"
1+25.00	25.00'	22.01'	27.96'	3°24'38"	10°20'41"
1+50.00	25.00'	22.01'	27.96'	3°24'37"	13°45'18"
1+55.56	5.56'	4.90'	6.22'	0°45'51"	14°30'49"
1+75.00	19.44'	17.12'	21.75'	2°39'07"	17°09'56"
2+00.00	25.00'	22.01'	27.96'	3°24'38"	20°34'34"
2+14.13	14.13'	12.45'	15.81'	1°55'39"	22°30'13"

NOTE: ROLL TYPE CURB & GUTTER TO BE CONSTRUCTED ON THE PAVEMENT SHOWN ON THIS SHEET. TOP OF CURB ELEVATIONS ARE GIVEN FOR FULL HEIGHT CURB.

FLAT CREEK ADDITION
JEWELL
 STA. 0+00 TO STA. 6+10.08

BAUGHMAN COMPANY P.A.
 ENGINEERING, SURVEYING, & PLANNING
 318-262-7271 • 315 ELLIS • WICHITA, KANSAS 67211

PROJECT NUMBER
472-83383

DESIGN: BP/TMG DRAWN: DC APPROVED: DATE: 08-01 SCALE: 1" = 20'
 SHEET 9 OF 39