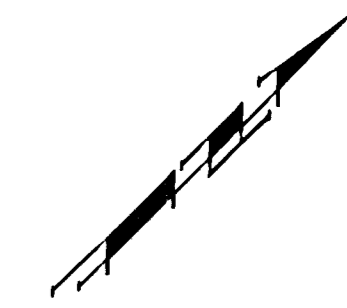


BENCHMARKS:
 BM #1: "□" Cut in top of curb, east
 return of SE corner of Lotus &
 Parkridge.
 Elev. = 145.99 (City Datum)

BM #2: "X" Cut on walk at NW corner
 of Lot 1, Block F, Flat Creek Addition
 Elev. = 146.22 (City Datum)

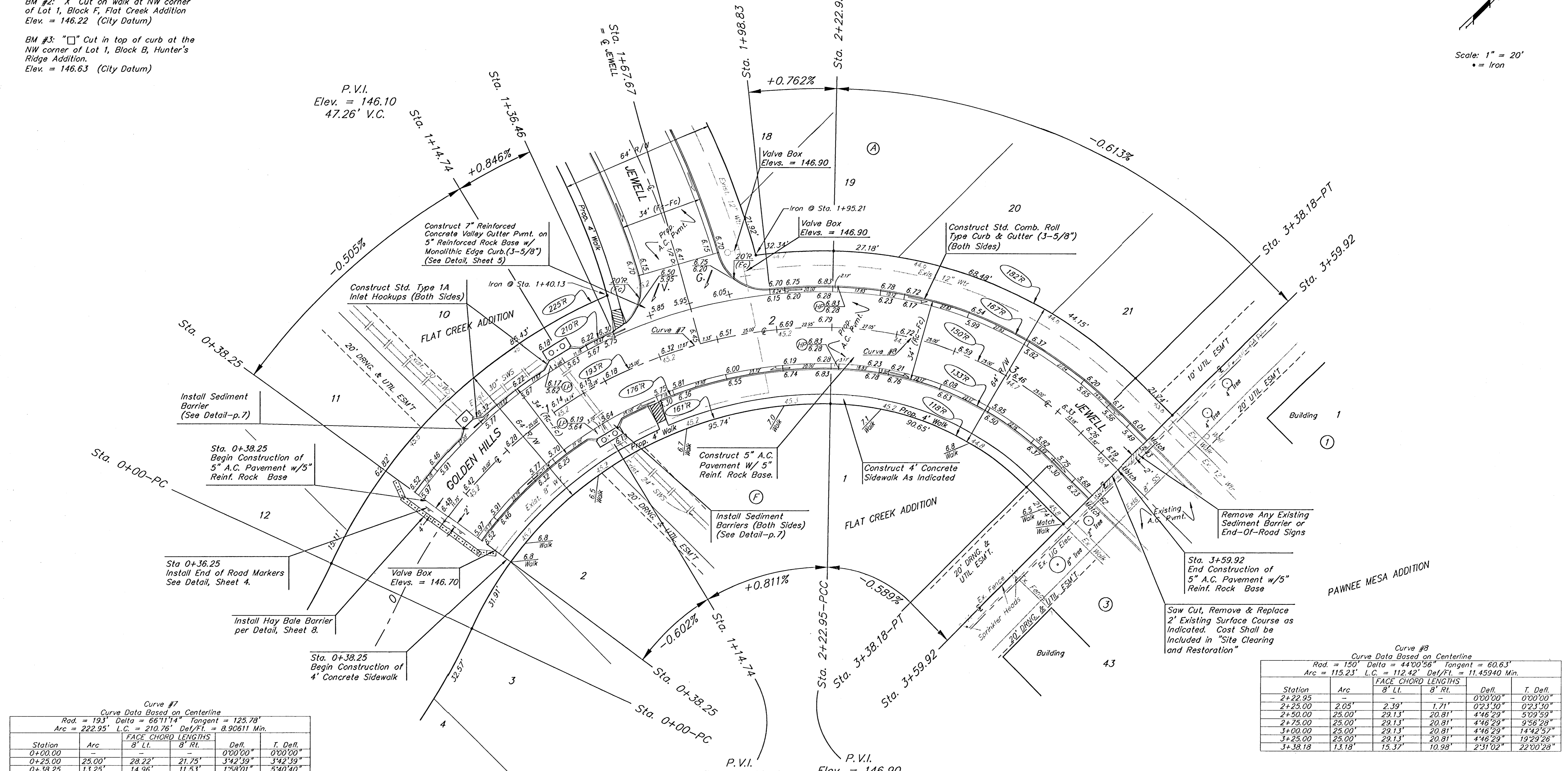
BM #3: "□" Cut in top of curb at the
 NW corner of Lot 1, Block B, Hunter's
 Ridge Addition.
 Elev. = 146.63 (City Datum)

P.V.I.
 Elev. = 146.90
 40.00' V.C.



Scale: 1" = 20'
 • = Iron

P.V.I.
 Elev. = 146.10
 47.26' V.C.



Curve #7
 Curve Data Based on Centerline
 Rad. = 193' Delta = 66°11'14" Tangent = 125.78'
 Arc = 222.95' L.C. = 210.76' Def/Ft. = 8.90611 Min.

Station	Arc	8' Lt.	8' Rt.	Defl.	T. Defl.
0+00.00	-	-	-	0°00'00"	0°00'00"
0+25.00	25.00'	28.22'	21.75'	3°42'39"	3°42'39"
0+38.25	13.25'	14.96'	11.53'	1°58'01"	5°40'40"
0+50.00	11.75'	13.27'	10.23'	1°44'58"	7°25'13"
0+75.00	25.00'	28.22'	21.75'	3°42'39"	11°07'57"
1+00.00	25.00'	28.22'	21.75'	3°42'40"	14°50'37"
1+14.74	14.74'	16.65'	12.83'	2°11'16"	17°01'53"
1+25.00	10.26'	11.59'	8.93'	1°31'23"	18°33'16"
1+36.46	11.46'	12.94'	9.97'	1°42'04"	20°15'20"
1+50.00	13.54'	15.29'	11.78'	2°00'35"	22°15'55"
1+67.67	17.67'	19.95'	15.38'	2°37'22"	24°53'17"
1+75.00	7.33'	8.28'	6.38'	1°05'17"	25°58'34"
1+98.83	23.83'	26.90'	20.73'	3°32'14"	29°30'48"
2+00.00	1.17'	1.32'	1.02'	0°10'25"	29°41'13"
2+22.95	22.95'	25.91'	19.97'	3°24'24"	33°05'37"

Curve #8
 Curve Data Based on Centerline
 Rad. = 150' Delta = 44°00'56" Tangent = 60.63'
 Arc = 115.23' L.C. = 112.42' Def/Ft. = 11.45940 Min.

Station	Arc	FACE CHORD LENGTHS		Defl.	T. Defl.
		8' Lt.	8' Rt.		
2+22.95	-	-	-	0°00'00"	0°00'00"
2+25.00	2.05'	2.39'	1.71'	0°23'50"	0°23'50"
2+50.00	25.00'	29.13'	20.81'	4°46'29"	5°09'59"
2+75.00	25.00'	29.13'	20.81'	4°46'29"	9°56'28"
3+00.00	25.00'	29.13'	20.81'	4°46'29"	14°42'57"
3+25.00	25.00'	29.13'	20.81'	4°46'29"	19°29'26"
3+38.18	13.18'	15.37'	10.98'	2°31'02"	22°00'28"

NOTE:
 ROLL TYPE CURB & GUTTER TO
 BE CONSTRUCTED ON THE
 PAVEMENT SHOWN ON THIS SHEET.
 TOP OF CURB ELEVATIONS ARE
 GIVEN FOR FULL HEIGHT CURB.

FLAT CREEK ADDITION
GOLDEN HILLS & JEWELL
 STA. 0+00 TO STA. 3+59.92

BAUGHMAN COMPANY P.A.
 ENGINEERING, SURVEYING, & PLANNING
 318-262-7271 • 315 ELLIS • WICHITA, KANSAS 67211

PROJECT NUMBER
472-93383

DESIGN BP/TMG DRAWN DC APPROVED DATE 08-01 SCALE Noted

SHEET
12
 OF
39