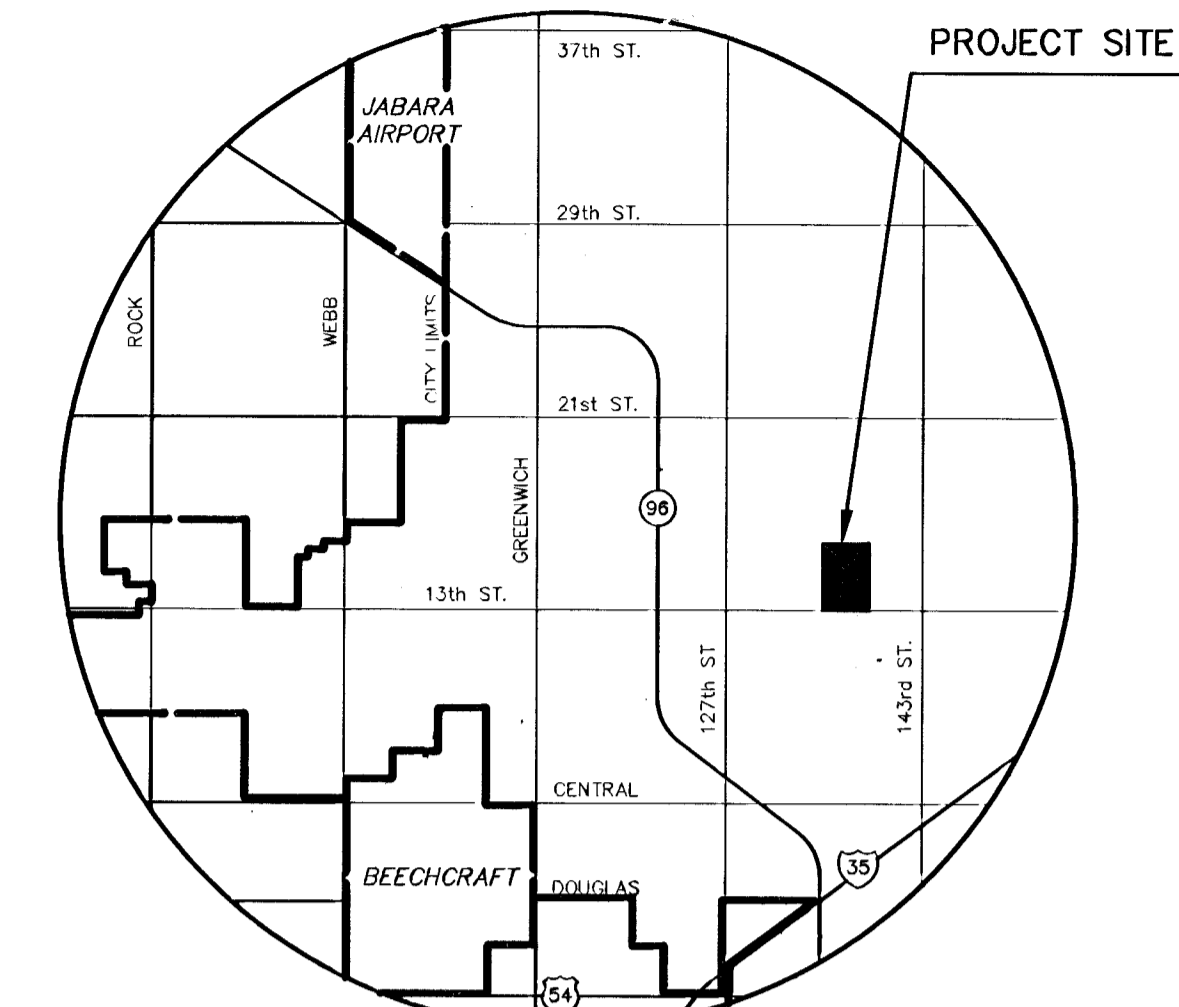


PAVING IMPROVEMENTS & INCIDENTAL DRAINAGE FOR
**ROCKY CREEK ADDITION
 HALLMARK PHASE 2**

AN ADDITION TO THE CITY OF WICHITA
 SEDGWICK COUNTY, KANSAS
PROJECT NO. 472-83035
 MICHAEL E. LINDEBAK, CITY ENGINEER
OCA 765680

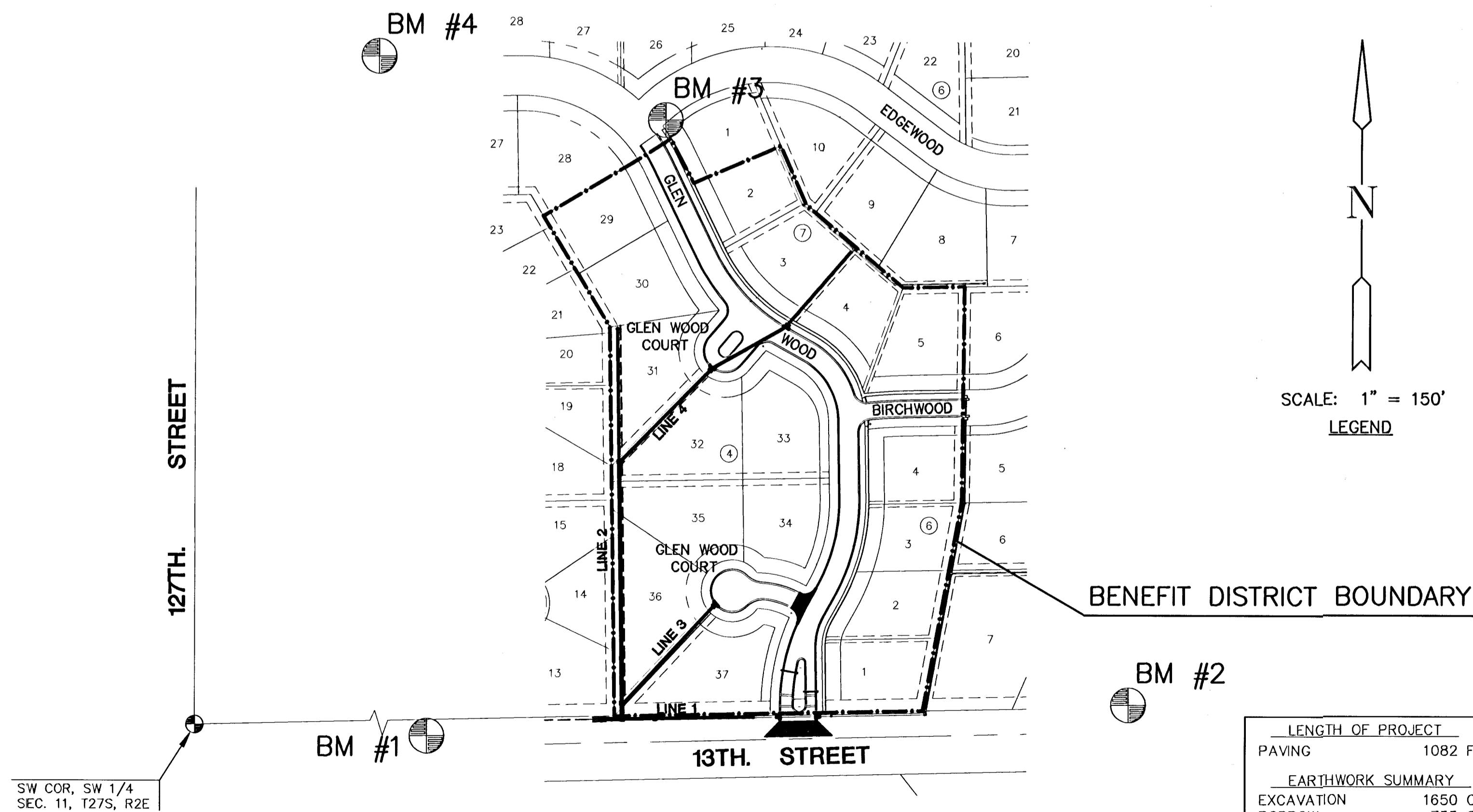


VICINITY MAP
 NOT TO SCALE

GENERAL NOTES

- UNLESS SHOWN OR STATED OTHERWISE ON THESE DRAWINGS, MATERIALS AND CONSTRUCTION SHALL BE IN ACCORDANCE WITH CITY OF WICHITA CONCRETE PAVEMENT AND ASPHALTIC CONCRETE PAVEMENT SPECIFICATIONS.
 - THE CONTRACTOR SHALL BE RESPONSIBLE FOR PRESERVING PROPERTY IRONS. THE CONTRACTOR WILL BE REQUIRED TO RE-ESTABLISH ANY PROPERTY IRONS WHICH ARE DAMAGED OR DESTROYED BY HIS CONSTRUCTION OPERATIONS. SUCH IRONS SHALL BE RE-ESTABLISHED BY A LICENSED LAND SURVEYOR IN ACCORDANCE WITH STATE LAWS.
 - TRANSITION CURB FROM FULL HEIGHT COMBINATION CURB AND GUTTER TO ROLL TYPE COMBINATION CURB AND GUTTER IS TO BE PAID AS BID FOR LINEAL FEET COMBINED CURB AND GUTTER (3 5/8" ROLL).
 - EXISTING UTILITIES AND THEIR LOCATIONS, AS SHOWN ON THE PLANS REPRESENT THE BEST INFORMATION OBTAINABLE FOR DESIGN. LOCATION INFORMATION HAS BEEN OBTAINED FROM THE VARIOUS UTILITY COMPANIES AND IS EITHER FROM COMPANY RECORD DRAWINGS OR COMPANY PROVIDED FIELD LOCATIONS. THE PLAN LOCATIONS SHOWN ARE NOT GUARANTEED. ADDITIONAL EXISTING UTILITIES MAY ALSO BE ENCOUNTERED.
 - CONTRACTOR WILL BE REQUIRED TO PROVIDE A MINIMUM ADVANCE NOTICE OF FORTY-EIGHT (48) HOURS TO UTILITY COMPANIES PRIOR TO STARTING ANY EXCAVATION AS FOLLOWS:
 KANSAS ONE-CALL 1-800-344-7233
 OR 687-2470 (LOCAL WICHITA)
- THE CONTRACTOR MUST NOTIFY THE FOLLOWING IN CASE OF AN EMERGENCY:
- | | |
|--------------------------------------|----------------|
| SOUTHWESTERN BELL TELEPHONE COMPANY | 1-800-734-7590 |
| COX CABLEVISION | 262-0661 |
| KG&E (ELECTRIC) | 383-8600 |
| KANSAS GAS SERVICE | 383-8600 |
| CITY OF WICHITA WATER & SEWER MAINT. | 262-6000 |
| PEOPLES NATURAL GAS | 1-800-303-0357 |
- RUBBLE FROM THE REMOVAL OF MISCELLANEOUS STRUCTURES AND EXCESS EXCAVATION WHICH IS TO BE WASTED SHALL BE DISPOSED OF ON SITES TO BE PROVIDED BY THE CONTRACTOR. THESE SITES SHALL BE APPROVED BY THE ENGINEER AS TO SUITABILITY, APPEARANCE AND SITE LOCATION. LOCATIONS THAT, IN THE OPINION OF THE ENGINEER, WILL LEAVE AN UNSIGHTLY APPEARANCE WILL NOT BE APPROVED. ALL DISPOSAL SITES MUST BE APPROVED BY THE KANSAS DEPARTMENT OF HEALTH AND ENVIRONMENT. MATERIAL EITHER STOCKPILED OR DISPOSED OF IN A FLOOD PLAIN WOULD REQUIRE A KANSAS STATE BOARD OF AGRICULTURE PERMIT. ANY MATERIAL DUMPED IN WATERS OF THE UNITED STATES OR WETLANDS IS SUBJECT TO U.S. CORPS OF ENGINEERS PERMITTING REGULATIONS. ANY MATERIAL BURIED OR STOCKPILED BEYOND APPROVED CONSTRUCTION LIMITS WOULD REQUIRE ADDITIONAL ARCHAEOLOGICAL INVESTIGATIONS UNLESS BURIED IN A PREVIOUSLY APPROVED BORROW LOCATION.
 - THIS PROJECT INCLUDES A CERTAIN AMOUNT OF ROLL TYPE CURB CONSTRUCTION. ROLL CURBS SHALL BE DEPRESSED THROUGH ALL DRIVEWAY OPENINGS WHEN SUCH DRIVES ARE CONSTRUCTED AS A PART OF THE PROJECT. NO MORE THAN 2 DRIVES 20 FEET IN WIDTH OR EQUIVALENT COMBINATIONS THEREOF ARE TO BE CONSTRUCTED WITH THIS PROJECT.
 - A SAW CUT OF AT LEAST ONE-HALF THE DEPTH OF THE EXISTING SURFACE COURSES OR ONE-FOURTH THE DEPTH OF THE EXISTING TOTAL PAVEMENT THICKNESS SHALL BE PROVIDED AT LOCATIONS WHERE PROPOSED CONSTRUCTION ABUTS AN EXISTING SURFACE OR PAVEMENT FOR WHICH PARTIAL REMOVAL OF THAT SURFACE OR PAVEMENT IS REQUIRED. SAW JOINT TO FACILITATE REMOVAL WITHIN THREE (3) FEET OF EXISTING JOINTS WILL NOT BE PERMITTED AND FOR SUCH INSTANCES THE LIMITS OF REMOVAL SHALL EXTEND TO THE EXISTING JOINT. SUCH SAW CUTS WILL NOT BE PAID FOR DIRECTLY AND THIS COST SHALL BE CONSIDERED AS SUBSIDIARY TO THE REMOVAL OF SURFACE OR PAVEMENT.
 - CONTRACTOR SHALL RESEED AND MULCH ALL DISTURBED AREAS. COST SHALL BE CONSIDERED SUBSIDIARY TO BID ITEM "PROJECT SEEDING".

**GLEN WOOD: FROM THE N. LINE OF 13TH
 TO THE S. LINE OF EDGEWOOD
 BIRCHWOOD: FROM THE E. LINE OF GLEN WOOD
 TO THE E. LINE OF LOT 5, BLOCK 7
 GLEN WOOD COURT: SERVING LOTS 34 THROUGH 37, BLOCK 4,
 FROM THE W. LINE OF GLEN WOOD TO AND INCLUDING THE CUL-DE-SACS
 GLEN WOOD COURT: SERVING LOTS 31, 32, AND 33, BLOCK 4,
 FROM THE W. LINE OF GLEN WOOD TO AND INCLUDING THE CUL-DE-SAC**



INDEX TO DRAWINGS

SHEET NO.	DESCRIPTION
1	TITLE SHEET
2-4	TYP. PAVING SECTIONS
5-7	PAVING DETAILS
8	SIGNING DETAILS
9-13	PAVING PLANS
14-18	STORM SEWER PLANS
19-23	STORM SEWER DETAILS
24	EROSION CONTROL
25-31	CROSS SECTIONS
32	FINAL PLAT

BENCHMARKS

- BM#1 BRASS DISC IN E END OF N HUBGUARD
 1352.2' E & 22.4' N OF SW COR. OF
 SW 1/4, SEC 11, T27S, R2E.
 ELEV.=1340.83
- BM#2 RR SPIKE IN NE FACE PP N OF 13TH ST. N
 ±150' W OF THE SE COR., SW 1/4, SEC. 11
 T27S, R2E.
 ELEV.=1348.90
- BM#3 TOP OF "T" POST ± 5' SE & ±5' NE OF
 NW COR. LOT 1, BLOCK 7.
 ELEV.=1355.29
- BM#4 TOP OF "T" POST ± 5' N OF PT IRON AT
 COR. LOT 30, BLOCK 6.
 ELEV.=1352.34



LENGTH OF PROJECT	
PAVING	1082 FT.
EARTHWORK SUMMARY	
EXCAVATION	1650 C.Y.
BORROW	755 C.Y.
COMPACTED FILL	1064 C.Y.
LOOSE FILL	1125 C.Y.
DITCH GRADING	
EXCAVATION	190 C.Y.*
LOOSE FILL	330 C.Y.*

* FOR INFORMATION ONLY

G:\CIVIL\96081\HALLMARK\PHASE2\PAVE\01123_ET.DWG

ROCKY CREEK ADDITION-HALLMARK PHASE 2
 PROJECT NAME

PAVING & INCIDENTAL DRAINAGE PLANS
 SHEET TITLE

JTC/DFL DESIGN BY:	CLC DRAWN BY:	JTC CHECKED BY:
JUNE 2001 DATE	01123_ET DRAWING NAME	1 / 32 SHEET/OF

411 N. WEBB ROAD
 WICHITA, KS. 67206
 316-684-9600