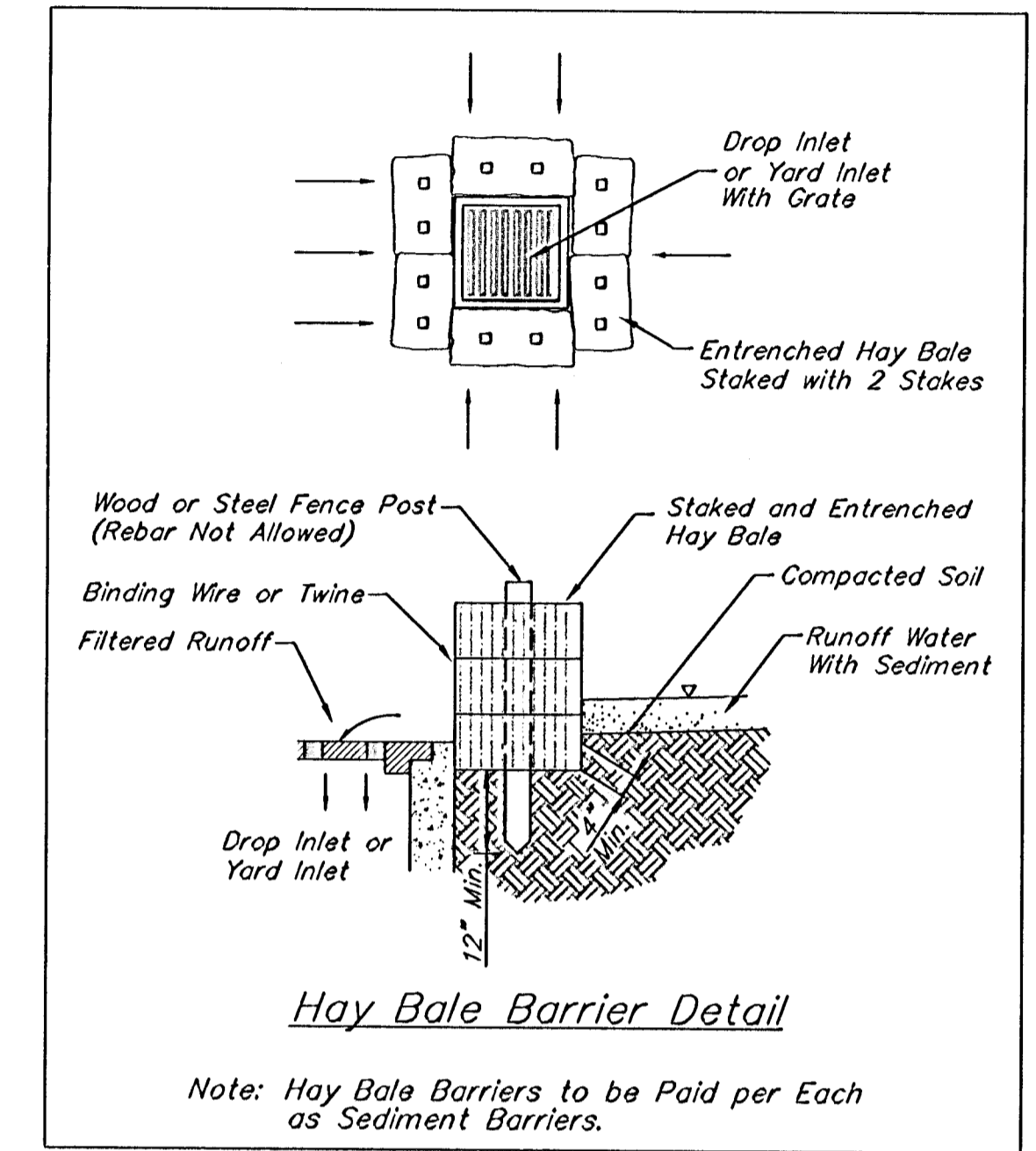
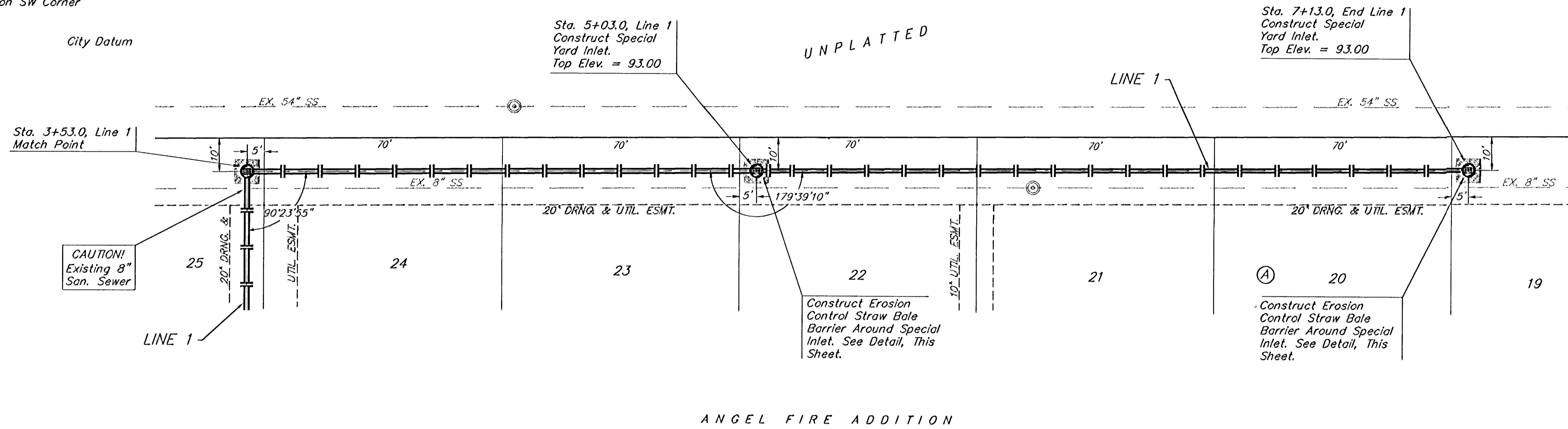


**Benchmarks:**

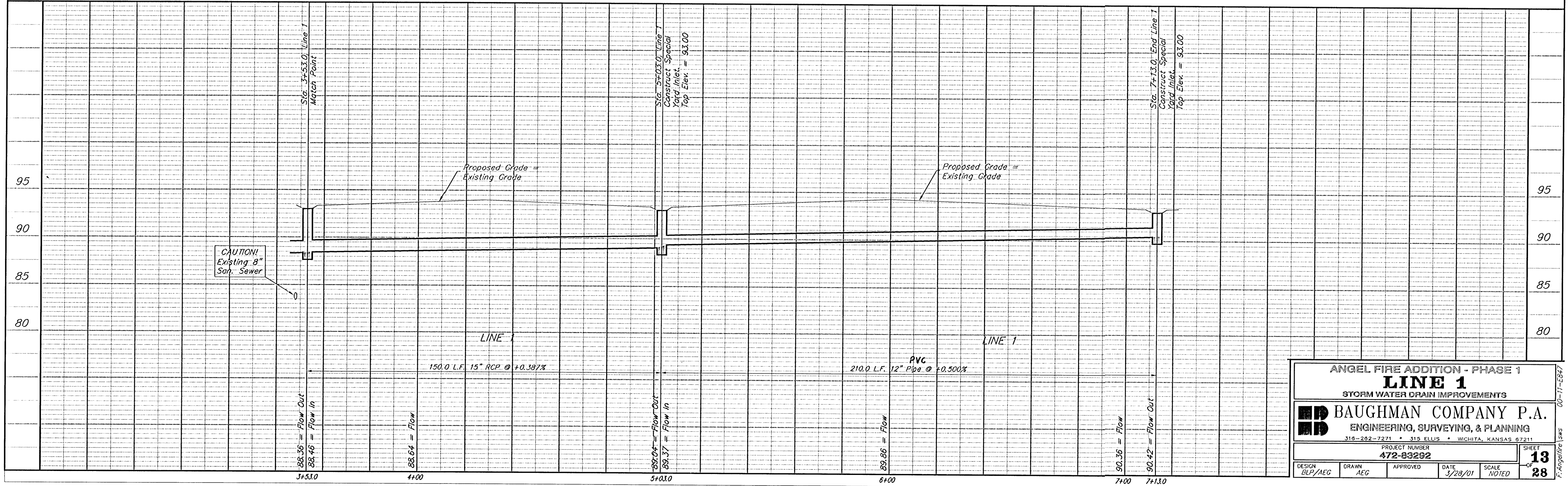
Railroad Spike in Power Pole  
 Located 27' South and 402' East  
 of the Northwest Corner of the  
 NE 1/4, Section 24, TWP. 28-S, R-1-W.  
 Elevation = 92.98 City Datum

City of Wichita Benchmark Disc SE Corner  
 of Intersection of 47th St. S. and West St.  
 42.10' E. of Centerline  
 51.00' S. of Centerline  
 99.80' E. of P.P. on SW Corner  
 23.80' S. of P.P.  
 Elevation = 92.29 City Datum

Scale:  
 1" = 20' Horizontal  
 1" = 5' Vertical  
 • = Iron



ANGEL FIRE ADDITION



ANGEL FIRE ADDITION - PHASE 1  
**LINE 1**  
 STORM WATER DRAIN IMPROVEMENTS

**BAUGHMAN COMPANY P.A.**  
 ENGINEERING, SURVEYING, & PLANNING  
 318-282-7271 • 315 ELLIS • WICHITA, KANSAS 67211

PROJECT NUMBER  
**472-83292**

DESIGN: BLP/AEG DRAWN: AEG APPROVED: DATE: 3/28/01 SCALE: NOTED

SHEET **13** OF **28**

00-11-ES&T