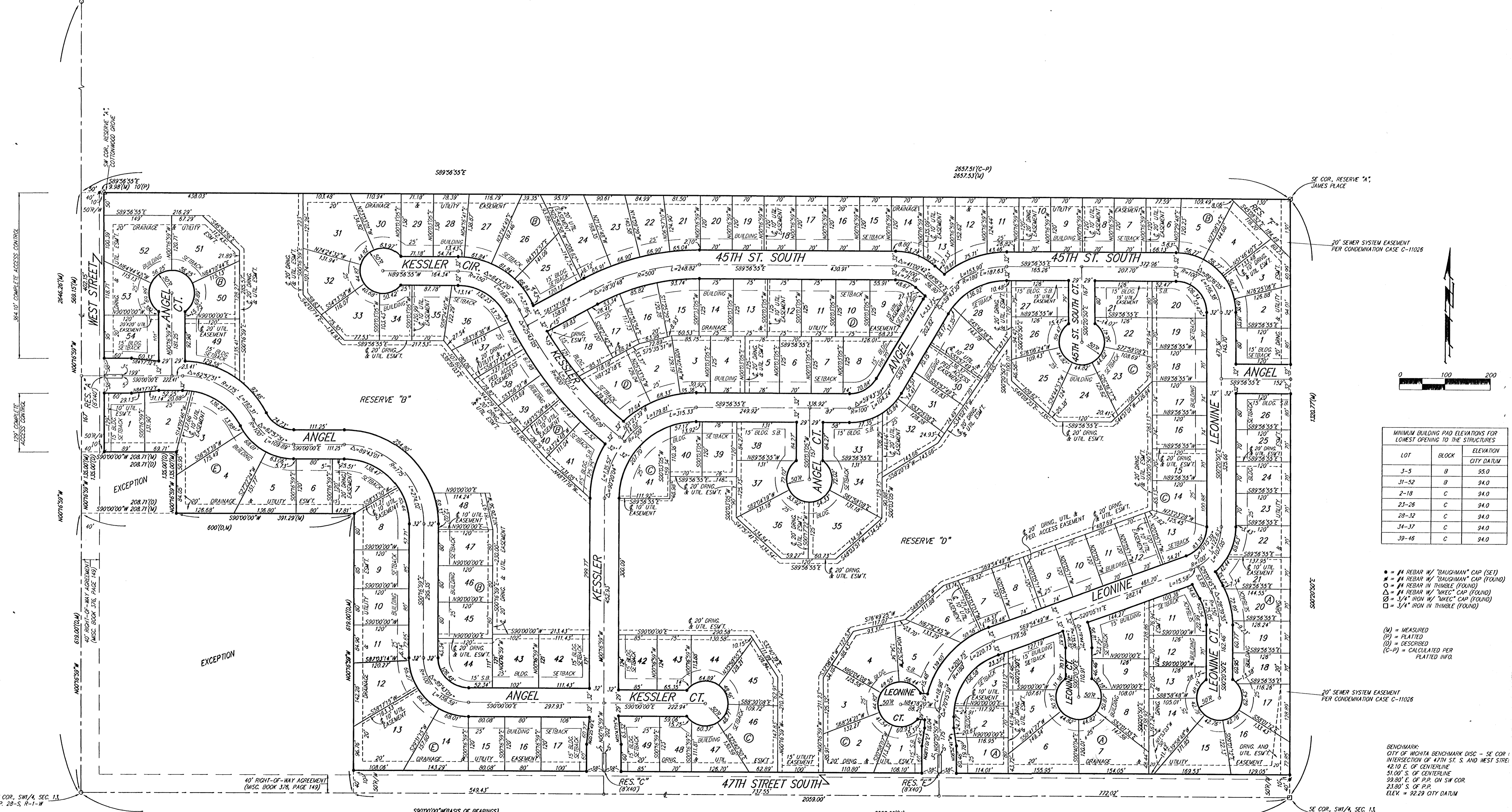


# ANGEL FIRE ADDITION

## WICHITA, SEDGWICK COUNTY, KANSAS

NW COR. SW 1/4, SEC. 13,  
TWP. 28-S, R-1-W



MINIMUM BUILDING PAD ELEVATIONS FOR LOWEST OPENING TO THE STRUCTURES

LOT	BLOCK	ELEVATION CITY DATUM
3-5	B	95.0
31-52	B	94.0
2-18	C	94.0
23-26	C	94.0
28-32	C	94.0
34-37	C	94.0
39-46	C	94.0

- = #4 REBAR W/ "BAUGHMAN" CAP (SET)
- = #4 REBAR W/ "BAUGHMAN" CAP (FOUND)
- = #4 REBAR IN THIMBLE (FOUND)
- △ = #4 REBAR W/ "WACK" CAP (FOUND)
- = 3/4" IRON W/ "WACK" CAP (FOUND)
- = 3/4" IRON IN THIMBLE (FOUND)

- (M) = MEASURED
- (P) = PLATTED
- (D) = DESCRIBED
- (C-P) = CALCULATED PER PLATTED INFO.

BENCHMARK:  
CITY OF WICHITA BENCHMARK DISC - SE COR. INTERSECTION OF 47TH ST. S. AND WEST ST. 42.10' E. OF CENTERLINE 51.00' S. OF CENTERLINE 39.80' E. OF P.P. ON SW COR. 23.80' S. OF P.P. ELEV. = 92.29 CITY DATUM