

STREET IMPROVEMENTS TO SERVE REECE FARMS ESTATES - PHASE I

GENERAL NOTES:

- Contractor will be required to provide notice to utility companies a minimum of twenty-four (24) hours prior to any excavation, as follows:

Kansas One-Call 687-2470

The Contractor must notify the following in case of an emergency:

Cablevision 262-4270
or
K.C.E. Gas Service Company 263-2061
Kansas Gas & Electric Company 383-8650
Peoples Nat. Gas Company 383-8600
Southwestern Bell Telephone Company 942-7600
City of Wichita Water Department 1-571-2611
City of Wichita Sewer Maintenance 268-4908
Phillips Pipeline Company 268-4071
Rural Water Dist. #4 800-766-8230
Kansas Gas Supply Corp. 794-8891
 648-1230

- Utility service lines, poles, valve boxes, meters, and etcetera are to be adjusted as necessary by others prior to construction unless the plans specifically call for their adjustment by the Contractor or unless the plans specifically identify a utility to be adjusted by its owner during construction. Existing utilities and their location, as shown on the plans, represent the best information obtainable for design. The contractor will be required to work around existing utilities within the right-of-way which do not conflict with proposed construction.
- Rubble from the removal of miscellaneous structures and excess excavation which is to be wasted shall be disposed of on sites to be provided by the Contractor. These sites shall be approved by the Engineer as to suitability, appearance and site location. Locations that, in the opinion of the Engineer, will leave an unsightly appearance will not be approved. All disposal sites must be approved by the Kansas Department of Health and Environment. Material either stockpiled or disposed of in a flood plain would require a Kansas State Board of Agriculture permit. Any material dumped in waters of the United States or wetlands is subject to U.S. Corps. of Engineers permitting regulations. Any material buried or stockpiled beyond approved construction limits would require additional archaeological investigations unless buried in a previously approved borrow location.
- The Contractor shall adjust water valve boxes and fire hydrants as directed by the Engineer at the price bid for said adjustments. The Water Department shall field located water valves one time during construction when requested by Contractor. It shall be the Contractor's responsibility to preserve such field locations during the construction process. Water valves, water valve boxes or fire hydrants damaged during construction shall be repaired by the Contractor at his own expense.
- The Contractor shall be responsible for preserving property irons. The Contractor will be required to reestablish any property irons which are damaged or destroyed by his construction operations. Such irons shall be reestablished by a licensed land surveyor in accordance with state law.
- All areas disturbed by construction shall be seeded at 300 lbs./acre with Rye Grass immediately following construction in that area. Contractor shall prepare ground per City specifications.
- When crossing Phillips Pipe Line Company pipelines, the Contractor shall perform all excavation according to the standards outlined in Phillips Pipe Line Company Maintenance Manual: MPR-2702. Track-hoe excavation shall cease 2' (two feet) from pipe. Pipe shall then be exposed by hand shoveling. Trench backfill and compaction shall be done according to City of Wichita Specifications.

Project Earthwork Totals	
-Streets-	
Excavation	= 5141 C.Y.
Compacted Fill	= 4008 C.Y.
Loose Fill	= 4036 C.Y.
-Pond #1-	
Excavation	= 39191 C.Y.
Compacted Fill	= 334 C.Y.
-Pond #2-	
Excavation	= 23431 C.Y.
Compacted Fill	= 2010 C.Y.
Total Project Length	
4155 L.F.	= .787 Miles

HENDRYX: From the east line of the plat
to the west line of Lot 3, Block B
McCORMICK AVENUE: From the south line of Hendryx
to the west line of Lot 15, Block B
HENDRYX COURT (Lots 2-8, Block A): From the north line of Hendryx
to and including cul-de-sac
HENDRYX COURT (Lots 13-20, Block A): From the north line of Hendryx
to and including cul-de-sac

CITY OF WICHITA, KANSAS

Michael E. Lindebak, P.E. City Engineer

Project Number

472-82929

Index Code:

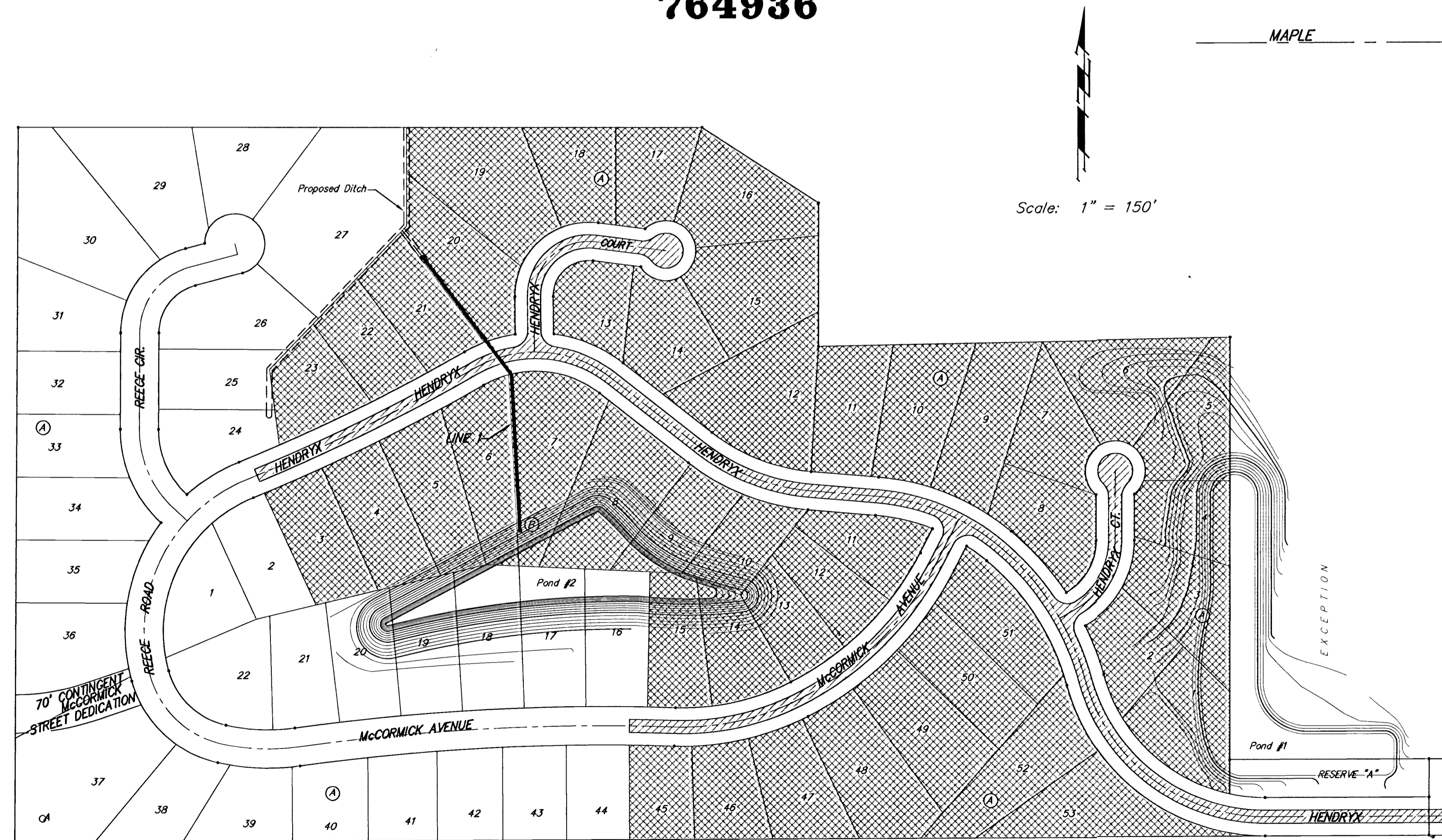
764936

BENCHMARK:

Top of 1" Iron 12" Deep, E1/4 Cor.,
Sec. 27, Twp. 27-S, R-2-W.
Elev. = 209.13 (City Datum)

SHEET INDEX:

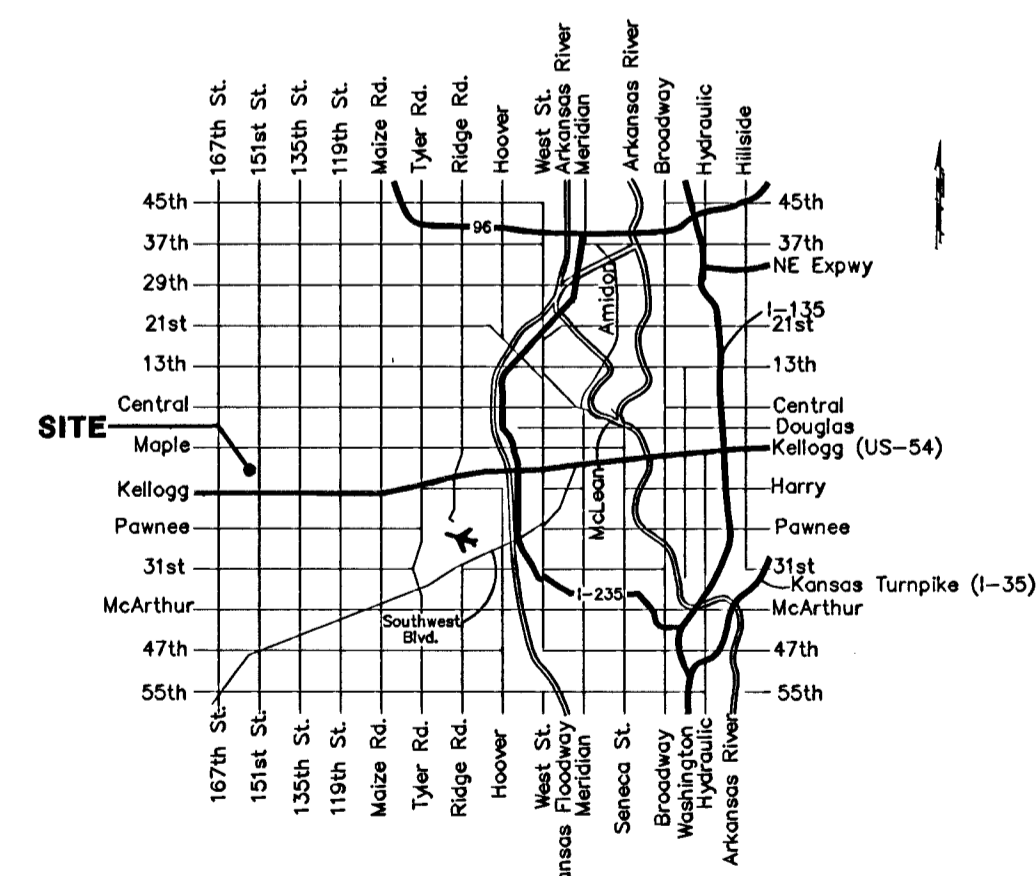
Title Sheet	1
Sign Detail	2
Hendryx	3-5
Hendryx Court	6
McCormick Avenue	7
Hendryx Court	8
Storm Water Sewer Line 1	9
Ditch Plan	10
Pond #1	11
Pond #2	12
Standard Drop Inlet Detail	13
Standard Manhole Detail	14
Shallow Manhole Detail	15
Ring & Cover Detail	16
Mass Grading Plan	17-19
Earth Work Cross Sections	20-36
Copy of Plat	37



Benefit District



Proposed Pavement



Vicinity Map

