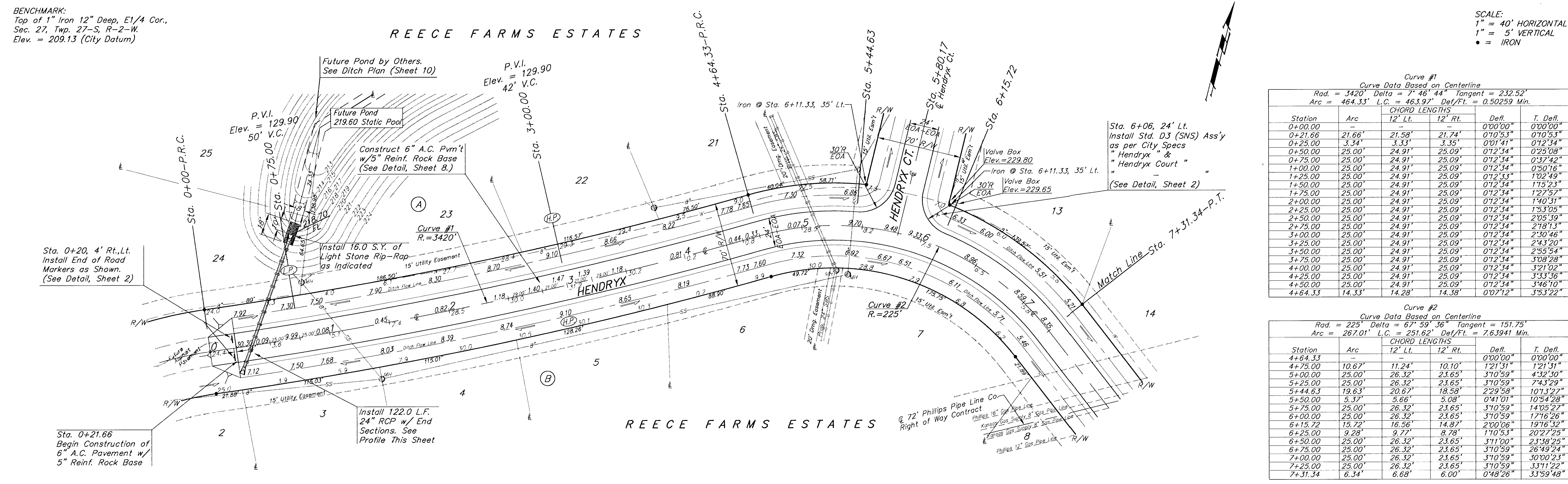


BENCHMARK:  
Top of 1" Iron 12" Deep, E1/4 Cor.,  
Sec. 27, Twp. 27-S, R-2-W.  
Elev. = 209.13 (City Datum)

REECE FARMS ESTATES

SCALE:  
1" = 40' HORIZONTAL  
1" = 5' VERTICAL  
● = IRON



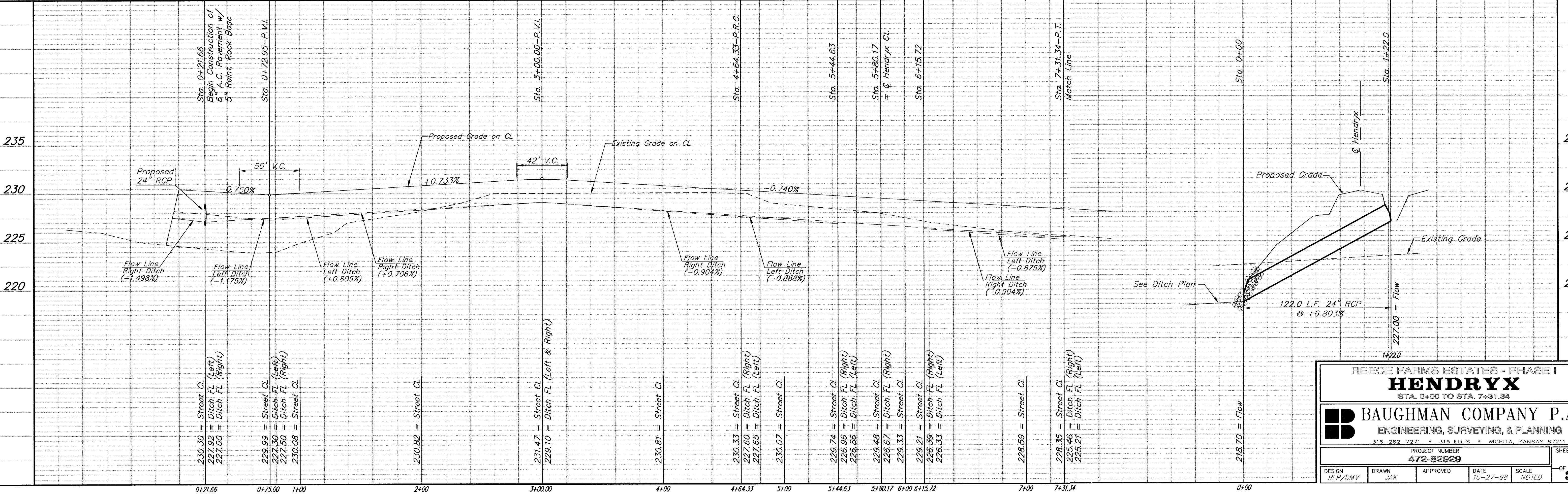
Curve Data Based on Centerline  
Rad. = 3420' Delta = 7° 46' 44" Tangent = 232.52'  
Arc = 464.33' L.C. = 463.92' Def/Ft. = 0.50259 Min.

Station	CHORD LENGTHS		Defl.	T. Defl.
	12' Lt.	12' Rt.		
0+00.00	-	-	0°00'00"	0°00'00"
0+21.66	21.66'	21.74'	0°10'53"	0°10'53"
0+25.00	3.34'	3.35'	0°01'41"	0°12'34"
0+50.00	25.00'	24.91'	25.09'	0°12'34"
0+75.00	25.00'	24.91'	25.09'	0°12'34"
1+00.00	25.00'	24.91'	25.09'	0°12'34"
1+25.00	25.00'	24.91'	25.09'	0°12'34"
1+50.00	25.00'	24.91'	25.09'	0°12'34"
1+75.00	25.00'	24.91'	25.09'	0°12'34"
2+00.00	25.00'	24.91'	25.09'	0°12'34"
2+25.00	25.00'	24.91'	25.09'	0°12'34"
2+50.00	25.00'	24.91'	25.09'	0°12'34"
2+75.00	25.00'	24.91'	25.09'	0°12'34"
3+00.00	25.00'	24.91'	25.09'	0°12'34"
3+25.00	25.00'	24.91'	25.09'	0°12'34"
3+50.00	25.00'	24.91'	25.09'	0°12'34"
3+75.00	25.00'	24.91'	25.09'	0°12'34"
4+00.00	25.00'	24.91'	25.09'	0°12'34"
4+25.00	25.00'	24.91'	25.09'	0°12'34"
4+50.00	25.00'	24.91'	25.09'	0°12'34"
4+64.33	14.33'	14.38'	0°07'12"	3°53'22"

Curve Data Based on Centerline  
Rad. = 225' Delta = 67° 59' 36" Tangent = 151.75'  
Arc = 267.01' L.C. = 251.62' Def/Ft. = 7.63941 Min.

Station	CHORD LENGTHS		Defl.	T. Defl.
	12' Lt.	12' Rt.		
4+64.33	-	-	0°00'00"	0°00'00"
4+75.00	10.67'	11.24'	10.10'	1°21'31"
5+00.00	25.00'	26.32'	23.65'	3°10'59"
5+25.00	25.00'	26.32'	23.65'	3°10'59"
5+44.63	19.63'	20.67'	18.58'	2°29'58"
5+50.00	5.37'	5.66'	5.08'	0°41'01"
5+75.00	25.00'	26.32'	23.65'	3°10'59"
6+00.00	25.00'	26.32'	23.65'	3°10'59"
6+15.72	15.72'	16.56'	14.87'	2°00'06"
6+25.00	9.28'	9.77'	8.78'	1°10'53"
6+50.00	25.00'	26.32'	23.65'	3°11'00"
6+75.00	25.00'	26.32'	23.65'	3°10'59"
7+00.00	25.00'	26.32'	23.65'	3°10'59"
7+25.00	25.00'	26.32'	23.65'	3°10'59"
7+31.34	6.34'	6.68'	6.00'	0°48'26"



REECE FARMS ESTATES - PHASE I  
**HENDRYX**  
STA. 0+00 TO STA. 7+31.34

**BAUGHMAN COMPANY P.A.**  
ENGINEERING, SURVEYING, & PLANNING  
316-262-7271 • 315 ELLIS • WICHITA, KANSAS 67211

PROJECT NUMBER  
**472-82929**

DESIGN: BLP/DMV DRAWN: JAK APPROVED: DATE: 10-27-98 SCALE: NOTED SHEET: **3** OF **37**