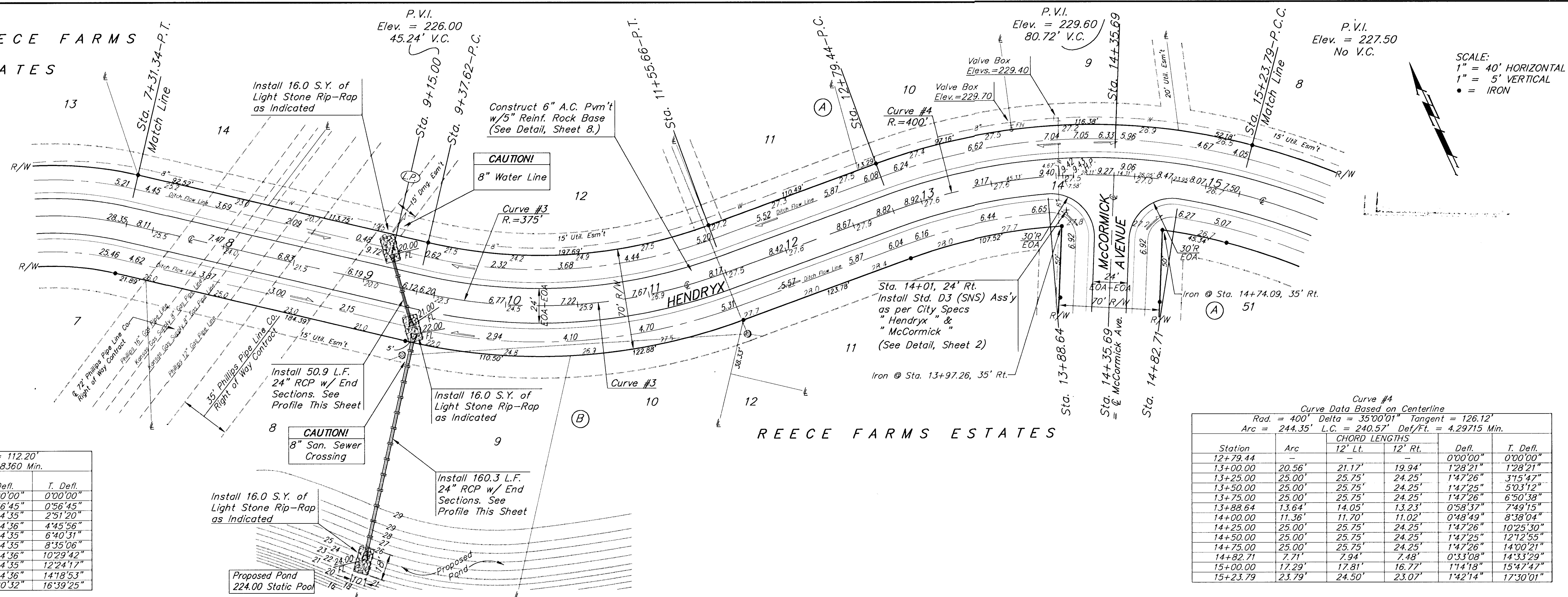


BENCHMARK:  
Top of 1" Iron 12" Deep, E1/4 Cor.,  
Sec. 27, Twp. 27-S, R-2-W.  
Elev. = 209.13 (City Datum)

REECE FARMS  
ESTATES

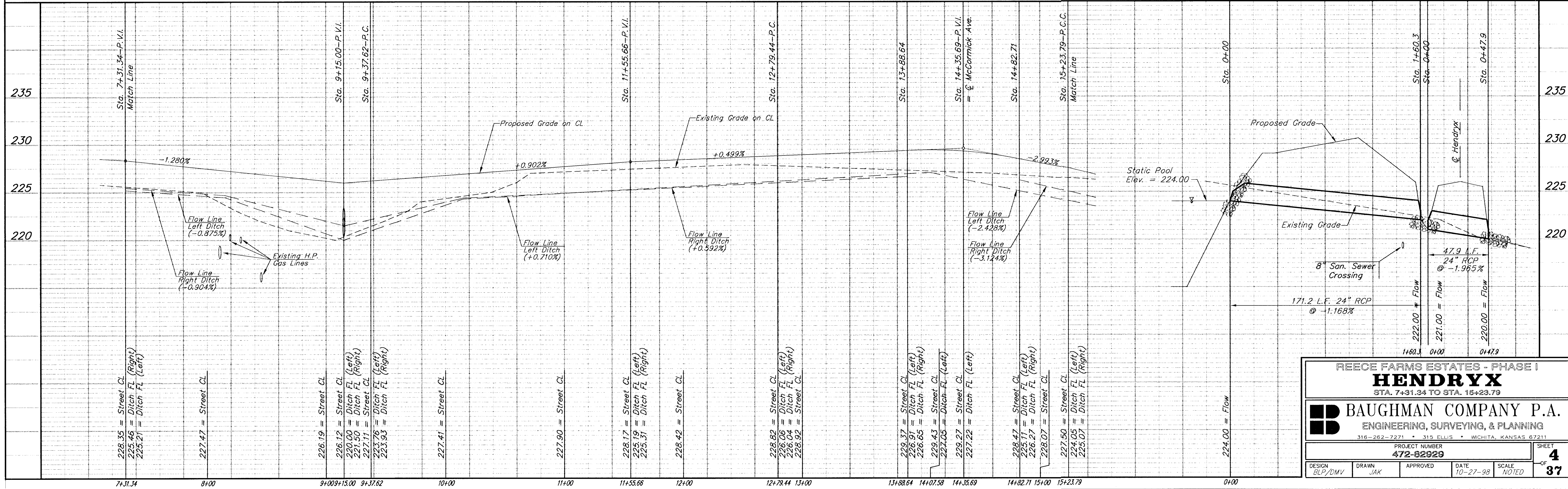


Curve #3  
Curve Data Based on Centerline  
Rad. = 375' Delta = 33°18'49" Tangent = 112.20'  
Arc = 218.04' L.C. = 214.98' Def/Ft. = 4.58360 Min.

Station	Arc	CHORD LENGTHS		Def.	T. Def.
		12' Lt.	12' Rt.		
9+37.62	-	-	-	0'00"00"	0'00"00"
9+50.00	12.38'	11.98'	12.78'	0'56"45"	0'56"45"
9+75.00	25.00'	24.20'	25.79'	1'54"35"	2'51"20"
10+00.00	25.00'	24.20'	25.79'	1'54"35"	4'45"56"
10+25.00	25.00'	24.20'	25.79'	1'54"35"	6'40"31"
10+50.00	25.00'	24.20'	25.79'	1'54"35"	8'35"06"
10+75.00	25.00'	24.20'	25.79'	1'54"35"	10'29'42"
11+00.00	25.00'	24.20'	25.79'	1'54"35"	12'24'17"
11+25.00	25.00'	24.20'	25.79'	1'54"35"	14'18'53"
11+55.66	30.66'	29.67'	31.63'	2'20"32"	16'39'25"

Curve #4  
Curve Data Based on Centerline  
Rad. = 400' Delta = 35°00'01" Tangent = 126.12'  
Arc = 244.35' L.C. = 240.57' Def/Ft. = 4.29715 Min.

Station	Arc	CHORD LENGTHS		Def.	T. Def.
		12' Lt.	12' Rt.		
12+79.44	-	-	-	0'00"00"	0'00"00"
13+00.00	20.56'	21.17'	19.94'	1'28"21"	1'28"21"
13+25.00	25.00'	25.75'	24.25'	1'47"26"	3'15"47"
13+50.00	25.00'	25.75'	24.25'	1'47"26"	5'03"12"
13+75.00	25.00'	25.75'	24.25'	1'47"26"	6'50'38"
13+88.64	13.64'	14.05'	13.23'	0'58"37"	7'49'15"
14+00.00	11.36'	11.70'	11.02'	0'48'49"	8'38'04"
14+25.00	25.00'	25.75'	24.25'	1'47"26"	10'25'30"
14+50.00	25.00'	25.75'	24.25'	1'47"26"	12'12'55"
14+75.00	25.00'	25.75'	24.25'	1'47"26"	14'00'21"
14+82.71	7.71'	7.94'	7.48'	0'33"08"	14'33'29"
15+00.00	17.29'	17.81'	16.77'	1'14"18"	15'47'47"
15+23.79	23.79'	24.50'	23.07'	1'42"14"	17'30'01"



REECE FARMS ESTATES - PHASE I  
**HENDRYX**  
STA. 7+31.34 TO STA. 15+23.79

**BAUGHMAN COMPANY P.A.**  
ENGINEERING, SURVEYING, & PLANNING  
316-282-7271 • 315 ELLIS • WICHITA, KANSAS 67211

PROJECT NUMBER  
**472-82929**

DESIGN: ELP/DMV DRAWN: JAK APPROVED: DATE: 10-27-98 SCALE: NOTED OF 37