

BENCHMARK:
Top of 1" Iron 12" Deep, E1/4 Cor.,
Sec. 27, Twp. 27-S, R-2-W
Elev. = 209.13 (City Datum)

P.V.I.
Elev. = 222.30
79.80' V.C.

P.V.I.
Elev. = 213.10
69.68' V.C.

Sta. 25+65, 22' Lt.
Install Std. D3 (SNS) Ass'y
as per City Specs
"Hendryx" W" &
"151st St." S"
(See Detail, Sheet 2)

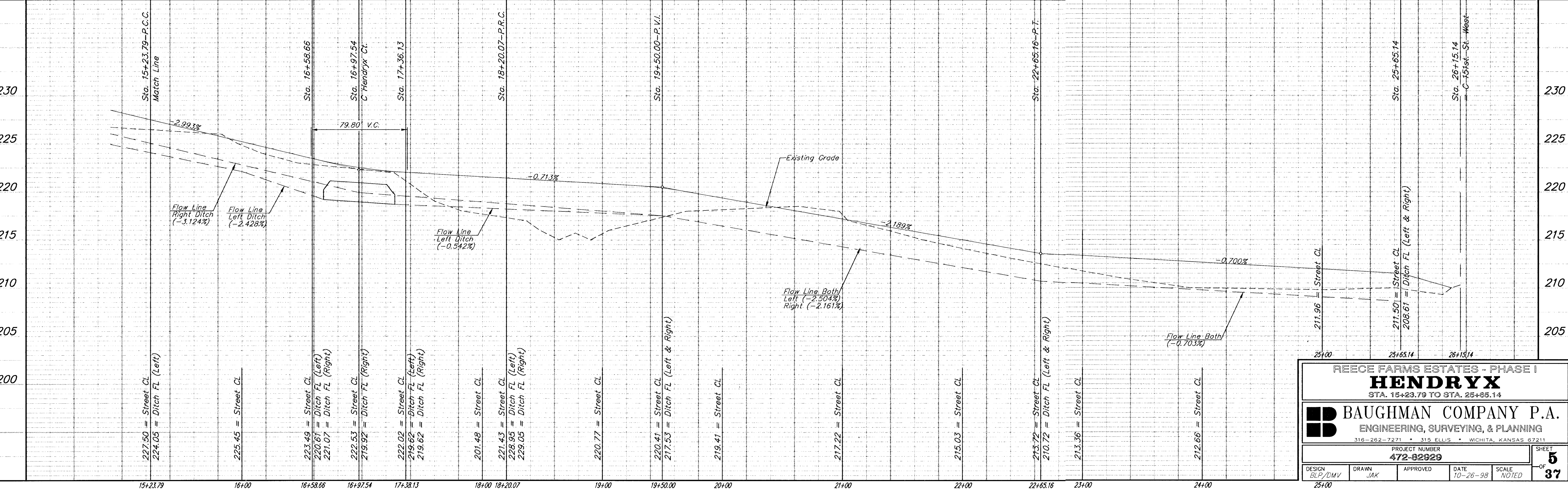
SCALE:
1" = 40' HORIZONTAL
1" = 5' VERTICAL
• = IRON

Curve #5
Curve Data Based on Centerline
Rad. = 485' Delta = 35°00'05" Tangent = 152.93'
Arc = 296.28' L.C. = 291.70' Def/Ft. = 3.54409 Min.

Station	Arc	CHORD LENGTHS			
		12' Lt.	12' Rt.	Defl.	T. Defl.
15+23.79	-	-	-	0'00'00"	0'00'00"
15+50.00	26.21'	26.86'	25.56'	1'32'53"	1'32'53"
15+75.00	25.00'	25.62'	24.38'	1'28'37"	3'01'30"
16+00.00	25.00'	25.62'	24.38'	1'28'36"	4'30'06"
16+25.00	25.00'	25.62'	24.38'	1'28'36"	5'58'42"
16+50.00	25.00'	25.62'	24.38'	1'28'36"	7'27'18"
16+58.86	8.86'	9.08'	8.64'	0'31'24"	7'58'42"
16+75.00	16.14'	16.54'	15.73'	0'57'12"	8'55'54"
17+00.00	25.00'	25.62'	24.38'	1'28'36"	10'24'30"
17+25.00	25.00'	25.62'	24.38'	1'28'36"	11'53'06"
17+36.13	11.13'	11.41'	10.83'	0'39'27"	12'32'33"
17+50.00	13.87'	14.21'	13.50'	0'49'09"	13'21'42"
17+75.00	25.00'	25.62'	24.38'	1'28'37"	14'50'19"
18+00.00	25.00'	25.62'	24.38'	1'28'36"	16'18'55"
18+20.07	20.07'	20.57'	19.57'	1'11'08"	17'30'03"

Curve #6
Curve Data Based on Centerline
Rad. = 340' Delta = 75°00'18" Tangent = 260.91'
Arc = 445.09' L.C. = 413.98' Def/Ft. = 5.05549 Min.

Station	Arc	CHORD LENGTHS			
		12' Lt.	12' Rt.	Defl.	T. Defl.
18+20.07	-	-	-	0'00'00"	0'00'00"
18+25.00	4.93'	4.76'	5.10'	0'24'55"	0'24'55"
18+50.00	25.00'	24.11'	25.88'	2'06'23"	2'31'19"
18+75.00	25.00'	24.11'	25.88'	2'06'23"	4'37'42"
19+00.00	25.00'	24.11'	25.88'	2'06'23"	6'44'05"
19+25.00	25.00'	24.11'	25.88'	2'06'23"	8'50'28"
19+50.00	25.00'	24.11'	25.88'	2'06'24"	10'56'52"
19+75.00	25.00'	24.11'	25.88'	2'06'23"	13'03'15"
20+00.00	25.00'	24.11'	25.88'	2'06'23"	15'09'38"
20+25.00	25.00'	24.11'	25.88'	2'06'23"	17'16'01"
20+50.00	25.00'	24.11'	25.88'	2'06'24"	19'22'25"
20+75.00	25.00'	24.11'	25.88'	2'06'23"	21'28'48"
21+00.00	25.00'	24.11'	25.88'	2'06'23"	23'35'11"
21+25.00	25.00'	24.11'	25.88'	2'06'23"	25'41'34"
21+50.00	25.00'	24.11'	25.88'	2'06'24"	27'47'58"
21+75.00	25.00'	24.11'	25.88'	2'06'23"	29'54'21"
22+00.00	25.00'	24.11'	25.88'	2'06'23"	32'00'44"
22+25.00	25.00'	24.11'	25.88'	2'06'23"	34'07'07"
22+50.00	25.00'	24.11'	25.88'	2'06'24"	36'13'31"
22+65.16	15.16'	14.62'	15.69'	1'16'38"	37'30'09"



REECE FARMS ESTATES - PHASE I
HENDRYX
STA. 15+23.79 TO STA. 25+65.14

BAUGHMAN COMPANY P.A.
ENGINEERING, SURVEYING, & PLANNING
316-262-7271 • 315 ELLIS • WICHITA, KANSAS 67211

PROJECT NUMBER
472-82929

DESIGN BLP/DMV	DRAWN JAK	APPROVED	DATE 10-26-98	SCALE NOTED
-------------------	--------------	----------	------------------	----------------

SHEET
OF
5
37