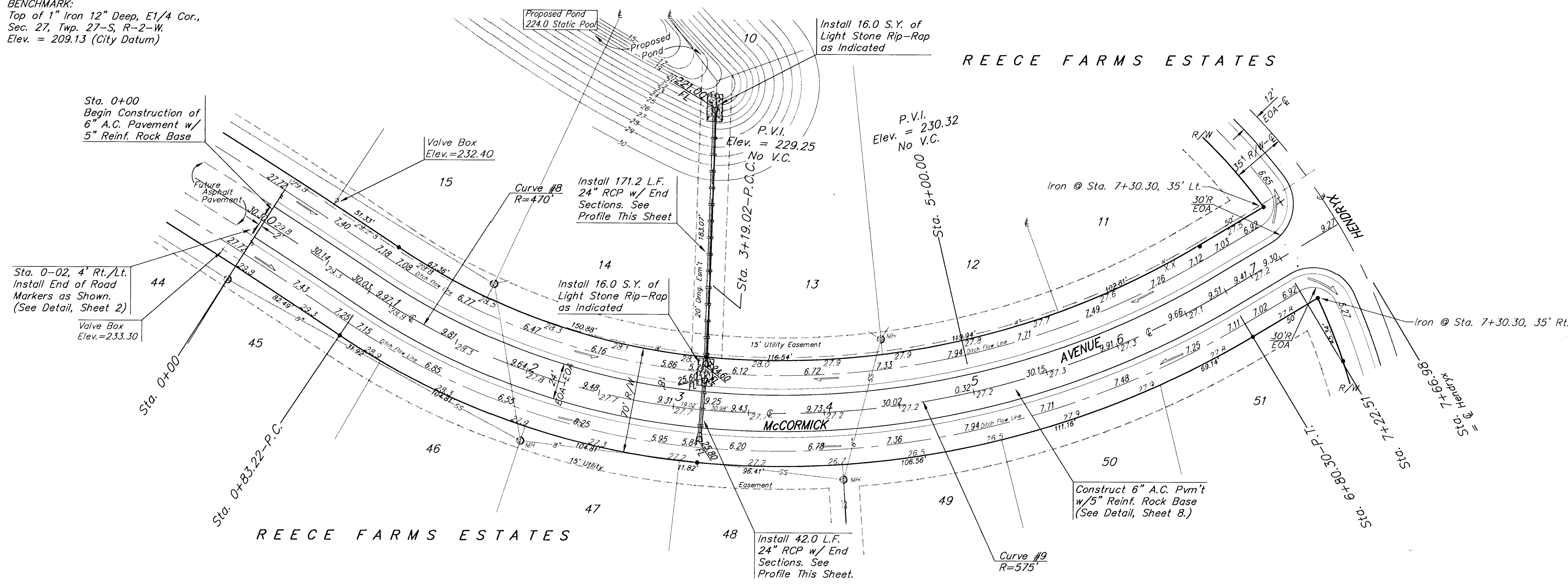


BENCHMARK:
Top of 1" Iron 12" Deep, E1/4 Cor.,
Sec. 27, Twp. 27-S, R-2-W.
Elev. = 209.13 (City Datum)

SCALE:
1" = 40' HORIZONTAL
1" = 5' VERTICAL
• = IRON

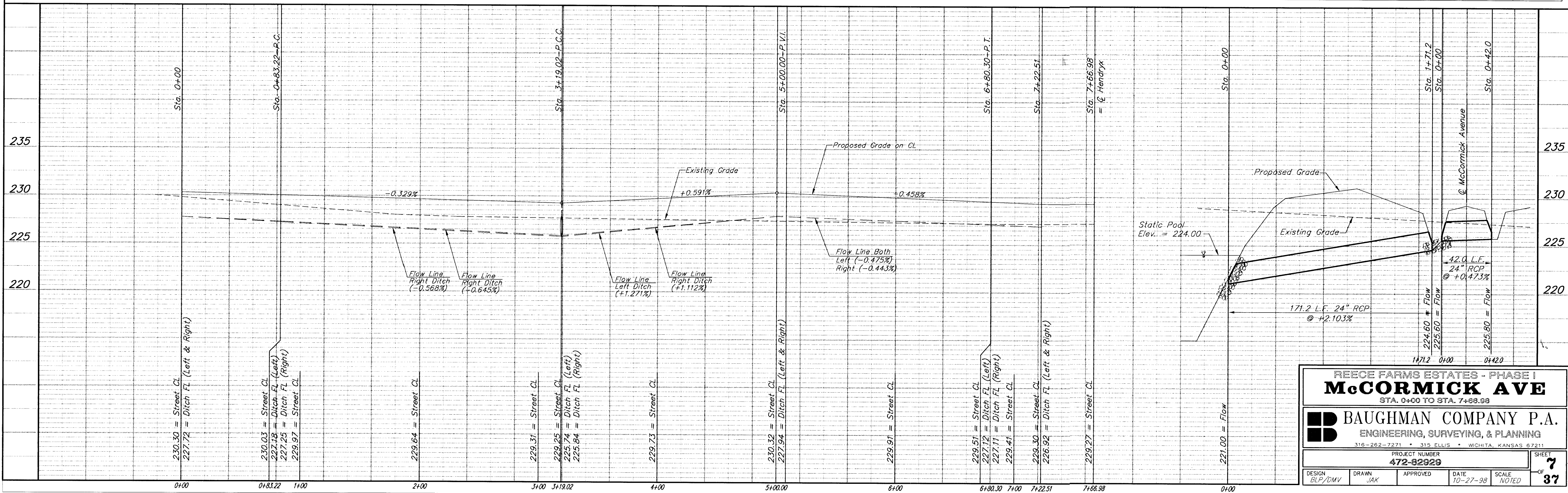


Curve #8
Curve Data Based on Centerline
Rad. = 470' Delta = 28° 44' 45" Tangent = 120.44'
Arc = 235.8' L.C. = 233.34' Def/Ft. = 3.65723 Min.

Station	Arc	FACE CHORD LENGTHS		Defl.	T. Defl.
		12' Lt.	12' Rt.		
0+83.22	-	-	-	0'00"00"	0'00"00"
1+00.00	16.78'	16.35'	17.21'	1'01"22"	1'01"22"
1+25.00	25.00'	24.36'	25.64'	1'31"26"	2'32"48"
1+50.00	25.00'	24.36'	25.64'	1'31"26"	4'04'14"
1+75.00	25.00'	24.36'	25.64'	1'31"26"	5'35'40"
2+00.00	25.00'	24.36'	25.64'	1'31"26"	7'07'05"
2+25.00	25.00'	24.36'	25.64'	1'31"26"	8'38'31"
2+50.00	25.00'	24.36'	25.64'	1'31"26"	10'09'57"
2+75.00	25.00'	24.36'	25.64'	1'31"26"	11'41'23"
3+00.00	25.00'	24.36'	25.64'	1'31"26"	13'12'49"
3+19.02	19.02'	18.53'	19.50'	1'09'53"	14'22'22"

Curve #9
Curve Data Based on Centerline
Rad. = 575' Delta = 36°00'00" Tangent = 186.83'
Arc = 361.28' L.C. = 353.37' Def/Ft. = 2.98937 Min.

Station	Arc	FACE CHORD LENGTHS		Defl.	T. Defl.
		12' Lt.	12' Rt.		
3+19.02	-	-	-	0'00"00"	0'00"00"
3+25.00	5.98'	5.86'	6.10'	0'17"52"	0'17"52"
3+50.00	25.00'	24.48'	25.52'	1'14'44"	1'32'36"
3+75.00	25.00'	24.48'	25.52'	1'14'44"	2'47'21"
4+00.00	25.00'	24.48'	25.52'	1'14'44"	4'02'05"
4+25.00	25.00'	24.48'	25.52'	1'14'44"	5'16'49"
4+50.00	25.00'	24.48'	25.52'	1'14'44"	6'31'33"
4+75.00	25.00'	24.48'	25.52'	1'14'44"	7'46'17"
5+00.00	25.00'	24.48'	25.52'	1'14'44"	9'01'01"
5+25.00	25.00'	24.48'	25.52'	1'14'44"	10'15'45"
5+50.00	25.00'	24.48'	25.52'	1'14'44"	11'30'29"
5+75.00	25.00'	24.48'	25.52'	1'14'44"	12'45'13"
6+00.00	25.00'	24.48'	25.52'	1'14'44"	13'59'57"
6+25.00	25.00'	24.48'	25.52'	1'14'44"	15'14'41"
6+50.00	25.00'	24.48'	25.52'	1'14'44"	16'29'25"
6+75.00	25.00'	24.48'	25.52'	1'14'44"	17'44'09"
6+80.30	5.30'	5.19'	5.41'	0'15'50"	18'00'00"



REECE FARMS ESTATES - PHASE I
McCORMICK AVE
STA. 0+00 TO STA. 7+68.98

BAUGHMAN COMPANY P.A.
ENGINEERING, SURVEYING, & PLANNING
316-262-7271 • 315 ELLIS • WICHITA, KANSAS 67211

PROJECT NUMBER
472-82929

DESIGN: BLP/DNV DRAWN: JAK APPROVED: DATE: 10-27-98 SCALE: NOTED

SHEET **7** OF **37**