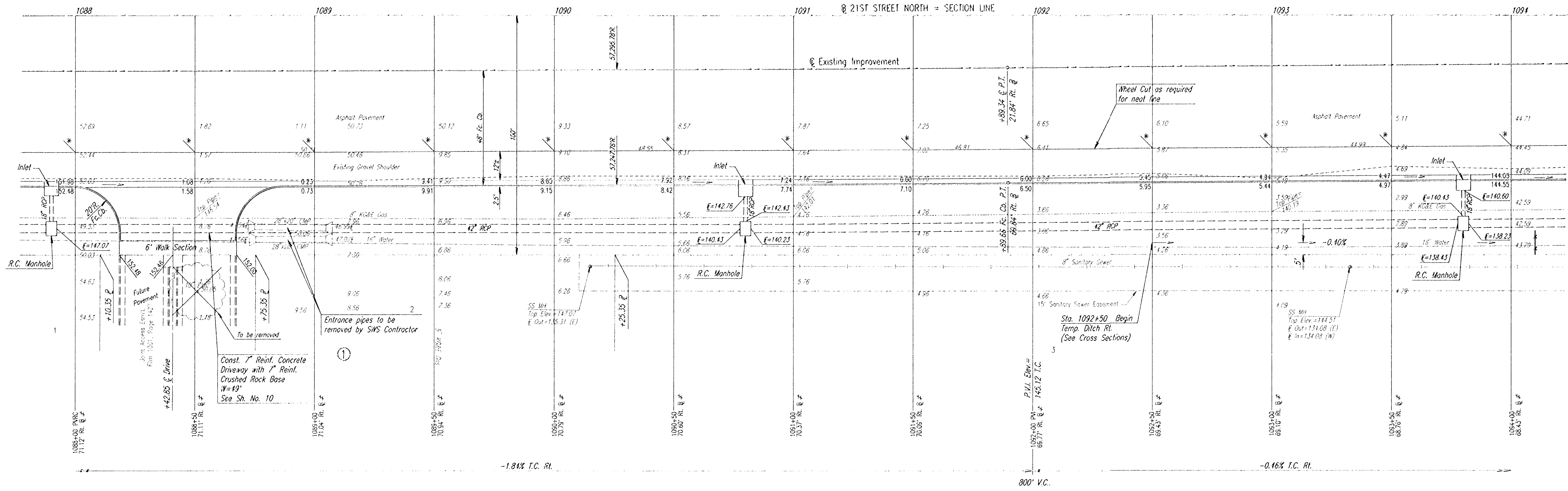


SCALE: 1"=20'



NOTE: STORM WATER SEWER PIPES AND STRUCTURES ARE TO BE CONSTRUCTED BY OTHERS UNDER C.O.N. PROJ. NO. 467-76-245-81911-000-000.

* MATCH EXISTING EDGE OF PAVEMENT PLUS 1 1/2'
 ≠ FACE OF CURB

BARRINGTON CORNER DECEL LANE

21ST STREET NORTH
 STA 1088+00 TO STA. 1094+00

PROFESSIONAL ENGINEERING CONSULTANTS, P.A.
 ENGINEERS
 WICHITA, KANSAS

Designed by	BER, GDD	Checked by	
Drawn by	DEP	Date	AUG. 1995
		Job No.	95325

usr:\usrn\dgn:1995\95325\plant.dgn
 date plotted: 8/8/95
 deliver to: awhite dunn