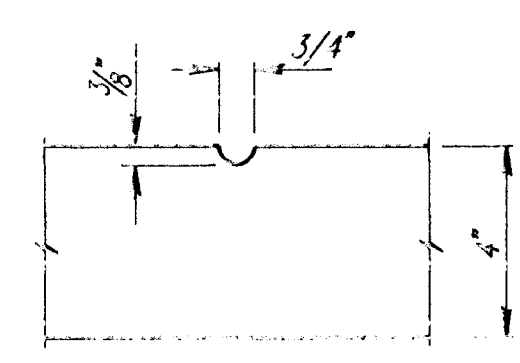
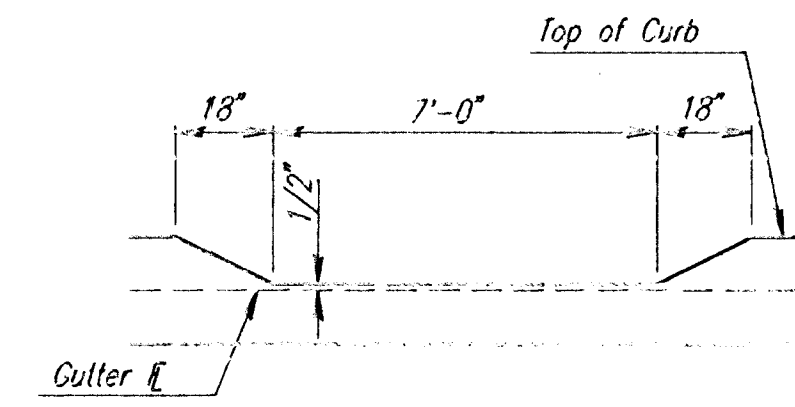


WHEELCHAIR RAMP DETAIL

SECTION A-A

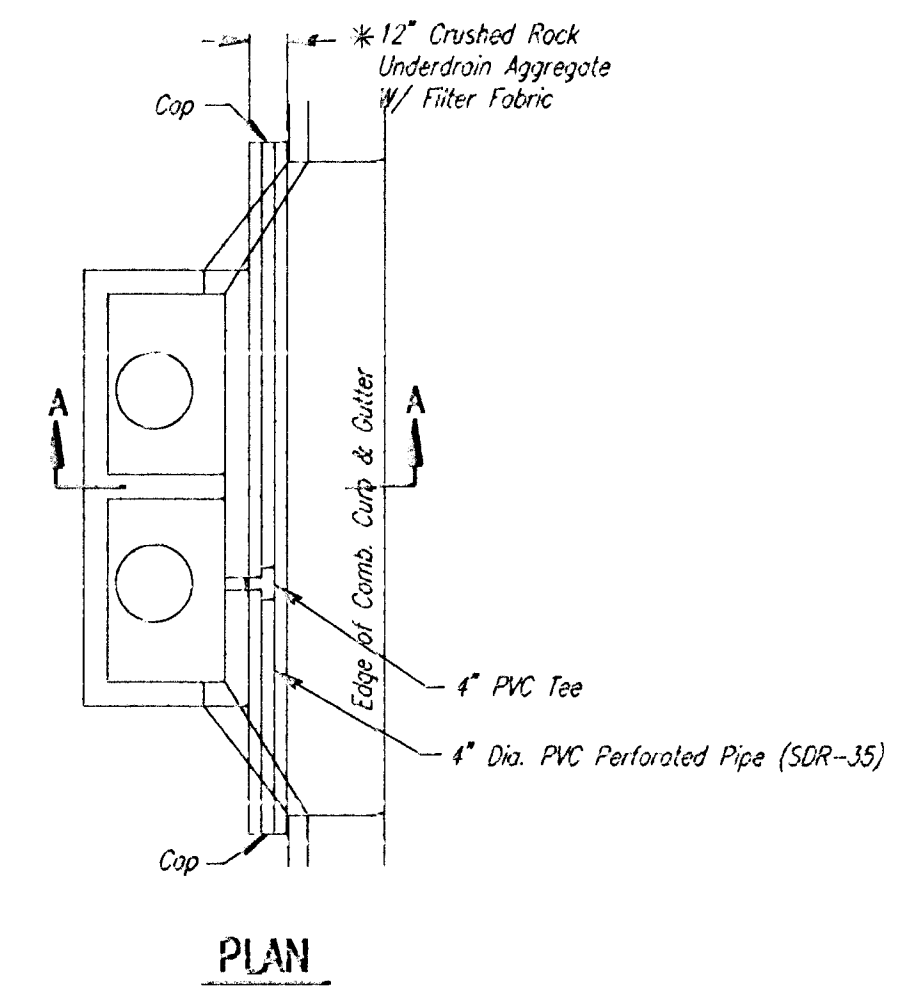


GROOVE DETAIL



DEPRESSED CURB DETAIL

TYPICAL WHEELCHAIR RAMP DETAILS



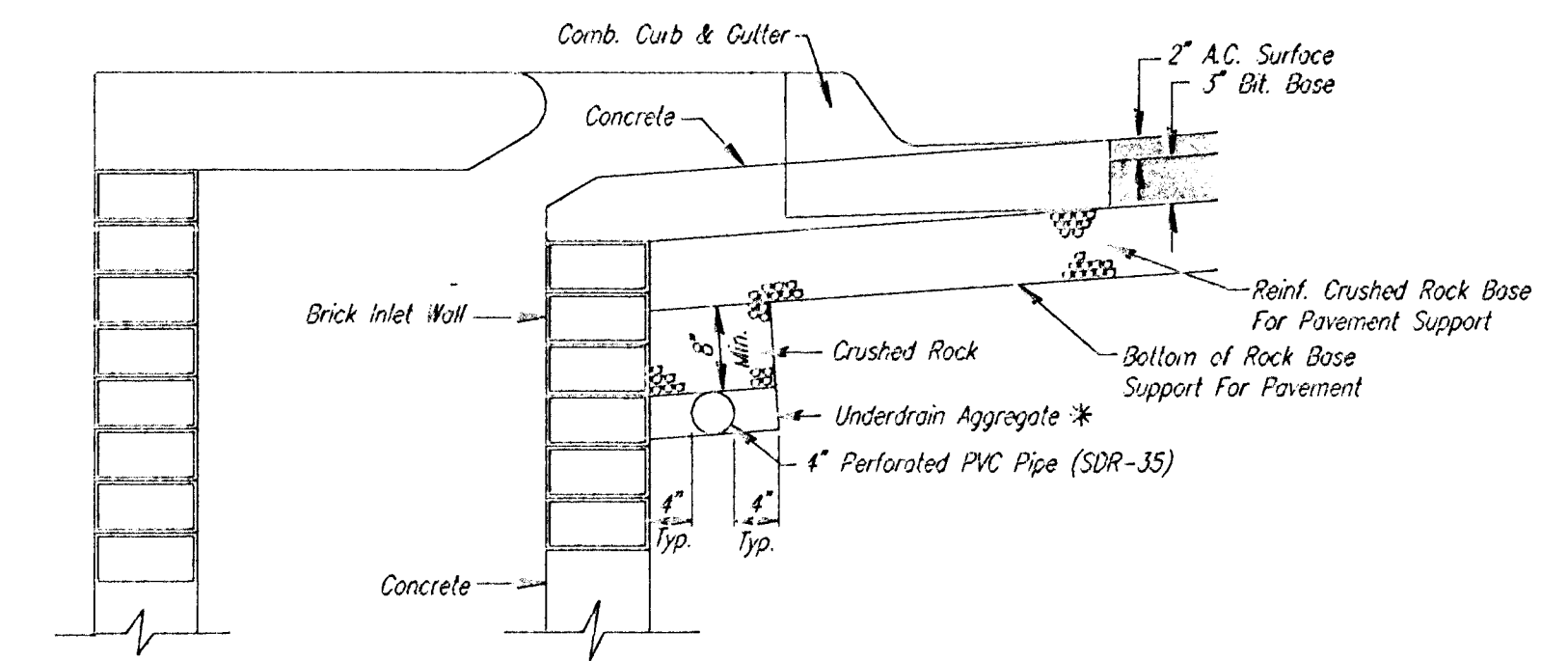
PLAN

* UNDERDRAIN AGGREGATE PERCENT OF AGGREGATE RETAINED

1"	0
3/4"	0-10
3/8"	45-80
1/4"	90-100
1/8"	95-100

ROCK QUALITY SHALL CONFORM TO THE REQUIREMENTS SPECIFIED BY THE KDOT 1990 EDITION STANDARD SPECIFICATION SUBSECTION 1102 FOR DURABILITY CLASS 0.

PAVEMENT UNDERDRAIN LOCATIONS		
STREET	STATION	SIDE
21ST ST. N.	1099+75	RT.



(Min. 16 Perforations Per Lin. Ft. @ 1/4" Dia.)
Perforations To Be on Bottom Half

SECTION A-A

NOTE: PAVEMENT CONTRACTOR WILL BE REQUIRED TO INSTALL SDR 35, 4" PERFORATED DRAIN PIPE AND TEE AS INDICATED IN THE DETAILS ABOVE. A PIPE STUB HAS BEEN INSTALLED THROUGH WALLS OF CURB INLETS BY OTHERS IN A MANNER ALLOWING CONNECTION OF ADDITIONAL DRAIN PIPE AND TEE AS REQUIRED BY DETAILS ABOVE.

PAVEMENT UNDERDRAIN DETAIL

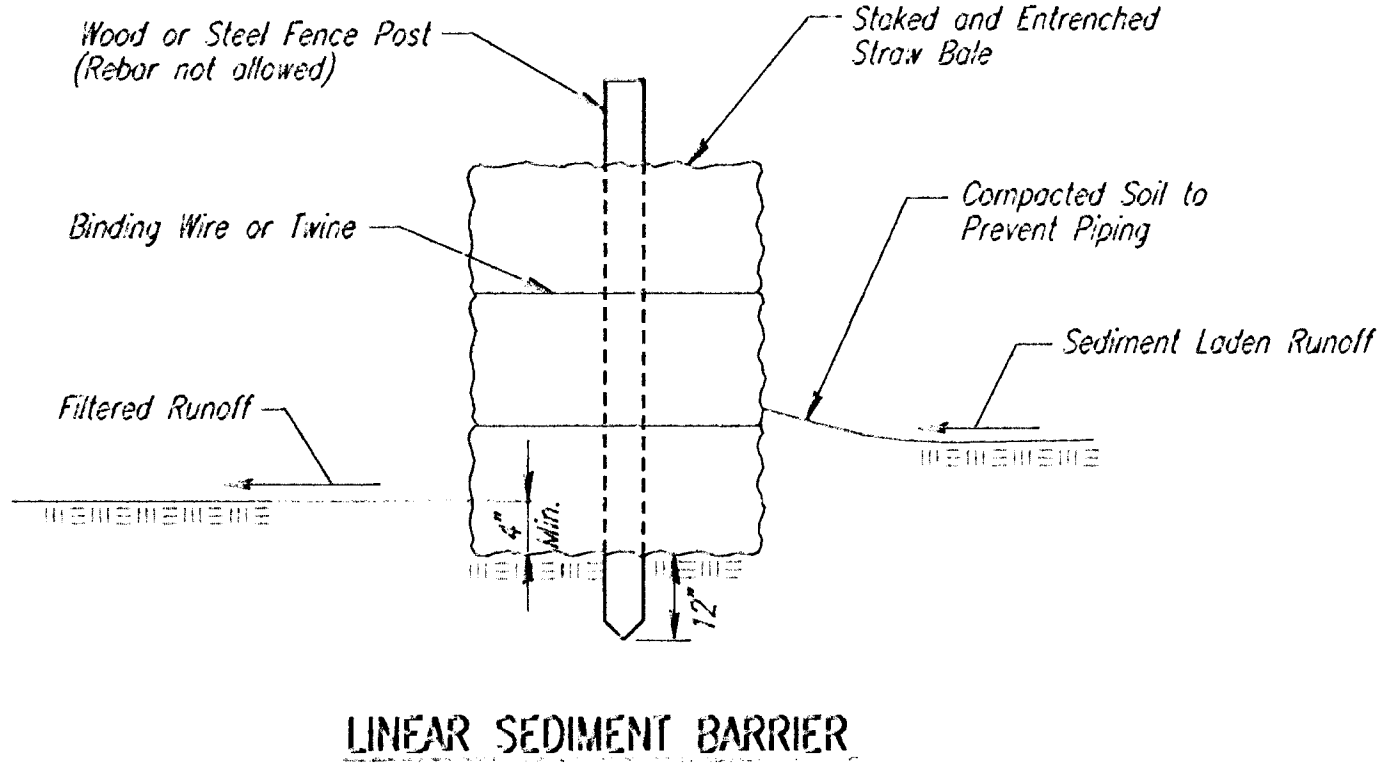
NOTE: PLACE 4" PVC PERFORATED PIPE AT ALL DRAINAGE SUMP LOCATION
COST OF UNDERDRAIN SYSTEM TO BE INCIDENTAL TO THE REINFORCED CRUSHED ROCK BASE.
INLET TYPE MAY VARY FROM THAT SHOWN.

NOTES

LINEAR SEDIMENT BARRIERS SHALL BE INSTALLED AT LOCATIONS SHOWN ON THE PLANS OR AS DIRECTED BY THE ENGINEER. ADDITIONAL LINEAR SEDIMENT BARRIERS WILL BE INSTALLED AT LOCATIONS AS DIRECTED BY THE ENGINEER WITH NO ADJUSTMENT IN UNIT PRICE.

BALES USED FOR LINEAR SEDIMENT BARRIERS MAY BE EITHER HAY OR STRAW, PROVIDED THEY ARE SOUND AND INTACT.

MEASUREMENT AND PAYMENT: THE ITEM "LINEAR SEDIMENT BARRIERS" SHALL BE MEASURED AND PAID FOR AT THE CONTRACT UNIT PRICE BID PER LINEAL FOOT COMPLETE IN PLACE. SAID PRICE SHALL BE CONSIDERED FULL COMPENSATION FOR EXCAVATION, COMPACTION, BACKFILL, SEDIMENT AND DEBRIS REMOVAL AND DISPOSAL, AND ALL MATERIALS, LABOR, TOOLS, AND INCIDENTALS NECESSARY TO COMPLETE THE WORK. RECONSTRUCTION OF EROSION CONTROL MEASURES WHICH ARE DESTROYED BY WIND, FLOOD, FIRE, OR BY THE ACTIONS OF THE CONTRACTOR OR OTHERS SHALL BE PERFORMED BY THE CONTRACTOR AS DIRECTED BY THE ENGINEER AT NO ADDITIONAL COST. WHERE ADJUSTMENTS IN QUANTITIES ARE REQUIRED BY FIELD CONDITIONS, THERE SHALL BE NO ADJUSTMENT IN UNIT PRICE.



LINEAR SEDIMENT BARRIER

us/ucm/dgn- 1995/05325/miscdtd.dgn
 date plotted: 8/8/95
 deliver to: chaine dunn

BARRINGTON CORNER DECEL LANE

MISCELLANEOUS PAVING DETAILS

PROFESSIONAL ENGINEERING CONSULTANTS, P.A.
ENGINEERS
RICHITA, KANSAS

Designed by	BER, GDD	Checked by	
Drawn by	DEP	Date	AUG, 1995
		Job No.	95325