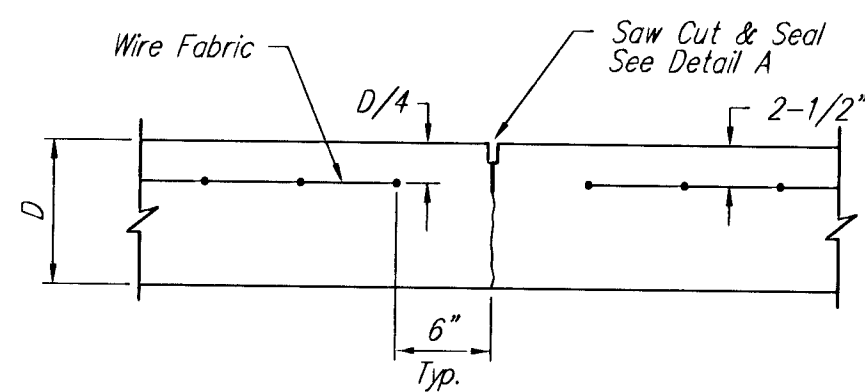
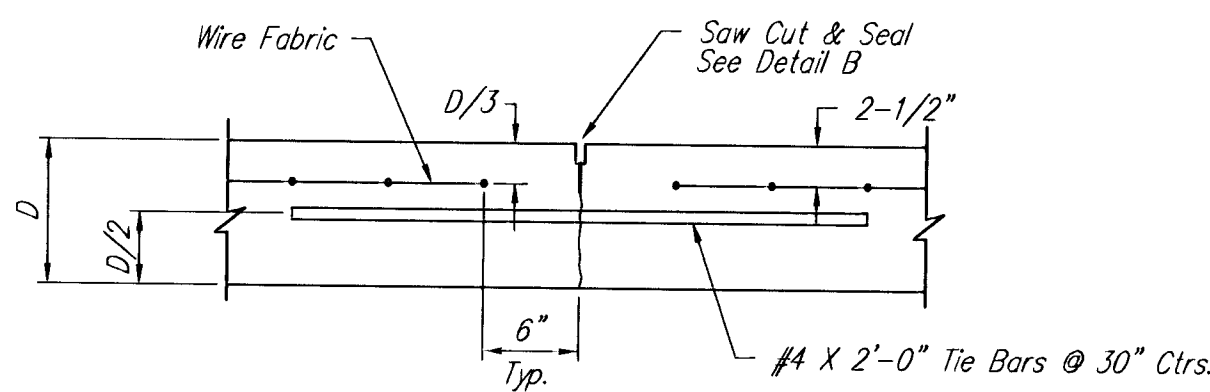


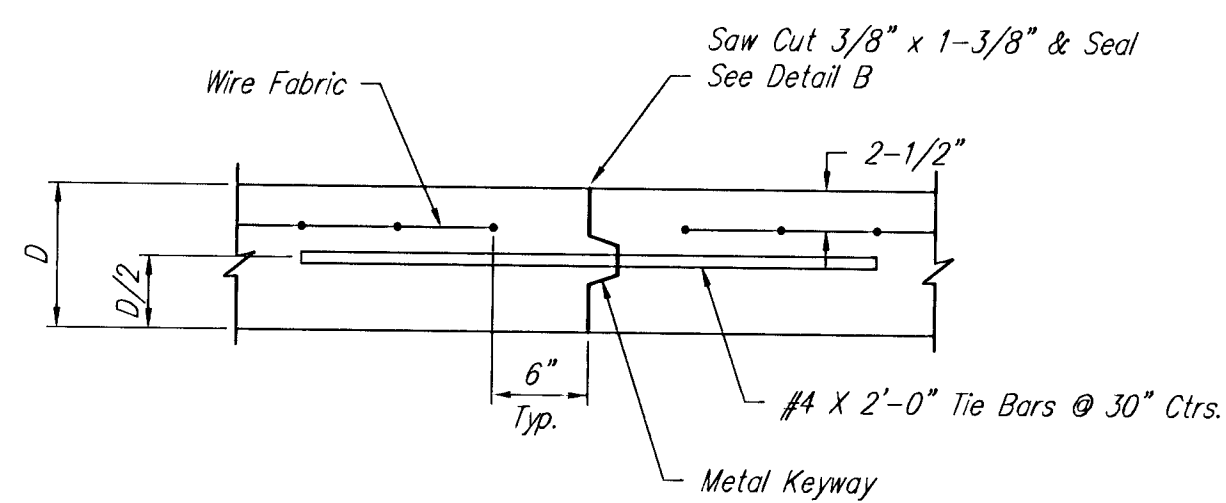
KEYWAY DETAIL



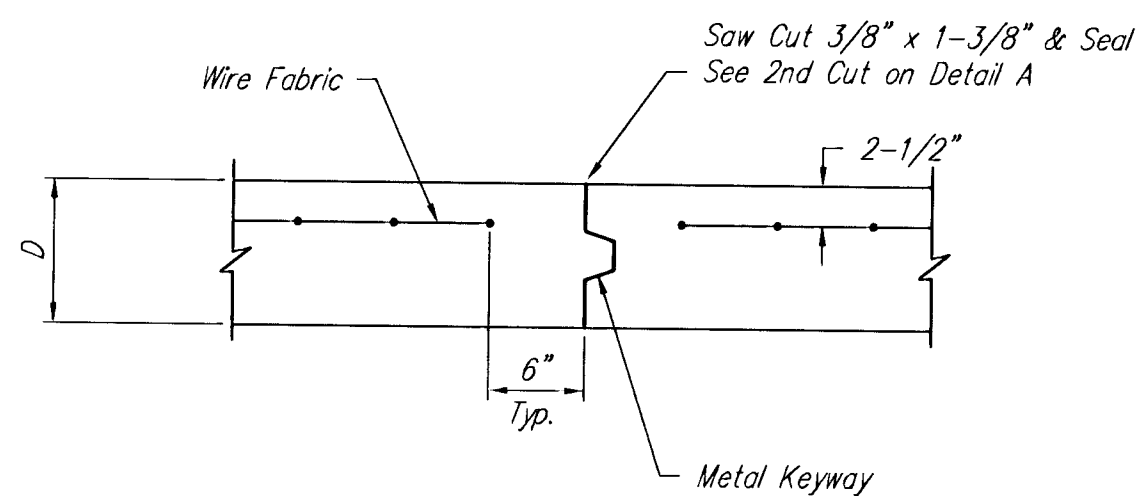
CONTRACTION JOINT DETAIL (C.J.)



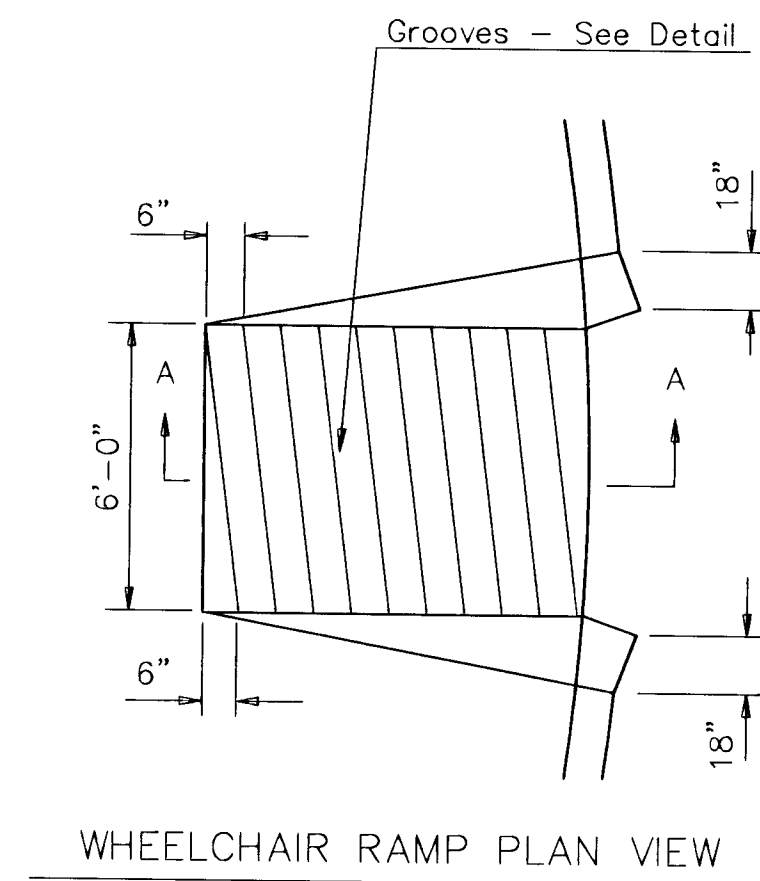
LONGITUDINAL JOINT DETAIL (L.J.)



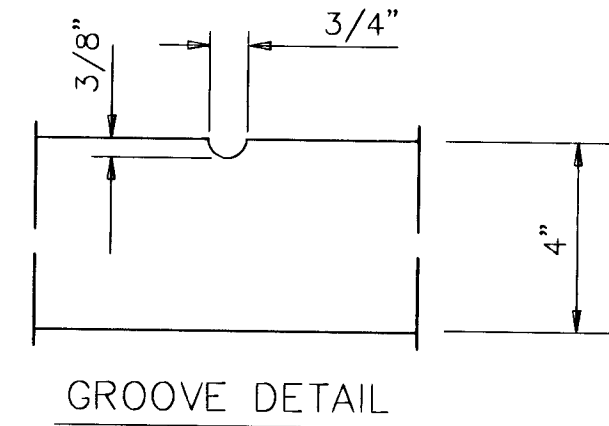
OPTIONAL LONGITUDINAL JOINT DETAIL (L.J.)
(CONSTRUCTION JOINT)



OPTIONAL CONTRACTION JOINT
(CONSTRUCTION JOINT)

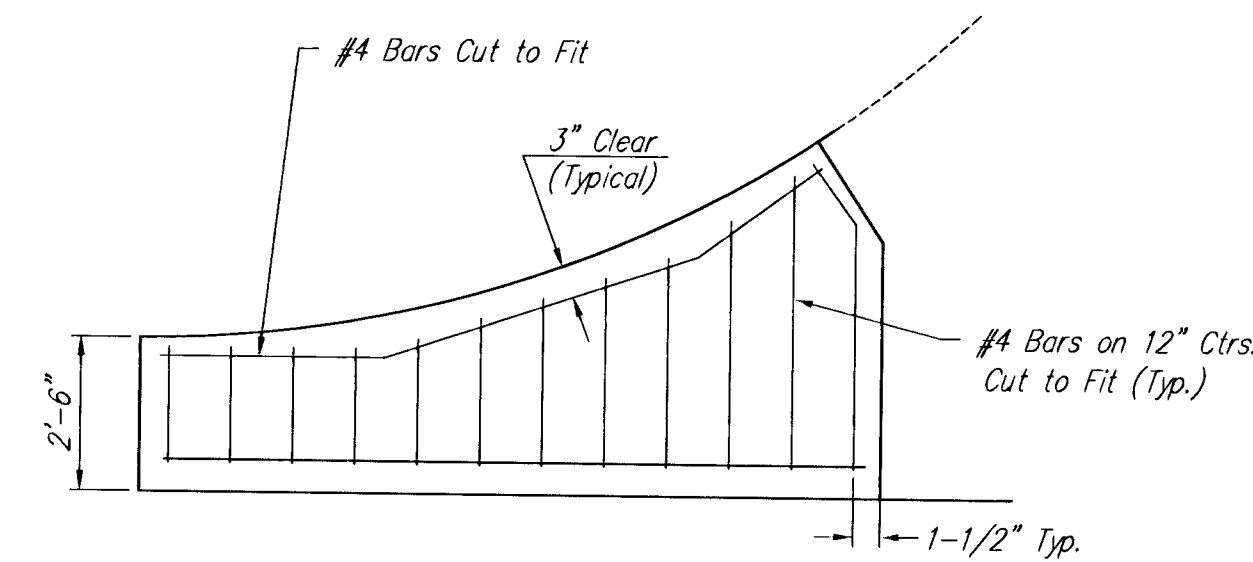


WHEELCHAIR RAMP PLAN VIEW

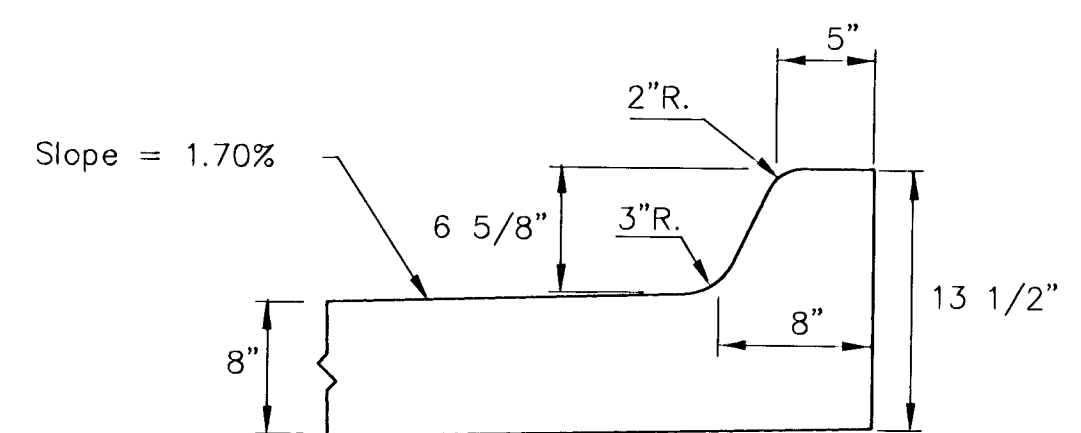


GROOVE DETAIL

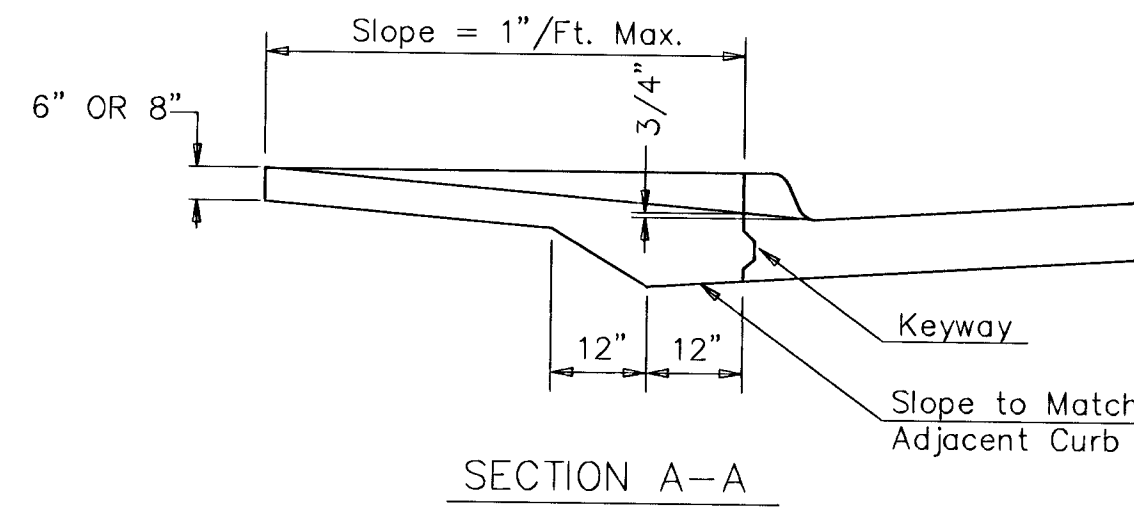
WHEELCHAIR RAMP DETAIL



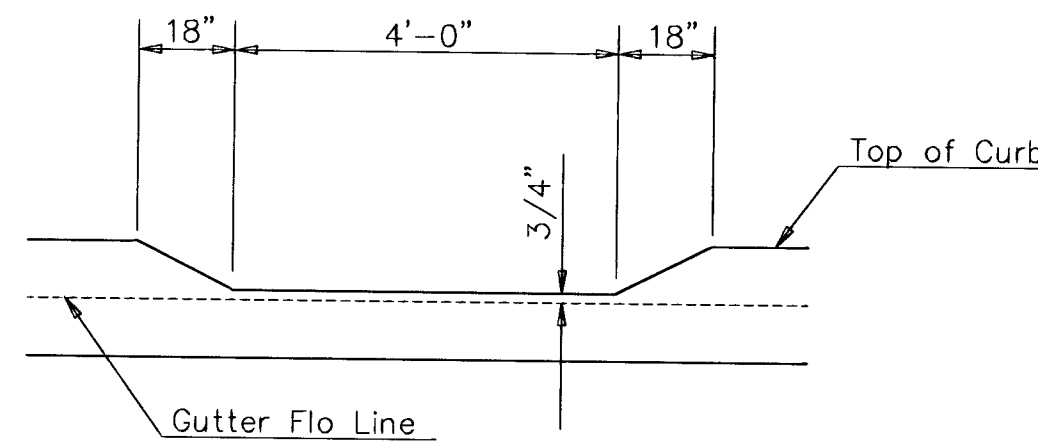
WING REINFORCING DETAIL



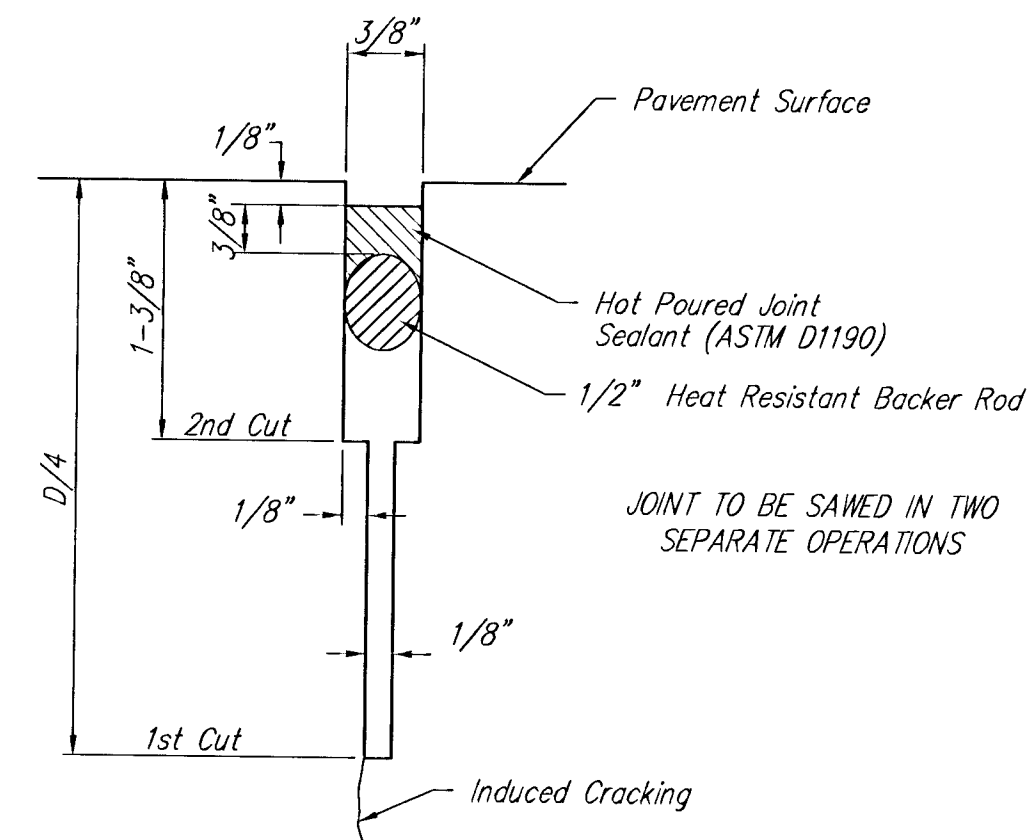
MONOLITHIC EDGE CURB DETAIL



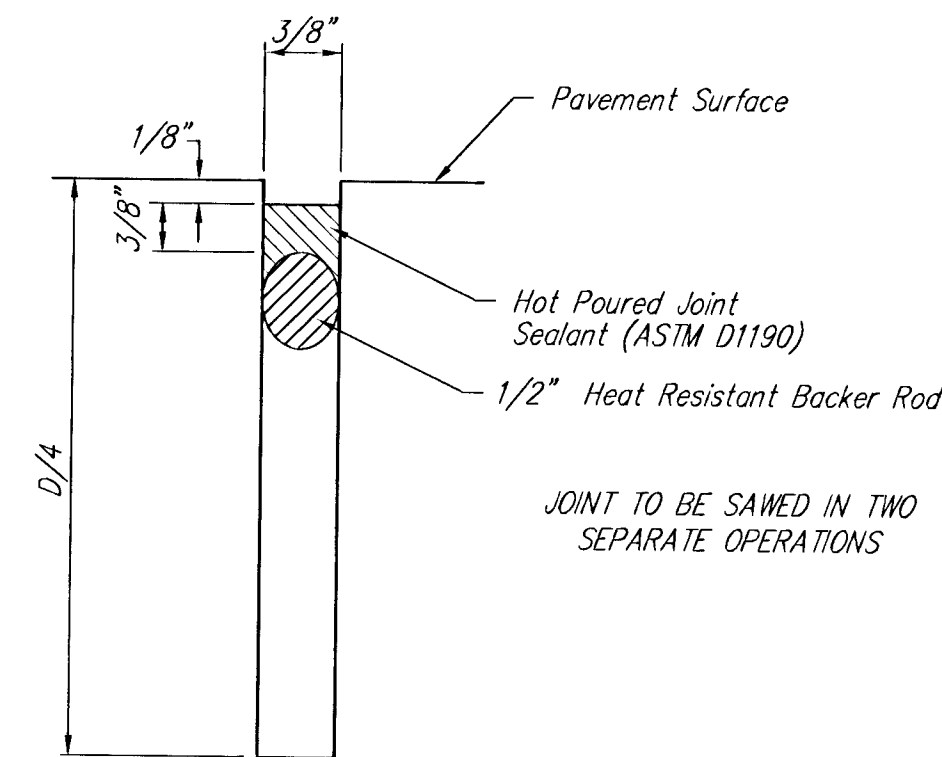
SECTION A-A



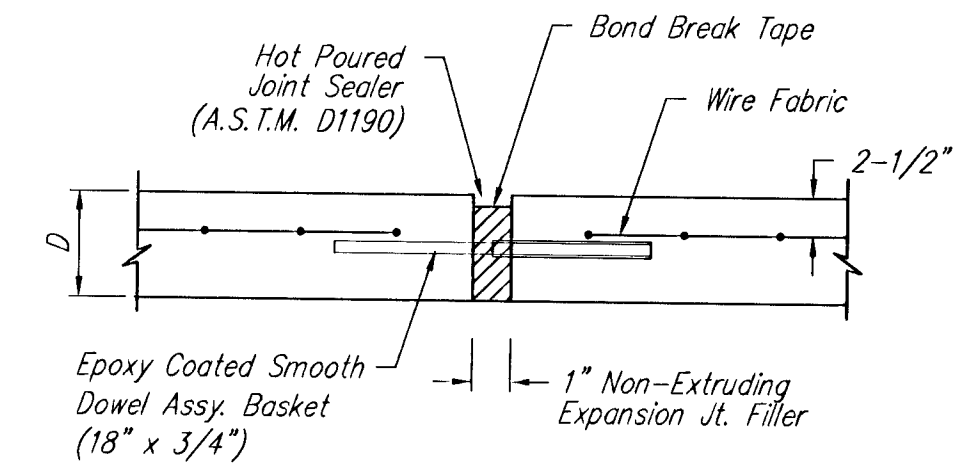
DEPRESSED CURB DETAIL



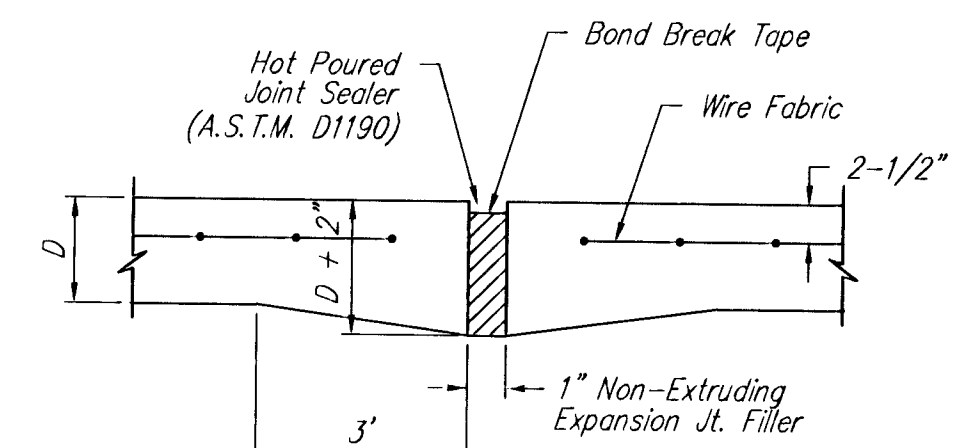
SAW JOINT DETAIL "A"



SAW JOINT DETAIL "B"



EXPANSION JOINT



EXPANSION JOINT

NOTE: Extra Thickness to be Subsidiary to Price of Square Yards Pavement

NOTE: 6" X 12" W4XW4 Wire Fabric Reinforcing Shall Be Placed So That The Wires With The 6" Spacing Will Run Parallel With The Longitudinal Joints.

PROJECT NUMBER 472 - 83317		SHEET NAME Pavdet		ENGINEERING DIRECTORY F:\Eng\Mead	
DESIGN JFB/KK	DRAWN TCA	APPROVED JFB	DATE SEPT01	SCALE None	BAUGHMAN NO 01-04-E980

MEAD IMPROVEMENT DISTRICT
PAVING DETAILS
MEAD AVE FROM BAYLEY STREET TO LINCOLN STREET

BAUGHMAN COMPANY, P.A.
ENGINEERING, SURVEYING, & PLANNING
316-282-7271 • 315 ELLIS • WICHITA, KANSAS 67211

SHEET 4 OF 14